

UNDERGRADUATE STUDENT GUIDE 2020-2021

CHASING YOUR DREAM



Xi'an Jiaotong-Liverpool University

西交利物浦大學



PRESENTS

XI'AN JIAOTONG-LIVERPOOL UNIVERSITY
STUDENT AFFAIRS OFFICE
STUDENT DEVELOPMENT ADVICE CENTRE

CHIEF EDITOR

MENG YUXIANG, QIU XINYAN

PROOFREADER

LU CHI, WANG HAO

EDITORS

ZHU LIHONG, ZHANG QIAODI, MI MENGMAN

SPECIAL THANKS GO TO

ONE-STOP STUDENT SERVICE CENTRE,
BUDDY PROGRAMME, STUDENT COUNSELLING
CENTRE, STUDENT CLUB SUPPORT CENTER,
ACCOMMODATION SUPPORT TEAM,
ART EDUCATION CENTRE, PHYSICAL
EDUCATION CENTRE, LIBRARY, CENTRE FOR
ACADEMIC AFFAIRS, STUDENT ADMISSIONS
AND CAREER DEVELOPMENT OFFICE,
ALUMNI AFFAIRS TEAM, HEALTH AND
SAFETY AFFAIRS OFFICE, MANAGEMENT
INFORMATION TECHNOLOGY AND SYSTEM
OFFICE, UNIVERSITY MARKETING AND
COMMUNICATIONS OFFICE, INSTITUTE OF
LEADERSHIP & EDUCATIONAL ADVANCED
DEVELOPMENT, XJTU ENTREPRENEUR
COLLEGE (TAICANG), ZHAO DANDAN

TABLE OF CONTENTS

01-04

WELCOME TO XJTU

26-28

LIVE IN XJTU

05-13

2020PRE-DEPARTURE
BRIEFING

29-34

ACADEMIC SUPPORT

14-16

FRESHMEN TASKS

35-52

STUDENT SERVICE

17-18

THE IMPORTANT DATES

53

APPENDIX

19-25

EDUCATION MODE

WELCOME TO XJTLU

Dear Students,

Welcome to Xi'an Jiaotong-Liverpool University. I hope that the challenges that have been brought by the COVID-19 pandemic have given you strength and resilience and not increased fear and uncertainty.

At XJTLU, we regard every student as a young adult. We encourage you to bravely stand on your own feet and actively confront challenges.

For example, you need to adopt an active approach to learning; develop a balance between your academic and extracurricular activities; get along with your roommates and classmates, and spend your time as productively as possible – avoiding bad habits such as spending too much time playing online games. Meanwhile, you are required to be responsible for yourself, for your family, and for society. Such challenges may be painful, but they help you to mature and contribute to society.

The core ideology of the University is 'a happy life and a successful career,' and the aim of the University is to cultivate global citizens with international perspectives and competencies. The fulfilment of this ideology and these goals depends on the development of various capabilities and the improvement of our philosophy and values. To achieve this, the University has developed a unique five-star education model which reflects the latest trends in global higher education and absorbs the essences of Eastern and Western wisdom, culture, and education systems. Furthermore, the University follows a student development-oriented, interest-driven, and learning-centred educational philosophy and advocate for comprehensive research-led education.

When you graduate, the two diplomas you will receive – one from China and one from the United Kingdom – are just a by-product of learning at the University. What you truly receive are skills you will use for the rest of your life. XJTLU's international learning environment and educational resources will enable you to be a lifelong learner, capable of integrating and applying knowledge and using executive skills to solve problems in an innovative manner, especially possessing the leadership qualities necessary to exert influence in today's world; a world that has become more complex and uncertain after the outbreak the epidemic.

After many years of exam-oriented education, being sheltered by your parents, and being spoon-fed by your teachers, you may be accustomed to a passive approach to learning. Such an approach requires you to listen to teachers, memorise knowledge points, and focus on exams, all of which are counter-productive to the training and development of capabilities you will need to become successful in the future.

However, to meet the increasingly complex and serious challenges the modern world presents, you must first become an active learner and then a research-led learner. You must learn to challenge your teachers, question existing knowledge, interact with other students and teachers in class, and actively participate in a wide range of innovative activities and practices. You must adapt to diversified learning and teaching modes; actively use the tutoring and mentoring systems, opportunities and resources provided by the University; and get help from our excellent One-Stop Student Service Centre when necessary.

After its founding, 'XJTLU 1.0' established an innovative education model for international specialised elites by integrating the best teaching practices from

across the globe – the American system's flexibility, the UK system's quality assurance, and the Chinese system's emphasis on a solid academic foundation. Under this model, graduates from 11 cohorts have already demonstrated great success in society. Through their achievements, they confirmed the feasibility and efficacy of the model.

But in the face of the challenges of artificial intelligence and robotics, XJTLU also looks to the future. To optimize the education model for international specialised elites, we have created a new model for higher education coined 'Syntegrative Education' (SE) and started the exploration of 'XJTLU 2.0'. This new model will cultivate the international industry elites who can stand on the shoulders of artificial intelligence and robotics to lead future industries. With SE, the University will explore a new concept for universities and a new model for campuses. To better explore this new model of higher education, with the strong support of the Taicang Municipal Government and Suzhou Municipal Government, we launched XJTLU Entrepreneur College (Taicang). The construction began in the first half of 2019 and the campus is expected to open in September 2022.

XJTLU Entrepreneur College (Taicang) has set up the first batch of six industry-themed schools. These include the School of Artificial Intelligence and Advanced Computing, School of Robotics, School of Internet of Things, School of Intelligent Manufacturing Ecosystem, School of Intelligent Finance and Business and the School of Cultural Technology. Each school offers its own programme and has, in total, welcomed the first cohort of about 300 students. To facilitate the exploration of the future education model, the global unique XJTLU Learning Mall (LM) was officially launched in May. LM will build on our world-class campus facilities, modern technology and pool the world's premier online resources and providers to XJTLU to create an interest-oriented, individualised and life-long learning ecosystem. The Learning Mall will blend onsite and online education internally and externally. We are confident that this future-oriented and ground-breaking 'XJTLU 2.0' will bring you even more rich and outstanding educational resources and learning experiences, laying a solid foundation for this crucial stage of your growth.

The objectives of Syntegrative Education are to cultivate international industry elites with curiosity, critical thinking, creative behavior, complex mindset, cross-cultural leadership and lifelong learning abilities. There are currently three forms of SE. The first is Industry Enterprise Tailored Education (SE-IETE), which aims to provide industry knowledge to XJTLU students and cultivate their practical skills. The second is the Entrepreneurship College

(SE-EC) in Taicang, which seeks to develop high-end talents and leaders guiding future industries. The third is the Innovation Entrepreneurship Community (SE-IEC), a model developed jointly with local governments and enterprises to support interest-led, lifelong learning and to promote innovation and entrepreneurship for students and graduates.

Syntegrative Education combines general, disciplinary and industry-based with management and leadership education. Classroom learning, internships, industry expertise and practical application of knowledge are integrated to create a new learning environment with a high degree of synergy between campus, companies and industry.

Here is an example of how SE-IETE can help you. The IETE project is currently divided into two stages: Level 1 and Level 2. If you choose IETE Level 1, during the first summer vacation programme, you will study industry-related courses jointly designed by the university and business enterprises, deepening your industry expertise and gaining on-the-ground experience working in an authentic entrepreneurial setting, and integrate both academic and practical perspectives. If you continue to take the Level 2 courses during the second summer vacation, you will be under the joint guidance of the university and business mentors, and through high-level course learning and business practices, you will master more complex research, management and innovation skills in different situations, and use these learned methods to analyze real problems in an industry. After successfully completing the two-stage project, you will receive the XJTLU-SE (CIETE) certificate, which is jointly issued by the University of Liverpool and XJTLU. This certificate is recognized by the UK's Department for Education and equivalent to the certificate for a minor degree.

Such an experience will not only enhance your comprehensive capabilities, but also help you better understand the development of the industry and your own professional positioning, improving the effectiveness of specialised learning. When you prepare your Final Year Project in your fourth year of university study, you may be able to engage in deeper research on a practical issue in industry, with guidance potentially from both an XJTLU academic and an industry expert. If you pursue a research project with a great deal of promise, it could propel you on your career path well after graduation.

When graduation time arrives, you may choose to launch a career path within the company. After three years of working with you, you and the company will know each



other well, and you may find yourself in a very influential starting position. Even after graduation, XJTU's SE program can help you develop your career. According to our agreement with our company partners, if you showed excellent performance after being hired, you could return to XJTU for an on-the-job masters degree that includes both study and training. Unlike a typical masters degree, you would work on behalf of the company and thus gain a well-rounded education blending theory and practice.

This study and work experience could catapult you to a senior level following the completion of your masters degree. So, while your peers from other universities are submitting their resumes for entry-level positions, you could be under consideration for a leadership role.

Our XJTU Entrepreneur College (Taicang) takes the ideas of SE-IETE even further. The SE-EC adopts a '1+3+2+X' training approach:

- 1 - Year One is general education at our Suzhou campus
- 3 - The next three years are syntegrative education and training at XJTU Entrepreneur College (Taicang) integrating specialised, industry-based, entrepreneurial, quality, management and leadership education
- 2 - We encourage students to continue a two-year, on-the-job postgraduate research and training funded by our partner enterprises for the demanded projects.
- X - In addition, we also provide multiple (X) opportunities for you to study abroad during your studies

Fully leveraging the resources of leading companies in the industry, the SE-EC combines classroom learning with internships, on-the-job training, research, entrepreneurship exploration and industry expertise, and offers Syntegrative Education which fulfils real-world expectations and demands. This education model will greatly enhance your learning, research, innovation and entrepreneurship abilities, as well as your adaptability and competitiveness. Naturally, you will be more likely to become the leaders of future industries.

It is my sincere hope that your participation in our new SE education model – which builds on our existing education model for international specialized elites to meet future demands and trends – will bring you lifelong benefits, as well as promote social transformation and the advancement of civilisation.

A final word: This University provides you with a supportive platform for becoming a responsible adult, to realise your potential, to explore your passions, and to embrace the future. Your education here will benefit your whole life as you move from kids to young adults and then to mature global citizens, from passive learning to active learning and then research-led learning, from aimless study to interest-driven study and then to a life plan. At XJTU, the more active you are, the more you will achieve.

We welcome our new students and hope you have a life-changing experience at XJTU.



PROFESSOR YOUMIN XI
EXECUTIVE PRESIDENT, XI'AN JIAOTONG-LIVERPOOL UNIVERSITY
PRO-VICE-CHANCELLOR, UNIVERSITY OF LIVERPOOL



WELCOME TO XJTU



Dear Students,

Welcome to Xi'an Jiaotong-Liverpool University (XJTU).

Now, you are drawing the curtain of a new life. You must be curious and expecting: what is a university? what can a university do for me and for society? My answer is this: university life will simulate your curiosity, passion and thirst for knowledge. It will empower you to spread your wings to chase your dreams.

Strive to learn extensively, inquire thoroughly, ponder carefully, discriminate clearly and practice devotedly. In the era of globalization, digitization, internetization and artificial intelligence, when you encounter uncertainty, ambiguity, complexity and unpredictability, learn to face your future, learn to survive, learn to study, learn to pledge, learn to create and become an innovative talent with modern personality traits. You are expected to:

- Knowledge:** be able to integrate disciplinary and general knowledge, and to combine knowledge of depth and breadth in natural sciences, social sciences, literature and art, philosophy.
- Capability:** improve oral and writing skills in both Chinese and English, and enhance critical thinking, aesthetic appreciation, quantitative and qualitative reasoning ability, historical thinking ability and scientific analysis ability.
- Responsibility:** improve self-management and social responsibility, enhance ethical and moral sense, develop cross-cultural, inter-ethnic understanding and cognitive skills, be tolerant, generous, charitable, compassionate and grateful.
- Personality:** be active, positive and optimistic, maintain curiosity and keep an open mind, adapt to diverse and changing cultural environments, find the inner strength to deal with challenges and take opportunities.
- Behavior:** integrate your knowledge and practice, commit your pledge, be confident, independent and disciplinary, be able to apply knowledge to new problems, and foster a creative awareness, innovative ability and habits.

PROFESSOR QIULING CHAO
VICE PRESIDENT, XI'AN JIAOTONG LIVERPOOL UNIVERSITY



2020

PRE-DEPARTURE BRIEFING

NEW STUDENTS REGISTRATION ARRANGEMENTS

PART I: REGISTRATION ON E-JOURNEY SYSTEM

RECEIVING ADMISSION LETTER Please log in the e-Journey System to complete the pre-induction and registration. (Please refer to "Guide for XJTU e-Journey System" on page 7)

BY SEPTEMBER 3RD Please log in to "XJTU Fee Payment Platform" to make payment. (Please refer to "Payment Guide 2020/2021" & "e-Journey" - "Payment Status" - "read payment instruction")

COMMENCING SEPTEMBER 7TH

Freshmen Information Session
Academic Programme Induction Session is an online activity for our new students and parents to get more knowledge regarding the upcoming Programme Choice in Semester 2. It will help new students and parents to deepen understanding on current settings of curriculum and Academic Programmes with new Academic Structure. Full understanding on your own preferred programmes is also benefit for making more suitable choices at the first stage of career developments. This session will take place on around 7 September 2020; to obtain further details, please scan the following QR code and follow the information releasing from "XJTU Conferences and Events" WeChat Account:



COMMENCING SEPTEMBER 11TH

Students will find the guidance, including introduction of development advisor, accommodation, university opening ceremony, personal files and household registration materials submission arrangement, health checkup, traffic, hotel, campus map and etc. on the "e-Journey System" - [Registration Guidance]. Students who have successfully completed the tuition fee payment will check the updated personal information under [My Centre], Freshman Class Meeting.

PART II: NEW ARRIVALS WELCOME WEEK

SEPTEMBER 15TH 8:30-17:00

New Students Registration
Venue: Dorm area
(Refer to "e-Journey system" - [Registration Guidance] - "Campus Map" & "Accommodation Check-in")

SEPTEMBER 16TH - SEPTEMBER 20TH

New Arrival Welcome Week Activities includes
(Opening Ceremony, Freshman Class Meeting, Theme Talks, Medical Test, Material Submission and etc.
(Refer to "e-Journey" - [My Centre] - "Welcome Timetable")

NOTICES

- In the event that you are not able to register on time, please e-mail onestop@xjtlu.edu.cn in advance. Students who fail to register without informing XJTU in advance will be considered to have given up the opportunity to study at XJTU.
- Should you have any queries, please contact the One-Stop Student Service Centre from Monday to Friday, 9:00a.m. -17:00p.m. (Tel.: 0512-88161854; E-mail: onestop@xjtlu.edu.cn)
- Please follow us on WeChat and Microblog for any latest information.



XJTU Student Service WeChat



SA - Office Weibo

GUIDE FOR XJTLU E-JOURNEY SYSTEM

The XJTLU e-Journey System is the first stop for freshmen, where you have the chance to learn about the unique culture, ideas and service philosophy of XJTLU. You can also complete the registration procedure and conveniently view your check-list.

Please start your journey at XJTLU by carefully reading and following the instructions below.

SPECIAL TIPS

- The e-Journey is divided into three parts: Pre-Arrival Registration, My Centre and Support & Service. You will complete your online registration procedures under **【Pre-Arrival Registration】**, and find your information under **【My Centre】**. The module **【Support & Service】** will list the unique culture and supports/services in XJTLU.
- After completing all the procedures under the **【Pre-Arrival Registration】** module of e-Journey, you are suggested to read contents under the module **【Support & Service】** so as to get familiar with your campus. The system will release registration guidance no later than 11th September. Once it is released, you will find useful info in submodule [Registration Guidance] under **【Pre-Arrival Registration】** and receive detailed registration information in [Basic Info] and [Welcome Timetable] modules under **【My Centre】** part of the system. Please make sure that you finish all the procedures before you arrive at the university;
- Please use the browsers below to complete your online registration and make sure the browser is updated to the latest version: Mozilla Firefox, Google Chrome, Apple Safari, Microsoft Edge;
- Some of the information involves your family members. Make sure that your family members are aware of that before you fill in the information.
- Considering the large amount of information required, the system will save the progress for you so that you may follow your own schedule to complete the whole procedure to the maximum extent.

SYSTEM -LOG IN

- e-Journey System: <https://ejourney.xjtlu.edu.cn/>
- Please refer to the “Email Account and Password for Freshmen” in your admission offer package to find your log-in username and password.

SYSTEM CONFIRMATION

- After reading the instructions, please click “I have read and agree”, then click “Ok” to proceed to the next step.

REGISTRATION PROCEDURE

The registration procedure of this system includes: questionnaire, pre-induction, registration, payment instruction, and parents/guardians contact info upload. Please complete all the procedures step by step. After that, the system will release the registration info and you may check your personal info at a specified time.

A PRE-ARRIVAL REGISTRATION

Click on the **【Pre-Arrival Registration】** module into the registration procedures. The system will list all procedures by steps and there will be a [Freshmen Tasks] on the right-top for your self-check.

QUESTIONNAIRE	<ul style="list-style-type: none"> • Click [Questionnaire] to enter the questionnaire page • Click each questionnaire to finish all questions
PRE-INDUCTION	<ul style="list-style-type: none"> • Click [Pre Induction] to enter the pre-induction page. • Click the name or the logo of the sections to enter the learning page (when you finish a section, click “Show my to-be-completed sections” at the top right corner of the screen to find the unlearned sections). • After you enter the learning page, click “I hereby confirm I have learned this chapter”, and click “next section” to the next chapter (you can also choose sections from the section navigation at the top right corner of the screen).
REGISTRATION	<ul style="list-style-type: none"> • Proceed to Registration after you finish pre-induction. • Click “Online Registration” the system will automatically lead you to the e-Bridge system. • The system will synchronize students’ registration information after three hours and update the status.
PAYMENT INSTRUCTION	<ul style="list-style-type: none"> • After registration, you will enter the payment platform to complete payment. • Click “read payment instruction” to see the payment procedure, time and notice. • After online payment, you may find the latest status of payment in e-Journey. If the payment status is not updated in time, please try again later or contact One-Stop Student Service Center by email if the payment status has not been updated for more than 24 hours; If you pay the tuition fee via bank transfer, the status will be updated within 3 workdays.
CONTACT INFORMATION UPLOAD OF PARENTS/ GUARDIANS	<ul style="list-style-type: none"> • To make sure that the emergency contact information is accurate, please ask your parents/guidance fill in the Emergency Contact form carefully in admission offer package • Click the [Contact Information Upload of Parents/Guardians] and upload the scanned copy, or, alternatively a photo of the document onto the online system

REGISTRATION GUIDANCE

The [Registration Guidance] will be open to you no earlier than 11th September. You will find the instructions of following information no matter you finish the previous procedures: development advisor introduction, accommodation, university opening ceremony, personal files and household registration materials submission arrangement, health checkup, traffic, hotel and health and epidemic prevention requirements, etc. If you have not finished the online tuition fee payment, there will be on-site payment instructions. Please print it out if necessary.

B MY CENTRE

Click **【My Centre】**, you will enter your personal information page. This module will be open no earlier than 11th September. The contents of your centre will be varied according to your payment status.

- If you have successfully paid your tuition fee, you will have access to all information listed below in [Basic Information] and [Welcome Timetable]
- If you have not successfully paid your tuition fee, you would not have access to the module. The information will be open to you after your on-site payment at Student One-Stop in XJTLU.

BASIC INFORMATION

- Click the [Basic Information] under **【My Centre】**
- You will find your personal info, your class, development advisor, accommodation, and so forth. Please print it out if necessary.

WELCOME TIMETABLE

- Click the [Welcome Timetable] under **【My Centre】**
- You will find the welcome timetable and activities arranged during the induction week. Please print it out if necessary.

PAYMENT GUIDE 2020/2021

ITEM	AMOUNT	REMARKS
TUITION FEES	RMB 88,000	Teaching and Learning Expenses
ACCOMMODATION FEES	RMB 2,200	Fees will be collected on behalf of the HET Management Office of Student Accommodation
SERVICE CHARGE	RMB 2,000	<ul style="list-style-type: none"> • Textbook Fees • Military Training Uniform Fees: (Collection on behalf of uniform suppliers): RMB 125 • Insurance Expenses: RMB 143 (This may fluctuate with the government's policy. If the actual cost is less than RMB 143, XJTLU will refund any overpayment.) • Other fees: including self-printing fees, ID card replacement fee, Library book overdue fines etc.

Note: All service expenses will be deducted from the students' service charge accounts, and these accounts will be settled by the end of each academic year. If expenses are less than RMB 2,000, all remaining money will be refunded.

NOTICES

- The total payment amount is RMB **92,200**.
- Please log in to "XJTLU Fee Payment Platform" to finish the payment no later than September 3rd.
- Please log in the Pre-arrival system to find the Operational manual of "XJTLU Online Payment Platform" and please contact with Finance office at 0512-88161025 or 0512-81889024.

ACCOMMODATION CHECK-IN

THE FLOWCHART BELOW ILLUSTRATES THE CHECK-IN PROCEDURES.



Zhi Hui Hu Wechat

ONLINE REGISTRATION

Please log in to the website <http://2020.215123.cn> or add the Wechat Public Account Zhi Hui Hu from 9:00 of September 11 to 12:00 of September 14, 2020, to complete the online dorm procedures (pay the room deposit and sign the room rental agreement online). Consultation: 0512-62921890 (Mon. to Fri. 9:00-12:00 & 13:30-17:00)

Tips: University will release the Student ID Card after the new semester starts. It's your own decision whether apply for the Dushu Lake ID Card on the system.

ONSITE REGISTRATION

Make dorm check-in procedure onsite on Sep. 15 from 8:30 to 17:00 based on the instructions on the WeChat public account Zhi Hui Hu.

TIPS AFTER CHECK-IN

Please contact the Dormitory Property Management Offices (Wen Xing 0512-88852775, Wen Hui 0512-62952613, Wen Cui 0512-67616932) if you find any missing or damaged facilities after you check in to your room.

NOTICES

- Students need to bring their own bedding or can purchase reasonably priced bedding from nearby supermarkets or shopping malls. The sizes of dorm furniture are a little different due to they were purchased and installed in different time. For detail information of dorm furniture, please contact Dormitory Property Management Office of each district for consultation.
- Please contact the Property Management Offices within one week after check-in if you find any missing or broken facilities. After one week, it will be acknowledged that the facilities are in good condition.
- You are suggested to read through the content of the Accommodation Agreement on the system carefully before you sign the online room agreement.
- After check-in, please protect the dormitory facilities. For any missing or damaged facilities as a result of human negligence, residents will need to pay compensation according to the Accommodation Agreement which is signed when check in.
- After check-in, you are suggested to comply with the rules and regulations of the Student Accommodation Management Regulations of Suzhou Dushu Lake Science & Education Development District, enhance self-management, improve self-protection awareness and actively participate in the establishment of a harmonious life environment.
- As COVID-19 has not been over yet, please refer to the instructions for epidemic prevention on the basis of government requirements on e-Journey for new students' registration, dorm check-in and the following arrangement.



HOUSEHOLD TRANSFER

WHO NEEDS TO TRANSFER THEIR HOUSEHOLD REGISTRATION?

If you are a Suzhou urban resident (including the county-level city), you do not need transfer your household registration. If you are from any other area, residence registration transfer is done on a voluntary basis.

WHAT DOCUMENTS DO I NEED?

You need to prepare 3 documents: Offer Letter, Booklet of Household Registration, and your Identification Card. Please take these three documents to your local police station where your residence is registered to process the transfer application.

WHAT ADDRESS WILL MY HOUSEHOLD BE TRANSFERRED TO?

Xi'an Jiaotong-Liverpool University, No. 111, Ren'ai Road, Suzhou Industrial Park.

WHAT SHOULD I DO IF "SUZHOU INDUSTRIAL PARK" CANNOT BE FOUND IN THE LOCAL HOUSEHOLD REGISTRATION SYSTEM?

Please choose "Suzhou Municipal District" instead.

WHEN AND WHERE SHALL I SUBMIT THE HOUSEHOLD TRANSFER LETTER?

After getting the household transfer letter from the local police station, please submit it to the university according to the timetable listed on the e-Journey System and please write down the below information at the upper right corner when submitting : student ID number, name, height, your phone number and your parents' names and phone numbers.

TRANSPORT AND ARRIVAL

BY AIR

SHANGHAI PUDONG AIRPORT If you arrive at Shanghai Pudong Airport, please take the airport shuttle bus and get off at “Suzhou Industrial Park Stop”, and then take a taxi to XJTLU.

SHANGHAI HONGQIAO AIRPORT If you arrive at Shanghai Hongqiao Airport, you can take the high-speed train from Hongqiao Railway Station to “Suzhou Railway Station” or “Suzhou SIP Railway Station (Suzhou Yuan Qu Station)”. Alternatively, you can take the airport shuttle bus and get off at “Suzhou Industrial Park Stop”, then take a taxi to XJTLU.

WUXI SUNAN INTERNATIONAL AIRPORT If you arrive at Wuxi Sunan International Airport, please take the airport shuttle bus to “Suzhou terminal division”, then take a taxi to XJTLU.

BY TRAIN

METRO You can take Metro line 2 and get off at Songtaojie Station if you arrive at **Suzhou Railway Station** and **Suzhoubai Railway Station**.

TAXI you can take a taxi from all the railway stations to XJTLU directly.

BUSES

- you can take Express No.2 from Suzhou Railway Station to “Xi Jiao Da Stop”
- Bus No.115 from Suzhou Industrial Park Railway Station to “Ren da guo ji xue yuan dong”.
- There is no direct bus from the Suzhou North Railway Station to XJTLU.

BY COACH

SUZHOU SOUTH BUS STATION You can take Bus No.16 to “Xi Jiao Da Stop” or take a taxi to XJTLU.

SUZHOU NORTH BUS STATION You can take Express No. 2 to “Xi Jiao Da Stop” or take a taxi to XJTLU.

UNDERGRADUATE STUDENT GUIDE

2020

2021

CHASING YOUR DREAM
@ XJTLU

FRESHMEN TASKS

DESCRIPTION OF FRESHMEN TASKS

XJTLU has exquisitely designed a series of freshmen tasks of a whole semester. Each task aims to help your understanding and affinity of XJTLU culture and ideology, to promote freshmen self-management capability and further overall development. These tasks are listed as the following 3 types:

A PRE-ARRIVAL TASKS (BEFORE WEEK 0)

TASK REQUIREMENT	Accomplish before admission
------------------	-----------------------------

ASSESSMENT METHOD	Confirm completion on the E-Journey system
-------------------	--

TASKS FOR FRESHMEN

- 01 **Complete the e-Journey system task:** according to the e-Journey system guideline, fill in the questionnaire, finish the pre-course, and complete your personal information and the registration.
- 02 **Join local buddy QQ group:** read the Buddy Programme module. Join buddy QQ group and confirm completion on the e-Journey system. Chat with senior buddies in advance and greet with your fellow-villagers. Warmth can always make people more powerful.
- 03 **Follow XJTLU official social networking accounts:** in the appendix of the handbook, there are some important official university accounts which can be followed according to your demands and they can help you know the university quickly. At last, confirm the completion on the e-Journey system.
- 04 **Pick presents for your roommates:** bring a small gift with sincere greetings and blessings for your roommates. Show your kindness. confirm the completion on the e-Journey system.
- 05 **Email account bound:** please bound your XJTLU email to your electronic device. Normally, official university notices will be sent via emails, so set up the email account bound in time and check it regularly. Or you may miss important notices from the university.
- 06 **Transfer the relation of the Communist Youth League:** Students shall keep certificates of the Communist Youth League by themselves. Please submit the hard copy of the Recommendation Letter and log in to the Platform of the Smart League Construction of the Central Committee of the Communist Youth League and apply for transferring to the Youth League of XJTLU in Suzhou Industrial Park in Jiangsu Province. Should you have any questions, please get in touch with the teacher responsible for the Youth League Committee issues in your original high school.
- 07 **Watch Live Broadcast video of 2020 Academic Programme Induction Session:** Follow our WeChat Public Platform by searching“ 西浦会议与活动 ”to gain more related information on Academic Programmes and Programme Choice.

B INDUCTION WEEK TASKS (WEEK 0)

TASK REQUIREMENT	Attend Induction week activities to be familiar with the campus
------------------	---

ASSESSMENT METHOD	Attendance statistics collected by volunteers
-------------------	---

TASKS FOR FRESHMEN

- 01 **Attend the opening ceremony:** according to the email notification, attend the opening ceremony of your new life. Please ensure safety and order during the process.
- 02 **Attend Freshman Class Meeting:** according to the notice, attend the Freshmen Information Session on time. It is a good opportunity to know your classmates and development advisor. Please notice that this is your only class session during undergraduate years as we have no traditional “class” at XJTLU.
- 03 **Attend campus tour:** follow your buddy and walk around to visit the representative buildings at XJTLU, remember the location of important functional departments, and collect stamps from Buddy Programme at the assigned places.
- 04 **Search campus online resources:** find online resources such as e-Bridge, XJTLU Learning Mall, Library, One-stop, Career Canter and Counselling Service Center to experience XJTLU efficient and convenient study and life on guide.xjtlu.edu.cn.

C ACADEMIC WEEK TASKS: (WEEK1-WEEK4)

TASK REQUIREMENT	Interact positively and show yourself
------------------	---------------------------------------

ASSESSMENT METHOD	Click the open-ended questionnaire link via XJTLU Learning Mall system, and write stories of your changes from three aspects (XJTLU culture, interaction with others, and campus life).
-------------------	---

TASKS FOR FRESHMEN

- 01 **Participate in club activities:** more choices and opportunities to display elegant demeanor, cultivate hobbies and make friends.
- 02 **Interact with students:** make friends (you are encouraged to get acquaintance with foreign friends), give yourself an opportunity to know more people and be familiar with XJTLU.
- 03 **Interact with teachers:** discuss academic issues with your tutor, discuss disciplinary prospects with your academic advisor, and talk about your life with your development advisor.
- 04 **Interact with your family:** talk to your family and share your campus life before they reach out to you.
- 05 **Express your opinion:** express your “trenchant” comments on Utalk, and discuss with other XJTLUers

AWARD AND PRIZE

PRE-ARRIVAL AND INDUCTION WEEK TASKS

PRIZES	300 T-shirts of XJTLU limited edition. First come first served
--------	--

PICK-UP TIME AND VENUE	please refer to the award notification email
------------------------	--

UPON COMPLETION OF ALL TASKS

SECRET AWARD	
--------------	--

ACTIVITY TIME	an email notification will be sent to you around the end of the 1st semester.
---------------	---

THE IMPORTANT DATES

BEFORE 3. SEP

COMPLETE THE FEE PAYMENT



11.SEP

POST THE REGISTRATION NOTES (E-JOURNEY SYSTEM)



14.SEP & 15.SEP

FORMAL REGISTRATION



16.SEP & 17.SEP

FRESHMAN CLASS MEETING
ENGLISH PLACEMENT TEST



17.SEP-19.SEP

FRESHMEN MEDICAL TEST



18.SEP

FRESHERS' FAIR



19.SEP

OPENING CEREMONY

The event might be put off because of the weather



19.SEP & 20.SEP

TEXTBOOK COLLECTION



20.SEP

WELCOME PARTY



21.SEP-25.SEP

ACADEMIC WEEK



28.SEP-3.OCT

CHINA'S NATIONAL HOLIDAY,
MID-AUTUMN DAY



2.NOV-6.NOV

MIDTERM EXAMINATIONS



21.DEC-25.DEC

READING WEEK /CHRISTMAS



11.JAN-20.JAN

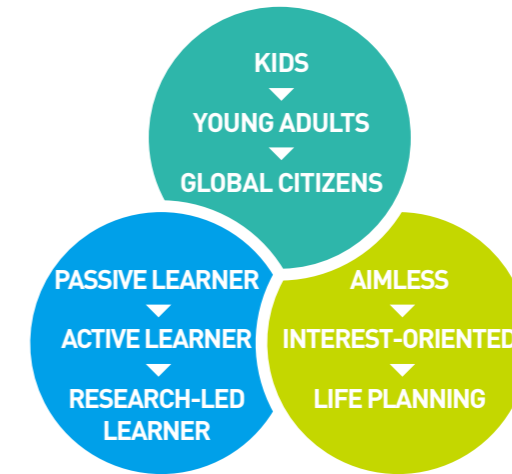
FINAL EXAMINATIONS



EDUCATION MODE

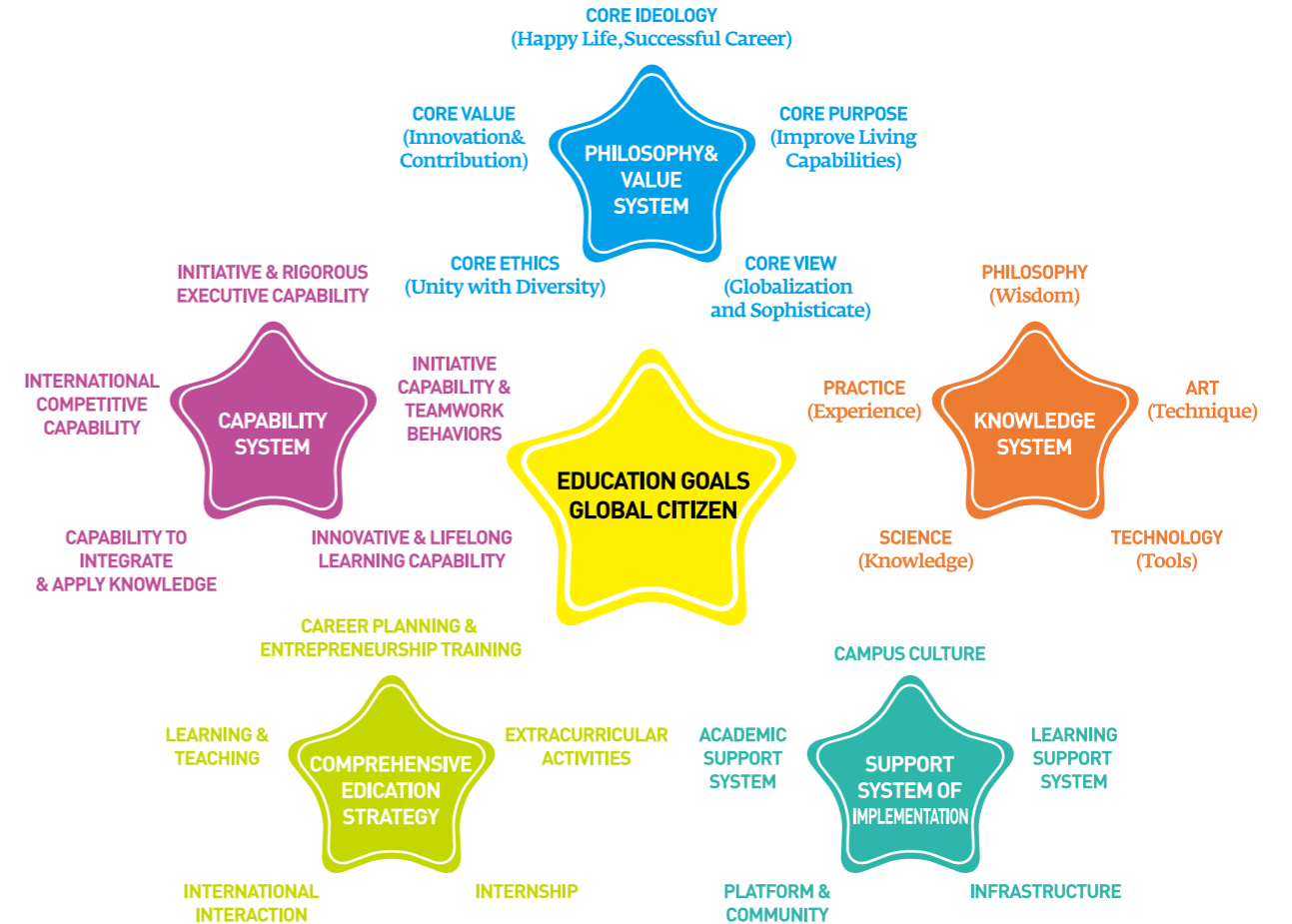


PRESIDENT XI SAYS XJTU HELPS STUDENTS ACHIEVE THREE TRANSFORMATIONS!



XJTU FIVE-STAR EDUCATION MODEL

For XJTU students, the transformation to “young adults” is just the first step. The mission of Xi’an Jiaotong-Liverpool University is to cultivate students to be “global citizens”. One of the core parts of becoming global citizens is to equip themselves with international competitiveness. After constant explorations, XJTU has put forward three systems, i.e. Philosophy & Value System, Capability System and Knowledge System, which represents students’ development and growth in three dimensions. To achieve this goal, we combine the best of eastern and western educational models, resulting in Comprehensive Education Strategy and Support System of Implementation. Because of the pentagram presentation, the educational model is outlined as “five-Star Educational Model”. (See details below)



FOUR-TUTOR SYSTEM

ACADEMIC ADVISER

How to plan your four-year study and scientific research with your university? To continue to pursue a master degree or directly enroll into a joint master and PhD program? What if you become more interested in other programs? What if you fail your modules? These are the questions most often asked by students who knock on the doors of their academic advisers' offices.

“ I don't tell students what to do. The first thing to ask is: what do you want to do? The most important issue in higher education is that students must discover themselves so that they can empower themselves and go further.”

— Academic Adviser, Department of Biological sciences
Dr. Jian Liu

ACADEMIC ADVISERS -
**LET STUDENTS EMPOWER THEMSELVES
AND GO FURTHER**



STUDENT DEVELOPMENT ADVISER

The international style of the university means that students are welcomed to communicate with their Development Advisers (DA) if they are having any thoughts, concerns or doubts with regard to their life or development. DAs will bring together resources from across the whole university to give appropriate advice and assistance to the students on the basis of respect for and trust in them. Meanwhile, DAs will leave space to students for their free development, rather than excessively interfering into their lives.

“ What Ms Dong [the student] might not have learned is that behind her gradual adaptation to life in XJTLU and her active completion of the 'three changes', there is a professional team providing scientific and systematic support for every step of her growth.

It is our mission to enable students to live independently and healthily and complete the 'three transformations'.

— Student Development Adviser
Mr. Zilong Wei

STUDENT DEVELOPMENT ADVISERS -
WE DON'T TEACH; WE EDUCATE



BUDDY PROGRAMME

The buddy programme intends to provide timely guidance to freshmen and assist each student in adapting themselves to their university life as soon as possible, by means of peer mutual help and communication with excellent older students.

“ Alice Averley, an exchange student from Liverpool University felt as though she was a 'new-born baby' on her first day in Suzhou due to the language barrier. Luckily, she was provided with buddy support by the university - Yurui Li, a sophomore from Architecture Department became her Big Buddy who says he chose XJTLU because he wanted to get himself integrated into a multi-cultural environment. Taking part in the overseas student buddy programme has given him a terrific opportunity for cross-cultural communication.

BUDDY PROGRAMME:
BRINGING DEVELOPMENTAL OPPORTUNITIES TO EACH OTHER



EXTERNAL MENTOR

The external mentor project is one of the important parts of XJTLU "Five-star" Education Model. It aims to establish an interactive platform for enterprises, students and university. XJTLU invites senior experts from various fields to serve as external mentors for students' future career and life development. They offer a variety of skills and other effective guidance to students to facilitate knowledge transition from school knowledge to social common sense, as well as to shorten the adaptation period for students from university into society through the development of a positive attitude and increased capability.

“ Students can learn a lot from textbook, but actually they need "a scene". Every one of us just like the living theatre, making them learn more deeply through communication attractively. Thus they could grasp the key point in the future.

— Mr. Dagang Wang
ASSET MANAGEMENT COMPANY
External Mentor for 11 years

EXTERNAL MENTOR:
EXTERNAL MENTORS 'OPEN WINDOWS' FOR XJTLU STUDENTS



IETE PROGRAMME INTRODUCTION

The Certificate in Industry and Enterprise Tailored Education (IETE) is the pilot programme of XJTLU's SE to develop industry elites - syntegrative elites. The programme provides students with an additional educational path during their summers to earn career-competitive qualifications, while developing their skills for continuous learning, integrating and applying knowledge and to develop adaptability.

Students gain cross-disciplinary training and experience, a complexity mindset, strong managerial skills, entrepreneurial skills, and cross-cultural leadership skills.

In the IETE programme, XJTLU partners with enterprises to integrate and synergise their talents, resources, and practical opportunities, and for both sides to collaborate in designing industrial, management, and leadership training courses. After graduation, students - as syntegrative elites - will be more competitive in entering their selected industry and accelerating their career development.

As an educational programme of advanced and reforming educational thoughts for the innovation and entrepreneur community, the IETE programme is jointly managed by XJTLU's ILEAD (Institute of Leadership & Education Advanced Development) and IIH (International Innovation Hub).

XJTLU ENTREPRENEUR COLLEGE (TAICANG)

XJTLU Entrepreneur College (Taicang) is an exciting unique forward-thinking 21st century solution to meeting the educational challenges created by the 4th Industrial Revolution. The philosophy of XJTLU Entrepreneur College (Taicang) is to create unique industry themed schools through an equal partnership with well-known and innovative businesses, delivered through the university Syntegrative Education model.

VISION

Become the cradle of elites and leaders for emerging industries, and the model of the future university.

MISSION

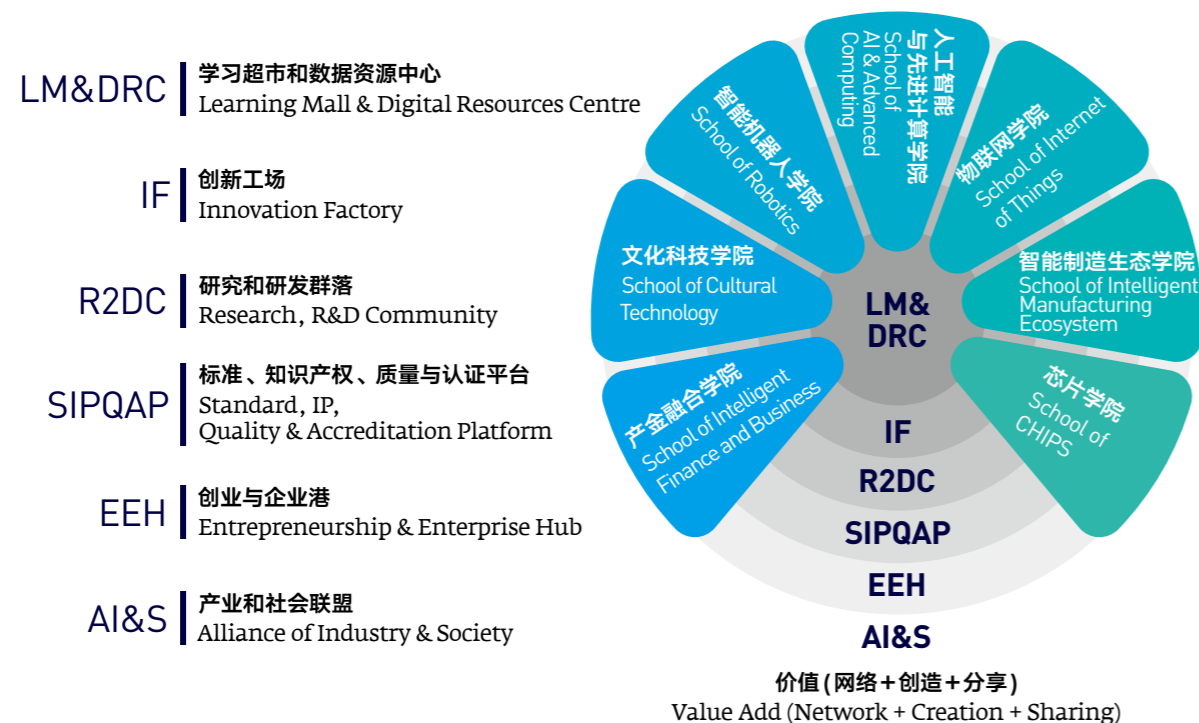
- To cultivate elites and leaders for new industries
- To explore new models for international high-end development of human resource excellence and operations
- To explore new models for new industry development and foster their development
- To offer solutions to the conceptualisation of the future university and the organisation of its campus

UNIQUENESS

Based on an existing specialised talent cultivating model, Syntegrative Education integrates specialised, industrial and management programmes to deliver international industry experts, with the ability to lead future industry development. Those leaders will be highly versatile with the ability to drive the industries of the future. They will be well-rounded yet specialised, know their industries thoroughly, and be able to mobilise resources and lead people.

SOME UNIQUE FEATURES OF SYNTEGRATIVE EDUCATIONAL MODEL INCLUDE:

- Industry-themed schools to enhance cross-disciplinary and industry training
- Lifelong education at the XJTLU-Learning Mall without age limits, which allows everyone to achieve their learning targets and acquire credits via courses or training programmes
- Support for innovative ideas from students and the public via the open-end innovative Innovation Factory, various Research & Development Institutes, and a range of start-up initiatives with business partners
- Enhancement of students' adaptability to work in fast paced, rapidly changing future careers through the synte-gration of general, specialised, industry, management and entrepreneurship education
- Innovative programme structure (major + minor) with 600 hours professional development components, leading to extra XJTLU and UoL qualifications
- Valuable entrepreneur and leadership skills through studying on the unique contemporary entrepreneur modules that are part of the degree, giving students a competitive edge in career path they choose.



CONTACT US

XJTLU Entrepreneur College (Taicang)
 WEBSITE: <https://www.xjtlu.edu.cn/en/study/departments/entrepreneur-college-taicang/>
 TELEPHONE: +86 0512 88161361
 EMAIL: Taicang.Inquiry@xjtlu.edu.cn
 ADD: 12th floor, Central Building, Xi'an Jiaotong-Liverpool University, 111 Ren'ai Road, Suzhou Dushu Lake Science and Education Innovation District, Suzhou Industrial Park, Suzhou, P. R. China, 215123



CAMPUS INTRODUCTION

Please remember the name and English abbreviation of each building before you enter the campus. This will help be familiar with the campus when you walk around the campus with your Buddy. Please scan QR code to download the campus E-map . You can get the hand-drawn map at XJTLU Museum. It will help you intuitively experience the architectural composition and planning on north and south campus, and understand the landmark area with our unique campus features and the stories behind it as well.



The following three buildings are of great importance to your campus life:

FOUNDATION BUILDING	Language Centre is located in this building. You will take almost all the 1st year foundation courses here. In addition, many clubs' activities will be held at the lobby of the first floor.
CENTRAL BUILDING	This is the administration building. Most functional departments are located here, such as Library, Museum, Registry, IT Service Centre, One-Stop Student Centre, Student Counselling Centre, Accommodation Service Centre, Student Club Service Center, Career Center, Alumni Association, etc.
PUBLIC BUILDING	This is the place where Student Development Advice Centre is located. If you have any confusion at the beginning of the semester, make an appointment and come to your development advisor's office for consultation.

CAMPUS CAFETERIA

As one of the top universities in Suzhou, XJTLU provides a variety of campus cafeterias in order to ensure students' living standard.

LIFE & HOPE REFECTORY — SOUTH CAMPUS	The most popular canteen in campus with the most abundant categories of dishes
PARFAIT SCHOLAR CAFETERIA — SCIENCE BUILDING	Located in Science Building, convenient and fast, the food is fresh and not greasy
YUSHANFANG FAST FOOD — PUBLIC BUILDING	Inexpensive food with high quality, the best choice to save money

HEALTH AND SAFETY

First aid response at XJTLU: There is a Pre-hospital Care Room in university.

SERVICE SCOPE	<ul style="list-style-type: none"> Debridement, sterilizing and dressing for general trauma First aid on the spot and preliminary treatment of accidental injury
LOCATION	Foundation Building 159
OPENING HOURS	9: 00 am-12: 00 am every Monday & Thursday No permanent duty personnel. Please call the contact person on off-hour
CONTACTS	Ms. Jin
TELEPHONE	0512-81884630

- According to the relevant national professional policies, the Pre-hospital Care Room CANNOT provide disease diagnosis and drug treatment.
- First-aid kits are distributed to every Property Management Office, academic departmental secretaries, labs and Health and Safety Officer. All medical supplies are free to use. But NO medicine is provided in the first aid kit. Keep your own medicines with you if necessary.
- Some first-aid equipment such as cervical collar, head holder, stretcher and wheel chair are acquired for public use in the campus.
- If you have any problems or questions about health and safety, raise them to the Health and Safety Affairs Office.
Office location: Center Building, 1103
Contact number: 0512-88161005
E-mail: hsc@xjtlu.edu.cn

FOR YOUR SAFETY

BE CAREFUL OF FRAUDS

- Be careful of people approaching you pretending to be teachers, student unions, student associations, or seniors conducting surveys or offering subscriptions.
- Do not give your mobile phone, cash or bank cards to strangers.

BE CAREFUL OF THIEVES

- Don't carry large amounts of cash with you upon your arrival. Please be careful when you set up your bank card pin number.
- Take good care of your personal belongings.

BE AWARE OF FIRE SAFETY

- Follow accommodation rules and regulations strictly; use fire extinguishers correctly.
- Pay attention to traffic safety when you go out.

REMEMBER THESE EIGHT COMMON SCAMS TO AVOID BEING CHEATED

- Someone claims to be from public security organs and asks for a money transfer.
- Someone requires you to transfer your money to a 'Safety Account'.
- Someone requests a pre-deposit for awards.
- Be cautious of scams requiring you to provide your banking information on unknown websites or links.
- Never give your personal information, bank card information or message security codes to unknown people over the phone.
- Be careful of claims to test your E-bank.
- Please contact your relatives and friends immediately when you get messages about incidents involving them.
- Be aware of money transfer requirements from your boss or tutors on the phone.

TIPS FOR ACADEMIC STUDY

The following tips may help you be familiar with XJTLU academic life quickly.

Attendance is important; please learn to sign in online.

Cramming is not ideal. Focus on DDL; pace your study.

Ask questions about what you are learning, which can help you figure out the most important areas to focus on.

Use chapter review questions to reinforce what you know and find out what you miss.

To highlight key points is crucial, which can help you recognize the most important parts and make a last minute review.

Group study is a good way, which sometimes can help you with difficult parts.

Stay away from distractions. The public area rather than your dormitory is the ideal place to study.

Study will be much less effective if you are tired. Try to get a good night's sleep, or take a nap if you are tired.

Do not procrastinate. However, some people study best under stress, and they procrastinate as a way to get into their optimal study zone. Know your study sweet spot!

Reduce your stress levels. If you start to feel stressed, taking a few deep breaths can help you relax. Exercise and good time management can also help.

ACADEMIC SUPPORT

REGISTRY SERVICES AND SUPPORT

The registry supports xjtlu's core activities of teaching and learning, manages student registration data, and provides a variety of academic/registration-relevant services. It develops and uses e-Bridge (<https://ebridge.Xjtlu.Edu.Cn>), a xjtlu's web-based student information system, to maintain student registration data and online procedures to support academic registration relevant core activities.

ANNUAL REGISTRATION

The annual registration is the process of confirming your academic and personal information at the beginning of each academic year. All students should finish the online registration and financial registration on e-Bridge before the start of each academic year.

MODULE ENROLMENT AND TIMETABLE

The e-Bridge system maintains the information of your module enrolment, including compulsory modules required by your programme and the optional modules of your choice. Your personal timetable will be developed based on your finalised module list and be released on e-Bridge before the start of each semester. You will also be enrolled into your modules on xjtlu's virtual learning environment XJTLU Learning Mall, the online platform designed to support and enhance learning and teaching activities. You can access XJTLU Learning Mall anytime, anywhere in order to stay up-to-date with your modules, communicate with teachers, view important learning resources, submit coursework assignments, and so on.

ACADEMIC RECORDS, TRANSCRIPTS AND OTHER CERTIFICATES

E-Bridge maintains your personal information and academic records during your study at xjtlu. You can access e-Bridge to check your full academic records, including but not limited to module list, module marks, progression results, work placement records, and so on.

If you would like to obtain stamped official transcripts and other certificates, you need to log in to e-Bridge and complete the online request form on academic records page. A confirmation email will be sent to you once your request is submitted successfully. It usually takes five working days to process your request, and you will be notified via email once your documents are ready.

TRANSFER, SUSPENSION AND WITHDRAWAL

You are expected to complete your undergraduate studies as an xjtlu student. However, if there are situations where you suffer from health problems or other special difficulties, you may apply to transfer to another university. You can seek details about the procedure of transferring to another university from jiangsu department of education website http://jyt.Jiangsu.Gov.Cn/art/2017/12/29/art_38047_7215286.Html?Xipuxy=bolod3 or consult student academic services team in registry for advice.

Ideally you can complete your undergraduate studies in four consecutive academic years. However, there may be situations where you experience persistent problems with health or personal circumstances which may prevent you from continuing your studies temporarily. Under these circumstances, you may need to apply for suspension of your studies. Before you apply, please discuss with your family and consult your academic adviser, your development adviser and the registry office about your study plan. The application for suspension of studies shall normally be made before the start of each academic year. Note that normally a third application for suspension is not granted. And the maximum registration period for ug students is 8 years which includes all periods of repeating level of studies and suspension of studies.

We hope you will graduate successfully from the university, but we know that sometimes students have to leave before they complete their studies. Please discuss with your family, consult your academic adviser, your development adviser and the registry office if you are thinking of withdrawing. If you eventually decide to do so, you should complete the withdrawal form and submit it to the student academic services team in registry.

CONTACT REGISTRY

Above mentioned are some key services and support that will be provided to you by registry during your study at xjtlu, but this is not an exhaustive list. You can visit e-Bridge (<https://ebridge.Xjtlu.Edu.Cn>) for more details about registry, the e-bridge system, and academic policies and regulations etc.

You could also contact the student academic services team in registry, who are always prepared to provide you with advice and guidance relating to university academic policies, regulations and corresponding procedures and so on.

Email: academicervices@xjtlu.Edu.Cn

Office: 8th floor, central building.

Telephone: 0512-88161230

STUDENT GUIDE TO IT SERVICES

The Management Information Technology and System Office (MITS) supports IT infrastructure, application development, technology service, teaching and research activities.

XJTLU ACCOUNT

An Account for Everyone

An XJTLU account is given to all new students and consists of a unique User ID and an initial password.

Students can use this account to log into any campus IT system.

For example computers, Wi-Fi, E-mail, Box Cloud Storage, Library, and so on.

(To find the links to those systems: <https://guide.xjtlu.edu.cn/>)

LOG INTO A COMPUTER ON CAMPUS

- Press “Ctrl+Alt+Del”, to make the login window appear.
- Input your username and password and press “Enter” to login.

EMAIL

Students have a 1GB mailbox capacity. Emails can be managed or web access at <https://mail.xjtlu.edu.cn>.

TO UPDATE XJTLU ACCOUNT PASSWORD

Go to <https://mail.xjtlu.edu.cn> > Options > General > My Account > Click “Change your password”

STUDENT ID CARD

The card can also be used to:

- Borrow library books
- Self-service printing
- Pay for meals on the campus
- Pay for buses/subways

WI-FI(WIRELESS NETWORK)

Connect to University's free Wi-Fi network

- Connect to the XJTLU Wi-Fi network.
- Open any web page, and the authentication page will automatically pop up.
- Log in with your username and password. (Wireless device limit: 3)

COMPUTER LABS

- All campus PCs use Microsoft Windows or macOS and can be logged into by using your XJTLU username and password.
- All PCs are connected to the XJTLU network and can be used to browse the internet freely.
- Computer labs are open from 8:00 to 22:00 every day during the academic semester. During the university holidays, only a limited number of labs will be open.
- Personal belongings left in the lab will be removed between 8:00 - 9:00 AM by MITS every day. Students may freely access labs unless there is a class, maintenance work, or scheduled event.

IT SERVICE CENTRE

Location : 956A Central Building

TEL : 0512-88161250

Email: IT@xjtlu.edu.cn

SOFTWARE INSTALLATION

Location: Library 4F (Central Building)



LIBRARY

XJTLU Library plays the role of Research Support and Learning Centre in XJTLU by following the latest development trends of top university libraries around the world. The Library develops its collection by focusing on subject development and research requirements. Once shortlisted for the “Oscar Award” for architecture, the whole building is impressive for its design inspired by the “Taihu Stone”. The spatial partition stands for the dependence and integration of knowledge fragments. And the inner see-through spatial design seamlessly connects the practical functions.

Important information that you need to know:

Your University ID Card is also your Library Card; it can be used to enter and exit the library, borrow books, book group study rooms, print, copy and scan documents, as well as for the electronic lockers.

The Library not only provides a huge range of printed resources; including a wide variety of books, magazines and newspapers, but also provides digital resources such as academic journals and e-books, which can all be accessed at <http://lib.xjtlu.edu.cn/>.

Learning Commons, Group Study Rooms, Information Commons, as well as “Mobile Phone Zones” are also accessible in the library. The entire Library has Wi-Fi coverage, and is divided into different zones: “Absolute Quiet Zone”, “Quiet Zone” and “Light Discussion Zone”, to cater to all students’ preferences of research study, open discussion and team work.

The library not only organizes various activities for students, but also offers a variety of information skills training sessions. You can follow the Library’s WeChat account to keep up with the Library’s activities.

TIPS

- The library is a public area, please watch your belongings and do not leave any belongings unattended. The library is not responsible for any loss or damage of personal belongings left unattended in the library.
- Any personal items left in the Library premises after closing hours will be taken to the 3rd floor Library Service Counter each day without notification.



Library Homepage



Library Wechat



Freshmen Quick Start Guide

SYSTEM

XJTLU LEARNING MALL

The XJTLU Learning Mall (XJTLU-LM) acts as an innovation and entrepreneurial research and development hub as well as project and partner center. It provides “storefronts” online and onsite for premier global partners to share their learning content with its user audience. This audience includes XJTLU students and faculty as well as external users nationally and globally. It integrates onsite and online non-degree programmes developed by the university, industry and external partners. These programmes offer learning opportunities to a wide net of different education consumers to promote lifelong learning across China - online and onsite, campus to community.

The XJTLU-LM Online (and accompanying app for mobile devices) is also designed to support and enhance learning and teaching for XJTLU students and staff. It will enable students and teachers to engage in learning and teaching activities and services, both inside and outside of the classroom via mobiles, computers and tablets.

FOR XJTLU STUDENT USERS IN DEGREE PROGRAMMES, THE XJTLU-LM ONLINE MAKES IT POSSIBLE TO:

- Conveniently view and download content and resources provided by teachers (e.g., lecture notes, background reading materials, video and audio files, etc.).
- Easily record attendance at lectures, seminars, workshops, etc.
- Submit homework and coursework assignments as well as receive marks and feedback from your teacher.
- Quickly receive important news and announcements from teachers.
- Collaborate and work together with other students on group projects.
- ...and much more!

Beyond degree programmes for XJTLU students, the XJTLU-LM Online will provide non-degree learning content and services from national and global partners. These resources will include a competition portal, internship and employment opportunities, project opportunities, etc., as well as a wide variety of other exciting initiatives. It will also be a dynamic learning community in which students and other users can actively share their ideas. Everyone is welcome to contribute and develop this community and ecosystem through active contribution independently or as a member of XJTLU-LM Student Support Team.

The system is undergoing update and it will be put into use after September.

XJTLU APP

XJTLU APP is a uniform and easy way on mobile devices that intended to provide XJTLU staff and students with the means to benefit from accessing to the data produced by a wide range of application systems across the campus.

It is designed to integrate the services rather than generate the data itself to save enormous time for end-users.

You can download it by scanning QR code here.



e-Bridge

e-Bridge system is the web-based student information system of XJTLU, which is maintained by Registry for students to access their academic and personal information, academic policies and regulations and to perform a variety of tasks.

WITH E-BRIDGE YOU CAN:

- Complete annual online registration
- Update personal contact information
- Request for transcripts and relevant certificates
- Choose optional modules
- Apply for programme choice (for Year 1)
- Apply for programme transfer
- Apply for 2+2 study route (for Year 2)
- Register for graduation ceremony (for Year 4)

THERE IS ALSO A LOT OF INFORMATION AVAILABLE TO YOU, INCLUDING BUT NOT LIMITED TO:

- Class and exam timetables
- Contact information of Academic Adviser and Development Adviser
- Your Fee Invoice of the current academic year
- University policies and regulations
- Programme and Module specifications
- Marks and progression results
- Assessment Information

STUDENT SERVICE

STUDENT DEVELOPMENT ADVICE CENTRE

By integrating eastern and western culture and coordinating global resources, Xi'an Jiaotong-liverpool University (XJTLU) maintains a campus culture of Diversity, Regulation, Innovation, Freedom and Trust. In order to help domestic students adapt into the international culture of XJTLU and become elites with noble personality, outstanding skills and international competitiveness, Student Development Advice Centre (SDAC) coordinates various resources and provides comprehensive advisory and guidance services for students. It aims at providing effective supports for students as well as helping students achieve personal growth and development.

STUDENT DEVELOPMENT ADVISOR TEAM

As one of the Four-Tutor System, Student Development Advisors will, from the perspective of an advisor, guide you to experience The Three Transformations process, integrate multiple resources as coordinators and provide specialized supports as experts.

Student Development Advisor Team will provide necessary support to undergraduates of different stages, normally the freshmen and senior students. Their support mainly include the following aspects:

ADAPTATION AND INTEGRATION

For freshmen adaptation, SDAC cooperates with other student service teams to design and launch Induction Programme for freshmen.

For departmental integration, SDAC cooperates with schools and departments to organize Orientation for students.

GROUP SUPPORT

SDAC will take irregular visits to student dormitories. Pay attention to student life circumstances, listen to students' needs and set up a close relationship with students. They will also arrange the military trainings for freshmen to strengthen their national defense sense and organization discipline, and develop favorable study and life habits.

INDIVIDUAL-SPECIFIC ATTENTION

Student development advisors pay close attention to general performance of students at university and provide daily support. They also offer specific support to students facing challenge in life and study such as academic risks (including module failure and repeat, exam absence), adaptation difficulties and interpersonal relationship problems.

MORAL AND POLITICAL EDUCATION

SDAC has held morality as the root of education practices, with a dedication to cultivation of students to global citizens of comprehensive competences. They are also responsible for such as party member enrollment, political review, and campus safety relevant work.

PROGRAMME SUPPORT

WingPlus is a platform which coordinates resources from different offices at XJTLU to support student development. Students could participate in various support and enhancement programmes on the platform.

CLASS MANAGEMENT

SDAC divides administrative classes for freshmen and carries out various educational and teaching practices. The administrative class will be disbanded when students choose majors, and student development advisors still support the students based on the department. The selection and training of class leaders is also a part of class management that conducive to improving students' ability of self-management and peer assistance.

EMERGENCY MANAGEMENT

Student development advisors respond to emergency cases according to emergency procedures of the university.

For further information about the Student Development Advice Centre, please email sda@xjtlu.edu.cn.

YOU STOP, WE HELP -- HOW CAN I FIND HELP FROM ONE-STOP?

One-stop Student Service Centre, the first source of answers about student insurance, household, student archive and other non-academic affairs. Make One-stop your first stop! Let's get to know One-stop from the following questions.



STUDENT ONE-STOP

WHAT'S THE ONE-STOP?

Since its establishment in 2009, One-stop Student Service Centre has been committed to providing excellent services and support to all students and aims to create an efficient communication channel among students, parents and the university and among various departments within the university.

It covers services like consultation, on-campus affairs and other relevant issues. Students can find solutions to most non-academic problems here.

WOULD YOU PLEASE DETAIL THE SERVICES AT ONE-STOP?

Generally speaking, our service is divided into two parts: consultations and applications.

Consultation service accepts any non-academic XJTLU-relevant enquiries. If you are confused or in difficulties, contact us and we will give you initial assistance and refer you to appropriate specialist teams if necessary.

- Application services are listed in detail as below.
- Medical insurance
- Household transfer application
- Student archive application
- Student ID card replacement application
- Student booklet registration and replacement application
- Facilities booking for student organizations
- Scholarship application (non-academic)
- Provincial and school appraisal

Additionally, One-stop accepts suggestions and complaints. Any suggestion or complaint will be welcome and responded timely by us.

HOW CAN I GET ONE-STOP SERVICE?

You may achieve one-stop service by following ways.

On-site: Central Building-115E
 Office-hour: 9:00-12:00, 13:00-17:00
 Phone: 0512-88161854
 E-mail: onestop@xjtlu.edu.cn
 Website: <http://studentonestop.xjtlu.edu.cn/>



Student One-stop in My Eyes Scan us to submit your application Student One-stop Quick Flash intro (Chinese-English)

FURTHER INFORMATION:
 FAQs on Official Website: <http://guide.xjtlu.edu.cn/faq-osscc.html>
 Regulations and Procedures at One-stop: <http://studentonestop.xjtlu.edu.cn/>

STUDENT COUNSELLING CENTRE (SCC)

PART 1 I WANT TO KNOW MORE ABOUT COUNSELLING.

WHAT IS COUNSELLING?

Clients bring their problems to counselling and then, under the joint efforts of clients and counsellors, clients find the inner insight collaboratively with the counsellor. Further on, clients will develop further self-growth.

Counselling could be conducted not only by talking, but also by sand play or art therapy. During this process, relative to giving direct guidance, education or opinions, counsellors put more efforts on exploring clients' own power to improve the current distresses. Only in this way could the counsellor help clients develop the ability to deal with difficult situations after the end of counselling.

HOW CAN COUNSELLING HELP ME?

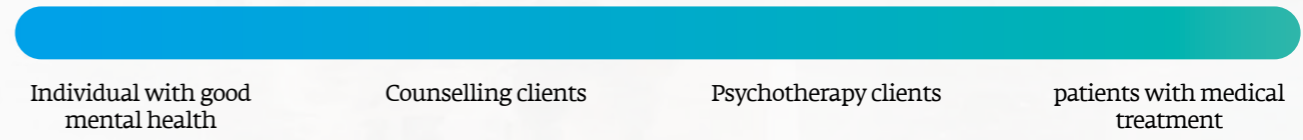
Listen and Understanding. In counselling, what you will first get is genuine attention to listen to your current issues. The counsellor will try the best to understand your feelings which is called empathy. Such experience will help you to feel safe and become more engaged.

Respect and Acceptance. No matter who you are or what you are going through, no matter what you think, you will find self-worth and self-energy in the counselling atmosphere that works towards unconditional respect and acceptance.

Professional Knowledge. With a professional background, the counsellor is capable of guiding you to look at your struggle from a different perspective. During this process, you may change your way of thinking, jump out of the box and relate to yourself and the world differently.

IS COUNSELLING THE SAME AS THERAPY?

Generally speaking, counselling is different from therapy but they do have overlaps. A person's mental state is an ongoing process of change, so there is not a very clear demarcation point akin to spectrum. Sometimes counselling and psychotherapy will overlap but it is necessary for mental health professionals to act within their scope of competency.



Here are the differences between counselling and psychotherapy:

DIFFERENCES	COUNSELLING	PSYCHOTHERAPY
PERSON	Persons who are mentally troubled.	Persons with severe mental illness, who's usually in medical treatment.
CONTENT	Mainly to address a variety of psychological problems encountered in general life such as learning difficulties, job problems, marital problems, family problems and interpersonal problems.	Mainly to make diagnosis and treat certain patients with abnormal mental symptoms, such as neurosis, sexual metamorphosis, personality disorders, behavioral disorders and psychosomatic diseases.
TARGET	Promote mental health—get rid of psychological distress, enhance the ability to adapt, fully develop their potential and improve their level of developmental ability.	Reduce abnormal symptoms—Eliminate or relieve symptoms, return to normal life.

The Student Counselling Centre (short for SCC) provides counselling for all students, and also provides supportive counselling for some students who are in medical treatment.

WHEN DO I NEED COUNSELLING?

Negative feelings could be one of the signs. When you are left out or misunderstood, when you feel abandoned or unloved, when you feel pain with nobody to talk to, you can ask for help from a counsellor. Besides, when you are confused about the future, do not know how to make decisions, or feel confused about yourself and want to explore who you are, counselling can also be a good choice.

Someone may think that only when I am faced with a huge problem, I need to seek the help for counselling. Each and every issue we struggle with is of importance. We don't compare one student's problems to another's. Asking for help does not mean that you are a coward, and real courage does not mean that you need to fight alone.

HOW LONG WILL COUNSELLING TAKE TO WORK?

Doctors cannot guarantee that medicine takes effect immediately, the psychological symptoms will be lessened in this manner in this amount of time. The same principle applies to counsellors. Everyone has different problems. Everyone's situation is unique and as such the method of counselling, the time it takes and the issues therein are specific to the individual.

HOW OFTEN DO I MEET WITH MY COUNSELLOR?

This will be influenced by several factors, such as the content of the counselling, the target, the status of the clients, the suitable time for both and so on. Usually, the counsellor will make a recommendation to the client and then you two will agree on a suitable counselling frequency. For example, once a week (most common), twice a week, or every two weeks.

HOW LONG WILL THE COUNSELLING BE FOR ONE SESSION?

It is usually 50 minutes. In special circumstances (such as crisis intervention) or trauma treatment time may be extended to several hours. There are also some counsellors who follow the "flexible counselling time" style. Counsellors and clients should determine the length of each session together.

WILL THE COUNSELLOR GIVE ME SPECIFIC GUIDANCE?

We often hear the client ask "what should I do?" "What choice should I make?" "Can you give me some advice?" The counsellor will decide whether to give specific guidance on the basis of a careful assessment and always with the purpose of the well-being of the clients.

Specific guidance may help solve the present problem, but it cannot help the clients to increase their ability of solving the problem himself. When they encounter a similar situation, they may not be able to rely on their own strength to face and solve it.

WILL IT BE EFFECTIVE IF I ATTEND COUNSELLING ON BEHALF OF SOMEONE ELSE?

When you come to the counselling for someone else, we can understand their situation through you, and then we may provide some interventions, knowledge and emotional management techniques. It may give rise to a certain degree of change. However, as we cannot understand their real thoughts and emotional experience, the effect is very limited. If you want to make a greater change, we recommend that your classmate or others come to counselling personally so that the counsellor will assess all aspects of them and then provide targeted counselling.

PART 2 | WANT TO START COUNSELLING.

HOW TO MAKE AN APPOINTMENT FOR INDIVIDUAL COUNSELLING?

You can make an appointment for individual counselling via email, phone call, and website or in person at our reception. Your initial assessment session will be arranged as soon as possible after you complete and submit your application form. During the session, there will be a chance for you to discuss your counselling expectation with the counsellor.

WHAT WOULD HAPPEN AFTER YOUR APPLICATION?

After you successfully submit your pre-counselling form, you will be invited to attend the initial assessment session according to the available slots you choose on the form. In the initial assessment session, you will have a chance to discuss your current issues, your counselling expectation and how counselling works with the counsellor. Certainly, you can bring up your concerns about counselling and make your own decision on whether to require the formal counselling sessions or not.

If you would like to have the formal individual counselling, you will be arranged to one-to-one short-term counselling. Each session normally lasts for 50 minutes with the same counsellor once a week.

You will also have a chance to fill in the evaluation questionnaire to leave any useful feedback, when you and your counsellor both agree to end the counselling relationship. You are always welcomed to make another appointment next time when you need it.

WHY DO YOU NEED TO MAKE AN APPOINTMENT IN ADVANCE?

First of all, of course, making an appointment in advance guarantees that the client and counsellor are able to arrange their time in advance. This allows for a secured period of time for the session to be held without interruption.

In addition, the appointment system can also help the counsellor understand the relevant information of the clients in advance. During the waiting time, clients have also begun to organize and explore their own inner feelings and thoughts.

Therefore, the preparation on both the environment and psychology can improve the quality and efficiency of counselling.

WHAT CAN I DO WHEN I DO NOT WANT TO MAKE AN APPOINTMENT?

The centre also provides drop-in sessions if you do not require an appointment. Drop-in session is not formal counselling. Drop-in session applies to the situations as follows: you are not sure whether you need counselling or not; you want to get advice for one of your friends; you just want to know more about counselling and so on.



WHAT SHOULD I DO IF THERE IS AN EMERGENCY?

It is important to note that when you or your friends encounter an emergency, such as someone who wants to kill themselves, be sure to look for resources as soon as possible such as chatting with trusted friends or turning to the school teacher for help. If someone has tried to commit suicide or self-harm, for whatever reason, be sure to call the ambulance 120 first to ensure the safety of those affected.

If someone has illusion or delusion, seeking medical treatment immediately is the best choice. Our services are not designed to meet active crises.

ALTHOUGH I WOULD LIKE TO MAKE AN APPOINTMENT FOR COUNSELLING, I STILL FIND IT DIFFICULT TO TALK TO OTHERS ABOUT MY OWN PROBLEMS.

When we encounter difficulty, self-esteem damage will usually occur. It will be shameful to discuss this with others. Therefore, the principle of confidentiality is one of the most important principles of counselling ethics. Counsellors think highly of your privacy throughout the process.

In fact, it is often the experience that is difficult to express or is left unfinished that has caused the self-development suppression and interpersonal problems. Feedback from counselling attendees has shown that clients are always able to get personal and interpersonal development through the full expression of their feelings during counselling.

We want to clarify that counsellors aren't fully able to read one's mind, especially if a client isn't being fully honest. Therefore, if one chooses to undergo counselling they need to be voluntary. Counselling is a process of cooperation between client and counsellor to seek a solution to the problem. Both sides need to make efforts, trust each other, and be honest with each other. A stable and firm counselling relationship is considered a factor of effective counselling.

WHAT ISSUES CAN I TAKE TO XJTLU STUDENT COUNSELLING CENTRE?

The scope of counselling includes: academic stress, interpersonal problems, emotional confusion, family relationships, career planning, sexual psychology and other issues; adjuvant counselling for depression, compulsion, anxiety, social phobia and other psychological disorders. It should be noted that the counselling for all kinds of psychological disorders can only have the effect and significance on the basis of medical diagnosis and stable medication.

HOW MANY COUNSELLORS DO WE HAVE IN SCC?

There are several full-time Chinese counsellors, one international counsellor, and some part-time counsellors, as well as several supervisors. They all have a professional psychological background and experienced counselling practice. Get more information about each counselor through website.

PART 3 I WANT TO KNOW MORE ABOUT EMOTIONAL SIGNALS.

ANXIETY THAT IS SO OVERWHELMING

In daily life, everyone has feeling of tension or anxiety more or less. Some may have long-term anxiety problems. When faced with danger and stress, anxiety is actually an instinctive reaction. For example, before exams, if you haven't reviewed well, you may be nervous and worried which is exactly what we call anxiety. At this time, we usually take the time to review the examination and actively do things to reduce anxiety. Such kind of anxiety is a protective response and isn't necessarily a bad thing.

In general, most of our anxiety is caused by real problems, such as examinations, too many homework, higher self-expectation and stress from parents. But there are students who become anxious because they are too worried about becoming anxious. The occurrence of anxiety is often associated with early experiences, personality traits, and higher self-expectations and so on.

When the symptoms of anxiety show up, we can do some self-relaxation activities, such as listening to music, taking a walk, sorting out ideas and so on. All of these may help us relieve anxiety. If the self-adjustment doesn't work, we recommend you to seek the help of a professional.

DEPRESSIVE MOOD THAT IS HARD TO GET RID OF

Everyone may feel depressed sometimes. When we stay in a depressed mood for an extended period of time, we usually will label ourselves with having a Depressive Disorder. Normally for a depressed mood, you can find out the reason and it will not last for too long. But a depressive disorder means that you stay in the depression for over two weeks or even longer and usually there is no easily identifiable cause. It is usually described as "I'm not interested in anything," "Nothing makes me happy" or "I don't want to do anything." This includes having no interest in things that one used to like.

We don't know why people get depressive disorder. No study can really tell us which part of the brain or body is ill. All we know is that biology, mentality and the environment all have an impact on it. It has no relationship with our personal will and effort.

When we are suffering from depression, we don't need to overcome these problems only by ourselves. Seeking help from professionals, doctors (who may prescribe medication) as well as the understanding and acceptance from others will make us stronger to overcome the current struggle.

POOR SLEEP

Sleep disorders refer to sleeping too little, sleeping too much, low quality sleep or sleep with certain symptoms. Almost everyone has had bad sleep, but the group with real sleep disorders accounted for only 27% (including the elderly) according to research statistics.

Common causes for sleep disorders are: psychological factors, physical factors, living environment factors and certain drug and food use. Studies have shown that more than 85% of people suffering from insomnia are caused by psychological factors, such as learning tensions, test stress, anxiety, fear, life contradictions, and quarrels with friends and so on. In particular, persons who have no one to talk to may be more likely to get insomnia.

Students with mild sleep disorders can moderate the sympathetic nervous system by exercising moderately during the daytime. If with long-term poor sleep, it is recommended to improve the psychological quality, create a good sleep environment, develop good sleep habits, and actively participate in physical exercise. At the same time, seeking help from medical or psychological professionals may be advisable.

ADDICTED TO VIRTUAL WORLD TO AVOID REAL LIFE

Internet addiction is a chronic or cyclical state caused by the repetitive use of the internet which is accompanied by a marked repulsion when not actively on the internet. There is also a psychological and physiological dependency for the pleasure induced by the Internet.

We tend to view internet-addiction as a signal of asking for help rather than a real addiction problem. For students who get this problem, the internet is their shelter. When we are facing lots of problems and difficulties that we cannot handle, we may choose the internet to help us escape from reality and gain a sense of achievement.

If at present you are really troubled by the problem of Internet addiction, what you need is to find out why and try to accept yourself, resume relationships with your family, and get understanding and emotional support from family and friends. At the same time you also need to strengthen your self-adjustment and management and try to clarify what the real problem is. Try to gradually acquire self-efficacy in your daily life and develop the ability to solve problems.

PART 4 OTHER SERVICES WE PROVIDE

ONLINE ADAPTATION SURVEY FOR FIRST-YEAR STUDENTS

In order to gain better knowledge of adaptability of new students, SCC will invite all first-year students to complete online test, which will also remain confidential.

DROP-IN SESSION

Quick counselling with no appointment needed. If you are not ready for the individual counselling once a week, drop-in session would be a good experience for you. It is more flexible and timely than the individual counselling to deal with emotional distresses. It normally lasts for 30 minutes and you will be listened with empathy and provided with emotional supports.

EMAIL HELPLINE

If you are not ready for counselling in person, you can write down your concerns or issues and send it to us via email. Counsellors will get back to you via email as soon as possible. Email: Mentalhealth@xjtlu.edu.cn

PSYCHOLOGY WORKSHOP

SCC will invite professional counsellors outside the university to hold psychology workshops in different topics, such as "Mindfulness and meditation", "Interpersonal Communication", "Manage your stress" and "Emotion Lab", to all students at XJTLU.

GROUP COUNSELLING

SCC also provides group counselling services, approximately 6-10 individuals meet face-to-face with a trained group counselor. Group counselling is commonly used for people with normal mental problems and it is usually last for 6-10 times, 1.5h-2h each time.



Example Case:

This is a story of adapting to university life



SCC Website:

Log in using your university account after enrollment to make an appointment. Or know more about our workshops and booklists on psychology and counselling.

PART 5 EXCEPTIONS

In the following circumstances, both SCC and counselor have the right to terminate or refuse providing counselling services.

ABSENCE POLICY	To ensure that we are able to serve all those in need, if clients do not show up for the appointment without notification two times in a row, the ongoing counselling session will be cancelled automatically and clients will need to make another appointment.
HARM	Counselors may terminate therapy when in jeopardy of harm by the clients, including both physical and verbal.
THREATS	Counselors may terminate therapy when threatened or otherwise endangered by the client/patient or another person with whom the client/patient has a relationship.
HARASSMENT	Counselors may terminate therapy when harassed by clients.
SEVERE MENTAL ILLNESS	According to the professional evaluation of psychological counselors, some clients may need medical treatment other than psychological counselling, and would be recommended to medical institutions in accordance with the Mental Health Law of the People's Republic of China (e.g. Suzhou Guangji Hospital, Shanghai Mental Health). In this event, SCC will inform the parents and terminate counselling. Clients under psychiatric treatment should follow the treatment plan set forth by their psychiatrist and if they have the ability to get help from counselling, SCC would provide supplementary counselling.

STUDENT CLUB AND ORGANIZATION

OVERVIEW OF STUDENT CLUBS AND ORGANIZATIONS

Student Clubs and Organizations provide a platform for students' self-management and self-development. Student Club Support Center (SCS) is committed to creating a dynamic and kaleidoscopic campus life and culture for students. Guided by the vision & missions and education model of XJTU, our student clubs and organizations strive to be internationally unique by featuring interest-driven, learning-centered and development-oriented programs. XJTU has a total of 160 registered clubs and organizations in 7 categories, including 31 functional organizations, 10 community service clubs, 25 academic clubs, 33 art clubs, 13 recreational clubs, 38 sport clubs and 10 varsities. All of the clubs and organizations recruit new members at fresher's fair during induction week. For more detailed information, please scan the QR code.

SOCIAL PRACTICE

How to analyze data? How the enterprises work? What is the future of the urban villages? What is the experience of supporting education? What lifestyle do global volunteers have? During the holiday, the student teams are able to find the answers by exploring different areas of the social practice. Social practice helps students enhance learning ability, innovation ability and sense of social responsibility; it is the first step of XJTUers being young adults.

VOLUNTEER ACADEMY

Volunteer Academy is the official platform which offers support and service to the volunteer activities in XJTU. Since it was established, it not only helps organize volunteering activities both in school and out of school together, but also provides professional volunteer trainings, services and supports to society. Meanwhile, it holds exchanging meetings regularly in order to advocate the concept of volunteering to society. Students who are interested in volunteer activities can register through the recruitment email sent by SAO and the WeChat Account of the Volunteer Academy to participate in volunteer activities.

CONTACT THE STUDENT CLUB SUPPORT CENTRE

Email: scs@xjtu.edu.cn
 Telephone: 0512-81883297
 Visit Us: Room 256, Central Building
 Official Website: <https://engage.xjtu.edu.cn/>
 Wechat Subscription: 西浦 Student Engagement

WIN-X LEADERSHIP TRAINING PROGRAM

WinX-Leadership Training is a program aiming to develop XJTU students' leadership skills through projects running within given times. It's designed to have a profound and lasting impact on students, especially the student club leaders, by creating opportunities for them to develop their capabilities and skills in strategic planning, decision making, project executing, etc. and lead them to make more and better contributions to the communities and even change the world.

NICE TO MEET U

The Welcome Gala for new students is supported by the Art Center, sponsored by the Arts Association Council, and organized by various art troupes and societies. It is the largest annual party with the largest number of participants and the most influential party to welcome new students. The format of the party includes dance, singing, magic, poetry recitation, musical instrument performance, stage play and many other programs. It has received unanimous praise from teachers and students.



WeChat Subscription of Student Club Support Centre



WeChat Subscription of the Volunteer Academy



ARTS CENTER

Arts Centre (AC) of Xi'an Jiaotong-Liverpool University is an international, research-led and creative art institute. AC focuses on the theme "Art Knows No Bound" and carries out a series of Art Activities through guidance, service from teachers and initiative, innovation from students. Arts Centre includes seventeen student organizations, namely Art Association (including Art Association Council, Orchestra, Chinese Orchestra, Chorus, Dancing Troupe, Drama Troupe, Keyboard Group, Calligraphy and Painting Group, Model Team, Host and Broadcasting Troupe, Art Association Product Creating Troupe), Art Training Centre, Art Club Council (including seventeen art clubs, such as Photography Association, Doodle Club and Movie Club), A-design, SS Music Studio, Art and Culture Communication Council and Travel Art.

Arts Center organizes optional art courses, project "Talk about art" and Art Master classes, supports all kinds of on-campus and off-campus artistic activities, art practices and artistic interchange activities. AC also organizes and takes part in all kinds of art competitions and on-campus and off-campus events and celebration ceremonies.

MISSIONS AND EDUCATION MODEL

AC is striving to promote students' spiritual and physical well-being, enrich the students' campus life, help students form decent aesthetic standards, develop harmonious interpersonal relationships and team spirit stimulates enthusiastic emotion and innovative awareness, improve students' artistic accomplishment, expand students' outlook, and promote students' comprehensive development.

AC will achieve the objectives of promoting education through art in the following forms: art courses, art lectures, art outreach courses, art practice platform, and art e-learning platform. Students are encouraged to participate in all these activities.



Link to more information/QR Code/Pictures
https://engage.xjtlu.edu.cn/support_center/node/16

CONTACTS

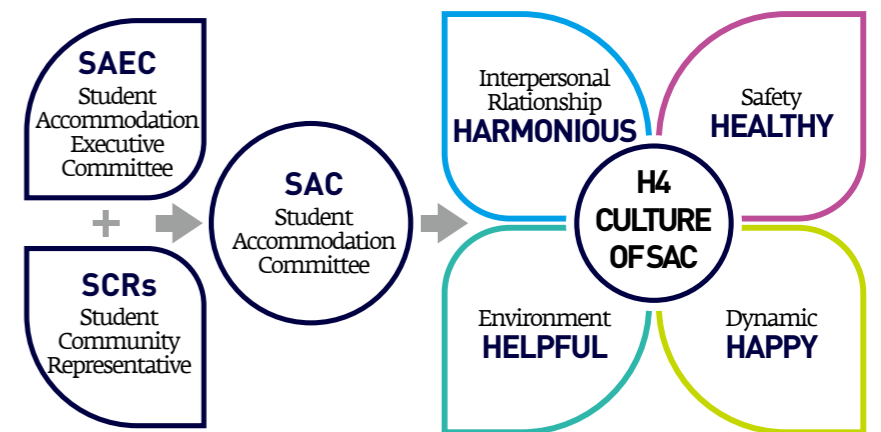
Email: artcenter@xjtlu.edu.cn
 Office: 207 GM207 South Campus
 Official Website : <http://club.xjtlu.edu.cn/>

LOCAL STUDENT ACCOMMODATION SUPPORT

Dushu Lake Science & Education Innovation District adopts the socialization management model of student accommodation. Local student dorms were built and managed by Suzhou Dushu Lake Science & Education Development Limited Company which locates at Student Accommodation Areas nearby the campus. Property Management Company is employed by SIPEDI company and offers total services to students in the local dorms. Four undergraduates share one dorm which equips washroom, furniture, air-conditioner, water-heater and others. Room facilities may be a little different as halls were built in different time. The local accommodation resources and services in this town are shared by XJTU students and students of other universities together.

Student Accommodation Support Team of XJTU offers daily accommodation consultation and application services to local students. Student Accommodation Committee (SAC) is a student self-governed organization. SAC Service Center provides supports such as dorm consultation, suggestion collection, dorm communications, dorm activities etc. As the bridge connecting students and accommodation suppliers, SAC positively communicates and coordinates with the proprietor and the property management offices to seek better services for schoolmates. For local accommodation support, you are suggested to contact SAST or SAC.

DORM IS MORE A COMMUNITY



CONTACT US

Location: 115E, Central Building
 Tel.: 0512-88161857
 Mail: Accommodation@xjtlu.edu.cn
 Working Time: 9:00-12:00 & 13:00-17:00 Mon. to Fri.

CAREER CENTRE

XJTU Career Centre provides students with career planning, further study guidance, internship opportunities, innovation and entrepreneurship guidance, external mentor program, graduation dispatch service, etc. in order to open a window for students towards society, to promote students' cognition of society, life and career and to improve students' comprehensive quality and professional competitiveness.

EMPLOYMENT OPTIMIZATION

Career Centre provides students with abundant employment resources to help develop their career interests and abilities. Students are welcome to log in Career Centre official website and WeChat official account to obtain all the information of open positions, internships and employment activities. Students can also sign up for various types of career activities, such as job fairs, career talks, workshops on resume writing and interview skills, etc.



CAREER GUIDANCE

Career Centre provides sufficient support in terms of students' self-development and career planning. Through lectures, workshops, partnering with career counselors, students will benefit from personalized guidance on setting and maintaining career goals, gaining self and industrial awareness, building business networks and making wise career choices. Furthermore, Online Career Evaluation Test helps learn about self-interests, skills, values and personality traits.



EXTERNAL MENTOR PROJECT

Career Centre sets up a unique team—external mentor group. They are elites from different industries with affinity to education and generosity. They support students to gain more insights about industries and life experiences.



INNOVATION AND ENTREPRENEURSHIP

Career Centre sticks to the actual needs of university students' innovative undertaking demand as the guidance, encourages and fosters innovation and entrepreneurship, providing students with practice platform to improve entrepreneurial qualities and comprehensive abilities. It also offers incubator support for students' entrepreneur projects to promote the resources integration symbiotic between scientific research, mentors, and local enterprises.



GRADUATE SERVICE

Graduate Service is provided with the guidance of "Five-star Education" model of XJTU and in line with the "student-centered" service tenet. The Hukou & archive dispatch service will be provided to undergraduates, postgraduates and doctoral students from XJTU at the time of their graduation.



CONTACT US

Email: careers@xjtu.edu.cn
 Phone: 0512-81888308
 Location: 102 E Central Building
 Official Website: <http://careers.xjtu.edu.cn/>
 Wechat Account: 西浦就业 careercentre



Official Website



Wechat Account

ALUMNI ASSOCIATION

XJTU Alumni Association was founded in August 2010. It is a world-wide nonprofit organization of XJTU graduates and has 19 branches. These branches cover 10 areas including Beijing, Shanghai, Hong Kong-Guangdong, Jiangsu, Shaanxi, Zhejiang, U.K., Singapore, Canada and Australia and 9 faculties including International Business Suzhou, XJTU School of Film and TV Arts, Civil Engineering, Computer Science and Software Engineering, Urban Planning and Design, Electrical and Electronic Engineering, Mathematical Sciences, Architecture and China Studies. More and more branches will be established in the near future.

XJTU Alumni Association aims to promote the welfare of XJTU and to establish a mutually beneficial relationship between XJTU and its alumni. It helps alumni connect with the University and fellow graduates through a wealth of club activities, continuing education programs, online services, and alumni events around the world. Here, you will gain the experience of alumni's study and employment, the opportunity to communicate with them face to face, chance to participate in colorful alumni activities around the world, and the platform to show and improve yourself.

Wherever you are, XJTU Alumni Association welcomes all XJTU alumni to join our global network.

ALUMNI ASSOCIATION—SERVICES & SUPPORTS

THE XJTU ALUMNI CARD	The Alumni Card retains most of the functions of Student Card. The new Alumni Card have been upgraded into Jiangsu T-Union which has the public transportation function in over 200 cities since 2019. According to XJTU policy, alumni can have access to university facilities such as school library and gymnasium with Alumni Card.
THE ALUMNI PERMANENT ACCOUNT	By using the alumni permanent account, you can log in XJTU Alumni Website, e-Bridge, Career Centre, connect the WIFI (SSID: XJTU) at XJTU campus etc. You will have the permanent alumni e-mail account as well.
CAREER DEVELOPMENT SERVICE	All the members of XJTU Alumni Association are eligible for the free career development and advice services from XJTU within 5 years after their graduation. The Career Development Office will help provide dispatch service for Chinese mainland students after graduation.
ALUMNI ACTIVITIES	XJTU Alumni Association will hold Alumni Forum, Homecoming Day and Graduation Ball every year. Besides, local alumni branches will organize alumni gathering events and forums regularly as well.
OTHER SERVICES	Library Service, Further Education Service, Tuition-Waiver, Event Organizing and Supporting Service, etc.

CONTACT US

E-mail: alumni@xjtu.edu.cn

Tel: (86) (0)512 8816 1853 or (86) (0)512 8816 1869

Website: <http://alumni.xjtu.edu.cn/>

Weibo: 西交利物浦大学校友会

WeChat: xjtu_alumni



PHYSICAL EDUCATION CENTRE

The Physical Education Centre at Xi'an Jiaotong-Liverpool University is the central agency for the service of the university's physical education teaching and sports activities. Our commitment is to provide consistently reliable service in all sports matters and empower lives through sports.

SERVICE

PHYSICAL EDUCATION TEACHING TEAM	Physical Education Teaching Team is responsible for PE curriculum teaching, physical fitness testing, physical health promotion and other related work in the whole university. The subjects of the physical education classes not only including traditional sports like table tennis, basketball and aerobics, but also some attractive sports like Golf, Frisbee and other varieties of sports which are popular and warm-welcomed among teenagers. Acting upon the Five-star educational mode and under the guiding ideology of "Health comes first" and "lifelong sports", XJTU PE teaching is devoted to fostering students' interests in sports, developing their relative abilities and good habits, Initiative & Rigorous Executive Capability and Lifelong Learning Capability.
SPORTS CLUBS	The Sports Centre oversees 36 sports clubs and 10 athletic teams with professional guidance and support. Here in XJTU, students can either choose club sports for recreational purpose or try to enroll in team sports for competitive play.
ACTIVITIES	XJTU values the lessons that have long been taught by athletic participation: the pursuit of excellence, ethical and responsible behavior, adherence to the rules, leadership and strength of character, and sportsmanship. Sports at XJTU builds community through the engagement of students, faculty, and staff, and creates a portal through which neighboring communities can enjoy the XJTU experience. The Sports Centre organizes brand intramural events, e.g., Freshmen Cup, Football Tournament (5 Aside, 7 Aside), Basketball Tournament (3v3, Yangfan Cup), Sports Carnival, etc. Also, the centre prepares varsity teams for competitions and holds extramural activities, e.g., the XJTU International Sports Tournament.
FACILITIES	The sports complex provides fields and facilities for over 20 sports, including regular ones (e.g., basketball, badminton, table tennis, fitness, etc.) and featured sports (e.g., climbing, golf, fencing, archery, etc.).

CONTACTS

On-site: PE Teaching GM 103

Phone: 0512-81889029

E-mail: PEC@xjtu.edu.cn

On-site: Sports Centre GM102

Phone: 0512-81889074

E-mail: Sports.Centre@xjtu.edu.cn

UNIVERSITY SERVICE STATIONS

The first step towards success is Knowing how to obtain resources and supports initiatively.



XJTU SERVICE

STUDENT DEVELOPMENT ADVICE CENTRE

✉ SDA@xjtl.edu.cn

STUDENT ACCOMMODATION COMMITTEE

☎ 0512-88161857
✉ accommodation@xjtl.edu.cn

ONE-STOP STUDENT SERVICE CENTRE

☎ 0512-88161854
✉ onestop@xjtl.edu.cn

STUDENT COUNSELLING CENTRE

☎ 0512-88161815
✉ counselling@xjtl.edu.cn
🌐 <https://counselling.xjtl.edu.cn>

CAREER CENTRE

☎ 0512-81888309
✉ careers@xjtl.edu.cn
🌐 <http://careers.xjtl.edu.cn/>



IT SERVICE

☎ 0512-88161250
✉ IT@xjtl.edu.cn



BUDDY PROGRAMME

☎ 0512-81883293
✉ buddy@xjtl.edu.cn



ALUMNI SERVICE

☎ 0512-88161853, 88161869
✉ alumni@xjtl.edu.cn



STUDENT ORGANIZATION AND SUPPORT

☎ 0512-81884969
✉ scs@xjtl.edu.cn



REGISTRY SERVICES AND SUPPORT

☎ 0512-88161230
✉ academicservices@xjtl.edu.cn

PHYSICAL EDUCATION CENTRE

☎ 0512-81889029
✉ PEC@xjtl.edu.cn

SPORTS CENTRE

☎ 0512-81889074
✉ Sports.Centre@xjtl.edu.cn