

# XJTLU

## POSTGRADUATE

### 2019



# UK DEGREE IN CHINA



# CONTENTS

**3-4**

WELCOME

**5-6**

XI'AN JIAOTONG-  
LIVERPOOL  
UNIVERSITY

**7-8**

XJTLU AT A GLANCE

**9-10**

EXPERIENCE CHINA

**11-12**

WHY XJTLU?

**13-14**

RESEARCH-LED

**15-16**

PHD STUDY

**17-18**

ADDITIONAL  
LEARNING ACTIVITIES

**19-20**

ACADEMIC STAFF

**21-22**

STUDENT LIFE

**23-24**

AWARD-WINNING  
CAMPUS

**25-26**

ACCOMMODATION

**27-28**

INTERNATIONAL STUDENT  
SUPPORT

**29-30**

CAREERS AND  
EMPLOYABILITY

**31-32**

ALUMNI

**32-36**

ADMISSION TO XJTLU

**37-38**

PRE-SESSIONAL ENGLISH  
(PSE) COURSE

**39-138**

DEGREE PROGRAMMES

DEPARTMENT OF ARCHITECTURE 47-50

Master of Architectural Design

DEPARTMENT OF BIOLOGICAL SCIENCES 51-54

MRes Molecular Bioscience

DEPARTMENT OF CHEMISTRY 55-58

MRes Advanced Chemical Sciences

DEPARTMENT OF CHINA STUDIES 59-62

MA China Studies

DEPARTMENT OF CIVIL ENGINEERING 63-68

MSc Civil Engineering

MSc Sustainable Construction

DEPARTMENT OF COMPUTER SCIENCE AND SOFTWARE ENGINEERING 69-78

MSc Applied Informatics

MRes Computer Science

MSc Social Computing

MSc Financial Computing

DEPARTMENT OF ELECTRICAL AND ELECTRONIC ENGINEERING 79-86

MRes Low Carbon Electrical Power and Energy Technology

MSc Multimedia Telecommunications

MSc Sustainable Energy Technology

DEPARTMENT OF ENGLISH 87-92

MA Mass Media Translation

MA TESOL

XJTLU SCHOOL OF FILM AND TV ARTS 93-96

MSc Media and Communication

DEPARTMENT OF INDUSTRIAL DESIGN 97-100

MDes Industrial Design

DEPARTMENT OF MATHEMATICAL SCIENCE 101-104

MSc Financial Mathematics

DEPARTMENT OF URBAN PLANNING DESIGN 105-110

MSc Urban Planning (specialisation in Urban Design)

MSc Urban Planning

INSTITUTE OF LEADERSHIP AND EDUCATION ADVANCED DEVELOPMENT 111-114

MA Global Education

INTERNATIONAL BUSINESS SCHOOL SUZHOU 115-138

MSc Business Analytics

MSc Economics and Finance

MSc Finance

MSc International Financial Management

MSc Investment Management

MSc Management

MSc Operations and Supply Chain Management

MSc Professional Accounting

MSc Project Management

International MBA

# WELCOME



The 21st century presents young people around the world with major challenges to overcome. Not only is the world changing at an incredible speed, but it is becoming a much smaller place in addition to becoming more complex and confusing.

As the future entrepreneurs, scientists, engineers, marketers, and executives of this increasingly globalised environment, you must develop knowledge, skills and capabilities that equip you well for the incredibly dynamic and turbulent times in which we live.

XJTLU's vision is to establish a research-led, truly international campus here in Suzhou, with a mix of Chinese and international students studying at both undergraduate and postgraduate levels.

XJTLU is perfectly placed to give you the opportunity to explore China in the 21st century. We hope that XJTLU can help you develop into a truly global citizen with the skills, knowledge, abilities, temperament and tenacity to succeed in today's highly competitive and fast-changing world.

We encourage staff and students to pursue innovative interdisciplinary research, and we promote academic freedom and collegiality.

We are growing rapidly, constructing new research laboratories with state-of-the-art facilities, and strengthening links with industry and universities worldwide.

We sincerely look forward to welcoming you to Xi'an Jiaotong-Liverpool University.

**PROFESSOR YOUMIN XI**  
EXECUTIVE PRESIDENT  
XI'AN JIAOTONG-LIVERPOOL UNIVERSITY



# XI'AN JIAOTONG - LIVERPOOL UNIVERSITY

XJTU IS A PIONEERING, INTERNATIONAL JOINT VENTURE UNIVERSITY LOCATED IN THE CITY OF SUZHOU. THE UNIVERSITY IS PROUD OF ITS FOCUS ON RESEARCH-LED LEARNING INHERITED FROM ITS TWO PARENT INSTITUTIONS: THE UNIVERSITY OF LIVERPOOL, UK, AND XI'AN JIAOTONG UNIVERSITY, CHINA.





# XJTLU AT A GLANCE



## UK DEGREE FROM THE UNIVERSITY OF LIVERPOOL

Globally recognized master degree from the University of Liverpool, a member of the Russell Group of leading UK universities.



## AN EXCITING RANGE OF MASTERS PROGRAMMES

Study sciences, technology, engineering, mathematics, architecture, design and planning, language and culture, media and communications, business, finance or economics.



## ENGLISH-TAUGHT

All degrees are taught 100 percent in English. Summer preessional English courses and continuing support services are also available.



## WORLD-CLASS CAMPUS

State-of-the-art facilities located on a beautifully landscaped campus.



## GROWING GLOBAL COMMUNITY

Over 10,000 students and 500 academic staff from 50 countries...and counting!



## LEARN CHINESE FOR TOP CAREER PROSPECTS

The opportunity to study Chinese language at all levels. Bilingual China experts are highly sought-after in the global job market.



## SINO-BRITISH EXCELLENCE

Founded in 2006, XJTLU is the largest international collaborative university in China, combining the best of east and west.



## LOCATED IN SUZHOU, CHINA

China's equivalent of Silicon Valley, a hub of global business and innovation just 25 minutes from Shanghai, sits alongside stunning 2,500 year-old UNESCO World Heritage gardens.



## EXPERIENCE CHINA

With the Chinese century upon us, no matter what career you pursue, China will play a role in your future in one way or another. How can first-hand experience of China make the difference for you?

### CAREER PROSPECTS

Employers report that experience in China helps graduates stand out from the crowd. You'll develop an understanding of the world's second largest economy and inter-cultural skills that will give you a leg-up in your next job hunt.

### FRIENDSHIPS AND NETWORKS

Studying abroad is fun! Not only will you experience new people, food, customs and travel, but you'll make new friends in China and from across the globe that will last a lifetime.

### CULTURAL AWARENESS

China offers a continent full of diverse culture, food styles and dramatic scenery. Shanghai, Xi'an and Beijing are well within the range of a weekend trip. Spend more time and you can explore the Silk Road, traversing deserts, high plateau grasslands and glacial valleys. Or, visit giant pandas in Chengdu or Buddhist monks in Tibet. The possibilities are limitless!

### LANGUAGE SKILLS

More than one billion people of the world's population speak Chinese, and it will become increasingly influential in the future. Learning Chinese language may be a part of your study path at XJTLU, but even scratching the surface will give you a greater insight into a fascinating and ancient society that will also contribute to your career prospects.

## LIVE IN BEAUTIFUL SUZHOU

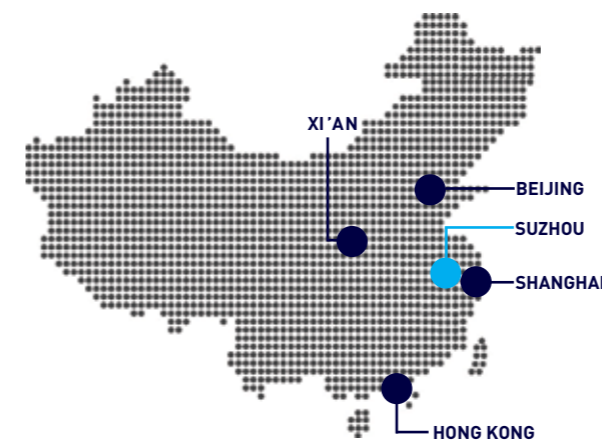
Suzhou is a fascinating mix of the ancient and the hypermodern; Blending together a bustling old town with canals, elegant 2,500 year-old UNESCO World Heritage gardens, new lakeside areas with stunning malls, skyscrapers, shops and restaurants; and one of Asia's leading research and innovation hubs. Suzhou's weather is cold in winter and hot in summer.

### XJTLU CAMPUS

XJTLU is located in the modern, clean and safe Suzhou Industrial Park area, China's equivalent of Silicon Valley and a hub of global education, business and innovation with more than 20 universities, 5,000 foreign owned enterprises and Fortune 500 companies to bring real-life opportunity into the classroom.

### SHANGHAI

Located just 25 minutes by bullet train from Suzhou, Shanghai is one of Asia's most glamorous cities with over 25 million people and one of the most vibrant economic, cultural and nightlife scenes in the world. Be a part of the action in this global hub of finance, arts, fashion and food.



### KEY FACTS

<b>LOCATION</b>	JIANGSU PROVINCE, EAST CHINA
<b>POPULATION</b>	11 MILLION
<b>GDP</b>	RMB 1.3 TRILLION (USD 190 BILLION)
<b>TIME ZONE</b>	GMT +8 HOURS
<b>WEATHER</b>	JAN (1-5 C) JULY (28-35 C)
<b>AIRPORTS</b>	SHANGHAI HONGQIAO (58 MILES) SHANGHAI PUDONG (145 MILES) WUXI SUNAN SHUOFANG (37 MILES)



"Suzhou is ideally located as a gateway for you to travel across China and Asia. The diversity of people at XJTLU gives you the opportunity to meet other like-minded students from around the world."

ANNA HALL, UK

## WHY XJTLU?

Xi'an Jiaotong-Liverpool University is a pioneering, international joint venture university. We are proud of our focus on research-led learning inherited from our two co-founding institutions: the University of Liverpool and Xi'an Jiaotong University.

### ENGLISH LANGUAGE ENVIRONMENT ON CAMPUS

All degree programmes are taught 100 percent in English, making it easy to access your China experience while continuing your course of study.

### MIX OF SUBJECTS ACROSS STEM, HUMANITIES AND SOCIAL SCIENCES

Study sciences, technology, engineering, mathematics, design and planning, architecture, public health, language and culture, China studies, business, finance, media and communications.

### WORLD-CLASS CAMPUS

State-of-the-art facilities are located on a beautifully landscaped campus.

### UK QUALITY ASSURANCE

XJTLU programmes are accredited and moderated by the University of Liverpool. With degree programmes across many subject areas, plus the China context, you're able to make the most of your academic experience abroad.

### GROWING GLOBAL COMMUNITY

Make friends from around the world; we have hundreds of international students from our population of 12,000 and more than 500 academic staff from 50 countries... and counting!

"I was so surprised to find how convenient it is to live in China! The people are kind, and the food is delicious. I was really impressed to see modern downtown areas even though Suzhou is also an ancient, historical city."

**PARK JAEHYUN, KOREA**

## ACADEMIC QUALITY AND PROFESSIONAL RECOGNITION

Many of our programmes have also been recognised by prestigious academic and professional accrediting bodies such as AACSB International, EQUIS, the Royal Institute of British Architects (RIBA), Joint Board of Moderators, Royal Society of Biology and the Institution of Engineering and Technology (IET), for example.

We are one of the youngest universities in the world to have earned these accreditations.





## RESEARCH-LED

A defining feature of a serious university is its ability to generate knowledge and to ensure that new insights are applied to the problems of society and passed down to future generations. Unsurprisingly, therefore, XJTLU places great emphasis on graduate teaching and research, which impact everything we do.

We recognise the importance of fundamental studies in generating important basic knowledge and spurring new ways of thinking. Equally, we carry out applied research, not least because it underpins long-term economic growth and social well-being, and make enormous efforts to pass knowledge on via our taught masters degrees.

Our international academic staff have been trained at globally distinguished universities and research institutes, and collectively bring an enormous range of expertise and innovative thinking to XJTLU.

To ensure that the University makes effective use of its talented staff, it has established a number of interdisciplinary research centres and institutes, focussing on topics ranging from biopharmaceutical science to design and from quantitative finance to urbanisation.

The resulting cross-fertilisation of ideas and skills promises to make the University an intellectually exciting place to conduct original research and to learn about the latest concepts in critical disciplines. XJTLU's postgraduate students are supported by excellent infrastructure such as state-of-the-art laboratory facilities and expert technical staff.

XJTLU is well-positioned to address key challenges of the 21st century.

If you choose masters study at XJTLU, you will be mentored by staff who are internationally respected experts in their fields. Similarly, our PhD supervisors will guide you through one of the most intellectually satisfying experiences of your life. PhD students will be supervised by an academic staff member from each university, and have the opportunity to study in the UK.

Upon successful completion of your masters or PhD programme, you will be awarded a degree from the University of Liverpool, a member of the Russell Group of leading universities in the UK.

### RESEARCH PRIORITIES

XJTLU aspires to be a leading research-led university that combines a strong international profile with an unwavering commitment to the economic and social development of Suzhou, Jiangsu Province and China. XJTLU has identified the following research themes that reflect the nature and capacity of our university and our commitment to inter-disciplinarity:

- Energy futures: social and technological choices
- Living in the digital age: human-computer interaction, design, social networks
- Finance, risk and hazard management
- Sustainable urbanisation
- Health technologies in society
- Emerging economies
- Diagnostic markers, therapeutic targets, and drug discovery
- Languages, communication and culture
- Nanotechnology and new materials.





# PhD STUDY

The XJTLU PhD programme is a strategic research collaboration between XJTLU and the University of Liverpool based at XJTLU. PhD opportunities are available in all our academic departments. Upon successful completion of your programme you will receive a degree from the University of Liverpool, which is recognised by the UK's Department of Education as well as China's Ministry of Education.

Students on this programme are formally registered with the University of Liverpool as off-site postgraduate research students. You will carry out research on XJTLU premises under the supervision of the supervisory team. As a PhD student you will be appointed a designated primary (local) supervisor at XJTLU, who is a full-time member of academic staff. In addition, you will also have a designated secondary supervisor based at the University of Liverpool.

The normal length of full-time PhD programme is three years. At the end of three years' full-time study, you can apply for an extension of one year to complete the writing of your dissertation. Part-time PhD degrees usually take four to seven years.

## KEY BENEFITS

The programmes equip you with a range of professional skills to help you maximise your future employability. Doctoral students also have dedicated travel budgets for participating in international conferences. The key benefits of studying at XJTLU include:

- Our PhD programme equips you with a range of professional skills to help you maximise your future employability
- Our supervisors will guide you through one of the most intellectually satisfying experiences of your life
- Supervision from respected academics at both XJTLU and the University of Liverpool
- PhD students have dedicated travel budgets for participating in international conferences generous scholarships and bursaries
- The chance to apply for a research visit to the University of Liverpool for up to three months
- Opportunities to work as a teaching assistant and develop crucial academic skills.



VISIT OUR WEBSITE FOR MORE INFORMATION ON PhD OPPORTUNITIES AVAILABLE:

[www.xjtlu.edu.cn/en/find-a-programme/?lev=doctoral](http://www.xjtlu.edu.cn/en/find-a-programme/?lev=doctoral)

## SCHOLARSHIPS

Specific funded PhD projects are available that have a scholarship covering the tuition fee and a monthly stipend. The scholarship for these projects is awarded based not only on your past academic record, but also on an assessment of your chosen topic and the likelihood of you completing a PhD in the time allocated.

For more information visit [www.xjtlu.edu.cn/en/study-with-us/scholarships](http://www.xjtlu.edu.cn/en/study-with-us/scholarships)



"My desire is to ignite and enable the passion for research in every member of staff and student by creating a favourable research environment at XJTLU. Together we will raise our international profile and impact, through our vision to become a research-led international, innovative, industry-linked, university of the future."

**PROFESSOR ENG GEE LIM**  
DEAN  
RESEARCH AND GRADUATE STUDIES

## ADDITIONAL LEARNING ACTIVITIES

Additional Learning Activity, or 'ALA', provides enrichment of both theoretical and experiential learning during your masters programme study at XJTLU. ALAs are non-credit and pass/fail. ALAs are prescribed for each programme including some activities that may be jointly developed with your academic advisor. 200 hours per semester are required to complete your masters degree.

### TYPICAL ALAs INCLUDE BUT ARE NOT LIMITED TO:

- Language study in Chinese, English, Spanish or another language
- Additional online and in-person modules on culture, business, technical skills or other topics that complement your primary study area
- Delivery of teaching as a graduate teaching assistant
- Engagement in a research project as a graduate research assistant
- Internship or private sector consulting project
- Professional and employment skills development
- Field trips
- Community engagement.

"The ALA requirement empowered me to customise my degree programme to my own interests. I've focused primarily on Chinese language which will be valuable for my future career. I also prepared and taught a seminar, and next semester I plan to do an internship that will support my masters degree thesis. One of my classmates worked in a financial company's sales department in Suzhou managing channel sales, conducting product and industry research and gaining valuable business and negotiation skills. I also attended a variety of courses on Chinese politics, culture and business. The possibilities are endless!"

**FRANZISKA BERTRAM**  
ALUMNA  
MSC MANAGEMENT



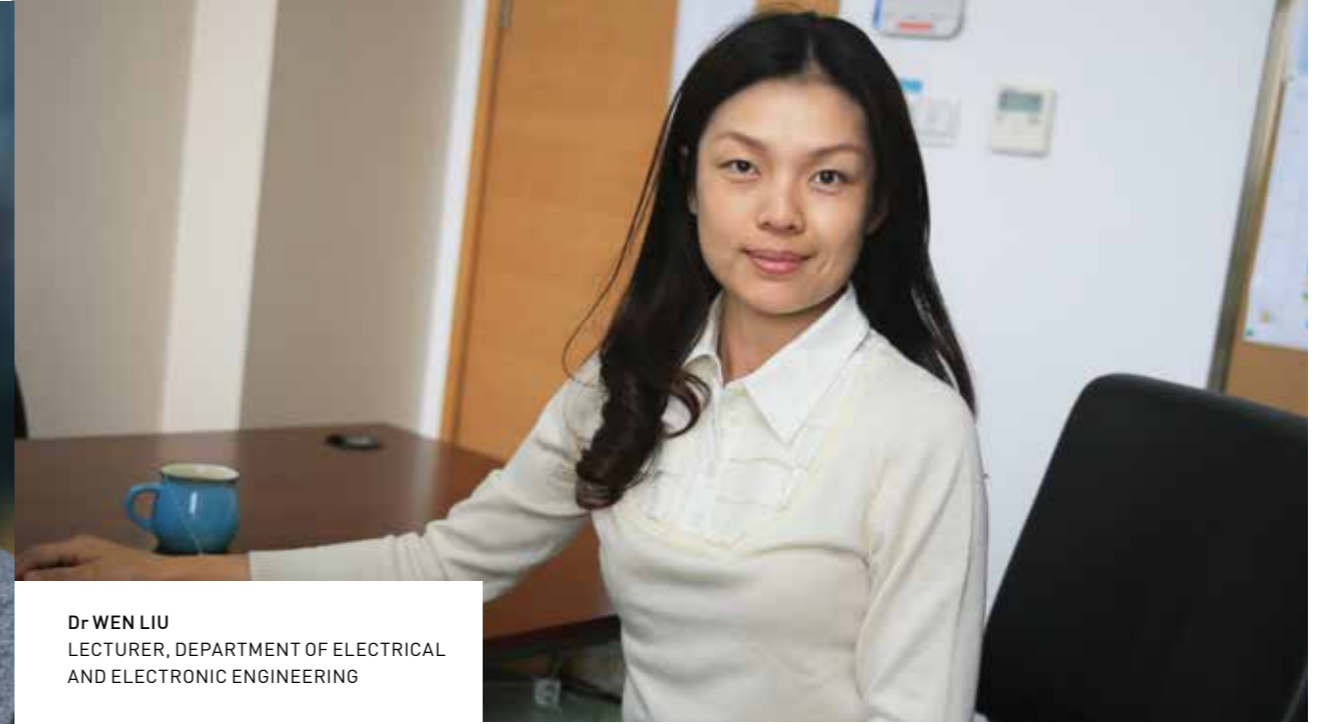


## ACADEMIC STAFF

XJTLU has over 500 academic staff from more than 50 countries and regions, who have extensive international experience in industry and academia. They deliver cutting-edge research and teach current theories to prepare you for an excellent career.



**Dr GRAHAM DAWSON**  
PROGRAMME DIRECTOR  
MRes ADVANCED CHEMICAL SCIENCES



**Dr WEN LIU**  
LECTURER, DEPARTMENT OF ELECTRICAL  
AND ELECTRONIC ENGINEERING



**PROFESSOR STUART PERRIN**  
DEAN, INTERNATIONAL AFFAIRS



**PROFESSOR GISELA LÖHLEIN**  
HEAD, DEPARTMENT OF  
ARCHITECTURE



**Dr NIMESH SALIKE**  
ASSOCIATE PROFESSOR  
INTERNATIONAL BUSINESS SCHOOL SUZHOU



**Dr KONSTANTINOS PAPADIKIS**  
HEAD, DEPARTMENT OF  
CIVIL ENGINEERING



**Dr LAURA SAVA**  
LECTURER, SCHOOL OF FILM  
AND TV ARTS



## CLUBS AND ACTIVITIES

An education at XJTLU brings with it not only outstanding academic opportunities, but also the chance to expand one's horizons socially and culturally.

XJTLU students study hard, but they also lead full and ambitious lives between classes. Student clubs and societies play an important role at XJTLU with more than 120 organisations centred on art, sports, entrepreneurship, social service, academia and science to name but a few.

XJTLU hosts a model United Nations, and the Student Union plays an active role in shaping campus life and academic experiences. We also have an arts centre that gives students the opportunity to get involved in a range of creative activities. The campus has its own student enterprise park where students can try starting their own businesses or simply enjoy the shops and services.

You'll also have the chance to travel through China's vast and beautiful landscape and experience the depth of its ancient culture.



SCAN TO FIND OUT MORE ABOUT LIFE AT XJTLU

[www.xjtlu.edu.cn/en/life-at-xjtlu](http://www.xjtlu.edu.cn/en/life-at-xjtlu)

### SELECTION OF STUDENT CLUBS AND ACTIVITIES

ACTION! GREENER
ART TRAINING CENTRE
BILLIARDS CLUB
BIOSCIENCE CLUB
BUDDY PROGRAMME
COMMUNICATION SOCIETY
CRICKET CLUB
DEBATING CLUB
HISTORY CLUB
KARATE CLUB
LEMEI CHARITY
LOX-TV
MODEL UNITED NATIONS
STUDENT UNION
SCIENCE & INNOVATION ASSOCIATION
STUDENT AMBASSADOR ASSOCIATION
STUDENT ENGLISH ASSOCIATION
STUDENT NEWS CENTRE
VOLUNTEER ASSOCIATION
ULTIMATE FRISBEE CLUB

### SPORTS FACILITIES

RUNNING TRACKS
TENNIS COURTS
BASKETBALL COURTS
FOOTBALL FIELDS
INDOOR GOLF PRACTICE
50M SWIMMING POOL
SPORTS HALL
FITNESS AND WEIGHTS
ROCK CLIMBING WALL
DANCE AND YOGA STUDIOS

### FOOD AND SHOPPING

CANTEENS AND COFFEE SHOPS
BARS AND RESTAURANTS
DOWNTOWN SUZHOU





## AWARD-WINNING CAMPUS

The XJTLU campus provides state-of-the-art teaching, laboratory, research and support facilities.

This includes the award-winning Central Building, which houses the fully-resourced XJTLU Library.

In addition to the world-class science and engineering laboratories, design and media studios, and communications laboratories, our campus also has conference facilities, tennis and basketball courts, a sports field and track, and a variety of catering facilities.



XJTLU NORTH CAMPUS



XJTLU SOUTH CAMPUS



XJTLU LIBRARY



## ACCOMMODATION

Accommodation is normally in private single en-suite rooms, three- four- or six-bedroom apartments, providing you with home-like facilities.

All accommodation is within 10-15 minutes' walk of the XJTLU campus, with grocery shops, cafes and restaurants located nearby.

The XJTLU Global office will book your accommodation and support your check-in after you arrive.



### ESTIMATED COSTS

	RMB	USD
RENT (PER YEAR)	16,300-31,000	2,500 to 4,600
ONE MONTH ELECTRICITY	100-200	15-30
ONE MONTH WATER	50	7.5
ONE MONTH MOBILE PHONE BILLS	100	15
ONE-WAY BUS TICKET IN SUZHOU	1-2	0.15-0.3
ONE-WAY SUBWAY TICKET IN SUZHOU	2	0.3
TRAIN TICKET TO SHANGHAI	30	4.5
BUS TO PUDONG AIRPORT (SHANGHAI)	88	13.5
TAXI TO PUDONG AIRPORT (SHANGHAI)	350	52.5
TAXI IN SUZHOU (OLD TOWN/NEW TOWN)	11-50	1.6-7.5
BOTTLE OF WATER	2	0.3
CAFETERIA LUNCH	15	2.3
BOTTLE OF BEER (LOCAL)	3	0.5
CUP OF COFFEE	10-30	0.6-4.5
FAST FOOD MEAL	25	4
CINEMA TICKET	20-100	3-16
SWIMMING POOL ACCESS	10-15	1.5-2.3
NIGHT OUT (CLUB/BAR)	250-500	37.5-75
HAIRCUT	40-200	6-30



## INTERNATIONAL STUDENT SUPPORT

The XJTLU Global team provides a range of services to help make your experience at XJTLU go as smoothly as possible. XJTLU Global is the first service point for all international and Hong Kong, Macao and Taiwan students at the University.

### VISA AND ACCOMMODATION

XJTLU Global will provide support for arranging your visa and accommodation. See [www.xjtlu.edu.cn/en/study-with-us/admissions/visas](http://www.xjtlu.edu.cn/en/study-with-us/admissions/visas) and [www.xjtlu.edu.cn/en/life-at-xjtlu/accommodation](http://www.xjtlu.edu.cn/en/life-at-xjtlu/accommodation) for more information.

### AIRPORT MEET-AND-GREET

XJTLU Global organises a pick-up service for all new international students arriving in China at Shanghai Pudong airport. This service is available during three days of welcome week.

### INDUCTION

The induction activities aim to familiarise you with the local area and campus. You will have the opportunity to meet current students during this time, as well as at various social events and societies and clubs introductions.

### ENGLISH LANGUAGE SUPPORT

The Language Centre provides continuing support courses to help you with any English language and study skills issues you may find during your studies. Continuing support focuses on academic literacies, study skills, and learning techniques, helping you to bridge the gap between English study and academic subject-specific study.

### CHINESE CLASSES

The Language Centre also provides free Chinese language classes to all full-time international students delivered by our globally recognised Language Centre.

### CAREER SERVICES

The Career Development Office provides students with support in preparing for successful future careers and assists with work placements and job searches. Their services include lectures and seminars, CV and cover letter advice, workshops on interview techniques, business plans, and career planning. The office also arranges external mentoring with industry professionals as well as maintaining a careers library with books and journals on career planning, together with IT resources to help you with your post-graduation job search.

### ALUMNI

When you graduate from XJTLU, you will not only join a growing network of XJTLU alumni, but you will also become a member of the global community of more than 100,000 University of Liverpool alumni in over 130 countries.

"Life at XJTLU is truly amazing. With extremely warm and friendly staff as well as the locals, it's not hard to absolutely love what this university and this city has to offer. Life has never been this good."

**SUHAILA SULEIMAN**  
STUDENT  
BEng TELECOMMUNICATIONS  
ENGINEERING



"China is amazing! I feel the people are so welcoming and the atmosphere is definitely more relaxed than the UK. As a minority, you instantly develop a fan base, so bring your good side as there will be lots of pictures!"

**KRYSTINA MHLANDHLA, UK**

SCAN TO FIND OUT MORE  
ABOUT STUDENT SUPPORT  
[www.xjtlu.edu.cn/en/study-with-us/why-xjtlu/support-and-advice](http://www.xjtlu.edu.cn/en/study-with-us/why-xjtlu/support-and-advice)





## CAREERS AND EMPLOYABILITY

XJTLU students have numerous job opportunities around the world after they graduate.

XJTLU graduates work at institutions and enterprises including the 'Big Four' accounting and consulting firms, foreign-owned banks, financial institutions, foreign-owned manufacturing and developing firms, and large and medium-sized state-owned enterprises.

We are located in Suzhou Industrial Park, which houses more than 5,000 international enterprises and Fortune 500 companies.

Here are some of the companies where our graduates have received offers of employment.

### INTERNATIONAL COMPANIES

Microsoft  
 Google  
 Apple  
 Intel  
 Amazon  
 Ford  
 JP Morgan Chase  
 IBM  
 Shell  
 Henkel  
 Singapore Grid  
 Swiss Bank  
 Royal Bank of Scotland  
 Citibank  
 Maple Leaf Bank of Canada  
 Bosch Automotive  
 Accenture  
 Grundfos Pumps  
 Lou's Electronics  
 Caterpillar  
 Rogers Technology  
 Secker Medical Devices  
 Chaowei Semiconductor  
 Honeywell  
 Procter & Gamble  
 L'Oréal

### FINANCIAL SECTOR

HSBC  
 Standard Chartered Bank  
 Sumitomo Mitsui Banking Corporation  
 Lloyd Bank Group  
 CITIC Securities  
 CITIC Trust  
 Everbright Securities  
 Pacific Insurance  
 China Gold  
 China Ping An  
 CDB  
 China Agriculture and Industry  
 Construction Bank

### "BIG 4" CONSULTING COMPANIES

PricewaterhouseCoopers  
 KPMG  
 Ernst & Young  
 Deloitte

### CHINESE COMPANIES

Sina  
 Lenovo  
 State Grid  
 Huawei  
 ZTE  
 China Telecom  
 China Mobile  
 PetroChina  
 Baidu  
 Alibaba  
 Jingdong  
 China Overseas Real Estate  
 Shanghai Electric Power Design Institute  
 Tongcheng.com  
 SAIC  
 China Resources Vanguard  
 Soochow University

### ENTREPRENEURSHIP

Among those who start work immediately upon graduation, some students choose to start their own company and the University encourages such actions. With guidance from the Career Development Office, many students take advantage of XJTLU Student Enterprise Park to develop their own products and start-up companies.

### THE XJTLU INNOVATION HUB

The Innovation Hub provides a collaborative ecosystem of innovative programmes and partnerships that drives economic and entrepreneurial development among the XJTLU student and staff and the broader community. The hub organises conferences, competitions and events, undertakes research, consulting and funding, and provides mentoring, advice and support. We aim to be the leading university incubator of startups in China.

### EXTERNAL MENTOR PROGRAMME

We invite experienced professionals from various companies to act as external mentors who provide guidance on the various skills that are necessary for your future career.





## ALUMNI

When you graduate from XJTLU, you will not only join a growing network of XJTLU alumni, but you will also become a member of the global community of more than 100,000 University of Liverpool alumni in over 130 countries.

Our English language UK degree, high-quality research and connections with industry offer graduates an exceptionally wide range of opportunities. XJTLU graduates are proving very successful in finding desirable positions across different industries.

You can also take advantage of a range of opportunities for personal and professional development such as free access to the University of Liverpool's vast library resources and discounts on many management journals and databases. You will be able to participate in both University of Liverpool and XJTLU alumni events including social networking gatherings and online professional development webinars.

XJTLU alumni also have access to networks in Beijing, Shanghai, Guangdong and Hong Kong, Jiangsu, Xi'an, the United Kingdom, Singapore, America, Canada and Australia.

Visit [www.xjtlu.edu.cn/en/alumni/](http://www.xjtlu.edu.cn/en/alumni/) for more information.

**AS AN XJTLU GRADUATE YOU CAN TAKE ADVANTAGE OF A RANGE OF OPPORTUNITIES FOR PERSONAL AND PROFESSIONAL DEVELOPMENT SUCH AS FREE ACCESS TO THE UNIVERSITY OF LIVERPOOL'S VAST LIBRARY RESOURCES AND DISCOUNTS ON MANY MANAGEMENT JOURNALS AND DATABASES.**





# ADMISSION TO XJTU





## HOW TO APPLY

### ENTRY REQUIREMENTS

The minimum entry requirement is a UK upper second class (2:1) or equivalent. However, admission requirements vary depending on the programme you choose. Please see our website or refer to pages 10-15 for details.

### ENGLISH LANGUAGE REQUIREMENTS

Masters or PhD students at XJTLU should have a high level of proficiency in the English language. Non-native speakers will typically require a minimum IELTS score of 6.0 (TOEFL iBT:80) up to IELTS 7.0 (TOEFL iBT: 100). Students who completed a full-time degree programme delivered wholly in English will normally be exempt from the English language requirements. If you miss the language requirements by 0.5-1.0 of IELTS then you can still apply for XJTLU by successfully completing a summer preessional English course at the University.

### APPLY ONLINE

All applicants should apply via our online application system. To begin, simply choose your programme on our website and click the “apply” button. You will then be prompted to create an account, complete the application form, upload the required documents and submit. You may save and re-log in to your application form at any time and upload any remaining supporting documents.

### THE CLOSING DATE FOR

**SEPTEMBER 2019 INTAKE IS**

**30 JUNE 2019 (INTERNATIONAL)**

**15 JULY 2019 (MAINLAND CHINA)**

### CHECKLIST

- Certificates of education qualifications and transcripts
- Certificates of English language qualification (If applicable)
- Personal Statement
- Two letters of reference
- Scholarship application letter (Optional)



### TUITION FEES

Tuition fees vary by programme and range from RMB 90,000-260,000 (see pages 10-15 or visit our website). You must secure your place at XJTLU by paying a non-refundable deposit of RMB 10,000, which is deducted from the total tuition fee. Tuition fee payments can be made in instalments.

### SCHOLARSHIPS

XJTLU offers a generous tuition fee scholarship of up to 50 percent for full-time programmes, based on academic merit. If you wish to be considered for XJTLU masters scholarships please refer to the website for details.

### ALUMNI DISCOUNT

Graduates of XJTLU, the University of Liverpool or Xi'an Jiaotong University will automatically receive a tuition fee discount of 20 percent.

Applications will be considered as they are received and we encourage you to submit your application well in advance of the deadline. Please refer to the relevant programme page on our website for details. PhD applications may be submitted at any time.

Note: The University reserves the right to modify programmes at any time in response to unforeseen circumstances, feedback and review. The University also reserves the right to not offer programmes with low enrolments. For the latest information, please visit our website.





THE PRESESSIONAL COURSE IS A GREAT WAY TO BEGIN YOUR POSTGRADUATE STUDIES AND MANY STUDENTS CHOOSE TO ENROLL EVEN IF THEY HAVE MET THE LANGUAGE REQUIREMENTS. WE ADVISE YOU TO REGISTER EARLY FOR THIS POPULAR COURSE.



#### FOUR-WEEK COURSE

##### WEEK 1

EDUCATION AND CULTURE  
INTRODUCTION TO ACADEMIC ENGLISH  
WRITING AND FINDING SOURCES

##### WEEK 2

INTELLECTUAL PROPERTY  
USING SOURCES IN WRITING  
CRITICAL READING AND WRITING

##### WEEK 3

RESEARCHING YOUR PROGRAMME  
INTERACTING IN SEMINARS  
REVISING YOUR WORK

##### WEEK 4

DISCIPLINE-SPECIFIC TOPIC  
WRITING ESSAYS AND REPORTS  
ASSESSMENTS

#### SIX-WEEK COURSE

##### WEEK 1

PREPARING FOR AN ENGLISH UNIVERSITY  
BUILDING GRAMMAR/VOCABULARY  
EXPANDING WRITING

##### WEEK 2

STUDY SKILLS FOR PG STUDY  
WRITING ESSAYS AND REPORTS  
PRESENTATIONS AND GROUP WORK

##### WEEK 3

EDUCATION AND CULTURE  
INTRODUCTION TO ACADEMIC ENGLISH  
WRITING AND FINDING SOURCES

##### WEEK 4

INTELLECTUAL PROPERTY  
USING SOURCES IN WRITING  
CRITICAL READING AND WRITING

##### WEEK 5

RESEARCHING YOUR PROGRAMME  
INTERACTING IN SEMINARS  
REVISING YOUR WORK

##### WEEK 6

DISCIPLINE-SPECIFIC TOPIC  
WRITING ESSAYS AND REPORTS  
ASSESSMENTS

## PRE-SESSIONAL ENGLISH (PSE) COURSE

The XJTLU Pre-sessional English (PSE) course are designed to develop the English language and academic study skills necessary to meet the challenges of studying at masters level. These include academic writing, general listening and speaking, research, critical evaluation and writing for specific audiences.

#### ABOUT THE COURSES

The courses run for five to eight weeks and are comprised of approximately 100 or 150 hours of teaching and 50 or 75 hours of self-study.

#### WHO SHOULD TAKE PSE?

If you miss the language requirements by 0.5-1.0 of IELTS (or equivalent) then you can change your offer to “unconditional” by taking PSE. Students who complete PSE will not need to retake IELTS or TOEFL.

#### TUITION FEES

Five-week course – RMB 15,000

Eight-week course – RMB 23,000

Students who pay their PSE fee and deposit by 31 May 2019 will receive a 20 percent discount of their PSE fee

#### PRELIMINARY SCHEDULE

Five-week course - 29 July to 30 August 2019

(welcome day 26 July 2019)

Eight-week course - 8 July to 30 August 2019

(welcome day 5 July 2019)



#### HOW TO APPLY

APPLICATIONS ARE ACCEPTED ONLINE.

PLEASE CHECK THE WEBSITE FOR DETAILS:

[www.xjtlu.edu.cn/en/  
find-a-programme/?lev=othercourses](http://www.xjtlu.edu.cn/en/find-a-programme/?lev=othercourses)



## DEGREE PROGRAMMES

### MASTERS

XJTLU currently has programmes in the areas of engineering, science, architecture and design, mathematics, business, management, language, communication and culture.

Our masters degrees (awarded by the University of Liverpool, UK) equip you with the skills and knowledge to pursue your career in a relevant field, or

conduct pioneering research in an academic or industrial setting. All degrees are taught in English by world-class international academic staff and industry experts.

Programme length ranges from 18 months (full time) to 36 months (part time). Tuition fees vary by programme and generous scholarships are available. See our website for details.



SCAN TO VIEW ALL OF  
OUR DEGREE PROGRAMMES  
[www.xjtlu.edu.cn/en/find-a-programme/?lev=masters](http://www.xjtlu.edu.cn/en/find-a-programme/?lev=masters)





PROGRAMME	DURATION	TUITION FEES	ENTRY REQUIREMENTS
● <b>MASTER OF ARCHITECTURAL DESIGN</b> P49	24 months (full-time)	RMB 160,000	An undergraduate degree (UK 2:1 or equivalent) in BArch, BEng in Architecture, BA (Hons) in Architecture or equivalent. Applicants are required to submit a portfolio of their own creative works as a student and a practicing architect/intern (indicating where and when the work was done, who the tutor/supervisor was, who was part of the team and what the applicants' role was in the team, A3-size, typically 10 to 30 pages, in PDF format). An internship in an architecture-related practice is recommended, but not required. We might accept applicants with substantial work experience or an outstanding portfolio even if their grades are lower than the minimum entry requirements.
■ <b>MRES MOLECULAR BIOSCIENCE</b> P53	18 months (full-time)	RMB 90,000	An undergraduate degree (UK 2:1 or equivalent) in a life science-related discipline.
■ <b>MRES ADVANCED CHEMICAL SCIENCES</b> P57	18 months (full-time)	RMB 90,000	An undergraduate degree (UK 2:1 or equivalent) in chemistry or a related discipline.
◆ <b>MA CHINA STUDIES</b> P61	18 months (full-time)	RMB 90,000	An undergraduate degree (UK 2:1 or equivalent) in any discipline.
● <b>MSC CIVIL ENGINEERING</b> P65	18 months (full-time), 36 months (part-time)	RMB 90,000	An undergraduate degree (UK 2:1 or equivalent) in a relevant field such as civil engineering or a related programme.
● <b>MSC SUSTAINABLE CONSTRUCTION</b> P67	18 months (full-time), 36 months (part-time)	RMB 90,000	An undergraduate degree (UK 2:1 or equivalent) in a relevant field such as civil engineering or a related programme.
■ <b>MSC APPLIED INFORMATICS</b> P71	18 months (full-time)	RMB 90,000	An undergraduate degree (UK 2:1 or equivalent) in information and computing science, information and management systems, or related fields such as engineering or finance.

PROGRAMME	DURATION	TUITION FEES	ENTRY REQUIREMENTS
● <b>MRES COMPUTER SCIENCE</b> P73	18 months (full-time)	RMB 90,000	An undergraduate degree (UK 2:1 or equivalent) in a computer science-related discipline with suitable programming and programme design experience.
■ <b>MSC SOCIAL COMPUTING</b> P75	18 months (full-time)	RMB 90,000	An undergraduate degree (UK 2:1 or equivalent) in computer science, engineering, information systems, e-business, or mathematics, with suitable programming and programme design experience.
■ <b>MSC FINANCIAL COMPUTING</b> P77	18 months (full-time)	RMB 90,000	An undergraduate degree (UK 2:1 or equivalent) in a relevant area such as computer science, finance and investment, information systems, e-business and mathematics, with some programming and program design experience.
■ <b>MRES LOW CARBON ELECTRICAL POWER AND ENERGY TECHNOLOGY</b> P81	18 months (full-time)	RMB 90,000	An undergraduate degree (UK 2:1 or equivalent) in a relevant field, such as: electrical engineering, electronic science and technology, telecommunication engineering, computer science and technology, mathematics, semiconductor physics, automation and control, embedded systems, thermal physics, and other related majors.
■ <b>MSC MULTIMEDIA TELECOMMUNICATIONS</b> P83	18 months (full-time)	RMB 90,000	An undergraduate degree (UK 2:1 or equivalent) in a relevant field such as telecommunication engineering, electronic science and technology, electrical engineering, and computer science and technology.
■ <b>MSC SUSTAINABLE ENERGY TECHNOLOGY</b> P85	18 months (full-time)	RMB 90,000	An undergraduate degree (UK 2:1 or equivalent) in a relevant field such as electrical engineering, electronic science and technology, telecommunication engineering, computer science and technology, mathematics, semiconductor physics, automation and control, embedded systems, engineering thermal physics or other related disciplines.



PROGRAMME	DURATION	TUITION FEES	ENTRY REQUIREMENTS
★ <b>MA MASS MEDIA TRANSLATION</b> P89	18 months (full-time), 30 months (part-time)	RMB 90,000	A first degree (UK 2:1 or equivalent) in translation, or English (where Chinese is your first language) or Chinese (where English is your first language). Applicants with a first degree in other subjects will be considered on an individual basis.
▲ <b>MA TESOL</b> P91	18 months (full-time), 30 months (part-time)	RMB 90,000	An undergraduate degree (UK 2:1 or equivalent) in a relevant field such as English, linguistics, or education and literature. No teaching experience is required, but some relevant teaching experience at secondary or tertiary level would be an advantage.
▲ <b>MSC MEDIA AND COMMUNICATION</b> P95	18 months (full-time), 30 months (part-time)	RMB 90,000	An undergraduate degree (UK 2:1 or equivalent) in communication, media, English with media or similar. No practical experience is required, but some relevant media practice/background would be an advantage.
● <b>MDES INDUSTRIAL DESIGN</b> P99	18 months (full-time), 30 months (part-time)	RMB 90,000	An undergraduate degree in industrial design, engineering, architecture, urban planning and design, or other design-related discipline.
● <b>MSC FINANCIAL MATHEMATICS</b> P103	18 months (full-time)	RMB 90,000	An undergraduate degree (UK 2:1 or equivalent) in a relevant field, such as mathematics, statistics, physics, engineering, computer science, finance and economics.
● <b>MSC URBAN PLANNING (SPECIALISATION IN URBAN DESIGN)</b> P107	18 months (full-time), 30 months (part-time)	RMB 90,000	An undergraduate degree (UK 2:1 or equivalent) in industrial design, engineering, architecture, urban planning and design, or another design-related discipline.

PROGRAMME	DURATION	TUITION FEES	ENTRY REQUIREMENTS
● <b>MSC URBAN PLANNING</b> P109	18 months (full-time)	RMB 90,000	An undergraduate degree (UK 2:1 or equivalent) in a relevant field, such as urban planning and design, architecture, geography, economics, management, environmental science, social or public policy.
▲ <b>MA GLOBAL EDUCATION</b> P113	18 months (full-time), 30 months (part-time)	RMB 90,000	An undergraduate degree (UK 2:1 or equivalent). Some work experience in education would be an advantage. <b>Note:</b> This programme is subject to final validation from the University of Liverpool, and awaiting official recognition from the Ministry of Education of the People's Republic of China.
● <b>MSC BUSINESS ANALYTICS</b> P117	18 months (full-time)	RMB 120,000	An undergraduate degree (UK 2:1 or equivalent) in economics, management, finance, marketing, science or engineering. Prior knowledge of econometrics is desirable, but not essential.
● <b>MSC ECONOMICS AND FINANCE</b> P119	18 months (full-time)	RMB 120,000	An undergraduate degree (UK 2:1 or equivalent) in finance, accounting, economics, management, science or engineering and some understanding of quantitative methods, statistics or econometrics.
● <b>MSC FINANCE</b> P121	18 months (full-time)	RMB 120,000	An undergraduate degree (UK 2:1 or equivalent) in finance, accounting, economics, management, science or engineering and some understanding of quantitative methods, statistics or econometrics.
● <b>MSC INTERNATIONAL FINANCIAL MANAGEMENT</b> P123	18 months (full-time)	RMB 120,000	Applicants should be numerate and have some background knowledge and understanding in quantitative methods and statistics. Generally, applicants with a bachelor's degree in science, technology, engineering or mathematics, and applicants from Tier 1 Chinese universities, will be considered to have sufficient skills. Applicants from other disciplines will need to demonstrate numeracy skills and the ability to undertake mathematical work.



PROGRAMME	DURATION	TUITION FEES	ENTRY REQUIREMENTS
● <b>MSC INVESTMENT MANAGEMENT</b> P125	18 months (full-time)	RMB 120,000	An undergraduate degree (UK 2:1 or equivalent) in mathematics, finance, or a related subject. Or relevant work experience and a good knowledge of quantitative methods, statistics or financial mathematics.
● <b>MRES MANAGEMENT</b> P127	18 months (full-time)	RMB 120,000	An undergraduate degree (UK 2:1 or equivalent) finance, accounting, economics, management, science or engineering.
● <b>MSC MANAGEMENT</b> P129	18 months (full-time)	RMB 120,000	An undergraduate degree (UK 2:1 or equivalent) in any discipline.
● <b>MSC OPERATIONS AND SUPPLY CHAIN MANAGEMENT</b> P131	18 months (full-time), 36 months (part-time)	RMB 120,000	An undergraduate degree (UK 2:1 or equivalent) in any discipline.
● <b>MSC PROFESSIONAL ACCOUNTING</b> P133	18 months (full-time)	RMB 140,000	An undergraduate degree (UK 2:1 or equivalent) in accounting. It is essential to have passed at least four ICAEW Certificate Level (CFAB) papers on entry. Equivalent degrees or papers are also acceptable if qualified as Credit for Prior Learning by ICAEW or ACCA. Students who have not completed CFAB will need to do so prior to seeking full membership of the ICAEW. Applicants who do not have an equivalent UK degree in Accounting will also be considered if they have completed the six ICAEW Certificate Level (CFAB) papers or equivalent. Applicants with a professional background rather than a degree need to demonstrate relevant training record and working experience in an accounting and finance environment. Such applications will be assessed on a case-by-case basis and are subject to approval by XJTLU Academic Affairs.

PROGRAMME	DURATION	TUITION FEES	ENTRY REQUIREMENTS
● <b>MSC PROJECT MANAGEMENT</b> P135	18 months (full-time), 30 months (part-time)	RMB 120,000	An undergraduate degree (UK 2:1 or equivalent) in any discipline.
● <b>INTERNATIONAL MBA</b> P137	24 months (part-time)	RMB 260,000	The ideal candidate is a manager with eight years' work experience, some of which should be in a managerial position, and an undergraduate degree (UK 2:1 or equivalent) in any discipline.

#### ENGLISH REQUIREMENTS

- IELTS: 6.0 (minimum of 5.0 in all sections) / TOEFL iBT:80
- IELTS: 6.5 (minimum of 5.5 in all sections) / TOEFL iBT:90, minimum of 21 in any skill
- ▲ IELTS: 7.0 (minimum of 6.0 in all sections) / TOEFL iBT:100, minimum of 21 in any skill
- ★ IELTS: 7.0 (minimum of 6.5 in all sections) / TOEFL iBT:100, minimum of 21 in any skill
- ◆ IELTS: 7.0 (minimum of 7.0 in all sections) / TOEFL iBT:100, minimum of 21 in any skill

#### MINIMUM ENTRY REQUIREMENTS

UK: 2:1 or equivalent

China: Overall weighted average 75-85%, depending on the institution.

North America: GPA 3.0 out of 4 or 3.2 in the final two years of UG study



# DEPARTMENT OF ARCHITECTURE

Modern China presents a wealth of exciting opportunities for architecture students.

Against the backdrop of the country's fast-paced modernisation, the Department of Architecture engages with the challenges and contradictions of architecture in China in an open-minded and forward-thinking manner. Our students benefit from the experiences of our highly international academic staff, and seek answers to the questions facing both local and international architecture today.

As academics and architects we involve ourselves in real debates, challenge common perceptions and evaluate traditions. Our unique location in Suzhou allows in-depth explorations of the dynamics of urban life and designed spaces. Confronted with the city's past and engaged in its present, our students are guided to design the future.

## RETHINKING ARCHITECTURE

China's complexity means that critical thinking and creative engagement are not just buzzwords at XJTLU: they have real meaning. In Architecture we foster debate, challenge perceptions and ask provocative questions in order to develop architectural solutions for contemporary problems.

With China as our architectural workshop, we investigate new styles, study unexplored urban dynamics and examine city formation. We use the local context as a driver to make the theoretical real, pushing us well beyond the limits of the studio.

## RIBA VALIDATION

We have achieved part 1 validation from the Royal Institute of British Architects (RIBA) for our undergraduate programme, and we have started the process of gaining international validation at RIBA part 2 level for our masters programme. We are also seeking professional accreditation from the Ministry of Construction in China; the programme is already registered with and recognised by the Chinese Ministry of Education.

## ACADEMIC STAFF

Our academic staff have a highly diverse range of teaching and research experience as well as international cultural, educational and professional backgrounds. Additionally, the department maintains close ties with its partner department, the School of Architecture at the University of Liverpool, with staff on both sides engaged in regular exchanges.

## FACILITIES

The facilities include ample studio space and computer labs. Workshop facilities available include woodworking, model-making, laser cutting, 2D and 3D printing, photography and CNC production. There is also a building materials library and an arts and model-making supplies shop.

## STUDIO IS CENTRAL

Our design studio is central to our teaching practices which encourage critical enquiry in the form of analysis, reflection and speculation. Learning-by-doing and learning-by-thinking lie at the core of our curriculum with 50 percent of teaching and learning time devoted to architectural studios. Studio teaching is provided in small groups of 10 to 12 students per tutor on the basis of structured briefs. Through individual projects, you are led through the learning experience, which spans from media exploration and space creation in the earlier stages of your studies, to complex architectural expression and proposition at the end of your degree.

## KEY EDUCATIONAL FEATURES OF ARCHITECTURE INCLUDE:

- Human-centred development of the built environment
- A culture of intellectual exploration and innovative speculation
- Cross-cultural education that fosters creative, critical, sophisticated and responsible thought
- Creation of desirable places to live, work and enjoy

# MASTER OF ARCHITECTURAL DESIGN

## MASTER OF ARCHITECTURAL DESIGN

The Master of Architectural Design programme prepares students for an international career in architecture, creating bridges between Eastern and Western culture. Understanding mobility, creative leadership, as well as advanced technical skills as key professional abilities in a rapidly globalising world, the programme attracts international students preparing for a career related to China, as well as domestic students preparing for both national and international careers. The programme includes architectural design studios as well as humanistic and technical modules. A student-centred learning environment offers rich opportunities, design-driven research and individual experimental enquiry to foster students' conceptual design skills as well as research and writing skills in preparation for both professional practice and PhD-level studies. Graduates of the programme are well-rounded, creatively confident and technically skilled professionals ready to create a global future.

Students graduating from the programme qualify for RIBA (Royal Institute of British Architects) Part 2 validation, which is the second out of three stages in the formal educational process required to register as a professional architect in the United Kingdom.

The programme offers an international perspective, while at the same time enabling students to address the demands and opportunities of a rapidly urbanising China. Graduates from this programme receive an international Master of Architectural Design degree from the University of Liverpool that is recognised by the Chinese Ministry of Education.

### DISTINCTIVE FEATURES

This is the first and only postgraduate architecture course in mainland China validated by the Royal Institute of British Architects (RIBA) for the RIBA Part 2. It is an English-taught, 2-year, full-time professional programme.

As China experiences unprecedented transformations as well as increasing professional, industrial and academic collaboration with international partners, this programme educates the next generation of forward-looking global

architects who have the necessary cross-cultural awareness, social and environmental responsibility, creative and critical capability, technical competence and professional attitude to enable and to define ongoing and future transformations in the building environment, domestically and internationally. Emphasising and engaging with the local Chinese context while maintaining an international perspective, the programme is oriented towards the highest international standards and it attracts both domestic and international students and academic staff.

Design studios are the core of the programme, taking advantage of ongoing research in the department and the specific needs of the profession within China and across the world. Design studios are often taught with involvement of design practitioners from local and international firms and typically address themes such as:

- Innovative approaches to urban development and regeneration
- New high-rise building typologies for sustainable living
- Advanced digital design and fabrication
- Architectural theory and criticism
- Individually defined themes addressing contemporary social and cultural issues

### KNOWLEDGE AND SKILLS

The Master of Architectural Design programme enables students to develop architectural design projects at an advanced level, including the creative, technical, and research skills needed, and educate you in the areas of theory, history, and criticism of architecture. Key knowledge and skills include:

- the ability to generate complex design proposals showing understanding of current architectural issues, originality in the application of subject knowledge and, where appropriate, to test new hypotheses and pursue creative experiments
- competence in a comprehensive range of visual, oral and written media to test, analyse, critically appraise and explain design proposals
- the ability to creatively evaluate materials, processes and techniques that apply to complex architectural designs and building construction, and to integrate these into practicable design proposals
- critical understanding of how knowledge is advanced through research to produce clear, logically argued and original written work relating to architectural culture, theory and design
- understanding of the context of the architecture and the construction industry, including the architect's role in the processes of procurement and building production, and legislation
- problem solving skills, professional judgement, and the ability to take the initiative and make appropriate decisions in complex and unpredictable circumstances.

### MODULES

#### YEAR ONE

##### DESIGN STUDIO I

APPLIED TECHNOLOGY IN ARCHITECTURE

ARCHITECTURAL THEORY AND CRITICISM

##### DESIGN STUDIO II

ADVANCED PROFESSIONAL PRACTICE

TOPICS IN ARCHITECTURAL HISTORY

#### YEAR TWO

##### DESIGN STUDIO III (INDIVIDUAL BRIEFS)

ARCHITECTURAL DESIGN AND RESEARCH METHODS

PRACTICE BASED ENQUIRY AND ARCHITECTURAL REPRESENTATION

DESIGN STUDIO IV (THESIS PROJECT, INDIVIDUAL BRIEFS)

THESIS (DISSERTATION)

### CAREERS

This programme provides you with an appropriate foundation for employment in the architectural profession at an advanced level. It also provides the basis for enrolment in a PhD research degree. Our graduates are appreciated for their unique skill set and find excellent opportunities in the building and creative industries, in local and international architecture firms, as well as in architecture administration, research and higher education institutions. Our highly international academic staff offer you individual career advice for entry into many job markets in Asia, Europe, Australia and the Americas.

### INTERSHIPS

The Department of Architecture fosters a constantly growing professional network in architecture and related fields. Being located close to the metropolitan area of Shanghai, with its dynamic architecture job market that attracts many international firms, means we can assist you to pursue job opportunities, internships and work placements in China and abroad.

### TEACHING AND RESEARCH ASSISTANTSHIPS

Our students are eligible for positions as graduate teaching and/or research assistants at XJTU, working up to 10 hours per week. These can contribute towards Additional Learning Activities and include a salary.



SCAN THE QR CODE  
TO VISIT THE  
PROGRAMME  
WEBSITE

PROGRAMME DIRECTOR  
[christian.gaanshirt@xjtlu.edu.cn](mailto:christian.gaanshirt@xjtlu.edu.cn)

GENERAL ENQUIRIES  
[pgenquiries@xjtlu.edu.cn](mailto:pgenquiries@xjtlu.edu.cn)

APPLY  
[www.xjtlu.edu.cn/en/find-a-programme/masters/master-of-architectural-design](http://www.xjtlu.edu.cn/en/find-a-programme/masters/master-of-architectural-design)



# DEPARTMENT OF BIOLOGICAL SCIENCES

The department of Biological Sciences has academic staff recruited from top universities and institutes around the world, thriving undergraduate and graduate programmes and first-rate research facilities.

Biological science has become one of the most important and exciting scientific disciplines of the 21st century, and its insights into life processes through genomics, diagnostics and therapeutic drug development are having a major impact on society.

Our department, with its dynamic and highly international staff, aims to make fundamental discoveries as well as to address some of the most pressing challenges facing society.



## BIOBAY DRAWS ON A DIVERSE ARRAY OF INTERNATIONAL AND PROFESSIONAL SCIENTIFIC RESEARCH RESOURCES TO PROVIDE A SOPHISTICATED INFRASTRUCTURE FOR BIOSCIENCE RESEARCH AND DEVELOPMENT; IT HAS OVER 400 BIOTECH COMPANIES.

### ACADEMIC STAFF

Our fast-growing, diverse body of academic staff have joined us from around the world and are highly research-active, having trained in prestigious universities including the Universities of Cambridge, Oxford, Edinburgh, UCL, California, Harvard, MIT, and Stanford, among other high-calibre institutions. Research interests are in the general area of the molecular biosciences, more specifically covering bioinformatics, cell signalling, disease mechanisms of neurodegenerative disorders, microbiology, molecular pharmacology, protein engineering and structural biology, proteomics, sensory system adaptation, stem cells, systems biology and virology.

### CUSTOM-DESIGNED LABS

Our department's custom-designed laboratories are extremely well-equipped for research as we have invested more than RMB 30 million in state-of-the-art instrumentation including:

- real-time PCR instruments
- LTQ-Orbitrap and triple quadrupole mass spectrometers
- Affymetrix microarray and DNA pyrosequencing systems
- bioanalysers, fluorescence-activated cell sorters and confocal microscopes
- a range of centrifuges and ultracentrifuges, PHERAstar microplate reader and an Odyssey infrared imaging system.

These facilities allow our researchers to undertake internationally competitive work while also training undergraduate and postgraduate students in advanced techniques.

### CHINA'S BASE FOR BIOMEDICAL RESEARCH AND DEVELOPMENT

Suzhou Industrial Park is rapidly becoming the best base in China for biomedical research and development and is particularly noted for its investment in the diagnostic and nanotech industries by establishing the BioBay science complex, which houses around 400 biotech companies ([en.biobay.com.cn/main/index.asp](http://en.biobay.com.cn/main/index.asp)). BioBay draws on a diverse array of international and professional scientific research resources to provide a sophisticated infrastructure for bioscience research and development. This has proven to be valuable in attracting international R&D institutes and renowned scientists to Suzhou. BioBay is within walking distance of XJTLU and is therefore an ideal place for students to do an internship.

SIP is also home to Cold Spring Harbour Asia ([www.csh-asia.org](http://www.csh-asia.org)) which hosts prestigious scientific symposia, conferences and summer schools in SIP, providing our students with the opportunity to interact with world-famous researchers.



# MRes

# MOLECULAR

# BIOSCIENCE

POSTGRADUATE 2019

## MRes MOLECULAR BIOSCIENCE

The MRes Molecular Bioscience programme provides a thorough understanding of key approaches for studying biological processes at the molecular level. It takes advantage of XJTLU's advanced English language capabilities, distinctive international features and state-of-the-art research facilities.

The programme covers biotechnology-related topics such as molecular biology, protein biochemistry and drug discovery, as well as post-genomic biology (genomics, transcriptomics, proteomics and bioimaging), and bioinformatics, such as acquisition and statistical analysis of large-scale biodata. It also places a major emphasis on providing project management skills. After these taught modules, the programme focuses on an in-depth research project and specialised dissertation. Customised individual learning plans are designed for students, in keeping with their backgrounds and career aspirations. Successful completion of the programme leads to the award of an MRes degree from the University of Liverpool, United Kingdom.

The Department of Biological Sciences at XJTLU has internationally respected investigators in this field of research with excellent teaching and laboratory infrastructure. Students have the opportunity to carry out world-class research in a dynamic, transnational environment.



SCAN THE QR CODE  
TO VISIT THE  
PROGRAMME  
WEBSITE

**PROGRAMME DIRECTOR**  
[tatsuhiko.kadowaki@xjtlu.edu.cn](mailto:tatsuhiko.kadowaki@xjtlu.edu.cn)

**GENERAL ENQUIRIES**  
[pgenquiries@xjtlu.edu.cn](mailto:pgenquiries@xjtlu.edu.cn)

**APPLY**  
[www.xjtlu.edu.cn/en/find-a-programme/masters/mres-molecular-bioscience](http://www.xjtlu.edu.cn/en/find-a-programme/masters/mres-molecular-bioscience)

### DISTINCTIVE FEATURES

- Taught by international academic staff who are experts in molecular bioscience
- Programme lasts 18 months – much shorter than masters degree programmes in most Chinese universities
- Excellent preparation for PhD programmes in high-quality Western and Chinese universities
- Relevant to careers in a wide range of bio-industries including biotechnology, bioengineering, bioagriculture, biomanufacturing, and pharmaceutical companies
- XJTLU is located near many biotechnology companies in BioBay, a national biotechnology hub with over 400 companies, ideal for internships
- Nearby Cold Spring Harbor Asia hosts prestigious scientific symposia, conferences and summer schools providing our students with the opportunity to interact with world-famous researchers
- Graduates of this programme, as with all XJTLU masters degrees, earn a University of Liverpool degree that is recognised by the Chinese Ministry of Education

### MODULES

RESEARCH METHODS IN BIOTECHNOLOGY

RESEARCH METHODS IN POST-GENOMIC BIOLOGY

RESEARCH METHODS IN BIOINFORMATICS

PROJECT MANAGEMENT

RESEARCH PROJECT

### ADDITIONAL LEARNING ACTIVITIES

The completion of additional learning activities is required to obtain your masters degree. Normally, required ALA hours will be distributed evenly across each semester, amounting to 200 hours per semester.

ALAs offered include:

- Personal and employability skills
  - English language modules
  - Chinese language classes for non-native speakers
  - Graduate teaching assistantship
  - PowerPoint presentation
  - Data recording and collection, Lab Book
  - Research project progress report
- Other appropriate academic activities are also available, such as participation in level three undergraduate modules and the Department's research seminar series.

### KNOWLEDGE AND SKILLS

By the time you graduate from the MRes Molecular Bioscience programme, you will have:

- developed key employable skills such as data analysis, report writing, team building/networking, and project management
- a range of critical interdisciplinary research skills and an internationally recognised qualification from a globally respected university.

### CAREERS

The MRes Molecular Bioscience programme prepares graduates for advanced research in both international and Chinese university settings, as well as in the bioindustrial sector such as biotechnology and pharmaceutical companies.

“The programme was more difficult but much more fun than I could have imagined. I realise this, really, is the joy of conducting scientific research.”

**BINGYU LI**  
ALUMNA  
MRes MOLECULAR BIOSCIENCE, CHINA





# DEPARTMENT OF CHEMISTRY

Students in the Department of Chemistry benefit from a fast-growing programme and first-rate academic staff as well as multiple operational research and teaching laboratories.

Chemistry has been regarded as the central science of the 21st century. Exciting in itself, it is also interconnected with a number of natural sciences and their subdisciplines such as physics, geology, environmental sciences, biology and medicine.

Chemistry plays an important role in pharmacology and drug discovery, nanotechnology, advanced materials, space research and environmental protection. A degree in chemistry will boost your employment opportunities within the chemical and pharmaceutical industries and provide great prospects in many other fields of industry and academia.



## INDUSTRY AND RESEARCH INSTITUTE CONNECTIONS

Sengen Medical (Suzhou) Co., Ltd: An biopharm company situated in BioBay in Suzhou Industrial Park. We have strong collaborations in the area of drug research and development with Sengen providing our students with numerous internship opportunities.

Suzhou Institute of Nano-tech and Nano-bionics (SINANO): Our department's close working relationship with SINANO supports research collaborations and student training. Many XJTLU students earn research internships or conduct their final year projects there, co-supervised by staff from both institutions.

Thermo Fisher Scientific: We are strongly linked with this company, one of the world's largest chemical manufacturers and suppliers and are developing summer internship opportunities.

## STRATEGIC RESEARCH

Our research aligns with the University's strategic areas of development in advanced materials, energy and environmental research and nanotechnology. These have critical applications in catalysis, energy storage, development of synthetic materials with specific activities and environmental research.

## STATE-OF-THE-ART LABS

Over RMB 30 million has been invested in state-of-the-art equipment including:

- nuclear magnetic resonance spectrometer
- MALDI-ToF and micro-ToF LCMS spectrometers
- single crystal X-ray diffractometers
- powder X-ray diffractometer
- UV-VIS, IR, Raman and fluorescence spectrometers
- electron scanning microscopes
- atomic force microscopes
- peptide synthesisers
- gas chromatography-mass spectrometry
- atomic force microscopes
- high performance liquid chromatography systems.

# MRes

# ADVANCED

# CHEMICAL

# SCIENCES

## MRes ADVANCED CHEMICAL SCIENCES

The MRes Advanced Chemical Sciences programme provides students with the education and training needed to understand different aspects of the field of material sciences. It aligns with similar MSc programmes at the University of Liverpool.

The programme contains taught modules covering areas from synthetic chemistry to nanotechnology to analytical methods and instrumentation. It places strong emphasis on the development of project management and professional skills. After completing the taught modules, you will engage in a 12-month extensive research project of your choice that leads to submission of a dissertation.

A customised learning plan is designed for you, taking into account your background and career aspirations. Successful completion of the programme leads to the award of an MRes degree from the University of Liverpool.



SCAN THE QR CODE  
TO VISIT THE  
PROGRAMME  
WEBSITE

**PROGRAMME DIRECTOR**  
[graham.dawson@xjtlu.edu.cn](mailto:graham.dawson@xjtlu.edu.cn)

**GENERAL ENQUIRIES**  
[pgenquiries@xjtlu.edu.cn](mailto:pgenquiries@xjtlu.edu.cn)

**APPLY**  
[www.xjtlu.edu.cn/en/find-a-programme/masters/mres-advanced-chemical-sciences](http://www.xjtlu.edu.cn/en/find-a-programme/masters/mres-advanced-chemical-sciences)

### DISTINCTIVE FEATURES

- Taught by international staff who are experts in various fields of chemistry
- Excellent preparation for the study of PhD programmes both at universities abroad or in China
- Offers strong links to local and international industries
- XJTLU is located close to the many biotechnology companies in nearby BioBay, a national biotechnology hub with over 400 companies, which is ideal for internships
- Nearby Cold Spring Harbor Asia hosts prestigious scientific symposia, conferences and summer schools providing our students with the opportunity to interact with world-famous researchers
- Earn a University of Liverpool degree that is recognised by the Chinese Ministry of Education

### MODULES

ADVANCED ANALYTICAL CHEMISTRY

NANOTECHNOLOGY AND ADVANCED MATERIALS

TOPICS IN ADVANCED ORGANIC CHEMISTRY

RESEARCH PROJECT

PROJECT MANAGEMENT

### ADDITIONAL LEARNING ACTIVITIES

The completion of additional learning activities are required to obtain your masters degree. Normally, required ALA hours will be distributed evenly across each semester, amounting to 200 hours per semester. Part-time programmes will normally require 100 to 150 hours per semester.

### KNOWLEDGE AND SKILLS

By the time you graduate, you will have:

- developed key, career-enhancing personal and employable skills such as time management, report writing, team-building, networking and project management
- gained a range of critical interdisciplinary research skills
- benefited from a strong theoretical background, practical instrumentation skills and an intensive research project.

### CAREERS

Successful graduates can establish careers in a wide range of industries, including:

- Chemical and material science
- Pharmaceuticals
- Biotechnology
- Food and beverages (quality assurance and new formulation)
- Analytical laboratories



"XJTLU's high-quality laboratories and equipment, combined with the expert academic staff have allowed me to conduct exciting research projects."

**AHMAD IMTIAZ**  
PHD STUDENT  
CHEMISTRY, PAKISTAN



# CHINA STUDIES

The Department of China Studies teaches and researches China's history, society, politics and culture. XJTLU's location in Suzhou creates a live learning laboratory in which to examine both China's ancient history and fast-paced contemporary society. Learning is enhanced by site visits to Chinese cities such as Chengdu and Xi'an.

Our students gain an in-depth understanding of the world's most populous nation and largest market. We welcome full-time students into our programme as well as students from other universities who wish to spend a semester or an academic year studying in China. China studies will be of interest to those studying any university degree, but will be of particular interest to students currently studying in the fields of politics, sociology, cultural studies, history and the social sciences. Students also have the opportunity to study the Chinese language during their time at XJTLU.





MA

CHINA

STUDIES

## MA CHINA STUDIES

With the rise of China as a global economic power there is an increasing demand among organisations and companies from around the world, working with and in China, for professionals with knowledge of China's political, economic and social systems and who can also speak Chinese.

The MA China Studies provides those in the programme with in-depth knowledge of China's history, politics, society and economy, in order to equip them with a more comprehensive understanding of China's complex socio-economic system. This knowledge will provide graduates of the programme with unique and important insights, as well as language training critical to operating and decision-making in the Chinese context.

Note: This programme is awaiting official recognition from the Ministry of Education of the People's Republic of China.

### DISTINCTIVE FEATURES

The Department of China Studies at XJTU has a large and diverse group of experts from around the world who will introduce students to different perspectives on China from different disciplinary backgrounds, including politics, history, political economy, literature and sociology, amongst others.

Our research ties with key universities in China's Jiangnan region (including in Shanghai, Jiangsu and Zhejiang provinces) provide further opportunities for students to enrich their learning experience by spending a period of study at one of those universities.



SCAN THE QR CODE  
TO VISIT THE  
PROGRAMME  
WEBSITE

**PROGRAMME DIRECTOR**  
[ceren.ergenc@xjtu.edu.cn](mailto:ceren.ergenc@xjtu.edu.cn)

**GENERAL ENQUIRIES**  
[pgenquiries@xjtu.edu.cn](mailto:pgenquiries@xjtu.edu.cn)

**APPLY**  
[www.xjtu.edu.cn/en/find-a-programme/masters/china-studies](http://www.xjtu.edu.cn/en/find-a-programme/masters/china-studies)

### MODULES

#### SEMESTER ONE

CHINA'S HISTORY

CHINA'S POLITICS

CHINESE SOCIETY

CHINA'S ECONOMY

#### SEMESTER TWO

CONTEMPORARY CHINESE LITERATURE

REGIONAL DEVELOPMENT

WELFARE AND DEVELOPMENT

TECHNOLOGY AND DEVELOPMENT

#### SEMESTER THREE

DISSERTATION

RESEARCH METHODS

RESEARCH SEMINAR

### KNOWLEDGE AND SKILLS

Students will acquire a comprehensive knowledge of China's history, culture, society, politics, and economy, as well as of China's regional, technological and social policy development. Students will also learn or improve their Chinese language skills.

### ADDITIONAL LEARNING ACTIVITIES

The completion of additional learning activities is required to obtain your masters degree. Normally, required ALA hours will be distributed evenly across each semester, amounting to 200 hours per semester. Possible activities include:

- Chinese language classes (up to 450 hours in total)
- Study period in China studies at another Chinese university
- Internships with industry

### CAREERS

Companies, non-profit organisations, and government agencies working in diverse fields (technology, health, media, culture and society) dealing with China or operating in China are demanding graduates with a comprehensive understanding of China's past and present society, economy and politics. Particularly for international students, this China expertise and ability to speak Chinese will enhance their career prospects in whichever field they operate in.





# DEPARTMENT OF CIVIL ENGINEERING

Our programmes are designed to produce engineers with sound knowledge, problem-solving skills and a comprehensive understanding of the multidisciplinary aspects of building design which combine the precision of civil, structural and building services engineering principles as well as the creativity of architecture.

As China is witnessing rapid economic transformation alongside unprecedented urbanisation, civil engineering students will be able to take full advantage of China's evolution. Our department educates technical professionals with an international outlook who can meet the industrial development requirements of the next century. You will be immersed in both the theory and practice of design and construction. Professors, lecturers and industry professionals from the department provide you with a well-rounded education and in-depth learning of the multidisciplinary interdependence and complexity involved with architectural engineering from the design phase to construction.

THE DEPARTMENT IS ALSO EQUIPPED WITH A STATE-OF-THE-ART ENVIRONMENTAL LAB INCLUDING ELEMENTAL ANALYSIS, GAS CHROMATOGRAPHY/MASS SPECTROMETRY, THERMOGRAVIMETRIC ANALYSIS, PARTICLE SIZE ANALYSIS, BET SPECIFIC AREA AND FIBRE EXTRACTION UNITS.

## DIVERSE RESEARCH

Our research is diverse covering modern engineering construction and energy production methods. We particularly encourage active learning in the delivery of our programmes.

Our research covers:

- material and structural behaviour of fibre-reinforced cementitious composites
- usage of GGBS (ground-granulated blast-furnace slag) as a cement replacement in concrete
- construction with timber
- strengthening and rehabilitation of statically deficient structures
- advanced structural modelling
- sustainable infrastructure, building information modelling (BIM) and construction simulation
- groundwater contamination and biochemical decomposition of biomass
- renewable energy and biofuels
- modelling of nanostructured materials for energy applications.

Your final thesis topic may reflect the department's research interests. You will have the opportunity to continue projects in the form of a PhD.

## FACILITIES

We have world-class laboratory teaching facilities. These include an extensive structures laboratory, structural testing frames for a range of scales, an earthquake shaking table laboratory facility, a geotechnics centrifuge laboratory facility, hydraulics laboratories for water and air flow and extensive soil mechanics laboratory facilities. We also have three universal testing machines, a range of concrete mixing facilities, comprehensive highway materials laboratories, a timber processing lab, wastewater treatment benches, advanced structural simulation software (ANSYS), and building information modelling software (Autodesk Revit).

The department is also equipped with a state-of-the-art chemical analysis lab including elemental analysis, gas chromatography/mass spectrometry, thermogravimetric analysis, particle size analysis, BET specific area and fibre extraction units.

## INDUSTRIAL LINKS

We have links with a number of enterprises such as the Shanghai Construction Group, as well as international companies such as ARUP UK. The possibility of summer internships for students, which could lead to future employment, is greatly enhanced because of these relationships.





# MSc

# CIVIL

# ENGINEERING

POSTGRADUATE 2019

## MSc CIVIL ENGINEERING

The MSc Civil Engineering programme incorporates all of the contemporary key elements of engineering design in the built environment. During their studies, students extend their knowledge and develop a high level of skills in the fields of engineering structures, construction management, geotechnical engineering and innovative construction materials. Students in this programme are educated in the theoretical aspects of the recent advances in those fields, whilst also acquiring a professional approach to the solution of technical problems.

The MSc Civil Engineering programme embraces research-led teaching, where the students are actively engaged by accomplishing technical tasks, either in the form of group work or individual projects. The programme places a great emphasis on independent critical thinking, which is a key feature for the development of professional engineering insight.

This full-time 18-month programme comprises two semesters of taught modules, assessed by coursework and examination, followed by a research dissertation during your third semester. All the modules are delivered by international academic staff who specialise in sustainability and civil engineering. Graduates of this programme, as with all XJTLU masters degrees, earn a University of Liverpool degree that is recognised by the Chinese Ministry of Education.



SCAN THE QR CODE  
TO VISIT THE  
PROGRAMME  
WEBSITE

**PROGRAMME DIRECTOR**  
[thoefanis.krevaikas@xjtlu.edu.cn](mailto:thoefanis.krevaikas@xjtlu.edu.cn)

**GENERAL ENQUIRIES**  
[pgenquiries@xjtlu.edu.cn](mailto:pgenquiries@xjtlu.edu.cn)

**APPLY**  
[www.xjtlu.edu.cn/en/find-a-programme/masters/msc-civil-engineering](http://www.xjtlu.edu.cn/en/find-a-programme/masters/msc-civil-engineering)

### MODULES

Our graduates gain highly theoretical and professional specialised knowledge and are able to solve technical problems of great complexity. Within the context of the programme's modules, the students learn to assess and evaluate technical problems and implement simple yet efficient techniques, adopting a professional approach.

#### SUSTAINABLE TECHNOLOGY AND BUILDING MATERIALS

#### SUSTAINABLE DRAINAGE SYSTEMS

#### CRITICAL STATE SOIL MECHANICS

#### ADVANCED CONSTRUCTION MANAGEMENT

#### ADVANCED SIMULATION OF SUSTAINABLE STRUCTURAL SYSTEMS

#### SUSTAINABLE ENGINEERING WITH TIMBER

#### ENVIRONMENTAL ENGINEERING AND MANAGEMENT PRACTICE

#### ADVANCED STRUCTURAL DESIGN

#### DISSERTATION

### ADDITIONAL LEARNING ACTIVITIES

The completion of additional learning activities is required to obtain your masters degree. Normally, required ALA hours will be distributed evenly across each semester, amounting to 200 hours per semester. Part-time programmes will normally require 100 to 150 hours per semester.

### DISTINCTIVE FEATURES

The MSc. in Civil Eng. offers an international degree, accredited by one of the world's most powerful professional body, the UK Joint Board of Moderators. Students have the opportunity to work within an international environment where international professionals (engineers & academics) offer their experience. Our graduates are not only equipped with a higher level of knowledge, but are trained to become competitive professionals as well.

### CAREERS

The MSc Civil Engineering programme provides an advanced level of knowledge, which allows our graduates to obtain employment across the industry. Upon graduation, students are ready to follow a professional career as consultants in the construction industry, managers on construction sites, as well as in public authorities such as water management and infrastructure facilities. More specifically, graduates of this programme can be employed as structural engineers, geotechnical engineers, hydraulic and hydrologic engineers, quantity surveyors and quality managers.

### ACCREDITATION

This degree is accredited by Joint Board of Moderators (JBM) as meeting the requirements for Further Learning for a Chartered Engineer (CEng), for candidates who have already acquired a partial CEng accredited undergraduate first degree.

See [www.jbm.org.uk](http://www.jbm.org.uk) for further information and details of Further Learning programmes for CEng.



Dr Krevaikas has been in charge of several projects involving the strengthening and rehabilitation of existing structures and is an expert in the field. In the past he has worked as a scientific expert with the Greek Ministry of Culture on projects involving the conservation and static upgrading of heritage buildings. Recent work includes experimental investigation of the behaviour of masonry structures strengthened with textile reinforced mortars (TRMs).

**Dr THEOFANIS KREVAIKAS**  
PROGRAMME DIRECTOR  
MSc CIVIL ENGINEERING



# MSc

# SUSTAINABLE

# CONSTRUCTION

## MSc SUSTAINABLE CONSTRUCTION

The MSc Sustainable Construction programme provides students with technologically advanced knowledge, problem-solving skills and a comprehensive understanding of the key aspects of sustainability in civil engineering construction. It is intended to provide critical awareness of current and future problems associated with the intervention of sustainability strategies and their integration in the civil engineering sector, as well as prospective solutions from existing and emerging scientific technologies.

This full-time 18-month programme comprises two semesters of taught modules, assessed by coursework and examination, followed by a research dissertation during your third semester. All the modules are delivered by international academic staff who specialise in sustainability and sustainable construction.

Graduates of this programme, as with all XJTLU masters degrees, earn a University of Liverpool degree that is recognised by the Chinese Ministry of Education.



SCAN THE QR CODE  
TO VISIT THE  
PROGRAMME  
WEBSITE

**PROGRAMME DIRECTOR**  
[konstantinos.papadikis@xjtlu.edu.cn](mailto:konstantinos.papadikis@xjtlu.edu.cn)

**GENERAL ENQUIRIES**  
[pgenquiries@xjtlu.edu.cn](mailto:pgenquiries@xjtlu.edu.cn)

**APPLY**  
[www.xjtlu.edu.cn/en/find-a-programme/masters/msc-sustainable-construction](http://www.xjtlu.edu.cn/en/find-a-programme/masters/msc-sustainable-construction)

### DISTINCTIVE FEATURES

- A multidisciplinary perspective, with modules delivered by the departments of Civil Engineering, Architecture, Urban Planning and Electrical and Electronic Engineering on the application of sustainable practices in civil engineering construction.
- An integrated and comprehensive degree programme that places great emphasis on sustainable design and development in the civil engineering sector.
- An advanced level curriculum enhanced by practical applications, specialised domain research seminars and industrial training.

### MODULES

INTEGRATION OF ENERGY STRATEGIES IN THE DESIGN OF BUILDINGS

SUSTAINABLE URBAN PLANNING STRATEGIES

SUSTAINABLE ENERGY AND ENVIRONMENT

SUSTAINABLE TECHNOLOGY AND BUILDING MATERIALS

SUSTAINABLE DRAINAGE SYSTEMS

ADVANCED SIMULATION OF SUSTAINABLE STRUCTURAL SYSTEMS

SUSTAINABLE ENGINEERING WITH TIMBER

ENVIRONMENTAL ENGINEERING AND MANAGEMENT PRACTICE

DISSERTATION

### ADDITIONAL LEARNING ACTIVITIES

The completion of additional learning activities is required to obtain your masters degree. Normally, required ALA hours will be distributed evenly across each semester, amounting to 200 hours per semester. Part-time programmes will normally require 100 to 150 hours per semester.

### ACCREDITATION

This degree is accredited by Joint Board of Moderators (JBM) as meeting the requirements for Further Learning for a Chartered Engineer (CEng) for candidates who have already acquired a partial CEng accredited undergraduate first degree.

See [www.jbm.org.uk](http://www.jbm.org.uk) for further information and details of Further Learning programmes for CEng.



### CAREERS

Graduates of the MSc Sustainable Construction programme find excellent opportunities in the environmental construction and management sectors, governmental regulatory agencies, sustainable technology specialists, as well as environmental consultants. Graduates of this programme will be equipped to take up professional employment in the civil engineering industry and become lifelong learners, with an appreciation of the value to society of an education in sustainable construction. More specifically, graduates from MSc Sustainable Construction can be employed as green infrastructure engineers, water resources engineers, construction site engineers, environmental consultant engineers and sustainable technology developers.

The MSc Sustainable Construction programme can be used as Further Learning, the final element of the educational base for being a chartered engineer (CEng).



“After completing my undergraduate degree in civil engineering here at XJTLU, I decided to take this masters option. I like the teaching style here as students can openly discuss things with professors. Their professional knowledge is just a small part of it, they also teach me how to study, and give me life-advice. I think in the future I will join a green building team to do building improvements for sustainability.”

**PUYUE GONG**  
ALUMNA  
MSc SUSTAINABLE CONSTRUCTION, CHINA



# DEPARTMENT OF COMPUTER SCIENCE AND SOFTWARE ENGINEERING

Computer systems affect every part of our daily lives as they are used by every conceivable type of organisation. These systems are highly interdisciplinary with historical roots in mathematics, physics and electronics. Over the years, computer scientists and software engineers remain at the cutting edge by creating more intelligent and effective solutions to problems.

The Department of Computer Science and Software Engineering equips its students with a broad knowledge of computer-based systems and the technical skills to work in research, development or technical support. Students learn how to use skills creatively to solve practical problems and how cutting-edge computer technology is developed.

Our highly qualified staff have a diverse range of international experience in teaching, research and working with industry, which, together with our active research and business interactions, benefit our students by enhancing their learning experience and employability.



## RESEARCH

Our research aims to develop leading-edge solutions to real-world problems by investigating rigorous theory and applied approaches. Our staff members are highly recognised for their world-quality research.

Staff have a large number of research publications in top international journals including those sponsored by the Institute of Electrical and Electronics Engineers and the Association for Computing Machinery. Additionally, many of our staff members are editors and reviewers for a wide range of academic journals and conferences. The department has a record of successfully attracting funding from various local, provincial, national, and international sources such as the European Union and the National Natural Science Foundation of China, and we collaborate on projects in China as well as across Asia, Europe and North America.

Your final postgraduate thesis topic may reflect the department's research interests and you will have the opportunity to continue projects in to PhD level.

OUR CURRENT EXPERTISE INCLUDES ARTIFICIAL INTELLIGENCE, CYBER PHYSICAL SYSTEMS, BIG DATA ANALYTICS, SOCIAL COMPUTING, ENTERPRISE COMPUTING, FINANCIAL COMPUTING, ENERGY HARVESTING, HUMAN-COMPUTER INTERACTION, IMAGE PROCESSING AND COMPUTER VISION, NETWORKING, OPERATING SYSTEMS AND ROBOTICS.

## INDUSTRIAL LINKS

Along with research, we are active in business engagement and have worked with industry on practical projects, contributing to the community and bringing hands-on experience to our staff and students. We are located in Suzhou Industrial Park, where a large number of the Fortune top 500 companies have their branches, research and development centres or production facilities. As the only academic department at XJTLU working on computer science, software engineering, new media and web applications, we work with industrial organisations in a variety of ways from curriculum development and specialist training to student placements and special projects. We have established links with a number of companies in SIP including Microsoft, Oracle, Cisco, Lego and NCS.

We engage students in research and industry-related work and, under the supervision of staff, our students have published their research outcomes.

## UNIQUE EDUCATION EXPERIENCE

Computer science and software engineering requires creativity, insight and problem-solving skills. Study in this field provides routes into a variety of careers and, by studying with us, you will receive a unique education experience and benefit from:

- teaching by international academic staff who are highly skilled subject experts
- well-designed curriculum adopted from the University of Liverpool, which is updated regularly to reflect the latest developments and evolving needs of employers
- a range of learning activities which help to develop strong problem-solving skills and derive innovative solutions
- opportunities and encouragement to carry out real-life work and research with prestigious companies in Suzhou, Shanghai and Wuxi, and in turn, to gain inspiration, creativity, hands-on experience and enhanced employability
- modern specialist lab facilities for operating systems, networking, mobile computing and multimedia technology.



# MSc

# APPLIED

# INFORMATICS

POSTGRADUATE 2019

## MSc APPLIED INFORMATICS

Computer Systems have become an increasingly important part of our society and our working lives. Virtually all modern organisations rely heavily on computer systems and there is a great need for suitably qualified computing professionals.

The MSc Applied Informatics programme will train you for advanced technical or managerial roles in computing areas such as finance informatics, information systems or telecommunications.

Graduates of this programme, as with all XJTLU masters degrees, earn a University of Liverpool degree that is recognised by the Chinese Ministry of Education.

### KNOWLEDGE AND SKILLS

Studying the MSc Applied Informatics programme will equip you with:

- theoretical and practical knowledge of key technological and business areas in the IT industry
- practical skills in research, analysis, realisation and evaluation of IT systems including the write-up of technical and research documents
- key tools enabling you to enhance and apply your skills in management, design and the implementation of IT-based solutions in different application domains



SCAN THE QR CODE  
TO VISIT THE  
PROGRAMME  
WEBSITE

**PROGRAMME DIRECTOR**  
[p.craig@xjtlu.edu.cn](mailto:p.craig@xjtlu.edu.cn)

**GENERAL ENQUIRIES**  
[pgenquiries@xjtlu.edu.cn](mailto:pgenquiries@xjtlu.edu.cn)

**APPLY**  
[www.xjtlu.edu.cn/en/find-a-programme/masters/msc-applied-informatics](http://www.xjtlu.edu.cn/en/find-a-programme/masters/msc-applied-informatics)

### MODULES

You will undertake four required modules, a dissertation project and three optional modules from areas such as financial mathematics, telecommunications, interactive systems, social computing and information security.

### CORE MODULES

DATA MINING AND BIG DATA ANALYTICS

PROJECT MANAGEMENT

RESEARCH METHODS

SOFTWARE ARCHITECTURES

DISSERTATION PROJECT

### ELECTIVE MODULES

COMPUTATIONAL METHODS IN FINANCE

COMPUTER SYSTEMS SECURITY

IMAGE AND VIDEO PROCESSING

INTERACTIVE SYSTEMS

MOBILE COMMUNICATIONS

OBJECT-ORIENTED PROGRAMMING

SOCIAL NETWORK ANALYSIS

SOCIAL WEB PROGRAMMING

### ADDITIONAL LEARNING ACTIVITIES

The completion of additional learning activities is required to obtain your masters degree. Normally, required ALA hours will be distributed evenly across each semester, amounting to 200 hours per semester. Part-time programmes will normally require 100 to 150 hours per semester.

### CAREERS

MSc Applied Informatics graduates will find employment in the IT sector as systems analysts, managers, software engineers, application architects, developers and project leaders. Some students choose to continue as PhD candidates.



Paul Craig has been a researcher working in the area of Information visualisation for around 10 years. He completed his PhD, studying the use of Animated Information Visualization for the Exploratory analysis of microarray time-course data, with Professor Jessie Kennedy at Edinburgh Napier University in 2006, and has since worked as a research fellow on projects for the National Science Foundation, Scottish enterprise, and the European Community in the areas of taxonomy, bioinformatics and intelligent interfaces.

Dr PAUL CRAIG  
PROGRAMME DIRECTOR  
MSc APPLIED INFORMATICS

XJTLU

POSTGRADUATE 2019

71

72



# MRes

# COMPUTER

# SCIENCE

## MRes COMPUTER SCIENCE

The MRes Computer Science programme is designed to develop research skills and allow students to specialise in a specific field of study, within the broader area of computer science. This will prepare you for future employment in a specialised area or a role involving academic research or industrial research and development.

Graduates of this programme, as with all XJTLU masters degrees, earn a University of Liverpool degree that is recognised by the Chinese Ministry of Education.

### KNOWLEDGE AND SKILLS

The MRes Computer Science programme will equip you with comprehensive knowledge and understanding of:

- advanced theoretical fundamentals of current trends in computer science
- state-of-the-art key research issues in specialised areas of computer science
- techniques for project management and the design, implementation and evaluation of IT solutions



SCAN THE QR CODE  
TO VISIT THE  
PROGRAMME  
WEBSITE

**PROGRAMME DIRECTOR**  
[p.craig@xjtlu.edu.cn](mailto:p.craig@xjtlu.edu.cn)

**GENERAL ENQUIRIES**  
[pgenquiries@xjtlu.edu.cn](mailto:pgenquiries@xjtlu.edu.cn)

**APPLY**  
[www.xjtlu.edu.cn/en/find-a-programme/masters/mres-computer-science](http://www.xjtlu.edu.cn/en/find-a-programme/masters/mres-computer-science)

### MODULES

You will complete four taught modules in the first semester, followed by a research project for a total duration of 18 months. The precise content of your research project will be discussed and decided with your project supervisor and is subject to approval.

### CORE MODULES

RESEARCH METHODS

PROJECT MANAGEMENT

DISSERTATION PROJECT

### ELECTIVE MODULES

CLOUD COMPUTING

DATA MINING AND BIG DATA ANALYTICS

INTERACTIVE SYSTEMS

OBJECT-ORIENTED PROGRAMMING

### ADDITIONAL LEARNING ACTIVITIES

The completion of additional learning activities is required to obtain your masters degree. Normally, required ALA hours will be distributed evenly across each semester, amounting to 200 hours per semester. Part-time programmes will normally require 100 to 150 hours per semester.

### CAREERS

Graduates from this programme will find employment as research and development engineers, systems developers and project leaders in IT companies, or will go on to further studies as PhD candidates.



"I was impressed so much by the dedication and support from staff along with the modern facilities and environment for study and life at XJTLU. I am very excited by the publication of my work completed with my supervisor. I enjoyed the unique additional learning activities including working as a teaching assistant. All my time at XJTLU laid a solid foundation for my full PhD scholarship in Australia."

**JIANQING WU**  
ALUMNUS  
MRes COMPUTER SCIENCE



"China's fast pace of development is fuelled by its technological advancements and joining XJTLU will position me at the helm of cutting-edge and innovative technology."

**DAVID AFOLABI**  
PHD STUDENT  
DEPARTMENT OF CSSE



# MSc

# SOCIAL

# COMPUTING

## MSc SOCIAL COMPUTING

The internet revolution has generated a social interactive environment that creates new business opportunities for enterprises. Many international software development enterprises such as IBM, HP, Microsoft, Google and SAS have their own social computing/media development teams. Other IT enterprises, such as Apple, Oracle, CISCO and Nokia own products with social computing functions. Similarly, many national and international companies successfully turn significant profits through social network sites such as Facebook, LinkedIn, Yahoo, Twitter, Google, Myspace, Amazon, Sina Weibo, TaoBao, RenRen and QQ.

The MSc Social Computing programme addresses market demand by providing you with training for understanding, managing, developing, implementing and commercialising interactive social media on the internet. It will train you for advanced technical or managerial roles in new interdisciplinary areas of social informatics and internet computing.

The department is equipped with specialist lab facilities for operating systems, networking, mobile computing and multimedia technology that will support your learning and research.

Graduates of this programme, as with all XJTLU masters degrees, earn a University of Liverpool degree that is recognised by the Chinese Ministry of Education.



SCAN THE QR CODE  
TO VISIT THE  
PROGRAMME  
WEBSITE

**PROGRAMME DIRECTOR**  
kevin.yuen@xjtlu.edu.cn

**GENERAL ENQUIRIES**  
pgenquiries@xjtlu.edu.cn

**APPLY**  
[www.xjtlu.edu.cn/en/find-a-programme/masters/msc-social-computing](http://www.xjtlu.edu.cn/en/find-a-programme/masters/msc-social-computing)

### MODULES

You will complete eight modules in the first two semesters and a dissertation project in the third semester for a total duration of 18 months. The precise content of your dissertation project will be discussed and decided with your project supervisor and is subject to approval.

### CORE MODULES

CLOUD COMPUTING

PROJECT MANAGEMENT

RESEARCH METHODS

SOCIAL MEDIA MARKETING

SOCIAL NETWORK ANALYSIS

SOCIAL WEB PROGRAMMING

DISSERTATION.

### ELECTIVE MODULES

COMPUTER SYSTEMS SECURITY

DATA MINING AND BIG DATA ANALYTICS

INTERACTIVE SYSTEMS

OBJECT-ORIENTED PROGRAMMING

SOCIAL COMMERCE.

### ADDITIONAL LEARNING ACTIVITIES

The completion of additional learning activities is required to obtain your masters degree. Normally, required ALA hours will be distributed evenly across each semester, amounting to 200 hours per semester. Part-time programmes will normally require 100 to 150 hours per semester.

### KNOWLEDGE AND SKILLS

By studying MSc Social Computing, you will gain:

- theoretical and practical knowledge of key areas of social business and social computing in both industry and research
- key tools enabling you to enhance and apply your skills in management, design and implementation of IT-based solutions to social business and computation domains
- practical skills in research, analysis, realisation and evaluation of technical or research documents in social commerce and social computing.

### CAREERS

Graduates from the MSc Social Computing programme can find employment as research and development engineers, systems developers and project leaders in IT companies. Some students choose to go on to further study as PhD candidates.



Kevin Yuen has published more than 45 research articles in journals, book chapters and conferences. He has served as guest editor for two reputed journals: Neurocomputing and Engineering Applications of Artificial Intelligence (EAAI). Dr Yuen has taught a range of modules, including Machine Learning, Artificial Intelligence, Formal Methods, Human-Centric Computing, Systems Engineering, and Business Simulations with Computational Intelligence.

Dr KEVIN YUEN  
PROGRAMME DIRECTOR  
MSc SOCIAL COMPUTING



# MSc

# FINANCIAL

# COMPUTING

## MSc FINANCIAL COMPUTING

With the rapid advancement of computing technology, there is an increasing demand in the dynamic and challenging environment of financial services, for a variety of technological talent to deliver business solutions on a global scale.

The MSc Financial Computing programme addresses market demand and will train you for advanced technical or managerial roles in new interdisciplinary areas of computational techniques and equip you with financial knowledge to deliver effective business solutions.

The Department of Computer Science and Software Engineering is equipped with specialist lab facilities for operating systems, networking, mobile computing and multimedia technology that will support your learning and research.

Graduates of this programme, as with all XJTLU masters degrees, earn a University of Liverpool degree that is recognised by the Chinese Ministry of Education.



SCAN THE QR CODE  
TO VISIT THE  
PROGRAMME  
WEBSITE

**PROGRAMME DIRECTOR**  
[andrew.abel@xjtlu.edu.cn](mailto:andrew.abel@xjtlu.edu.cn)

**GENERAL ENQUIRIES**  
[pgenquiries@xjtlu.edu.cn](mailto:pgenquiries@xjtlu.edu.cn)

**APPLY**  
[www.xjtlu.edu.cn/en/find-a-programme/masters/msc-financial-computing](http://www.xjtlu.edu.cn/en/find-a-programme/masters/msc-financial-computing)

### MODULES

You will undertake eight modules in the first two semesters and a dissertation project in the third semester, for a total duration of 18 months. You will choose these modules based on the subject area of your first degree, such as computing, finance or other fields. The precise content of your dissertation project will be discussed and decided with your project supervisor and is subject to approval.

### CORE MODULES

RESEARCH METHODS  
DATA MINING AND BIG DATA ANALYTICS/DATABASES AND DATA MANAGEMENT/DATA MINING AND MACHINE LEARNING  
ACCOUNTING AND FINANCIAL MANAGEMENT/ADVANCED DERIVATIVES  
DISSERTATION

### ELECTIVE MODULES

CLOUD COMPUTING  
COMPUTER SYSTEMS SECURITY  
INTERACTIVE SYSTEMS  
MACHINE LEARNING  
OBJECT-ORIENTED PROGRAMMING  
SOFTWARE ARCHITECTURE  
ADVANCED CORPORATE FINANCE  
ADVANCED INVESTMENTS  
ALTERNATIVE INVESTMENTS AND STRATEGIES  
INTERNATIONAL FINANCE AND ECONOMICS

### ADDITIONAL LEARNING ACTIVITIES

The completion of additional learning activities is required to obtain your masters degree. Normally, required ALA hours will be distributed evenly across each semester, amounting to 200 hours per semester. Part-time programmes will normally require 100 to 150 hours per semester.

### KNOWLEDGE AND SKILLS

By studying MSc Financial Computing, you will gain:

- theoretical and practical knowledge of key areas of finance and computing in both industry and research
- knowledge of the latest technology and applications for the finance industry, such as big data and business analytics
- practical skills in research, analysis, realisation and evaluation of technical or research documents in financial computing.

### CAREERS

MSc Financial Computing graduates can find employment as software engineers, database specialists, infrastructure managers, financial analysts, financial consultants, business analysts, system analysts, investment analysts, e-finance architects, credit managers, portfolio managers, business intelligence executives, wealth services officers, and risk management auditors amongst others.



Professor Yue has worked for over 30 years in both industry and academia. His research interests include computer graphics, CAD/CAM, robotics, operations research and optimisations. He has led a considerable number of research and professional projects supported by major funding bodies and industry, with collaborative links in more than 10 countries. He has over 160 peer-reviewed international publications and has supervised 10 PhD students to completion. He is currently Associate Editor for the International Journal of Computer Applications in Technology and the International Journal of Distributed Systems and Technologies.

**PROFESSOR YONG YUE**  
HEAD OF DEPARTMENT  
COMPUTER SCIENCE AND SOFTWARE ENGINEERING



# DEPARTMENT OF ELECTRICAL AND ELECTRONIC ENGINEERING

The Department of Electrical and Electronic Engineering prepares students to excel in one of today's fastest-changing fields. Our commitment to cutting-edge research and continual programme development helps ensure that students graduate at the forefront of their chosen field and are well-prepared to lead the development of the profession and the field.

Our programmes are designed to give you solid training in both software and hardware. Emphasis is placed on the principles of electrical and electronic engineering as well as more specialised subject areas.



## LEARNING AND TEACHING

The teaching of the programmes focusses on applying theory to practice in order to enhance your practical experiences, abilities and skills.

You will have the chance to develop a range of subject-related tools and techniques, especially computer-assisted design technology and measurement skills. The delivery of the modules focusses on the development of your ability to choose tools appropriate to each individual project.

## STATE-OF-THE-ART-LABS

We have established an electronic laboratory, electric machine laboratory, ARM Laboratory, altera laboratory and tanner tools laboratory, which are all well-appointed with state-of-the-art equipment. We are also setting-up new lab facilities such as:

- a high-frequency engineering laboratory, equipped with state-of-the-art hardware and measurement facilities including a 6 x 4 x 3m pyramidal-cone anechoic chamber, vector network analysers and LDKF ProtoMat printed circuit board fabrication equipment
- a power electronic laboratory
- a sustainable energy laboratory
- a telecommunication laboratory.

In addition, RMB 15 million has been invested in equipment in the microelectronics and photonics laboratories, including a zoom2 class 1K room and a class 10K room.



# MRes

# LOW CARBON

# ELECTRICAL

# POWER AND

# ENERGY

# TECHNOLOGY

## MRes LOW CARBON ELECTRICAL POWER AND ENERGY TECHNOLOGY

The MRes Low Carbon Electrical Power and Energy Technology programme provides advanced and systematic education and training in the areas of electronic science and technology. It has been designed to respond to the vigorous development of electric power and energy technology in China and worldwide.

The programme contains taught courses covering solar converters, wind power systems, energy storage technology and smart grids. It places strong emphasis on hands-on experience and practical skills development. A 12-month extensive research project is required which leads to submission of a dissertation after students have finished the taught modules.

Note: This programme is awaiting official recognition from the Ministry of Education of the People's Republic of China.



SCAN THE QR CODE  
TO VISIT THE  
PROGRAMME  
WEBSITE

**PROGRAMME DIRECTOR**  
[Huiqing.Wen@xjtlu.edu.cn](mailto:Huiqing.Wen@xjtlu.edu.cn)

**GENERAL ENQUIRIES**  
[pgenquiries@xjtlu.edu.cn](mailto:pgenquiries@xjtlu.edu.cn)

**APPLY**  
<http://www.xjtlu.edu.cn/en/find-a-programme/masters/low-carbon-electrical-power-and-energy-technology>

### MODULES

SUSTAINABLE ENERGY AND ENVIRONMENT  
POWER SYSTEM NETWORK AND SMART GRID  
NUCLEAR ENERGY TECHNOLOGY  
RESEARCH METHODS  
RESEARCH PROJECT/DISSERTATION

### ADDITIONAL LEARNING ACTIVITIES

The completion of additional learning activities is required to obtain your masters degree. Normally, required ALA hours will be distributed evenly across each semester, amounting to 200 hours per semester. Part-time programmes will normally require 100 to 150 hours per semester.

### KNOWLEDGE AND SKILLS

The MRes Low Carbon Electrical Power and Energy Technology programme provides advanced systematic education and training in the areas of electronic science and technology. You will develop the understanding of state-of-the-art electrical power and energy technology, be able to research and critically evaluate trends in current technologies of energy management, sustainability, renewable energy and nuclear energy. You'll acquire skills in planning, project management and communicating complex ideas and gain experience in conducting extended research and/or developing project work.

### CAREERS

There has been a growing demand for senior R&D talents especially in the area of electrical power and energy. With the development of China's economy and internationalisation, graduates from the MRes programme will have wider employment prospects such as electric power system engineers, electric power system consultants, electrical technology consultants, electric power project managers, sustainable cities and building design consultants, managers and team leaders in government.





# MSc

# MULTIMEDIA

# TELE-

# COMMUNICATIONS

## MSc MULTIMEDIA TELECOMMUNICATIONS

Artificial intelligence (AI) is playing an increasingly important role in our everyday lives and it is believed that many traditional jobs will be replaced by machines equipped with AI technology. Some important AI technologies will be covered in this programme, including deep learning, computer vision, and image and video processing.

Multimedia and wireless communications is a rapidly growing area in the booming communications industry. New standards such as 4G and 5G for mobile networking enable applications including triple services for mobile networks, digital television, video streaming, interactive gaming, navigation services, and emergency and healthcare applications. It is technologically challenging to deliver these multimedia applications and services efficiently over emerging and diverse wireless networks. To meet this challenge, engineers need to have a deep understanding of wireless and multimedia technologies.

The MSc Multimedia Telecommunications programme aims to provide you with an understanding of the technical characteristics of wireless systems and artificial intelligence technologies. It will cover advanced topics in wireless communications and multimedia. This programme will also cover technologies to understand multimedia data using state-of-the-art AI technologies, such as deep learning.



SCAN THE QR CODE  
TO VISIT THE  
PROGRAMME  
WEBSITE

**PROGRAMME DIRECTOR**  
[jimin.xiao@xjtlu.edu.cn](mailto:jimin.xiao@xjtlu.edu.cn)

**GENERAL ENQUIRIES**  
[pgenquiries@xjtlu.edu.cn](mailto:pgenquiries@xjtlu.edu.cn)

**APPLY**  
[www.xjtlu.edu.cn/en/find-a-programme/masters/msc-multimedia-telecommunications](http://www.xjtlu.edu.cn/en/find-a-programme/masters/msc-multimedia-telecommunications)

You will benefit from:

- a degree from a globally respected university
- excellent research facilities with advanced experimental equipment
- knowledge of cutting-edge technologies needed in the job market
- abundant opportunities to get involved in various national or industry-funded projects

Graduates of this programme, as with all XJTLU masters degrees, earn a University of Liverpool degree that is recognised by the Chinese Ministry of Education.

### CORE MODULES

ADVANCED SIGNAL PROCESSING

IMAGE AND VIDEO PROCESSING

DEEP LEARNING FOR COMPUTER VISION

DATA COMMUNICATION AND COMMUNICATION NETWORKS

MOBILE COMMUNICATIONS

MULTIMEDIA COMMUNICATIONS

CODING AND CRYPTOGRAPHY

PROJECT MANAGEMENT

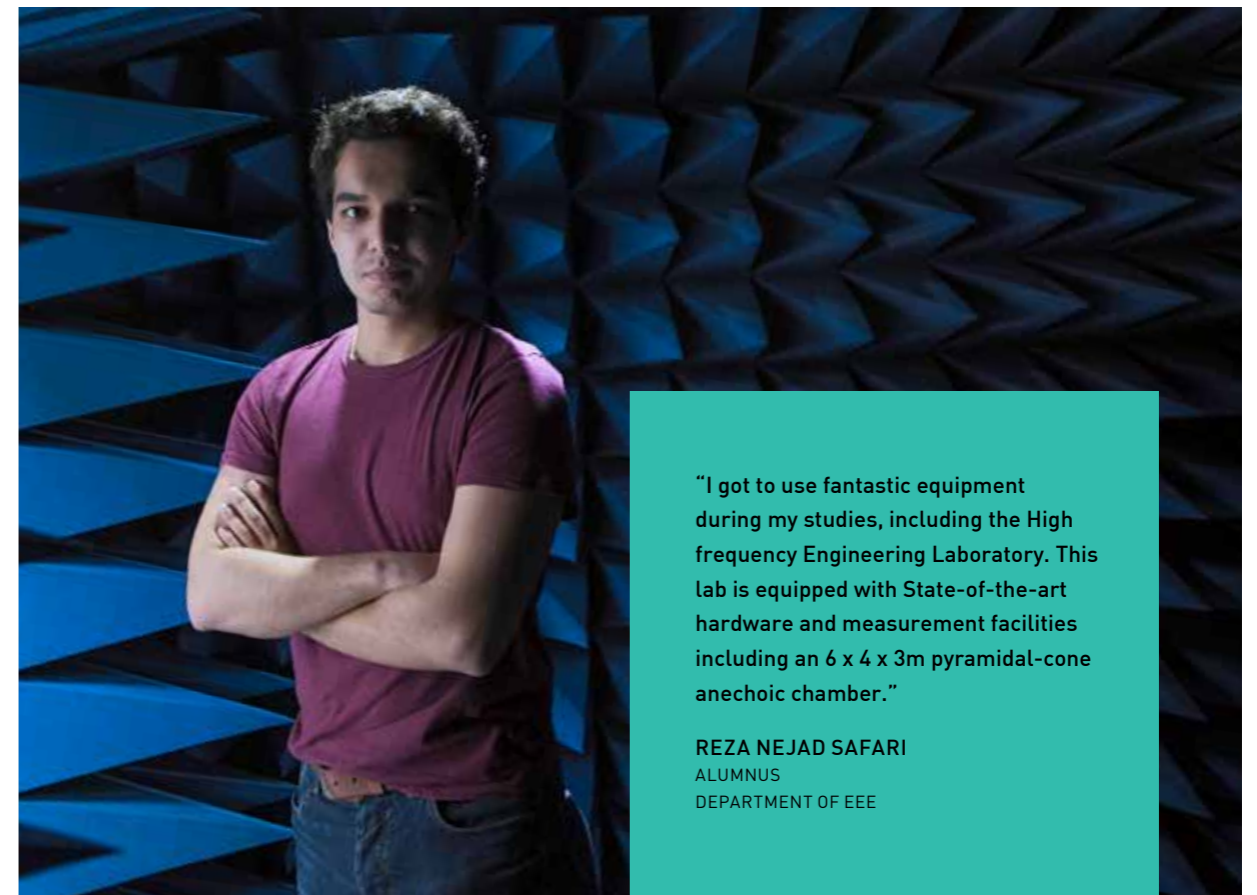
DISSERTATION

### KNOWLEDGE AND SKILLS

The completion of additional learning activities is required to obtain your masters degree. Normally, required ALA hours will be distributed evenly across each semester, amounting to 200 hours per semester. Part-time programmes will normally require 100 to 150 hours per semester.

### CAREERS

Graduates of this programme will have skills that are in demand in a job market with abundant research and application opportunities. You will have the necessary skills to enter careers in some of the most dynamic fields in image and video communications, artificial intelligence, computer vision, and will typically be employed as multimedia systems engineers, artificial intelligence developers, multimedia system and information technology consultants, mobile projects managers, wireless and mobile communication consultants, and managers and team leaders in the communications industry.



“I got to use fantastic equipment during my studies, including the High frequency Engineering Laboratory. This lab is equipped with State-of-the-art hardware and measurement facilities including an 6 x 4 x 3m pyramidal-cone anechoic chamber.”

REZA NEJAD SAFARI  
ALUMNUS  
DEPARTMENT OF EEE



# MSc

# SUSTAINABLE

# ENERGY

# TECHNOLOGY

## MSc SUSTAINABLE ENERGY TECHNOLOGY

The MSc Sustainable Energy Technology programme provides state-of-the-art education in the fields of sustainable energy generation, distribution and consumption. It is intended to respond to a growing skills shortage of engineers with a high level of training in renewable energy, smart grids and sustainability.

By the time you graduate, you will have a thorough understanding of sustainability standards, various renewable energies, smart grid and power electronics for renewable energy and energy use management in buildings, urban design and other areas. Research on sustainable energy technology has opened up many job opportunities in industry, government institutions and research centres.

Lab facilities include:

- a power electronics laboratory equipped with advanced experimental equipment
- a sustainable energy laboratory equipped with advanced experimental equipment including a 600W wind turbine, two 270W solar modules, batteries, an inverter with sinusoidal output and main controller
- an electric machine and power system laboratory

Graduates of this programme, as with all XJTLU masters degrees, earn a University of Liverpool degree that is recognised by the Chinese Ministry of Education.



SCAN THE QR CODE  
TO VISIT THE  
PROGRAMME  
WEBSITE

**PROGRAMME DIRECTOR**  
huiqing.wen@xjtlu.edu.cn

**GENERAL ENQUIRIES**  
pgenquiries@xjtlu.edu.cn

**APPLY**  
[www.xjtlu.edu.cn/en/find-a-programme/masters/msc-sustainable-energy-technology](http://www.xjtlu.edu.cn/en/find-a-programme/masters/msc-sustainable-energy-technology)

### MODULES

SUSTAINABLE ENERGY AND THE ENVIRONMENT

NUCLEAR ENERGY TECHNOLOGY

POWER SYSTEM NETWORK AND SMART GRIDS

INTEGRATION OF ENERGY STRATEGIES IN THE DESIGN OF BUILDINGS

PHOTOVOLTAIC ENERGY TECHNOLOGY

RENEWABLE KINETIC ENERGY TECHNOLOGIES

POWER ELECTRONICS AND APPLICATIONS FOR RENEWABLE ENERGY

SUSTAINABLE URBAN PLANNING STRATEGIES

DISSERTATION

### ADDITIONAL LEARNING ACTIVITIES

The completion of additional learning activities is required to obtain your masters degree. Normally, required ALA hours will be distributed evenly across each semester, amounting to 200 hours per semester. Part-time programmes will normally require 100 to 150 hours per semester.

### KNOWLEDGE AND SKILLS

By studying MSc Sustainable Energy Technology you will benefit from:

- studying at an international university recognised throughout the world
- close cooperation with world-famous universities and research centres to solve major technical challenges including energy crises and environmental pollution
- excellent research opportunities, using advanced experimental equipment including a network analyser, power analyser, Dspace controller, wind turbine and PV testing system
- continuous development of core modules to meet the requirements of industrial innovation
- cutting-edge research in the intelligent and efficient utilisation of solar, wind energy and other renewable energy sources.



### ACCREDITATION

This programme has been accredited by the Institution of Engineering and Technology (IET). IET is a leading professional organisation working to share and advance knowledge and promote science, engineering and technology across the world. Students graduating from this accredited programme can enjoy a more straightforward registration process for incorporated engineer (IEng) or chartered engineer (CEng) registration, important benchmarks professionally.



### CAREERS

Graduates of this programme will typically work on professional tasks including the implementation of sustainable energy technologies within existing or new systems, and modelling and evaluation of the impact on ecosystems, economics and society.

Graduates may be employed as electric power system engineers, electric power system consultants, electric power projects managers, sustainable cities and building design consultants, managers and team leaders in government.

“My module “Power Electronics and Applications for Renewable Energy” aims to give the you basic knowledge of the design and manner of operation of power electronic converters. You will gain a broad understanding of the vital role of power electronics in the power system, and how it may enhance energy saving, and also its connection with sustainable energy. Beside the lectures and tutorials, the mode of delivery of this module also includes 20 hours of laboratories which will be accomplished in our power electronics lab. Hence upon completing the module successfully you should have strong theoretical knowledge with practical skills.”

**Dr WEN LIU**  
LECTURER  
MSc SUSTAINABLE ENERGY TECHNOLOGY



## DEPARTMENT OF ENGLISH

The Department of English trains English-language professionals for careers in the fields of education, finance and business. Our graduates are highly sought after in domestic and international job markets and are well-prepared for employment in corporate communications, internet ventures, and, of course, education. Graduates are also well-positioned to excel in postgraduate studies in a variety of fields. Our learning environment enables students to adapt to western educational culture and to become lifelong learners. The innovative interdisciplinary design of each of our programmes prepares students for the range of opportunities and challenges they will meet in their future careers.





# MA

# MASS MEDIA

# TRANSLATION

## MA MASS MEDIA TRANSLATION

In the age of globalisation, media communication has become increasingly multilingual and multimodal. The rising need for translation is marked by a particular surge in demand for skills in translating for different media forms.

The MA Mass Media Translation programme aims to provide suitably qualified undergraduates an opportunity to procure a deeper understanding of mass media translation between English and Chinese, at both theoretical and practical levels, and to produce graduates capable of operating professionally and reflectively in this rapidly developing media translation environment.

The programme is intended for those who have good bilingual proficiency and are interested in media translation, for translation practitioners who want to gain a deeper understanding of media translation, and for others who wish to develop and extend their professional skills in media translation and bilingual media communication. It is also a stepping stone for any individual wanting to undertake a research degree in translation studies and media translation in particular.

Note: This programme is awaiting official recognition from the Ministry of Education of the People's Republic of China.



SCAN THE QR CODE  
TO VISIT THE  
PROGRAMME  
WEBSITE

**PROGRAMME DIRECTOR**  
[hui.wang@xjtlu.edu.cn](mailto:hui.wang@xjtlu.edu.cn)

**GENERAL ENQUIRIES**  
[pgenquiries@xjtlu.edu.cn](mailto:pgenquiries@xjtlu.edu.cn)

**APPLY**  
[www.xjtlu.edu.cn/en/find-a-programme/masters/ma-mass-media-translation](http://www.xjtlu.edu.cn/en/find-a-programme/masters/ma-mass-media-translation)

### DISTINCTIVE FEATURES

- The first MA masters programme in Mainland China specialised in media translation training and bilingual media communication
- Choose from a wide range of theoretical and practical modules
- Taught by academic staff members from translation and media and communication studies programmes, as well as other experts in the field

### MODULES

#### SEMESTER ONE

THEORY OF TRANSLATION STUDIES

JOURNALISM TRANSLATION

GLOBAL MEDIA CULTURES

CONTEMPORARY MEDIA THEORIES

TRANSLATION AND TECHNOLOGY

#### SEMESTER TWO

RESEARCH METHODS

PUBLIC RELATIONS TRANSLATION

PORTRAYAL OF CHINA IN WESTERN MEDIA

DISCOURSE ANALYSIS

AUDIO-VISUAL TRANSLATION

TRANSLATING CHINESE CULTURE

#### SEMESTER THREE

DISSERTATION

TRANSLATION PROJECT

### ADDITIONAL LEARNING ACTIVITIES

The completion of additional learning activities is required to obtain your masters degree. Normally, required ALA hours will be distributed evenly across each semester, amounting to 200 hours per semester. Part-time programmes will normally require 100 to 150 hours per semester.

ALAs may contain the following elements:

- Graduate teaching or research assistantship
- Discipline-related academic activities
- English/Chinese modules
- Work placements

### CAREERS

The MA in Mass Media Translation opens up a wide range of career paths for graduates. They may enter the profession as media translators or go on to further study in pursuit of a research career. An understanding of cross-cultural media communication and a mastery of English and Chinese prepares students for careers in the following sectors:

- government organisations
- media and journalism
- business sectors
- public relations
- editing and writing
- presenting and hosting
- teaching
- administration

Graduates will also find work in international environments where cross-cultural communication is needed.





# MA

# TESOL

POSTGRADUATE 2019

## MA TESOL

The MA TESOL programme will provide you with the opportunity to develop both a scholarly and practical understanding of the field of Teaching English to Speakers of Other Languages (TESOL). It is suitable for language teachers, teacher trainers, educational materials writers and test designers who wish to further develop their range of professional skills and knowledge.

Graduates of this programme, as with all XJTLU masters degrees, earn a University of Liverpool degree that is recognised by the Chinese Ministry of Education.

### KNOWLEDGE AND SKILLS

This programme will help you:

- gain an advanced critical understanding of key issues, theories and practices in the field of English language teaching
- acquire a sound knowledge and understanding of language in context
- explore the implications of language analysis for teaching purposes
- develop an understanding of current methodology as it is embodied in classroom practice
- engage with theories underlying current views on language learning, including the importance of individual differences amongst learners in their abilities and learning preferences
- appreciate and view critically the connections between theory and practice in the field of English language teaching
- foster the ability to conduct academic research



SCAN THE QR CODE  
TO VISIT THE  
PROGRAMME  
WEBSITE

**PROGRAMME DIRECTOR**  
[peng.ding@xjtlu.edu.cn](mailto:peng.ding@xjtlu.edu.cn)

**GENERAL ENQUIRIES**  
[pgenquiries@xjtlu.edu.cn](mailto:pgenquiries@xjtlu.edu.cn)

**APPLY**  
[www.xjtlu.edu.cn/en/find-a-programme/masters/ma-tesol](http://www.xjtlu.edu.cn/en/find-a-programme/masters/ma-tesol)

### MODULES

#### CORE MODULES

LINGUISTICS FOR LANGUAGE TEACHERS

METHODS IN ENGLISH LANGUAGE TEACHING

PRINCIPLES OF COURSE AND MATERIAL DESIGN

SECOND LANGUAGE ACQUISITION

LANGUAGE TESTING AND ASSESSMENT

SPEAKING AND LISTENING

RESEARCH METHODS

#### ELECTIVE MODULES

DISCOURSE ANALYSIS

LEXIS AND VOCABULARY TEACHING

ENGLISH FOR SPECIFIC PURPOSES

### ADDITIONAL LEARNING ACTIVITIES

The completion of additional learning activities is required to obtain your masters degree. Normally, required ALA hours will be distributed evenly across each semester, amounting to 200 hours per semester. Part-time programmes will normally require 100 to 150 hours per semester.

### CAREERS

Graduates may pursue TESOL as a new career or enhance their current prospects in the field of English language teaching. In China, a postgraduate qualification in TESOL is increasingly sought-after by educational institutions. Alternatively, the programme will facilitate the professional development of those candidates who are considering a career in publishing or materials development, and management positions.

The programme will also equip those interested in pursuing an academic career in the field of English language teaching and applied linguistics, by preparing them to conduct research at MPhil, MRes, EdD and PhD level.



Associate Professor Penny Ding has published across the inter-related areas of applied linguistics, ESL teacher and learner motivation, teacher enthusiasm, and English as the Medium of Instruction. She is a recipient of the Ministry of Education National Social Science Fund and has also won teaching awards from the Jiangsu Provincial Government. She teaches Second Language Acquisition and Research Methods on the MA TESOL program at XJTLU. She obtained her PhD from the University of Nottingham (UK) and was formerly a Lecturer at Beijing Foreign Studies University.

**Dr PENNY DING**  
PROGRAMME DIRECTOR  
MA TESOL



# XJTLU SCHOOL OF FILM AND TELEVISION ARTS

The School of Film and Television Arts mixes digital media arts and film and television production and technology with performance and acting. The School relies on the advantage of international art education and the resource of Gold Finance film and television industrial chain. Research and teaching within the school takes place in areas such as communications studies, media technology, media theory, film post production and CG effects. State-of-art facilities support both students in the practical application of the skills they learn and academic staff in their research work.





# MSc

# MEDIA AND

# COMMUNICATION

POSTGRADUATE 2019

## MSc MEDIA AND COMMUNICATION

The MSc Media and Communication programme aims to provide you with the opportunity to develop a deep understanding of the field of media and communication at theoretical and practical levels. The programme is intended for graduates from the fields of media and communication, the social sciences, advertising and public relations, for individuals already working in the media and trying to gain a more profound understanding of their field, and for others who want to develop and extend the range of their theoretical and professional media skills. It is also a stepping stone for any individual wanting to pursue a PhD in the media and communication field.

You will graduate with critical and theoretical knowledge of the contexts of communication studies in combination with the opportunity to develop practical skills in digital media production. Combined with the strong English language skills that studying at XJTLU gives, this produces graduates who will be very attractive to Chinese and international companies in an increasingly globalised workplace.

The school has a digital media laboratory with Apple iMac computers, Final Cut Pro X editing software and the Adobe suite of professional digital media production software, in addition to Sony high definition digital video production kits for short film-making, digital media and documentary production.

Graduates of this programme, as with all XJTLU masters degrees, earn a University of Liverpool degree that is recognised by the Chinese Ministry of Education.



SCAN THE QR CODE  
TO VISIT THE  
PROGRAMME  
WEBSITE

**PROGRAMME DIRECTOR**  
[holger.briel@xjtlu.edu.cn](mailto:holger.briel@xjtlu.edu.cn)

**GENERAL ENQUIRIES**  
[pgenquiries@xjtlu.edu.cn](mailto:pgenquiries@xjtlu.edu.cn)

**APPLY**  
[www.xjtlu.edu.cn/en/find-a-programme/masters/msc-media-and-communication](http://www.xjtlu.edu.cn/en/find-a-programme/masters/msc-media-and-communication)

### DISTINCTIVE FEATURES

By studying MSc Media and Communication you will benefit from:

- a unique combination of both media theory and practical training, something very few other masters programmes provide
- Additional Learning Activities that allow you the opportunity to work closely with top researchers and industry experts
- gaining a superb understanding of the Chinese and international media markets.

### MODULES

#### CORE MODULES

GLOBAL MEDIA CULTURES

CONTEMPORARY MEDIA THEORY

DIGITAL ETHICS

CONTEMPORARY CHINESE MEDIA ENVIRONMENT

RESEARCH METHODS IN COMMUNICATION

INTERACTIVE AND EMERGING TECHNOLOGIES

PRACTICAL SKILLS DEVELOPMENT

#### ELECTIVE MODULES

ADVERTISING AND PUBLIC RELATIONS

JOURNALISM RESEARCH

### ADDITIONAL LEARNING ACTIVITIES

The completion of additional learning activities is required to obtain your masters degree. Normally, required ALA hours will be distributed evenly across each semester, amounting to 200 hours per semester. Part-time programmes will normally require 100 to 150 hours per semester.

### CAREERS

MSc Media and Communication graduates can enjoy careers in top international and Chinese media companies specialising in public relations, advertising and digital media amongst others.

### KNOWLEDGE AND SKILLS

The MSc Media and Communication programme will:

- give you an advanced critical understanding of key issues, concepts and theories and the relationship between theory and practice in the fields of media and communication
- instil a sound knowledge and understanding of media language and its iterations on different media platforms
- encourage your exploration of the implications of media analysis for work purposes
- help you develop an understanding of current methodology as it is embodied in media and communication practices
- encourage you to engage with theories underlying current views on communicative practices, including the importance of global and local media manifestations
- help you engage with and critically appreciate the connections between theory and practice in the field of media and communication
- foster your research skills and techniques
- provide hands-on expertise through practical modules and a work placement.

In addition, the programme provides an overview of the contemporary theoretical, methodological, practical and ethical principles that underpin research in the field of media and communication and develops your skills, knowledge and understanding further in the theory and practice of applied media work.

"I graduated from a Chinese university previously and the whole experience of being on an international campus has been quite different. We have access to so many resources and a wealth of knowledge from our professors who come from all over the world. Being in China there are so many opportunities in different fields. I'd like to work in event planning as I have some experience with that already and I enjoy it."

**KRYSTAL SOROKA**  
STUDENT  
MSc MEDIA AND COMMUNICATION, THE BAHAMAS



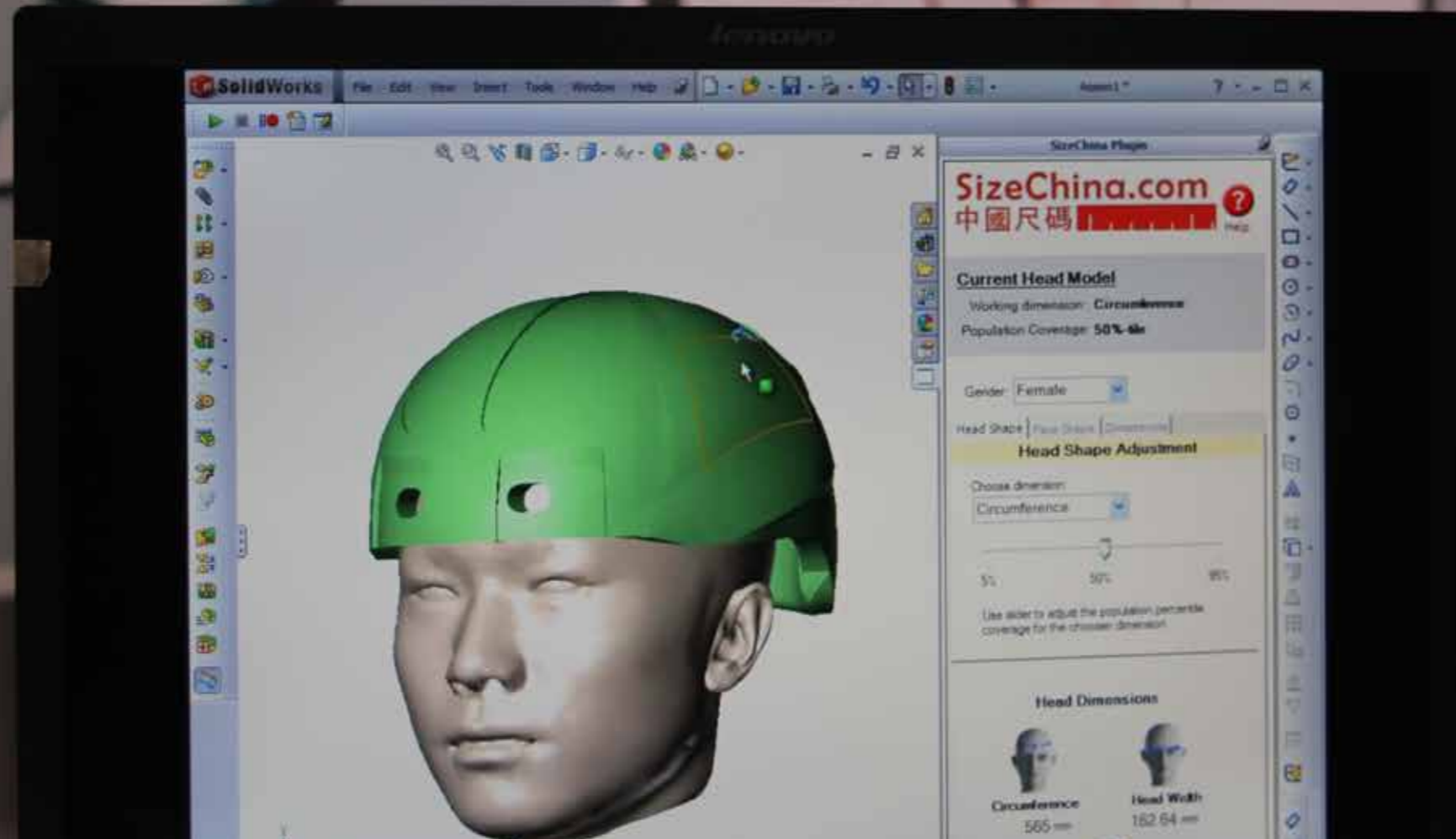
XJTLU

POSTGRADUATE 2019



# DEPARTMENT OF INDUSTRIAL DESIGN

The Department of Industrial Design focusses on user-centred product and systems design for society in response to social, cultural and technical context. We endeavour to educate a new generation of industrial and product designers who are able to understand and participate in China's ongoing social, cultural, and economic transformation through achieving a balance of creative and technical knowledge and competencies.





# MDes

# INDUSTRIAL

# DESIGN

POSTGRADUATE

## MDes INDUSTRIAL DESIGN

Growth in China will redefine patterns of consumption, production, and cultural appropriation domestically and globally for generations to come. As China-based companies shift to a designed-in-China strategy and international companies seek to design for the Chinese market, career opportunities for graduates of this programme will be numerous.

The MDes Industrial Design programme is for graduates or professionals with design or engineering backgrounds, who want to broaden and deepen their design and design research thinking. You will develop an appreciation for – and practice transdisciplinary approaches towards – design solutions, including products, interactions, systems, and services. Options are available for part-time study for working professionals.

During this programme, you will develop individual specialist skills while maintaining a generalist, transdisciplinary outlook towards design. During the first semester of this programme, you will advance your competencies in design research methods, transdisciplinary design tools, innovation processes, and design visualisation and communication. In the following two semesters, you will be supervised by academic staff to develop and carry out your own design research project.

Graduates of this programme, as with all XJTU masters degrees, earn a University of Liverpool degree that is recognised by the Chinese Ministry of Education.



SCAN THE QR CODE  
TO VISIT THE  
PROGRAMME  
WEBSITE

**PROGRAMME DIRECTOR**  
[ch.lo@xjtlu.edu.cn](mailto:ch.lo@xjtlu.edu.cn)

**GENERAL ENQUIRIES**  
[pgenquiries@xjtlu.edu.cn](mailto:pgenquiries@xjtlu.edu.cn)

**APPLY**  
[www.xjtlu.edu.cn/en/find-a-programme/masters/mdes-industrial-design](http://www.xjtlu.edu.cn/en/find-a-programme/masters/mdes-industrial-design)

### DISTINCTIVE FEATURES

- Exchange/visit opportunities to UoL's Liverpool and London campuses.
- Internships/collaborations through the Department of Industrial Design's strong network with international institutions and companies.
- A diverse programme that supports and facilitates a wide range of design specialties and representations.

### MODULES

FRAMING DESIGN RESEARCH

METHODS FOR TRANSDISCIPLINARY DESIGN

INNOVATION BY DESIGN

ADVANCED DESIGN VISUALISATION AND COMMUNICATION

DESIGN RESEARCH PROJECT (OVER TWO SEMESTERS).

### ADDITIONAL LEARNING ACTIVITIES

The completion of Additional Learning Activities (ALA) is required to obtain your masters degree. Normally, required ALA hours will be distributed evenly across each semester, amounting to 200 hours per semester. Part-time programmes will normally require 100 to 150 hours per semester.

### KNOWLEDGE AND SKILLS

You will be encouraged to take advantage of the transdisciplinary nature of this programme, with an emphasis on development and evaluation of new investigative methods and approaches. In addition to the academic modules, you can use Additional Learning Activities (ALA) to enhance relevant skills and pursue your interests e.g. in design software, cultural appreciation, research, teaching, internship and more. Your final projects can have an academic emphasis to prepare for doctoral study or be based on a more applied, industry-focussed agenda.

### CAREERS

The MDes Industrial Design programme offers you a solid foundation for careers such as design practitioners and design managers, as well as for further studies on design-related PhD programmes.

THE XJTU  
DESIGN BUILDING





# DEPARTMENT OF MATHEMATICAL SCIENCES

The Department of Mathematical Sciences has a strong reputation for student achievement and success. Our academic staff are internationally recognised for their high-quality research in a number of areas of modern mathematics. The mathematical and computational sciences are among the major research strengths of XJTLU, and our department is strongly committed to excellence in research and teaching.

The study of mathematics goes well beyond the improvement of a student's numeracy skills; it emphasises the development of strong analytical decision-making, modelling and forward-thinking skills as well as the importance of logical reasoning. Such skills are essential in many domains and are highly regarded by employers. For this reason, a degree in mathematics is held in high esteem in many other professional fields providing opportunities to pursue a multitude of careers.

## ACADEMIC STAFF

Our staff members create a truly international environment that is welcoming to students from all backgrounds. Through research-led teaching, we bring you in contact with the latest developments and ideas in our fields of research and prepare you for the competitive job market.

## RESEARCH

Our research interests cover a wide range of mathematical problems including financial mathematics, pricing of financial derivatives, risk estimation, modern analyses, partial differential equations, biomathematics, discrete mathematics, fluid flows, dynamical systems, numerical methods, statistics and probability.

## LEARNING AND TEACHING

Our mathematical sciences programmes are delivered through a combination of formal lectures, tutorials, guided reading, private study, and both supervised and unsupervised practical work which includes mathematical workshop practices as well as more involved projects. In researching your dissertation, you gain skills and experience which will be valuable to your future career. In undertaking your own research, you will become an independent thinker who can efficiently and effectively work on challenging problems.



# MSc

# FINANCIAL

# MATHEMATICS

POSTGRADUATE 2019

## MSc FINANCIAL MATHEMATICS

The MSc Financial Mathematics programme provides you with advanced analytical training, quantitative knowledge and the practical skill sets required by modern financial institutions. It aims to equip you with a solid education in financial analysis, risk management and financial engineering for a successful career in the finance and banking industries. It is heavily weighted towards advanced mathematics and programming modules designed with practical applications in mathematical and quantitative finance.

Graduates of this programme, as with all XJTLU masters degrees, earn a University of Liverpool degree that is recognised by the Chinese Ministry of Education.

### DISTINCTIVE FEATURES

The programme keeps a balance between theoretical and practical knowledge which is crucial for a successful career in the financial industry. Upon successful completion of the programme the students gain important skills in computational and theoretical aspects of finance. They will have extensive experience in working with financial data and with terminals such as the Wind Financial Terminal that provides data on the Chinese market.

Through our industry network and connections we support the students' career development via internship opportunities and organise various events to improve networking activities with the financial industry. Overall, given the career prospects and skills acquired the programme offers an excellent and unique opportunity for successful candidates.



SCAN THE QR CODE  
TO VISIT THE  
PROGRAMME  
WEBSITE

**PROGRAMME DIRECTOR**  
[rachid.belhachemi@xjtlu.edu.cn](mailto:rachid.belhachemi@xjtlu.edu.cn)

**GENERAL ENQUIRIES**  
[pgenquiries@xjtlu.edu.cn](mailto:pgenquiries@xjtlu.edu.cn)

**APPLY**  
[www.xjtlu.edu.cn/en/find-a-programme/masters/msc-financial-mathematics](http://www.xjtlu.edu.cn/en/find-a-programme/masters/msc-financial-mathematics)

Through our industry network and connections we support the students' career development via internship opportunities and organise various events to improve networking activities with the financial industry. Overall, given the career prospects and skills acquired the programme offers an excellent and unique opportunity for successful candidates.

### MODULES

#### CORE MODULES

COMPUTATIONAL METHODS IN FINANCE I

INTRODUCTION TO PRICING AND HEDGING

FINANCIAL ECONOMETRICS

FIXED INCOME SECURITIES

STATISTICAL METHODS IN FINANCE

ARBITRAGE, EQUILIBRIUM AND PRICING

DISSERTATION.

#### ELECTIVE MODULES

PORTFOLIO THEORY AND RISK MANAGEMENT

COMPUTATIONAL METHODS IN FINANCE II

ADVANCED FINANCIAL RISK MANAGEMENT.

### ADDITIONAL LEARNING ACTIVITIES

The completion of additional learning activities is required to obtain your masters degree. Normally, required ALA hours will be distributed evenly across each semester, amounting to 200 hours per semester. Part-time programmes will normally require 100 to 150 hours per semester.

### KNOWLEDGE AND SKILLS

The MSc Financial Mathematics programme will equip you with:

- intellectual skills and theoretical understanding appropriate for the study of financial mathematics and quantitative analysis at postgraduate level
- practical mathematics and object-oriented programming skills linking finance theories to real-world application
- skills in research, evaluation and analysis and the quantitative techniques to evaluate and interpret complex data and research literature
- skills and abilities to devise, plan and undertake complex research projects in the field of financial mathematics.

### CAREERS

A postgraduate degree in financial mathematics gives you many employment opportunities in the business world such as in banks, investment firms, insurance companies, consulting services to the financial industry, government regulation agencies and businesses.

You could also conduct teaching and research at universities, research institutions or government departments.

"The MSc Financial Mathematics provides students with the skills and knowledge for careers in financial institutions. To support this, the department has also developed an interdisciplinary research collaboration through the establishment of the Institute for Quantitative Finance. This includes establishing projects with industry players and organising various events in the field of quantitative finance. Our mission is to improve the research environment at XJTLU in quantitative finance and contribute to the development of financial markets in China."

**Dr GANG LIU**  
ASSOCIATE PROFESSOR  
DEPARTMENT OF MATHEMATICAL SCIENCES



XJTLU

POSTGRADUATE 2019



An aerial photograph of a modern cityscape, likely Suzhou, China, featuring a prominent river, several bridges, and a mix of high-rise buildings and lower-rise structures. The scene is captured from an elevated perspective, showing the layout of the city and its proximity to water.

## DEPARTMENT OF URBAN PLANNING AND DESIGN

The Department of Urban Planning and Design is a dynamic and international department that combines the best of urban planning and design theory, with the specifics of practice in the rapidly urbanising Chinese environment. Owing to XJTU's unique location and education system, this department provides students one of the most fascinating urban planning environments in the world.

Students studying urban planning and design develop understanding of the processes of spatial change in the built and natural environments and engage the arguments for intervening in these processes. Students develop the knowledge and skills to analyse, critique and ultimately contribute to the sustainability of urban and rural development both in China and around the world.

As the size of the human population increases, cities now need to respond to a range of complex urban phenomena including rapid expansion and urban shrinkage. These complex issues demand more sophisticated solutions in order to achieve sustainable development.

Our connections to the Departments of Architecture, Civil Engineering, Environmental Science, Electrical Engineering, and International Business School Suzhou, among others, enables us to foster the interdisciplinary enquiry essential for good urban planning and design.

### ACADEMIC STAFF

Our international and interdisciplinary mix of academic staff with their wide range of professional and academic experience, creates a lively intellectual atmosphere that nourishes staff and students alike. At XJTU, students are encouraged to join our community and enter into the debate about how to make cities better.



MSc

URBAN

PLANNING

(SPECIALISATION

IN URBAN DESIGN)

## MSc URBAN PLANNING (SPECIALISATION IN URBAN DESIGN)

The MSc Urban Planning (specialisation in Urban Design) programme allows you to engage in the complex issues of urban space production in a dynamic Chinese context. It considers the interplay between spatial design and social, economic, environmental and political issues evident in a range of urban settings. It is taught across the Departments of Architecture, and Urban Planning and Design to ensure that you receive an interdisciplinary perspective on the development of urban form.

The programme is not limited to those with architecture or urban planning backgrounds, rather it is relevant for all interested in understanding the nature and production of spaces. First-class international teaching staff bring with them the best learning methods from some of the most prestigious universities in the world. They offer varied perspectives on Urban Design as a truly interdisciplinary programme.

Graduates of this programme, as with all XJTLU masters degrees, earn a University of Liverpool degree that is recognised by the Chinese Ministry of Education.

Note: This programme is awaiting official recognition from the Ministry of Education of the People's Republic of China.



SCAN THE QR CODE  
TO VISIT THE  
PROGRAMME  
WEBSITE

**PROGRAMME DIRECTOR**  
[christian.nolf@xjtlu.edu.cn](mailto:christian.nolf@xjtlu.edu.cn)

**GENERAL ENQUIRIES**  
[pgenquiries@xjtlu.edu.cn](mailto:pgenquiries@xjtlu.edu.cn)

**APPLY**  
[www.xjtlu.edu.cn/en/find-a-programme/masters/msc-urban-design](http://www.xjtlu.edu.cn/en/find-a-programme/masters/msc-urban-design)

### KNOWLEDGE AND SKILLS

The MSc Urban Planning (specialisation in Urban Design) programme equips future urban designers with critical and creative thinking, as well as communication and interdisciplinary skills. For the design skills in particular: spatial analysis, representation (mapping, models), and conceptualisation (such as scenario-and vision-making).

### DISTINCTIVE FEATURES

The MSc Urban Planning (specialisation in Urban Design) programme is unique because it combines two things: on the one hand, a first-class international teaching staff bring with them the best learning methods from some of the most prestigious universities in the world; on the other hand, the Suzhou-Shanghai region is one of the most exciting environments in which to learn about and experiment with urban design in the 21st century.

### MODULES

#### CORE MODULES

FUNDAMENTALS OF URBAN DESIGN

PLACE-MAKING AND URBAN DESIGN (STUDIO)

ARCHITECTURAL THEORY AND CRITICISM

URBAN DESIGN INQUIRY (STUDIO)

SUSTAINABLE URBAN PLANNING STRATEGIES

DISSERTATION

#### ELECTIVE MODULES

SPATIAL ANALYSIS AND VISUALISATION

THEORY AND PRACTICE OF URBAN REGENERATION

POLITICS, SOCIETY AND PARTICIPATION

TOPICS IN ARCHITECTURAL HISTORY

HERITAGE, HISTORIC DISTRICTS, AND CONSERVATION

### ADDITIONAL LEARNING ACTIVITIES

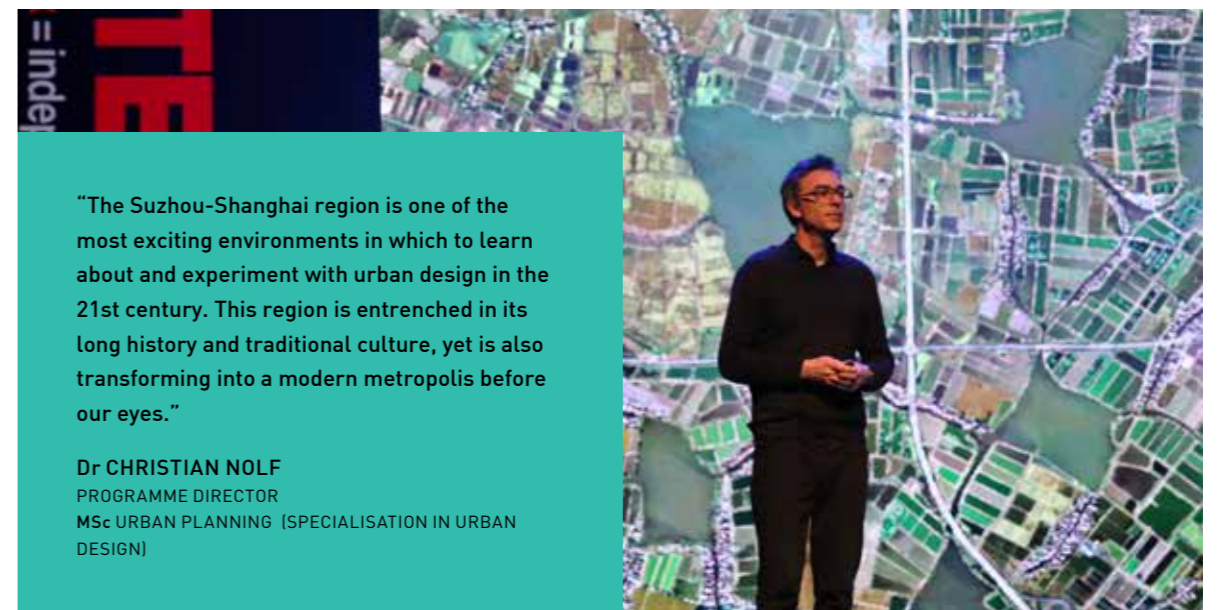
The completion of additional learning activities is required to obtain your masters degree. Normally, required ALA hours will be distributed evenly across each semester, amounting to 200 hours per semester. Part-time programmes will normally require 100 to 150 hours per semester.

### CAREERS

Urban designers are increasingly sought after in both public and private sector companies related to the built environment. They are particularly appreciated for their creative, communication and interdisciplinary skills.

Graduates of this programme can expect to pursue careers as urban or regional planners, developing plans for the use of land, helping to create communities, accommodate population growth, and regenerate facilities in urban areas.

China's fast-paced development means that opportunities for graduates with urban design knowledge will be plentiful.



"The Suzhou-Shanghai region is one of the most exciting environments in which to learn about and experiment with urban design in the 21st century. This region is entrenched in its long history and traditional culture, yet is also transforming into a modern metropolis before our eyes."

**Dr CHRISTIAN NOLF**  
PROGRAMME DIRECTOR  
MSc URBAN PLANNING (SPECIALISATION IN URBAN DESIGN)



# MSC URBAN PLANNING

## MSc URBAN PLANNING

The MSc Urban Planning programme, offered by the Department of Urban Planning and Design at XJTLU, provides you with an international grounding in urban planning that is centred on the theme of urban regeneration.

China is experiencing unprecedented urbanisation in terms of the speed and nature of growth. One of the key issues for future practitioners will be how to deal with the challenge of reusing, transforming and regenerating the existing urban fabrics of China's megacities in order to achieve a more sustainable model of urbanisation.

The programme suits students from a range of different backgrounds and it is not limited to those who have undertaken an urban planning undergraduate degree. One of the aims of the programme is to offer a multidisciplinary perspective on the issue of urban regeneration. Staff teaching on the programme offer varying expertise from a range of disciplines including urban planning and design, project management, policy design and geography. In addition, staff offer a variety of international perspectives including those anchored in Western European, East Asian and North American theoretical debates.

Graduates of this programme, as with all XJTLU masters degrees, earn a University of Liverpool degree that is recognised by the Chinese Ministry of Education.



SCAN THE QR CODE  
TO VISIT THE  
PROGRAMME  
WEBSITE

**PROGRAMME DIRECTOR**  
[sheng.zhong@xjtlu.edu.cn](mailto:sheng.zhong@xjtlu.edu.cn)

**GENERAL ENQUIRIES**  
[pgenquiries@xjtlu.edu.cn](mailto:pgenquiries@xjtlu.edu.cn)

**APPLY**  
[www.xjtlu.edu.cn/en/find-a-programme/masters/msc-urban-planning](http://www.xjtlu.edu.cn/en/find-a-programme/masters/msc-urban-planning)

### DISTINCTIVE FEATURES

The regeneration of existing urban areas will lead China's urbanisation process in the years to come. The MSc Urban Planning programme is particularly designed to help future planners comprehensively tackle urban regeneration problems in diverse contexts. The city of Suzhou, which blends history and modernity, is an ideal place to explore Chinese contemporary cities and planning practices.

### MODULES

#### CORE MODULES

THEORY AND PRACTICE OF URBAN REGENERATION

GOVERNANCE AND FINANCE OF URBAN REGENERATION

POLITICS, SOCIETY, AND PARTICIPATION

PLACE-MAKING AND URBAN DESIGN

SPATIAL ANALYSIS AND EVALUATION

SUSTAINABLE URBAN PLANNING STRATEGIES

HERITAGE, HISTORIC DISTRICTS, AND CONSERVATION

FUNDAMENTALS OF PROJECT MANAGEMENT

DISSERTATION

### ADDITIONAL LEARNING ACTIVITIES

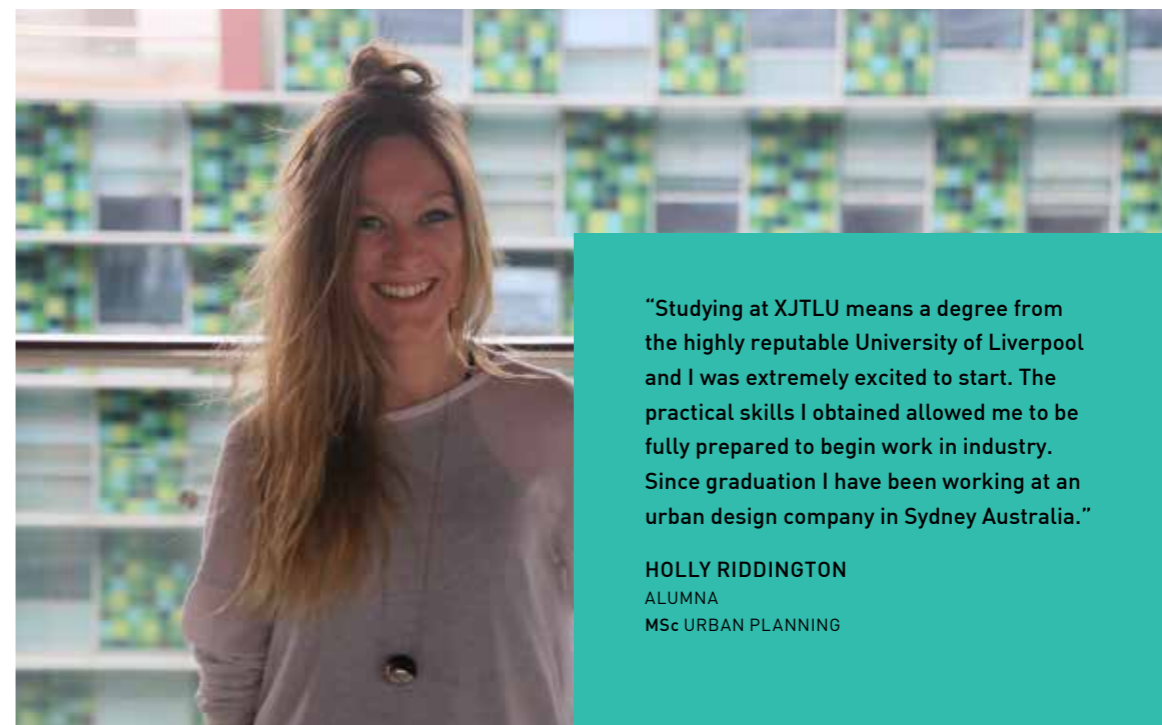
The completion of additional learning activities is required to obtain your masters degree. Normally, required ALA hours will be distributed evenly across each semester, amounting to 200 hours per semester.

### KNOWLEDGE AND SKILLS

Throughout this programme, you will be introduced to theories and techniques that will allow you to approach urban planning in a critical, communicative and people-oriented way. Students graduate with a comprehensive understanding of contemporary urban problems and possible planning responses, as well as a mastery of the techniques and procedural skills necessary for effective work in the planning profession.

### CAREERS

The MSc Urban Planning programme provides a solid basis for a range of careers across the world. These include but are not limited to urban planning, policy development, urban design, property development, working with community groups as an advocate to give them a voice in built environment decision-making processes, working with local and central government and working with non-governmental organisations.



"Studying at XJTLU means a degree from the highly reputable University of Liverpool and I was extremely excited to start. The practical skills I obtained allowed me to be fully prepared to begin work in industry. Since graduation I have been working at an urban design company in Sydney Australia."

**HOLLY RIDDINGTON**  
ALUMNA  
MSc URBAN PLANNING



# INSTITUTE OF LEADERSHIP AND EDUCATION ADVANCED DEVELOPMENT

The Institute of Leadership and Education Advanced Development aims to promote XJTLU's explorations into new models of education and to expand the social influence of the University. ILEAD carries out distinctive and high-level research in terms of leadership and education and hosts the Leadership Excellence Programme and the Teaching Staff Training course, helping XJTLU, and other institutions at all levels both domestic and overseas, to exploit new models of education that meets the demands of the new era.





# MA

# GLOBAL

# EDUCATION

## MA GLOBAL EDUCATION

With an increasingly mobile and globally connected population, the world is rapidly changing and facing many challenges. Education is increasingly borderless, and with this comes the challenge of ensuring quality. There is increasing demand for appropriately trained professionals with an understanding of the challenges faced by education and globalisation as they interact together.

The Masters of Global Education uniquely provides in-depth knowledge, skills and understanding through both practice and theory-based modules, enabling its graduates to make an important future contribution to shaping tomorrow's global education needs.

Note: This programme is awaiting official recognition from the Ministry of Education of the People's Republic of China.

### DISTINCTIVE FEATURES

- Internship in a global education environment
- Possibility of gaining teaching experience
- Unique programme in China
- Combines expertise from the UK and China
- Some exemptions from modules in the XJTLU Postgraduate Certificate in Professional Studies programme

### MODULES

#### SEMESTER ONE

GLOBALISATION AND EDUCATION: CRITICAL PERSPECTIVES

PRINCIPLES, POLICIES AND PRACTICES OF GLOBAL EDUCATION

EDUCATIONAL LEADERSHIP

CULTURE AND LEARNING

#### SEMESTER TWO

ENTREPRENEURSHIP, EDUCATIONAL INNOVATION AND INTERNATIONAL EDUCATION

THE UNIVERSITY OF TOMORROW: MANAGING CHANGE IN GLOBAL HE

LANGUAGE AND POWER

INTERNSHIP

#### SEMESTER THREE

DISSERTATION

### ADDITIONAL LEARNING ACTIVITIES

The completion of additional learning activity is required to complete your masters degree. Normally, required ALA hours will be distributed evenly across each semester, amounting to 200 hours per semester. Part-time programmes will normally require 100 to 150 hours per semester.

ALAs may contain the following elements:

- Research Methods (Compulsory)
- Academic Writing (Compulsory)
- Other Education-related modules within XJTLU
- BA International Relations modules, Year 4
- EMI Short course (delivered by ILEAD)
- Chinese Language (for international students)
- Understanding China (compulsory for international students)

### KNOWLEDGE AND SKILLS

Students will acquire comprehensive knowledge, drawing on international contexts and perspectives, of the key debates and issues surrounding the development of global education today. This course will enable students to critically reflect on their own educational roles, where appropriate, and acquire the necessary skills and networks to forge a career in global education. International students will have the opportunity to either learn or improve their Chinese language skills.

### CAREERS

Graduates will be prepared for careers in local higher education institutions engaging in change, delivery of EMI programmes, joint venture schools/higher education institutions, government agencies, non-profit organisations who need professionals with a comprehensive knowledge of today's global education landscape. The ability to communicate in Chinese (for international students) will also enhance career prospects.



SCAN THE QR CODE  
TO VISIT THE  
PROGRAMME  
WEBSITE

PROGRAMME DIRECTOR  
[stuart.perrin@xjtlu.edu.cn](mailto:stuart.perrin@xjtlu.edu.cn)

GENERAL ENQUIRIES  
[pgenquiries@xjtlu.edu.cn](mailto:pgenquiries@xjtlu.edu.cn)

APPLY  
<http://www.xjtlu.edu.cn/en/find-a-programme/masters/global-education>



# INTERNATIONAL BUSINESS SCHOOL SUZHOU

IBSS is built on the strengths inherited from XJTLU's parent universities, the University of Liverpool in the UK and Xi'an Jiaotong University in China, to provide our students with a world class international business education.

Our School is based on the principles of internationalism, innovation, inspiration and integrity, which together ensure that we have a positive impact on society through our teaching, research and business engagement.

With leading international staff and a superb location in the heart of Suzhou Industrial Park close to other major commercial centres such as Shanghai and Wuxi, we enjoy ideal conditions for beneficial mutual exchange between business and academia. This underpins a learning and teaching environment that ensures our students graduate with the knowledge and skills needed to succeed in an ever-changing world.





# MSc

# BUSINESS

# ANALYTICS

## MSc BUSINESS ANALYTICS

The rapid growth of available data is transforming the way managers, accountants, investors and marketers are working. The ability to integrate big data into their analyses, business plans and decisions is becoming essential if firms are to maintain their competitive advantage.

The MSc Business Analytics programme is a response to these changes in the economic and technological environment. It aims to transform business students into multi-talented professionals, standing in-between their core field of expertise (such as management, finance, and marketing) and information technologies.

In addition to advanced modules in finance, marketing and management, the programme offers a in-depth understanding of the most up-to-date methods for data-processing (such as machine learning, data mining) and data management. Our teaching philosophy is practice-oriented. With this in mind, after an intensive 12-month period of study you will have the opportunity to complete your training with a six-month internship within a company.

You will benefit from the Big Data Analytics and Technology Centre that has been set up at XJTU in collaboration with IBM and the Suzhou International Science-Park Data Centre (SISDC). Business analytics training will be available, utilising IBM software, and you will have the opportunity to apply for internships at big data companies in Suzhou or Shanghai.

Graduates of this programme, as with all XJTU masters degrees, earn a University of Liverpool degree that is recognised by the Chinese Ministry of Education.



SCAN THE QR CODE  
TO VISIT THE  
PROGRAMME  
WEBSITE

**PROGRAMME DIRECTOR**  
[gergerly.horvath@xjtu.edu.cn](mailto:gergerly.horvath@xjtu.edu.cn)

**GENERAL ENQUIRIES**  
[pgenquiries@xjtu.edu.cn](mailto:pgenquiries@xjtu.edu.cn)

**APPLY**  
[www.xjtu.edu.cn/en/find-a-programme/masters/msc-business-analytics](http://www.xjtu.edu.cn/en/find-a-programme/masters/msc-business-analytics)

International Business School Suzhou (IBSS) is one of an elite group of institutions worldwide to be accredited by the AACSB (Association to Advance Collegiate Schools of Business) and EQUIS (European Quality Improvement System) in 2016 and 2018 respectively. AACSB accreditation is a globally recognised standard for the highest quality in business education. Only five per cent of business schools worldwide have been awarded the accreditation. The EQUIS accreditation is a quality certification system for business schools set up by the EFMD (European Foundation for Management Development). It has become the most global authoritative and select business school certification body in the world with its comprehensive and rigorous review process. IBSS becomes the youngest business school in the world to have received both EQUIS and AACSB accreditation. There are only less than 100 business schools that have received both AACSB and EQUIS accreditation. This is an important milestone in becoming a world class business school and highlights the strength and significant influence of IBSS at the international level.

### DISTINCTIVE FEATURES

- Access the Big Data Analytics and Technology Centre
- Acquire skills of practical processing and exploration of big data
- Learn about some of the latest data analysis techniques making use of AI, such as machine learning and data mining
- Have opportunities to complete internships
- Take advantage of industry links with local companies

### MODULES

INTRODUCTION TO BUSINESS ANALYTICS  
CONTEMPORARY ISSUES IN THE ETHICS OF BUSINESS ANALYTICS  
ECONOMETRICS  
DATABASES AND DATA MANAGEMENT  
DATA MINING AND MACHINE LEARNING  
SOCIAL NETWORK ANALYSIS  
BIG DATA: APPLICATIONS IN BUSINESS  
INTERNSHIP REPORT/DISSERTATION.

Specialised pathway modules

FINANCE PATHWAY: FINANCIAL ANALYSIS, PORTFOLIO MANAGEMENT

MARKETING PATHWAY: SOCIAL MEDIA MARKETING, MARKETING MANAGEMENT

MANAGEMENT PATHWAY: STRATEGIC BUSINESS ANALYSIS, STRATEGIC OPERATION MANAGEMENT, MODELLING AND SIMULATION OF OPERATIONS.

### ADDITIONAL LEARNING ACTIVITIES

The completion of additional learning activities is required to obtain your Masters degree. Normally, required ALA hours will be distributed evenly across each semester, amounting to 200 hours per semester. Part-time programmes will normally require 100 to 150 hours per semester.

### KNOWLEDGE AND SKILLS

The MSc Business Analytics programme will equip you with:

- A rich understanding of the opportunities and threats posed to organisations by the current increase in data availability
- An ability to analyse, model and investigate large networks of peoples and companies.
- An appreciation of the ethical issues and risks related to the advent of interconnected databases
- Knowledge and understanding of current practices, theories and issues in a traditional field of business studies
- Skills in data processing (descriptive statistics, econometrics and machine learning), problem solving and decision-making (using statistical and data analyses to resolve organisational problems)
- Proficiency in the use of a wide variety of statistical packages suitable for analysing large data sets.

### CAREERS

Business analytics skills are in high demand in every sector of the economy, particularly within the fast-growing service sectors (e.g. finance, retail, marketing, and information technology). The typical positions our graduates target include data or information analyst, technical consultant, IT-related project manager and customer relationship management (CRM) analyst.



# MSc

# ECONOMICS

# AND FINANCE

## MSc ECONOMICS AND FINANCE

The MSc Economics and Finance programme combines a solid foundation in economic theory and applied econometrics with the study of finance. The study of financial microeconomics and macroeconomics will help you to understand complex issues related to financial decision-making while econometrics will provide the necessary tools to perform rigorous research in applied economics and finance. In addition, finance modules included in this programme cover a wide range of subjects related to portfolio theory, corporate finance, investment and strategy, and derivative instruments.

International Business School Suzhou attracts self-motivated students who are interested in a programme related to economics and specialising in finance. Students considering applying for this programme should have some prior learning in quantitative methods, statistics or econometrics, especially students with a bachelors degree that is not in economics or finance.

Graduates of this programme, as with all XJTLU masters degrees, earn a University of Liverpool degree that is recognised by the Chinese Ministry of Education. International Business School Suzhou (IBSS) is one of an elite group of institutions worldwide to be accredited by the AACSB (Association to Advance Collegiate Schools of Business) and EQUIS (European Quality Improvement System) in 2016 and 2018 respectively. AACSB accreditation is a globally recognised standard for the highest quality in business education. Only five per cent of business schools worldwide have been



SCAN THE QR CODE  
TO VISIT THE  
PROGRAMME  
WEBSITE

**PROGRAMME DIRECTOR**  
[marek.hudik@xjtlu.edu.cn](mailto:marek.hudik@xjtlu.edu.cn)

**GENERAL ENQUIRIES**  
[pgenquiries@xjtlu.edu.cn](mailto:pgenquiries@xjtlu.edu.cn)

**APPLY**  
[www.xjtlu.edu.cn/en/find-a-programme/masters/msc-economics-and-finance](http://www.xjtlu.edu.cn/en/find-a-programme/masters/msc-economics-and-finance)

awarded the accreditation. The EQUIS accreditation is a quality certification system for business schools set up by the EFMD (European Foundation for Management Development). It has become the most global authoritative and select business school certification body in the world with its comprehensive and rigorous review process. IBSS becomes the youngest business school in the world to have received both EQUIS and AACSB accreditation. There are only less than 100 business schools that have received both AACSB and EQUIS accreditation. This is an important milestone in becoming a world class business school and highlights the strength and significant influence of IBSS at the international level.

### DISTINCTIVE FEATURES

The MSc Economics and Finance programme effectively combines economic theory and applied econometrics with the study of finance. Our graduates become experts in using modern research tools to analyze economic, financial, social, and political environment.

Enhanced employment prospects:

- Develop both economics and finance skills
- Connect with industry through internship opportunities
- Build a solid foundation for PhD studies in economics and related fields.

The IBSS Financial Lab and Trading Floor:

- Gives access to a world of data for study and research
- Includes data feeds from Datastream and Thomson One
- Provides training by Thomson Reuters staff on EIKON system, leading to a TR EIKON training certificate.

### MODULES

#### COMPULSORY MODULES

FINANCIAL ECONOMICS

ECONOMETRICS

MACROECONOMIC THEORY

TIME SERIES ANALYSIS

INTERNATIONAL FINANCE AND ECONOMICS

ECONOMICS AND FINANCE DISSERTATION.

#### OPTIONAL MODULES

ADVANCED DERIVATIVES

MONEY AND BANKING

MICROECONOMIC THEORY

ADVANCED CORPORATE FINANCE

ADVANCED INVESTMENT

ALTERNATIVE INVESTMENTS AND STRATEGIES

FIXED INCOME AND DERIVATIVE INSTRUMENTS.

### ADDITIONAL LEARNING ACTIVITIES

The completion of additional learning activities is required to obtain your masters degree. Normally, required ALA hours will be distributed evenly across each semester, amounting to 200 hours per semester. Part-time programmes will normally require 100 to 150 hours per semester. Part-time programmes will normally require 100 to 150 hours per semester.

### KNOWLEDGE AND SKILLS

The MSc Economics and Finance programme will equip you with:

- Knowledge and understanding of core and advanced principles, theories and models relevant to finance and financial management
- The ability to explain, understand and apply statistical and econometric techniques and their application to the analysis of financial information and data
- An understanding of portfolio selection, risk and risk management, and the macroeconomic context of international financial transactions
- Skills in creative and critical thinking, problem-solving, data collection and analysis, and report writing.

### CAREERS

The MSc Economics and Finance programme is designed to give you an advantage when pursuing career opportunities in the financial sector, and with central banks and other monetary financial institutions, international organisations, academia and research institutions. Since it has a strong foundation in economics, it is also attractive to students who may have an interest in the wider business sector, especially within multinational enterprises. Examples of such positions include:

- Portfolio manager
- Investment strategy analyst
- Director of research
- Market risk analyst
- Head of investor relations
- Senior economist
- Industrial economist.

The programme is also well-suited for the students who would like to continue to PhD level.



# MSc

# FINANCE

POSTGRADUATE 2019

## MSc FINANCE

The MSc Finance programme is research-oriented, with emphasis on providing you with the tools to solve the practical financial problems that will create value for companies and enable societies to evolve.

You will gain wide theoretical knowledge in both corporate finance and asset pricing as well as the quantitative skills that will allow you to conduct research and analyse real-world problems. The study of financial economics and banking will allow you to excel in both the finance and economics fields. Contemporary topics are integrated throughout the programme in order to better understand human behaviour in financial markets.

Throughout the programme, traditional academic modules alternate with research seminars, discussions with academic staff and visiting researchers and meetings with representatives from the financial markets. This ensures an integrated and concrete learning environment with strong connections to the real world.

The programme is a perfect fit for individuals looking to enhance theoretical knowledge, quantitative and analytical skills and improve career opportunities in finance. It makes use of cutting-edge textbooks, and the latest research and materials published in the field.

Graduates of this programme, as with all XJTLU masters degrees, earn a University of Liverpool degree that is recognised by the Chinese Ministry of Education.



SCAN THE QR CODE  
TO VISIT THE  
PROGRAMME  
WEBSITE

**PROGRAMME DIRECTOR**  
[qing.ye@xjtlu.edu.cn](mailto:qing.ye@xjtlu.edu.cn)

**GENERAL ENQUIRIES**  
[pgenquiries@xjtlu.edu.cn](mailto:pgenquiries@xjtlu.edu.cn)

**APPLY**  
[www.xjtlu.edu.cn/en/find-a-programme/masters/msc-finance](http://www.xjtlu.edu.cn/en/find-a-programme/masters/msc-finance)

International Business School Suzhou (IBSS) is one of an elite group of institutions worldwide to be accredited by the AACSB (Association to Advance Collegiate Schools of Business) and EQUIS (European Quality Improvement System) in 2016 and 2018 respectively. AACSB accreditation is a globally recognised standard for the highest quality in business education. Only five per cent of business schools worldwide have been awarded the accreditation. The EQUIS accreditation is a quality certification system for business schools set up by the EFMD (European Foundation for Management Development). It has become the most global authoritative and select business school certification body in the world with its comprehensive and rigorous review process. IBSS becomes the youngest business school in the world to have received both EQUIS and AACSB accreditation. There are only less than 100 business schools that have received both AACSB and EQUIS accreditation. This is an important milestone in becoming a world class business school and highlights the strength and significant influence of IBSS at the international level.

### DISTINCTIVE FEATURES

- You will have the opportunity to apply for teaching and research assistantships within the International Business School Suzhou and across the University during your studies.
- You will listen to and meet high-profile people from the management world as well as attend networking events with local employers and events organised by recruiting organisations on campus.
- Graduates of this programme, as with all XJTLU masters degrees, earn a University of Liverpool degree that is recognised by the Chinese Ministry of Education.

### MODULES

ADVANCED CORPORATE FINANCE  
ADVANCED INVESTMENTS  
ADVANCED DERIVATIVES  
FINANCIAL ECONOMICS (OPTIONAL)  
ACCOUNTING AND FINANCIAL MANAGEMENT (OPTIONAL)  
MONEY AND BANKING  
ECONOMETRICS  
TIME SERIES ANALYSIS  
ALTERNATIVE INVESTMENTS AND STRATEGIES (OPTIONAL)  
MACROECONOMIC THEORY (OPTIONAL)  
FINANCE DISSERTATION

### ADDITIONAL LEARNING ACTIVITIES

The completion of additional learning activities is required to obtain your masters degree. Normally, required ALA hours will be distributed evenly across each semester, amounting to 200 hours per semester. Part-time programmes will normally require 100 to 150 hours per semester.

### KNOWLEDGE AND SKILLS

The MSc Finance programme will equip you with:

- comprehensive knowledge of contemporary financial and economic theories, and their application to the challenges that organisations face today
- the research skills and quantitative analysis techniques required to evaluate and interpret complex data, and research literature in the fields of finance and financial management
- academic knowledge and skills, as well as 'softer' business skills that employers value, such as emotional intelligence, creative thinking and high-impact communication.

### CAREERS

The MSc Finance programme is designed to support career entry and development in finance-related roles within world financial markets, multinational corporations, investment banks, asset management companies, banks, non-financial companies, government agencies and consultancies, as well as in other financial institutions. It also prepares students for doctoral studies and an academic career.

XJTLU

POSTGRADUATE 2019



# MSc

# INTERNATIONAL

# FINANCIAL

# MANAGEMENT

## MSc INTERNATIONAL FINANCIAL MANAGEMENT

The MSc International Financial Management programme offers an opportunity for graduates from a diverse range of undergraduate disciplines to specialise at postgraduate level in international financial management. The programme allows graduates from non-finance disciplines (including sciences, mathematics, engineering, humanities and social sciences) to obtain the requisite knowledge and education to allow them to transfer to a career in finance or related professions. The programme is ideal for those students who seek a career in multinational business, accounting and finance-related business, retail banking, financial markets and many other areas where financial expertise is needed. Graduates of the programme may also go on to consulting careers or further academic study at an advanced level.

Graduates of this programme, as with all XJTLU masters degrees, earn a University of Liverpool degree that is recognised by the Chinese Ministry of Education.

International Business School Suzhou (IBSS) is one of an elite group of institutions worldwide to be accredited by the AACSB (Association to Advance Collegiate Schools of Business) and EQUIS (European Quality Improvement System) in 2016 and 2018 respectively. AACSB accreditation is a globally recognised standard for the highest quality in business education. Only five per cent of business schools worldwide have been awarded the accreditation. The EQUIS accreditation is a quality certification



SCAN THE QR CODE  
TO VISIT THE  
PROGRAMME  
WEBSITE

**PROGRAMME DIRECTOR**  
[brian.wright@xjtlu.edu.cn](mailto:brian.wright@xjtlu.edu.cn)

**GENERAL ENQUIRIES**  
[pgenquiries@xjtlu.edu.cn](mailto:pgenquiries@xjtlu.edu.cn)

**APPLY**  
[www.xjtlu.edu.cn/en/find-a-programme/masters/msc-international-financial-management](http://www.xjtlu.edu.cn/en/find-a-programme/masters/msc-international-financial-management)

system for business schools set up by the EFMD (European Foundation for Management Development). It has become the most global authoritative and select business school certification body in the world with its comprehensive and rigorous review process. IBSS becomes the youngest business school in the world to have received both EQUIS and AACSB accreditation. There are only less than 100 business schools that have received both AACSB and EQUIS accreditation. This is an important milestone in becoming a world class business school and highlights the strength and significant influence of IBSS at the international level.

Note: This programme is awaiting official recognition from the Ministry of Education of the People's Republic of China.

### MODULES

#### SEMESTER ONE

INTERNATIONAL BUSINESS

ACCOUNTING AND FINANCIAL MANAGEMENT

CORPORATE FINANCIAL MANAGEMENT

Choose one of three options:

ECONOMETRICS

QUANTITATIVE METHODS FOR FINANCE

MONEY AND BANKING

#### SEMESTER TWO

INTERNATIONAL CORPORATE FINANCIAL MANAGEMENT

INTERNATIONAL FINANCIAL ACCOUNTING AND REPORTING

INTERNATIONAL FINANCE AND ECONOMICS

Choose one of three options:

BUSINESS PLANNING – FINANCIAL MODELLING

ECONOMETRICS FOR FINANCIAL DECISION-MAKING

TOPICS IN CONTEMPORARY ACCOUNTING AND FINANCE

#### SEMESTER THREE

INTERNATIONAL FINANCIAL MANAGEMENT DISSERTATION

### DISTINCTIVE FEATURES

This programme aims to equip graduates with:

- the intellectual skills and theoretical understanding appropriate to the study of accounting and finance
- a strong practical ability to solve real-world financial issues faced by firms, especially those arising from the international dimension
- skills in dealing with complex financial data and in using it to make decisions and recommendations that add value to an organisation
- the ability to perform research into financial issues facing firms and to make recommendations based on that research

### ADDITIONAL LEARNING ACTIVITIES

The completion of additional learning activities is required to obtain your masters degree. Normally, required ALA hours will be distributed evenly across each semester, amounting to 200 hours per semester. Part-time programmes will normally require 100 to 150 hours per semester.

### KNOWLEDGE AND SKILLS

You will acquire a wide range of skills relating to the analysis of business problems from a financial perspective, along with the ability to understand contemporary developments in international business, the accounting and finance industry, international financial markets and the global banking system. You will also acquire an ability to interpret, understand and apply data and information published in the financial statements of publicly-listed corporations, and to utilise financial data in decision-making.

### CAREERS

Graduates of this programme will effectively have converted their non-financial undergraduate education into masters-level knowledge of international financial management. This will make graduates of the programme attractive recruitment prospects for the finance departments of both Chinese and international corporations, as well as in financial consultancies, banks, and accounting and auditing firms, especially when working in an international context.

The programme will also be a useful starting point for non-finance graduates who wish to sit examinations leading to the professional qualifications of the Chartered Financial Analyst (CFA) Institute, Chartered Institute of Management Accountants (CIMA), Association of International Accountants (AIA), or similar qualifications (though this would require additional training and the passing of professional examinations).



# MSc

# INVESTMENT

# MANAGEMENT

## MSc INVESTMENT MANAGEMENT

The MSc Investment Management programme will provide you with a solid understanding of financial markets, securities and investment management theories and strategies. You will also grasp the complexities of contemporary economics and financial principles and how these apply to decision-making in financial intermediation, savings and investment. The programme is designed to meet the growing demand amongst banks, fund managers, regulators and other financial institutions in China and Asia. It aims to produce graduates who have specialist knowledge and an understanding of financial markets and investment management.

This is a practiced-based masters degree with the objective of preparing you for employment in the financial markets after graduation, though it can also serve as a base for further academic study. International Business School Suzhou has worked with Thomson Reuters, Bloomberg, Wind, WRDS, and CSMAR to offer students on this programme privileged access to the on-campus Financial Lab and Trading Floor as well as to a wealth of analytics and data on global financial markets for both study and research purposes.

Graduates of this programme, as with all XJTU masters degrees, earn a University of Liverpool degree that is recognised by the Chinese Ministry of Education.

International Business School Suzhou (IBSS) is one of an elite group of institutions worldwide to be accredited by the AACSB (Association to Advance Collegiate Schools of Business) and EQUIS

(European Quality Improvement System) in 2016 and 2018 respectively. AACSB accreditation is a globally recognised standard for the highest quality in business education. Only five per cent of business schools worldwide have been awarded the accreditation. The EQUIS accreditation is a quality certification system for business schools set up by the EFMD (European Foundation for Management Development). It has become the most global authoritative and select business school certification body in the world with its comprehensive and rigorous review process. IBSS becomes the youngest business school in the world to have received both EQUIS and AACSB accreditation. There are only less than 100 business schools that have received both AACSB and EQUIS accreditation. This is an important milestone in becoming a world class business school and highlights the strength and significant influence of IBSS at the international level.

### DISTINCTIVE FEATURES

#### IBSS Financial Lab

IBSS is unique in China with its on-campus IBSS Financial Lab and Trading Floor. This trading and analytics room, created in partnership with financial institutes, has 25 positions and contains the Thomson Reuters EIKON system, Bloomberg Terminal, Wind Financial Terminal, Wharton Research Data Services (WRDS), and CSMAR Financial Database, used by financial institutions around the world for both trading and analysis purposes. These sophisticated terminals and databases give students access to a wealth of data for study and research purposes. Students will be trained to use these terminals. Students may take exams to obtain certificates offered by, for example, Thomson Reuters for its EIKON certificate, a valuable skill for anyone that wants to enter the financial industry, whether in China or abroad.

#### Recognition by the CFA Institute

The MSc Investment Management programme has been designed to map to the CFA (Chartered Financial Analyst) Program Candidate Body of Knowledge™ (CBOK) and has been formally recognised under the CFA Institute University Recognition Program.

### MODULES

FINANCIAL ANALYSIS

QUANTITATIVE METHODS FOR FINANCE

EQUITY: CASH AND DERIVATIVE INSTRUMENTS

FINANCIAL DERIVATIVES

ETHICAL AND PROFESSIONAL STANDARDS IN FINANCE

ADVANCED CORPORATE FINANCE

ALTERNATIVE INVESTMENT AND STRATEGIES

FIXED INCOME AND DERIVATIVE INSTRUMENTS

PORTFOLIO MANAGEMENT

INDUSTRY RESEARCH PROJECT

### ADDITIONAL LEARNING ACTIVITIES

The completion of additional learning activities is required to obtain your masters degree. Normally, required ALA hours will be distributed evenly across each semester, amounting to 200 hours per semester. Part-time programmes will normally require 100 to 150 hours per semester.

### KNOWLEDGE AND SKILLS

The MSc Investment Management programme will equip you with:

- knowledge and understanding of financial markets in China and internationally
- preparation for the CFA exam
- training on the Thomson Reuters EIKON system, Bloomberg Terminal and Wind Financial Terminal, used throughout the financial markets and securities
- training on programming skills in accessing Wharton Research Data Services (WRDS) and CSMAR Financial Database throughout the research on financial markets and investment strategies
- specialist, technical knowledge in financial markets and securities
- career guidance and support in CV writing, interview skills, and other career support services

### CAREERS

We are at a historic point in time as China, the world's second largest economy, deregulates and grows its financial markets. The country is short of qualified professionals, at both graduate and career levels, as financial markets are so new to the country. In the coming years we expect to see very high growth in the employment of new graduates with a solid education in financial markets and investment management. This is not just an opportunity for Chinese nationals who wish to work in Shanghai or other Chinese cities but also for international students, as banks around the world build their "China desks" and search for people with knowledge and contacts within China. The MSc Investment Management programme at IBSS is designed to meet this growing demand.



SCAN THE QR CODE  
TO VISIT THE  
PROGRAMME  
WEBSITE

PROGRAMME DIRECTOR  
[yingying.wu@xjtu.edu.cn](mailto:yingying.wu@xjtu.edu.cn)

GENERAL ENQUIRIES  
[pgenquiries@xjtu.edu.cn](mailto:pgenquiries@xjtu.edu.cn)

APPLY  
[www.xjtu.edu.cn/en/find-a-programme/masters/msc-investment-management](http://www.xjtu.edu.cn/en/find-a-programme/masters/msc-investment-management)



## MRes MANAGEMENT

The MRes Management programme helps you develop a systematic understanding and critical appreciation of alternative approaches, methodologies and paradigms of research in the field of business and management. It will equip you with an understanding of what constitutes quality research, and acquaint you with the research processes involved from the point of inception to project completion. You will be registered as an off-site University of Liverpool postgraduate research student, while studying at XJTLU in China.

The overall goal of the programme is to develop fully trained and competent management researchers who are able to understand and use research techniques appropriate to their subject area.

Graduates of this programme, as with all XJTLU masters degrees, earn a University of Liverpool degree that is recognised by the Chinese Ministry of Education.

International Business School Suzhou (IBSS) is one of an elite group of institutions worldwide to be accredited by the AACSB (Association to Advance Collegiate Schools of Business) and EQUIS (European Quality Improvement System) in 2016 and 2018 respectively. AACSB accreditation is a globally recognised standard for the highest quality in business education. Only five per cent of business schools worldwide have been awarded the accreditation. The EQUIS accreditation is a quality certification system for business schools set up by the EFMD (European Foundation for Management Development). It has become the most global authoritative and select business school certification body in the world with its comprehensive and rigorous review process. IBSS becomes the youngest business school in the world to have received



SCAN THE QR CODE  
TO VISIT THE  
PROGRAMME  
WEBSITE

**PROGRAMME DIRECTOR**  
[victor.chang@xjtlu.edu.cn](mailto:victor.chang@xjtlu.edu.cn)

**GENERAL ENQUIRIES**  
[pgenquiries@xjtlu.edu.cn](mailto:pgenquiries@xjtlu.edu.cn)

**APPLY**  
[www.xjtlu.edu.cn/en/find-a-programme/masters/mres-management](http://www.xjtlu.edu.cn/en/find-a-programme/masters/mres-management)

both EQUIS and AACSB accreditation. There are only less than 100 business schools that have received both AACSB and EQUIS accreditation. This is an important milestone in becoming a world class business school and highlights the strength and significant influence of IBSS at the international level.

### DISTINCTIVE FEATURES

- This programme is both a stand-alone masters programme as well as a prerequisite to those who wish to earn a PhD degree in management, economics or financial economics.
- Graduates of this programme, as with all XJTLU masters degrees, earn a University of Liverpool degree that is recognised by the Chinese Ministry of Education.

### MODULES

MRes Management students are required to take the following core modules, followed by a research project (dissertation):

#### BUSINESSSCIENCE

#### QUANTITATIVE METHODS

#### QUALITATIVE METHODS

#### ADVANCED RESEARCH METHODS

Co-registration onto the PhD programme is possible after 12 months subject to satisfactory performance.

### ADDITIONAL LEARNING ACTIVITIES

The completion of additional learning activities is required to obtain your masters degree. Normally, required ALA hours will be distributed evenly across each semester, amounting to 200 hours per semester. Part-time programmes will normally require 100 to 150 hours per semester.

Available additional learning activities on MRes Management include:

- Operations modelling and simulation
- Postgraduate English
- Chinese language
- Graduate teaching assistantship
- Graduate research assistantship
- Graduate work placement
- Participation in IBSS research seminar series
- In-company project
- Presentation of scholarly research paper
- Writing of scholarly research paper
- Thompson One Certificate achievement
- EIKON Certificate achievement
- Datastream Certificate achievement
- Personal and employability skills

- Professional software skills
- Volunteer work for University and school projects and events
- Field trip/company visit
- Career development activities

### KNOWLEDGE AND SKILLS

The MRes Management programme will equip you to:

- review systematically, and evaluate critically research paradigms and demonstrate how they inform management research projects
- analyse business and management processes and their environment using a multitude of conceptual approaches
- understand how the examination of different aspects in business and management research can be integrated
- demonstrate comprehensive understanding and critical reflection of literature in the field of study
- demonstrate self-direction and originality in the design of quality research projects in a range of managerial and organisational settings
- understand and systematically apply research skills in quantitative, qualitative and mixed-method data collection and analysis relative to business and management research
- appreciate how the organisational context affects the design, conduct, analysis, and interpretation of research in business and management
- advance your knowledge and understanding through the completion and comprehensive write-up of independently conducted research projects

### CAREERS

Industry opportunities may manifest themselves in the form of research posts in private and public sector organisations. The programme has a substantial theoretical and methodological core that provides an essential basis for students moving on to doctoral level study.



# MSc

# MANAGEMENT

POSTGRADUATE 2019

## MSc MANAGEMENT

This dynamic, contemporary and innovative programme prepares you for management positions across a wide range of industries. It is also designed to assist current managers in preparation for more senior roles.

Open to those with an undergraduate degree in any discipline, the MSc Management programme offers you broad theoretical and practical knowledge of management. The modules cover many topics of relevance to managers both in China and internationally, including international business, strategy, finance, leadership, marketing and entrepreneurship. You will also complete a research project or dissertation on a management-related topic of your choice in consultation with the programme director.

Graduates of this programme, as with all XJTLU masters degrees, earn a University of Liverpool degree that is recognised by the Chinese Ministry of Education.

International Business School Suzhou (IBSS) is one of an elite group of institutions worldwide to be accredited by the AACSB (Association to Advance Collegiate Schools of Business) and EQUIS (European Quality Improvement System in 2016 and 2018 respectively). AACSB accreditation is a globally recognised standard for the highest quality in business education. Only five per cent of business schools worldwide have been awarded the accreditation. The EQUIS accreditation is a quality certification system for business schools set up by the EFMD (European Foundation for Management Development). It has become



SCAN THE QR CODE  
TO VISIT THE  
PROGRAMME  
WEBSITE

**PROGRAMME DIRECTOR**  
[bing.wuberberich@xjtlu.edu.cn](mailto:bing.wuberberich@xjtlu.edu.cn)

**GENERAL ENQUIRIES**  
[pgenquiries@xjtlu.edu.cn](mailto:pgenquiries@xjtlu.edu.cn)

**APPLY**  
[www.xjtlu.edu.cn/en/find-a-programme/masters/msc-management](http://www.xjtlu.edu.cn/en/find-a-programme/masters/msc-management)

the most global authoritative and select business school certification body in the world with its comprehensive and rigorous review process. IBSS becomes the youngest business school in the world to have received both EQUIS and AACSB accreditation. There are only less than 100 business schools that have received both AACSB and EQUIS accreditation. This is an important milestone in becoming a world class business school and highlights the strength and significant influence of IBSS at the international level.

### DISTINCTIVE FEATURES

Master of Science in Management, at International Business School Suzhou offers an unique combination of academic studies with a strong practical business engagement at all levels. The ecosystem surrounding the school has one of the best vibes in world, and it promotes global best practice for innovation and entrepreneurship.

### MODULES

#### CORE MODULES

#### INTERNATIONAL BUSINESS

#### ACCOUNTING AND FINANCIAL MANAGEMENT

#### STRATEGIC ORGANISATIONAL DESIGN

#### STRATEGIC BUSINESS ANALYSIS

#### BUSINESS LEADERSHIP

#### MARKETING MANAGEMENT

#### STRATEGIC OPERATIONS MANAGEMENT

#### DISSERTATION OR BUSINESS PROJECT

#### OPTIONAL MODULES (1 CHOICE)

#### ENTREPRENEURSHIP AND BUSINESS CREATION

#### BIG DATA – APPLICATIONS IN BUSINESS

#### ORGANIZATIONAL BEHAVIOUR AND PEOPLE MANAGEMENT

### ADDITIONAL LEARNING ACTIVITIES

The completion of additional learning activities is required to obtain your masters degree. Normally, required ALA hours will be distributed evenly across each semester, amounting to 200 hours per semester. Part-time programmes will normally require 100 to 150 hours per semester.

### KNOWLEDGE AND SKILLS

The MSc Management programme will equip you with:

- a rich understanding of management practices and theories
- insights into how to conduct a broad range of managerial functions and tasks
- an awareness of the demands of management in business
- research skills through project and dissertation work
- potential work experience through internships (for students who are not already employed)
- excellent networking possibilities

### CAREERS

Surrounded by many of the world's leading Fortune 500 companies and top Chinese companies, IBSS and our career development team are ideally located for deep engagement with potential national and multinational employers to identify the best job opportunities for our MSc Management students.

This programme includes career skills and personal development support to assist you with career evaluation, job searches, and professional skills development, such as:

- consultations with our career development team
- guidance on job search techniques
- coaching in writing cover letters and CVs as well as interview skills
- building and assessing soft competencies like working in teams, communication and presentation skills
- assistance in employment and work permit issues.



“Academically and practically I learnt a lot about business and the economy, its interconnections and how to ‘speak the language’ of management. The professors from different intercultural and interdisciplinary roots gave us insight into their experience and taught us to critically reflect. I also learned a lot from my fellow students from eight different nationalities.”

JULIET AMPAH  
ALUMNA  
MSc MANAGEMENT

XJTLU

POSTGRADUATE 2019



MSc

OPERATIONS

AND SUPPLY

CHAIN

MANAGEMENT

## MSc OPERATIONS AND SUPPLY CHAIN MANAGEMENT

The MSc Operations and Supply Chain Management programme covers all aspects of effective operations and supply chain management, in a highly competitive global marketplace. It looks at how successful operations and supply chain management can shape the sales and profit potential of a business. Combining XJTLU's growing reputation and International Business School Suzhou's dynamic and innovative international expertise, alongside intensive collaboration with the business community and proximity to the Yangtze River Delta region, the programme is one of the few English language masters programmes of its type in China.

Throughout the programme, opportunities are provided for you to analyse and examine the most up-to-date developments in operations and supply chain practice through a series of industrial lectures and best practice industry visits. You will be equipped with the knowledge and skills needed to reach senior managerial positions or become an operations, logistics and supply chain management strategist.

Graduates of this programme, as with all XJTLU masters degrees, earn a University of Liverpool degree that is recognised by the Chinese Ministry of Education.

International Business School Suzhou (IBSS) is one of an elite group of institutions worldwide to be accredited by the AACSB (Association to Advance Collegiate Schools of Business) and EQUIS (European Quality Improvement System)



SCAN THE QR CODE TO VISIT THE PROGRAMME WEBSITE

**PROGRAMME DIRECTOR**  
guoquan.liu@xjtlu.edu.cn

**GENERAL ENQUIRIES**  
pgenquiries@xjtlu.edu.cn

**APPLY**  
[www.xjtlu.edu.cn/en/find-a-programme/masters/msc-operations-and-supply-chain-management](http://www.xjtlu.edu.cn/en/find-a-programme/masters/msc-operations-and-supply-chain-management)

in 2016 and 2018 respectively. AACSB accreditation is a globally recognised standard for the highest quality in business education. Only five per cent of business schools worldwide have been awarded the accreditation. The EQUIS accreditation is a quality certification system for business schools set up by the EFMD (European Foundation for Management Development). It has become the most global authoritative and select business school certification body in the world with its comprehensive and rigorous review process. IBSS becomes the youngest business school in the world to have received both EQUIS and AACSB accreditation. There are only less than 100 business schools that have received both AACSB and EQUIS accreditation. This is an important milestone in becoming a world class business school and highlights the strength and significant influence of IBSS at the international level.

### DISTINCTIVE FEATURES

During your studies, there is the opportunity to engage with and learn from leading organisations, thanks to our extensive links with businesses and public sector services, locally and across the world, providing you with exciting opportunities for placements, mentoring, involvement in live projects, and networking.

### MODULES

#### CORE MODULES

SUPPLY CHAIN OPERATIONS MANAGEMENT

STRATEGIC OPERATIONS MANAGEMENT

LOGISTICS AND PHYSICAL DISTRIBUTION

STRATEGIC PURCHASING MANAGEMENT

THEORY AND PRACTICE OF LEAN OPERATIONS

STRATEGIC BUSINESS ANALYSIS

DISSERTATION

#### ELECTIVE MODULES

Accounting and financial management

Fundamentals of project management

Modelling and simulation of operations

Marketing management

### ADDITIONAL LEARNING ACTIVITIES

The completion of additional learning activities is required to obtain your masters degree. Normally, required ALA hours will be distributed evenly across each semester, amounting to 200 hours per semester. Part-time programmes will normally require 100 to 150 hours per semester.

### KNOWLEDGE AND SKILLS

Through studying MSc Operations and Supply Chain Management you will:

- develop an understanding of how operations can be managed as a strategic resource
- understand the requirements of successful operations and supply chain practice in modern business
- learn how to identify and apply a range of operations management initiatives and techniques that can be considered in the development of an operations strategy
- understand and be able to apply the models, processes and tools used to analyse, design and implement operations and supply chain management and logistics solutions
- gain understanding of the decisions involved in the selection of suppliers as well as the role and objectives of the purchasing function
- develop a thorough understanding of the components of supply chains, the material and information flow interactions between them and the analytical and management processes that facilitate successful supply chain performance
- be able to apply benchmarking and comparative performance techniques
- be able to demonstrate critical awareness of current research in business and management through independent analysis of a relevant business case

### CAREERS

MSc Operations and Supply Chain Management graduates are now working for companies like Jaguar, Bosch, Mondeleze, Accenture, Caterpillar, Daimler Chrysler, Deloitte Consultants, Ford Motor Company, GE, Maersk, Unilever, Unipart, Westinghouse and Cargill.



# MSc

# PROFESSIONAL

# ACCOUNTING

POSTGRADUATE 2019

## MSc PROFESSIONAL ACCOUNTING

The MSc Professional Accounting programme aims to provide you with strong professionally oriented training in accounting. You will study the professional syllabus of the Institute of Chartered Accountants in England and Wales (ICAEW) and will obtain exemptions from all six professional-level papers of the exams needed to gain chartered accountant status (subject to validation of the programme by ICAEW), as well as receiving preparation to sit the final advanced-level papers.

Graduates of this programme, as with all XJTLU masters degrees, earn a University of Liverpool degree that is recognised by the Chinese Ministry of Education.

International Business School Suzhou (IBSS) is one of an elite group of institutions worldwide to be accredited by the AACSB (Association to Advance Collegiate Schools of Business), a globally recognised standard for the highest quality in business education. Only five per cent of business schools worldwide have been awarded the accreditation and IBSS is the youngest school ever to have achieved it.



SCAN THE QR CODE  
TO VISIT THE  
PROGRAMME  
WEBSITE

**PROGRAMME DIRECTOR**  
[jun.geoz@xjtlu.edu.cn](mailto:jun.geoz@xjtlu.edu.cn)

**GENERAL ENQUIRIES**  
[pgenquiries@xjtlu.edu.cn](mailto:pgenquiries@xjtlu.edu.cn)

**APPLY**  
[www.xjtlu.edu.cn/en/find-a-programme/masters/msc-professional-accounting](http://www.xjtlu.edu.cn/en/find-a-programme/masters/msc-professional-accounting)

### KNOWLEDGE AND SKILLS

The MSc Professional Accounting programme will equip you with:

- intellectual skills and theoretical understandings appropriate to the study of accounting at postgraduate level
- an awareness of key current issues, theory and practice in the field of accounting
- skills in professional accounting and financial decision-making, evaluation and analysis of financial data and the techniques required to evaluate and act upon complex financial and tax-related issues encountered in practice
- the knowledge necessary towards qualifying and operating as a chartered accountant

### MODULES

FINANCIAL STRATEGY

FINANCIAL ACCOUNTING AND REPORTING

AUDIT AND ASSURANCE

BUSINESS STRATEGY AND MANAGEMENT

BUSINESS PLANNING - TAXATION

TAX COMPLIANCE

CORPORATE REPORTING AND AUDITING I AND II

STRATEGIC BUSINESS MANAGEMENT

INTEGRATED CASE STUDY

### ADDITIONAL LEARNING ACTIVITIES

The completion of additional learning activities is required to obtain your masters degree. Normally, required ALA hours will be distributed evenly across each semester, amounting to 200 hours per semester. Part-time programmes will normally require 100 to 150 hours per semester.

The additional learning activities on MSc Professional Accounting include:

- Introduction to research methods
- Personal and employability skills
- Postgraduate English
- Chinese Language
- Graduate teaching assistantship
- Graduate research assistantship
- Participation in IBSS research seminar series
- Thomson One Certificate achievement
- EIKON Certificate achievement
- Datastream Certificate achievement
- Professional software skills
- Volunteer work for University and School projects and events
- Field trip/company visit
- Career development activities
- Graduate work placement
- Professional accounting learning support sessions
- China tax and international tax
- Online training leading to professional accounting skills

### CAREERS

The MSc Professional Accounting programme is designed to prepare you to qualify as a chartered accountant with the ICAEW. It is also useful preparation towards other professional accountancy exams, such as those offered by ACCA (the Association of Chartered Certified Accountants).

“So far, I have hired two interns referred by the MSc Professional Accounting programme as my assistants for coordinating the Deloitte UK audits across APAC. I’m impressed with the all-around accounting education provided by the University through my working experience with its graduates. For this specific task, the candidate needs comprehensive knowledge of accounting principles, good level of English, great patience and attention to detail.”

**YU ZHONG**  
AUDIT MANAGER  
DELOITTE LONDON INTERNATIONAL GROUP



XJTLU

POSTGRADUATE 2019



# MSc

# PROJECT

# MANAGEMENT

## MSc PROJECT MANAGEMENT

The MSc Project Management programme will equip you with the necessary skills and knowledge to successfully manage projects in a variety of industries and contexts. You will learn about all aspects of how to effectively plan, implement, control and monitor, and handover projects of various sizes and complexities in a highly competitive global marketplace.

You will gain essential skills in the management of stakeholders' expectations, risk management and quality assurance on projects. The programme will teach you from both a practical and theoretical standpoint, how project management can be used as a tool to help grow business and achieve strategic objectives in an organisational setting.

The programme caters to the needs of experienced professionals as well as those who are at the beginning of their career in a project management-related role, through the acquisition of necessary skills and knowledge in a technology-embedded learning environment. It will serve as a pathway for you to achieve highly sought-after certifications in project management.

This is a practice-based degree with the objective of preparing you for the booming project management job market in China and beyond, though it can also serve as a base for further academic study.

Graduates of this programme, as with all XJTLU masters degrees, earn a University of Liverpool degree that is recognised by the Chinese Ministry of Education.



SCAN THE QR CODE  
TO VISIT THE  
PROGRAMME  
WEBSITE

**PROGRAMME DIRECTOR**  
[roberto.dona@xjtlu.edu.cn](mailto:roberto.dona@xjtlu.edu.cn)

**GENERAL ENQUIRIES**  
[pgenquiries@xjtlu.edu.cn](mailto:pgenquiries@xjtlu.edu.cn)

**APPLY**  
[www.xjtlu.edu.cn/en/find-a-programme/masters/msc-project-management](http://www.xjtlu.edu.cn/en/find-a-programme/masters/msc-project-management)

International Business School Suzhou (IBSS) is one of an elite group of institutions worldwide to be accredited by the AACSB (Association to Advance Collegiate Schools of Business) and EQUIS (European Quality Improvement System) in 2016 and 2018 respectively. AACSB accreditation is a globally recognised standard for the highest quality in business education. Only five per cent of business schools worldwide have been awarded the accreditation. The EQUIS accreditation is a quality certification system for business schools set up by the EFMD (European Foundation for Management Development). It has become the most global authoritative and select business school certification body in the world with its comprehensive and rigorous review process. IBSS has become the youngest business school in the world to have received both EQUIS and AACSB accreditation. There are only less than 100 business schools that have received both AACSB and EQUIS accreditation. This is an important milestone in becoming a world class business school and highlights the strength and significant influence of IBSS at the international level.

### DISTINCTIVE FEATURES

- provides skills with universal relevance, skills you can utilize to shape the strategic direction of the company as an advisor to leaders across a large variety of industries worldwide
- is designed around the globally recognised standards and frameworks such as PMI, IPMA, APM and GPM
- serves as a path to professional certifications from PMI, IPMA, APM and GPM
- offers fully integrated MS Project software training with 24/7 access to the software
- has a balanced structure that ensures quality of education and provides cutting-edge industry relevant project management skills.

### MODULES

#### CORE MODULES

FUNDAMENTALS OF PROJECT MANAGEMENT

PROJECT RISK MANAGEMENT

STRATEGIC BUSINESS ANALYSIS

PROJECT STAKEHOLDER MANAGEMENT

PROJECT LEADERSHIP AND GOVERNANCE

DISSERTATION/CONSULTANCY CAPSTONE PROJECT

#### ELECTIVE MODULES

STRATEGIC PURCHASING MANAGEMENT

STRATEGIC ORGANISATIONAL DESIGN

ENTREPRENEURSHIP AND BUSINESS CREATION

SOCIAL COMMERCE

AND OTHERS.

### ADDITIONAL LEARNING ACTIVITIES

The completion of additional learning activities is required to obtain your masters degree. Normally, required ALA hours will be distributed evenly across each semester, amounting to 200 hours per semester. Part-time programmes will normally require 100 to 150 hours per semester.

### KNOWLEDGE AND SKILLS

- The MSc Project Management programme will equip you with:
- Understanding of the role of project management and the project manager in the life of a project
- Knowledge of the components, processes, tools and techniques in the project management discipline as well as the interactions between these elements
- Knowledge of leadership and management concepts for effective management of projects undertaken locally or across international borders
- Critical understanding of project management theory and applications
- Skills in how to initiate, plan, execute, control, lead, evaluate and close projects to deliver an agreed scope within time, budget and quality constraints.
- Skills in the application of a range of techniques to determine, document and refine project goals, performance requirements, deliverables, constraints and risks as well as using project schedules, resource budgeting and quality in the lifecycle of a project.

### CAREERS

China is at the forefront of countries which require highly developed project management skills that contribute towards economic development and GDP growth. This means there is a continuous and strong demand for professionals with training in project management.

Suzhou, Shanghai and Wuxi are important hubs of business and economic activities and we expect to see a high demand for people with project management skills across various industries in these hubs and more widely across Asia and beyond.

Graduates may work in industries such as e-commerce, oil and gas, software, IT, construction, airlines, retail and manufacturing.



# INTERNATIONAL

# MBA

## INTERNATIONAL MBA

The International MBA programme combines rigorous academic modules with a wide range of professional development activities aimed at fostering your managerial and leadership capabilities. It does this within a unique environment that blends Chinese and Western cultures.

Whether you are based in China, the UK, or elsewhere, the IMBA is an international passport that will give you an edge in the world's largest and most competitive markets.

Graduates of this programme, as with all XJTLU masters degrees, earn a University of Liverpool degree that is recognised by the Chinese Ministry of Education.

International Business School Suzhou (IBSS) is one of an elite group of institutions worldwide to be accredited by the AACSB (Association to Advance Collegiate Schools of Business) and EQUIS (European Quality Improvement System) in 2016 and 2018 respectively. AACSB accreditation is a globally recognised standard for the highest quality in business education. Only five per cent of business schools worldwide have been awarded the accreditation. The EQUIS accreditation is a quality certification system for business schools set up by the EFMD (European Foundation for Management Development). It has become the most global authoritative and select business school certification body in the world with its comprehensive and rigorous review process. IBSS becomes the youngest business school in the world to have received both EQUIS and AACSB accreditation. There are only less than 100 business schools that have received both AACSB and EQUIS accreditation. This is an



SCAN THE QR CODE  
TO VISIT THE  
PROGRAMME  
WEBSITE

**PROGRAMME DIRECTOR**  
[adam.cross@xjtlu.edu.cn](mailto:adam.cross@xjtlu.edu.cn)

**GENERAL ENQUIRIES**  
[pgenquiries@xjtlu.edu.cn](mailto:pgenquiries@xjtlu.edu.cn)

**APPLY**  
[www.xjtlu.edu.cn/en/find-a-programme/masters/international-mba-autumn-\(part-time\)](http://www.xjtlu.edu.cn/en/find-a-programme/masters/international-mba-autumn-(part-time))

important milestone in becoming a world class business school and highlights the strength and significant influence of IBSS at the international level.

### MODULES

The IMBA programme is divided into four quarters, with core modules integrating key themes concerning management and leadership in an international context. These modules are accompanied by ongoing career development and leadership activities. The modules are:

#### MANAGING THE ECONOMIC CONTEXT

#### MANAGING FINANCIAL RESOURCES

#### THE ORGANISATION IN THE STRATEGIC CONTEXT

#### MANAGEMENT OF CHANGE AND INNOVATION

#### INTERNATIONAL MARKETING

#### OPERATIONS AND SUPPLY CHAIN MANAGEMENT STRATEGY

#### NEGOTIATING IN THE INTERNATIONAL ENVIRONMENT

#### COMPETING IN THE GLOBAL MARKET PLACE

#### FINAL INDIVIDUAL PROJECT.

### ADDITIONAL LEARNING ACTIVITIES

Throughout the IMBA programme, traditional academic modules will alternate with seminars and meetings with key representatives from different industries and a range of other activities that provide an integrated and concrete learning environment with strong connections to the real world.

The experience is further enriched by simulations and case studies dealing with issues at the cutting-edge of today's business. The IMBA programme's online platform builds teamwork skills by enabling you to work smoothly with peers and share ideas and inspiration. In addition, you are supported throughout your programme by a team of online tutors accessible through this platform. All this will enable you to:

- Develop your skills and attributes as a manager and leader
- Meet and engage with like-minded peers and industry leaders
- Attend social events with alumni
- Participate in business simulations
- Join individual career development workshops.

During your IMBA studies you will also attend the following additional learning activities:

- Business Communication skills
- Leadership Development
- Project Management
- Business Simulation
- Advanced Finance
- Research Methodology

### DISTINCTIVE FEATURES

The IMBA's flexibility and diversity make it a perfect fit for managers from international and Chinese companies as well as those in the public sector. This will help you develop leadership and professional skills and management knowledge while, at the same time, connecting you to a well-established and powerful network of professional relationships that includes the alumni of the prestigious University of Liverpool Management School. The flexibility of our IMBA also means that you can enjoy all of these benefits whilst continuing in full-time employment.

### KNOWLEDGE AND SKILLS

- The International MBA programme will equip you with:
  - A broad-based theoretical and practical understanding of modern management in a globalised environment.
  - A strong awareness of how the external environment, including political, economic, social and technological factors impacts on the modern organisation at a national and international level
- Skills in research to analyse and find solutions to problems facing both local and globalised companies.
- Skills in critical thinking, analysis and problem-solving, as well as in report writing and making effective presentations.



**FOLLOW US ON  
SOCIAL MEDIA**



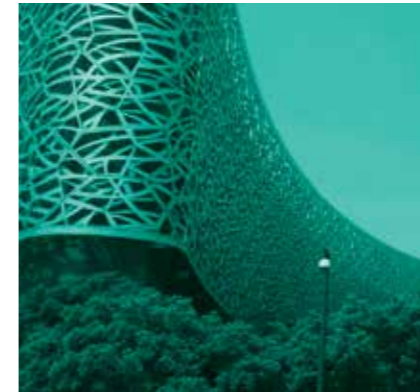
**WECHAT ID:  
XJTLU-CHINA**



**INSTAGRAM.COM/XJTLU**



**FACEBOOK.COM/XJTLU**



**WEIBO.COM/XJTLU**



**LINKEDIN.COM/  
SCHOOL/436551**



**TWITTER.COM/XJTLU**





**CONTACT:**

**WEBSITE:** [www.xjtlu.edu.cn](http://www.xjtlu.edu.cn)

**EMAIL:** [international@xjtlu.edu.cn](mailto:international@xjtlu.edu.cn)

**TEL:** +86 (0)512 8816 1889



Xi'an Jiaotong-Liverpool University

西交利物浦大學