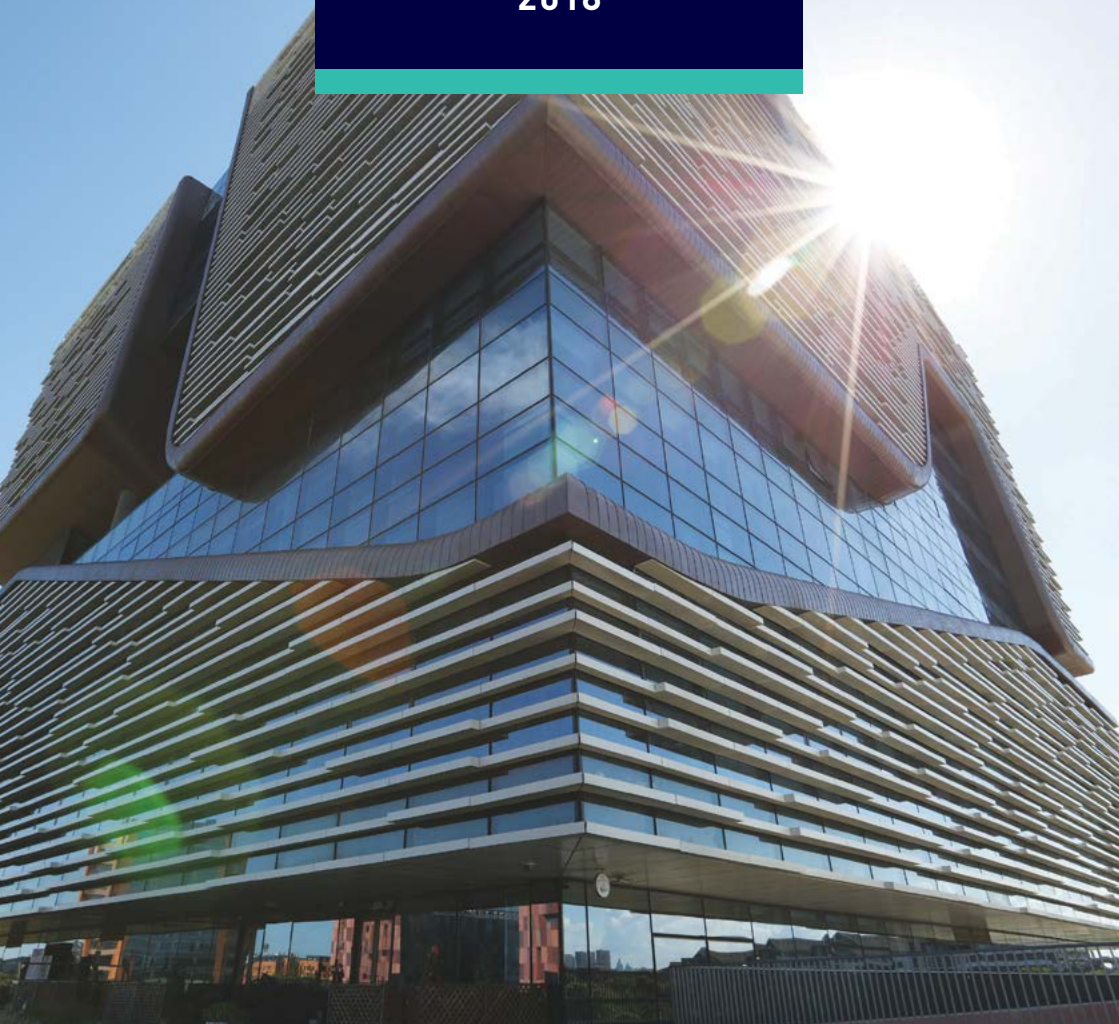


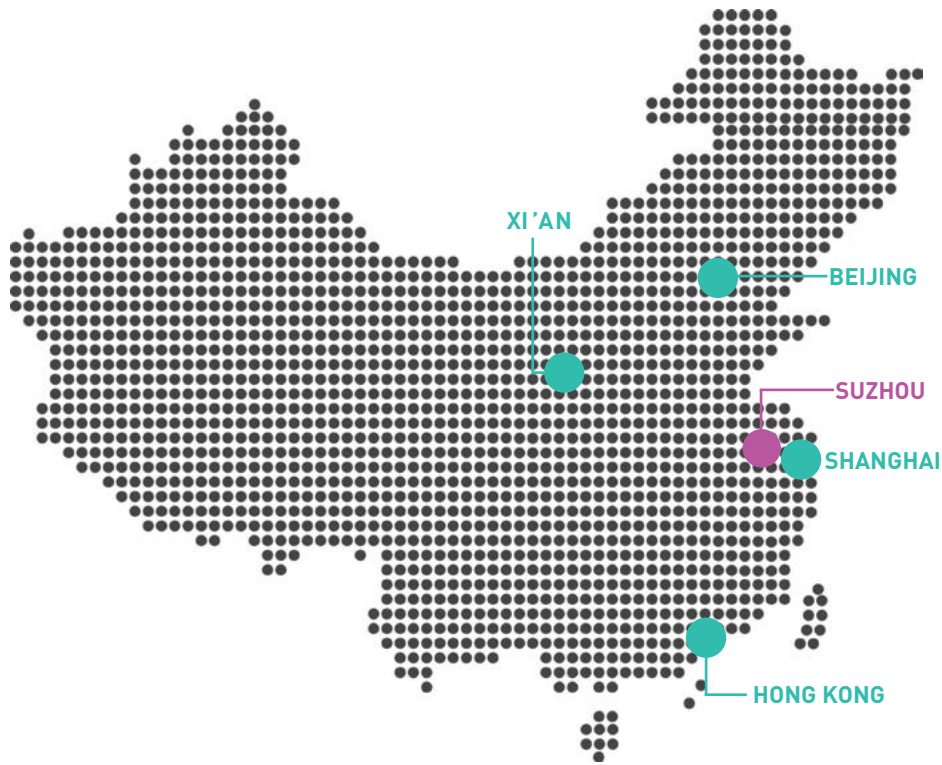
XJTLU

MASTERS
2018



Xi'an Jiaotong-Liverpool University
西交利物浦大學

WELCOME TO XJTLU



XJTLU IS LOCATED IN SUZHOU,
JUST 25 MINUTES FROM
SHANGHAI BY BULLET TRAIN.

You are the future entrepreneur,
scientist, architect, engineer, diplomat,
researcher, educator or executive in our
increasingly global environment.
You have a passion to understand other
cultures and become a citizen of the world.
We want you.

At Xi'an Jiaotong-Liverpool University you
will find an international community of learners
in the heart of China's economic miracle – and
opportunities found nowhere else on Earth.
XJTLU will help you develop into a global citizen
with the skills, knowledge, abilities, temperament
and tenacity to succeed in today's highly
competitive and fast-changing world.

We look forward to welcoming you to XJTLU.

XI'AN JIAOTONG- LIVERPOOL UNIVERSITY

XJTLU IS A PIONEERING,
INTERNATIONAL JOINT
VENTURE UNIVERSITY
LOCATED IN THE CITY OF
SUZHOU. THE UNIVERSITY
IS PROUD OF ITS FOCUS
ON RESEARCH-LED
LEARNING INHERITED
FROM ITS TWO PARENT
INSTITUTIONS: THE
UNIVERSITY OF
LIVERPOOL, UK, AND
XI'AN JIAOTONG
UNIVERSITY, CHINA.



XJTLU AT A GLANCE



UK DEGREE FROM THE UNIVERSITY OF LIVERPOOL

Globally recognised masters degree from the University of Liverpool, a member of the Russell Group of leading UK universities.



AN EXCITING RANGE OF MASTERS PROGRAMMES

Study sciences, technology, engineering, mathematics, architecture, design and planning, language and culture, media and communications, business, finance or economics.



ENGLISH-TAUGHT

All degrees are taught 100 percent in English. Summer pre-sessional English courses and continuing support services are also available.



WORLD-CLASS CAMPUS

State-of-the-art facilities located on a beautifully landscaped campus.



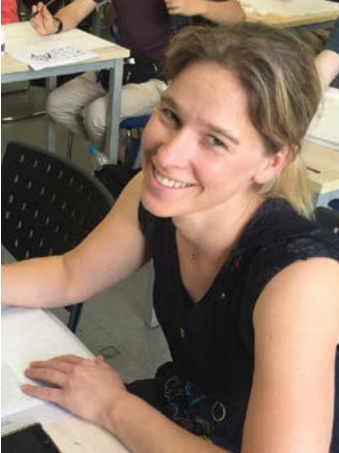
GROWING GLOBAL COMMUNITY

Over 10,000 students and 500 academic staff from 50 countries...and counting!



LEARN CHINESE FOR TOP CAREER PROSPECTS

The opportunity to study Chinese language at all levels. Bilingual China experts are highly sought-after in the global job market.



SINO-BRITISH EXCELLENCE

Founded in 2006, XJTLU is the largest international collaborative university in China, combining the best of east and west.



LOCATED IN SUZHOU, CHINA

China's equivalent of Silicon Valley, a hub of global business and innovation just 25 minutes from Shanghai, sits alongside stunning 2,500 year-old UNESCO World Heritage gardens.

DEGREE PROGRAMMES

MASTERS

XJTLU currently has programmes in the areas of engineering, science, architecture and design, mathematics, business, management, language, communication and culture.

Our masters degrees (awarded by the University of Liverpool, UK) equip you with the skills and knowledge to pursue your career in a relevant field, or

conduct pioneering research in an academic or industrial setting. All degrees are taught in English by world-class international academic staff and industry experts.

Programme length ranges from 18 months (full time) to 36 months (part time). Tuition fees vary by programme and generous scholarships are available. See our website for details.



SCAN TO VIEW ALL OF
OUR DEGREE PROGRAMMES

www.xjtlu.edu.cn/en/find-a-programme/?lev=masters

ACADEMIC QUALITY AND PROFESSIONAL RECOGNITION

The quality of our programmes is ensured through a rigorous quality assurance system established in line with the requirements of the British Quality Assurance Agency, supported by high-calibre scholars in the UK and in China.

An increasing number of programmes are gaining recognition from prestigious academic and professional accrediting bodies. We are one of the youngest universities to have earned these accreditations.



“XJTLU’s vision exemplifies China’s ideal to create partnerships of equals in higher education. XJTLU aims to blend the strengths of the Chinese and UK higher education systems.”

THE QUALITY ASSURANCE AGENCY
FOR HIGHER EDUCATION, UNITED KINGDOM

ARCHITECTURE



The department engages with the challenges and contradictions of architecture in China in an open-minded and forward-thinking manner. Students are encouraged to seek answers to the questions facing both local and international architecture today.

- **MASTER OF ARCHITECTURAL DESIGN** (¥160,000) 24 months

BIOLOGICAL SCIENCES



Biology provides insights into life processes, together with advances in genomics, diagnostics and therapeutic drug development, are having a major impact on humanity. The department aims to make fundamental discoveries as well as to address some of the most pressing challenges facing society.

- **MRes MOLECULAR BIOSCIENCE** (¥90,000)

CHEMISTRY



Chemistry is the foundation of many of today's frontier research, from nano-technology to computer chips, and from green energy to molecular biology. The department's research emphasis focusses mainly on chemical biology and advanced functional materials.

- **MRes ADVANCED CHEMICAL SCIENCES** (¥90,000)

CHINA STUDIES



The department teaches and researches China's history and culture, society and politics, business and economics. The department also has an active outreach educational programme for staff at XJTLU and in the wider community.

- **MA CHINA STUDIES** (¥90,000)

CIVIL ENGINEERING



China is currently witnessing rapid economic transformation, alongside unprecedented urbanisation and civil engineering students will be able to take full advantage of China's evolution. Graduates are technical professionals with an international outlook that can meet future industrial development requirements.

- **MSc CIVIL ENGINEERING** (¥90,000)*
- **MSc SUSTAINABLE CONSTRUCTION** (¥90,000)*

COMPUTER SCIENCE AND SOFTWARE ENGINEERING



The department equips students with a broad knowledge of computer-based systems. Students learn how to use their skills creatively to solve practical problems, as well as learn how cutting-edge computer technology is developed.

- **MRes COMPUTER SCIENCE** (¥90,000)
- **MSc APPLIED INFORMATICS** (¥90,000)
- **MSc FINANCIAL COMPUTING** (¥90,000)
- **MSc SOCIAL COMPUTING** (¥90,000)

ELECTRICAL AND ELECTRONIC ENGINEERING



Programmes are designed to give students solid training in information technology, both software and hardware. Emphasis is placed on the principles of electrical and electronic engineering as well as on more specialised subject areas.

- **MRes ELECTRICAL POWER AND ENERGY TECHNOLOGY** (¥90,000)
- **MSc MULTIMEDIA TELECOMMUNICATIONS** (¥90,000)
- **MSc SUSTAINABLE ENERGY TECHNOLOGY** (¥90,000)

ENGLISH



The department prepares graduates for careers as English-language professionals in the fields of translation, media, linguistics and language education.

- **MA MASS MEDIA TRANSLATION** (¥90,000)*
- **MATESOL** (¥90,000)*

INDUSTRIAL DESIGN



The department focusses on user-centred product and systems design for society in response to social, cultural, and technical context. It aims to educate a new generation of industrial and product designers for China's ongoing social, cultural, and economic transformation.

- **MDes INDUSTRIAL DESIGN** (¥90,000)*

INTERNATIONAL BUSINESS SCHOOL SUZHOU



Creative interaction and collaboration with international and domestic businesses, coupled with solid academic grounding, underpins the IBSS learning and teaching environment. This prepares Chinese students for international business and international students for doing business in or with China.

- **INTERNATIONAL MBA** (¥260,000)**
- **MRes MANAGEMENT** (¥120,000)
- **MSc BUSINESS ANALYTICS** (¥120,000)
- **MSc ECONOMICS AND FINANCE** (¥120,000)
- **MSc FINANCE** (¥120,000)
- **MSc INTERNATIONAL FINANCIAL MANAGEMENT** (¥120,000)
- **MSc INVESTMENT MANAGEMENT** (¥120,000)
- **MSc MANAGEMENT** (¥120,000)
- **MSc OPERATIONS AND SUPPLY CHAIN MANAGEMENT** (¥120,000)*
- **MSc PROFESSIONAL ACCOUNTING** (¥140,000)
- **MSc PROJECT MANAGEMENT** (¥120,000)*

MATHEMATICAL SCIENCES



The department's academic staff are internationally recognised for their high-quality research in a number of areas of modern mathematics. The mathematical and computational sciences are among the major research strengths of XJTLU.

- **MSc FINANCIAL MATHEMATICS** (¥90,000)

SCHOOL OF FILM AND TV ARTS



SOFTA aims to provide students with an understanding of theory-informed practice within cinema, broadcast television, the media in its many changing forms, and broader industries including digital media technology and arts, equipping students with an international vision and the language and communication skills to achieve this.

- **MSc MEDIA AND COMMUNICATIONS** (¥90,000)*

URBAN PLANNING AND DESIGN



Students studying urban planning and design develop understanding of the processes of spatial change in the built and natural environment and engage the arguments for intervening in these processes. Students develop the knowledge and skills to analyse, critique and ultimately contribute to the sustainability of urban and rural development both in China and around the world.

- **MSc URBAN DESIGN** (¥90,000)*
- **MSc URBAN PLANNING** (¥90,000)

All full-time programmes are 18 months in duration, unless otherwise stated.
*Part-time option also available.
**Part-time only.



RESEARCH

A defining feature of a serious university is its ability to generate knowledge, and to ensure that new insights are applied to the problems of society and passed down to future generations. Unsurprisingly, therefore, XJTLU places great emphasis on research and its impact on everything we do.

PHD STUDY

We offer PhD programmes across all academic departments at XJTLU and our PhD students, while based in Suzhou, are registered with the University of Liverpool UK as off-site doctoral students. This ensures that you benefit from not one, but two academic supervisors: a primary supervisor from XJTLU and a secondary supervisor from Liverpool. PhD students may apply for full funding.

For enquiries, please email doctoralstudies@xjtlu.edu.cn

SCAN TO FIND OUT MORE
ABOUT PhD STUDY
www.xjtlu.edu.cn/en/find-a-programme/?lev=doctoral



CAREERS AND EMPLOYABILITY

Suzhou Industrial Park has over 5,000 foreign-owned and Fortune 500 companies that provide XJTLU students with numerous internship and job opportunities.

XJTLU has established strategic cooperation and set up practice bases with organisations such as HSBC, Standard Chartered Bank, Siemens, KPMG, Alstom, Schneider Electric and Industrial and Commercial Bank of China.

XJTLU graduates are working at institutions and enterprises including the 'Big Four' accountancy firms, international banks, financial institutions and manufacturing and developing enterprises, as well as large and medium-sized state-owned companies.

Graduates also receive offers from companies around the world, including The Royal Bank of Scotland, Citibank, Ernst & Young, Tesco, Q-Game, HENKEL and Singapore National Grid. XJTLU graduates international perspectives and competitive capabilities are highly regarded by these global employers.



ENTREPRENEURSHIP

Among those who start work immediately upon graduation, some students choose to start their own company and the University encourages such actions. With guidance from the Career Development Office, many students take advantage of XJTLU Student Enterprise Park to develop their own products and start-up companies.

THE XJTLU INNOVATION HUB

The Innovation Hub provides a collaborative ecosystem of innovative programmes and partnerships that drives economic and entrepreneurial development among the XJTLU student and staff and the broader community. The hub organises conferences, competitions and events, undertakes research, consulting and funding, and provides mentoring, advice and support. We aim to be the leading university incubator of startups in China.

EXTERNAL MENTOR PROGRAMME

We invite experienced professionals from various companies to act as external mentors who provide guidance on the various skills that are necessary for your future career.



ACADEMIC STAFF

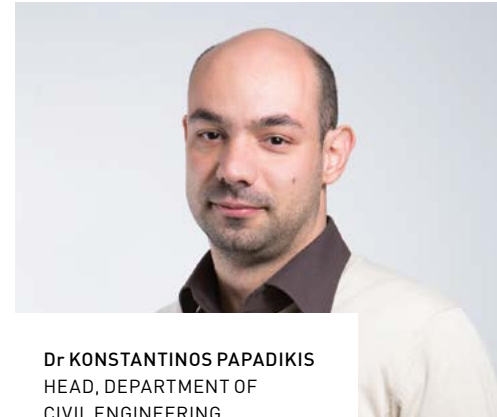
XJTLU has over 500 academic staff from more than 50 countries and regions, who have extensive international experience in industry and academia. They deliver cutting-edge research and teach current theories to prepare you for an excellent career.



Dr DERRICK TATE
HEAD, DEPARTMENT OF
INDUSTRIAL DESIGN



Dr HUI WANG
PROGRAMME DIRECTOR
MA MASS MEDIA TRANSLATION



Dr KONSTANTINOS PAPANIKIS
HEAD, DEPARTMENT OF
CIVIL ENGINEERING



Dr GANG LIU
ASSOCIATE PROFESSOR, DEPARTMENT
OF MATHEMATICAL SCIENCES



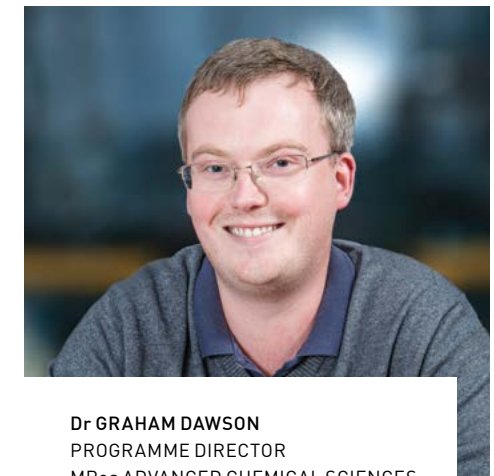
Dr CHRISTIAN NOLF
PROGRAMME DIRECTOR
MSc URBAN DESIGN



PROFESSOR YONG YUE
HEAD, DEPARTMENT OF COMPUTER
SCIENCE AND SOFTWARE ENGINEERING



Dr LAURA SAVA
LECTURER, SCHOOL OF FILM
AND TV ARTS



Dr GRAHAM DAWSON
PROGRAMME DIRECTOR
MRes ADVANCED CHEMICAL SCIENCES

AWARD-WINNING CAMPUS

The XJTLU campus provides state-of-the-art teaching, laboratory, research and support facilities.

This includes the award-winning Central Building, which houses the fully-resourced XJTLU Library.

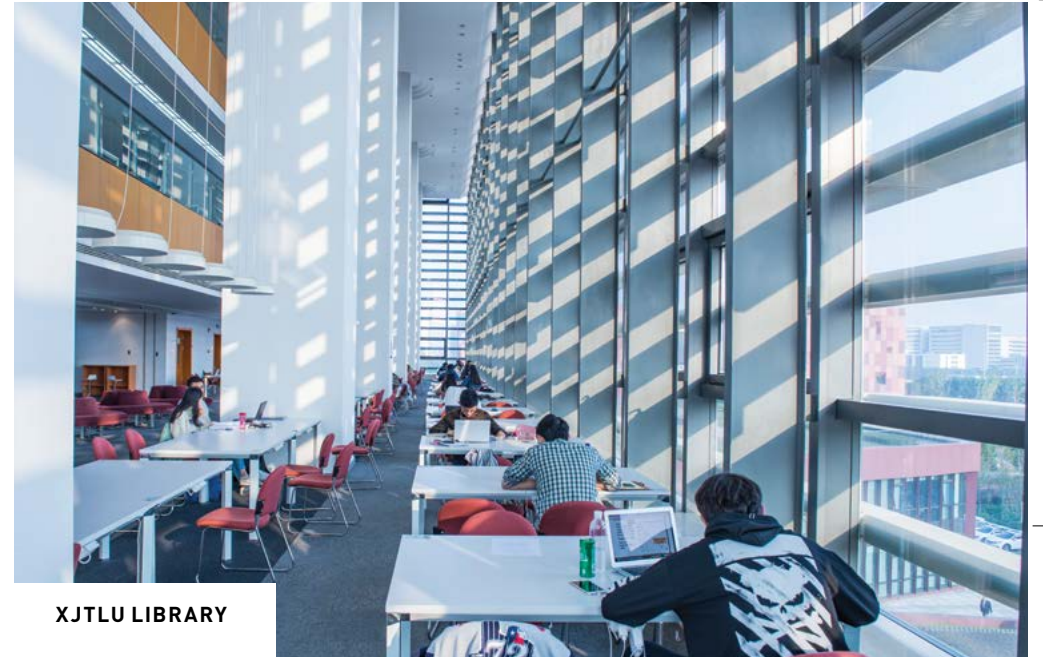
In addition to the world-class science and engineering laboratories, design and media studios, and communications laboratories, our campus also has conference facilities, tennis and basketball courts, a sports field and track, and a variety of catering facilities.



XJTLU NORTH AND SOUTH CAMPUSES



XJTLU SOUTH CAMPUS



XJTLU LIBRARY

STUDENT LIFE

An education at XJTLU brings with it not only outstanding academic opportunities, but also the chance to expand one's horizons socially and culturally.

XJTLU students study hard, but they also lead full and ambitious lives between classes. You can choose from more than 100 student organisations centred around art, sports, music, entrepreneurship and dance, to name but a few.



STUDENT SUPPORT

Support for your well-being and academic development is available throughout your time at XJTLU. Academic supervisors help you with personal and academic development and support you in devising your additional learning activity plan.

The Student Affairs Office offers additional help with study or personal issues for all students. The Student Academic Services Team is on hand to help you with class scheduling, academic records, degree requirements and much more. The Career Development Office provides assistance with work placements, job searches and general careers advice.

DEDICATED SUPPORT FOR INTERNATIONAL STUDENTS

The XJTLU Global team provides a range of services to help make your experience at XJTLU go as smoothly as possible. XJTLU Global is the first service point for all international and Hong Kong, Macao and Taiwan students. You can access a range of facilities, plus a support network to ensure your safety, health and well-being.

XJTLU Global will support you in arranging your accommodation and student visa. XJTLU Global organises a pick-up service for all new international students arriving in China at Shanghai Pudong airport. This service is available during three days of welcome week.



SCAN TO FIND OUT MORE ABOUT STUDENT SUPPORT
www.xjtlu.edu.cn/en/study-with-us/why-xjtlu/support-and-advice



RESERVING ACCOMMODATION

When you have received your offer and paid your deposit to secure your place at the University. Accommodation is guaranteed but options are on a first come, first serve basis.

COST OF LIVING

Accommodation expenses (excluding utilities and internet access) for international students range from RMB 15,500 to 31,000 (approximately USD 2,400 to 4,650) per year, depending on the type of accommodation you choose.

DUSHU LAKE SCIENCE AND EDUCATION INNOVATION DISTRICT

The accommodation facilities are located within the Science and Education Innovation District near to campus and are owned by the education town. All students at XJTLU are guaranteed accommodation for their entire duration of study.



SCAN TO FIND OUT MORE ABOUT ACCOMMODATION
www.xjtlu.edu.cn/en/life-at-xjtlu/accommodation

ADMISSION TO XJTLU

ENTRY REQUIREMENTS

The minimum entry requirement is a UK upper second class (2:1) or equivalent. However, admission requirements vary depending on the programme you choose. Please see our website for details.

ENGLISH LANGUAGE REQUIREMENTS

Masters or PhD students at XJTLU should have a high level of proficiency in the English language. Non-native speakers will typically require a minimum IELTS score of 6.0 (TOEFL iBT: 90) up to IELTS 7.0 (TOEFL iBT: 100). Students who completed a full-time degree programme delivered wholly in English

will normally be exempt from the English language requirements. If you miss the language requirements by 0.5-1.0 of IELTS then you can still apply for XJTLU by successfully completing a summer preessional English course at the University.

APPLY ONLINE

All applicants should apply via our online application system. To begin, simply choose your programme on our website and click the “apply” button. You will then be prompted to create an account, complete the application form, upload the required documents and submit. You may save and re-log in to your application form at any time and upload any remaining supporting documents.



**THE CLOSING DATE FOR
SEPTEMBER 2018 INTAKE IS
30 JUNE 2018 (INTERNATIONAL)
31 JULY 2018 (MAINLAND CHINA)**

CHECKLIST

- CERTIFICATES OF EDUCATION QUALIFICATIONS AND TRANSCRIPTS
- CERTIFICATES OF ENGLISH LANGUAGE QUALIFICATION (IF APPLICABLE)
- PERSONAL STATEMENT
- TWO LETTERS OF REFERENCE
- SCHOLARSHIP APPLICATION LETTER (OPTIONAL)

TUITION FEES

Tuition fees vary by programme and range from RMB 90,000-260,000 (see page 10-11 or visit our website). You must secure your place at XJTLU by paying a non-refundable deposit of RMB 10,000, which is deducted from the total tuition fee. Tuition fee payments can be made in instalments.

SCHOLARSHIPS

XJTLU offers a generous tuition fee scholarship of up to 50 percent for full-time programmes, based on academic merit. If you wish to be considered for XJTLU masters scholarships please refer to the website for details.

ALUMNI DISCOUNT

Graduates of XJTLU, the University of Liverpool or Xi'an Jiaotong University will automatically receive a tuition fee discount of 20 percent.

Applications will be considered as they are received and we encourage you to submit your application well in advance of the deadline. Some part-time programmes also have a February/March entry. Please refer to the relevant programme page on our website for details. PhD applications may be submitted at any time.

Note: The University reserves the right to modify programmes at any time in response to unforeseen circumstances, feedback and review. The University also reserves the right to not offer programmes with low enrolments. For the latest information, please visit our website.

SCAN TO FIND OUT MORE
ABOUT HOW TO APPLY
www.xjtlu.edu.cn/en/study-with-us/admissions/how-to-apply



FOLLOW US ON SOCIAL MEDIA



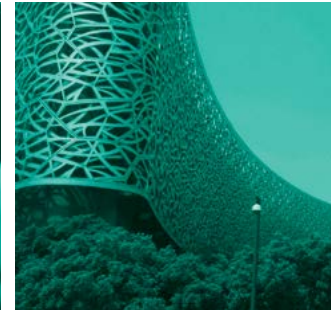
WECHAT ID:
XJTLU-CHINA



INSTAGRAM.COM/XJTLU



FACEBOOK.COM/XJTLU



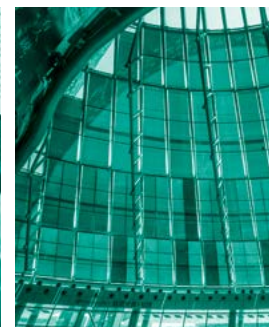
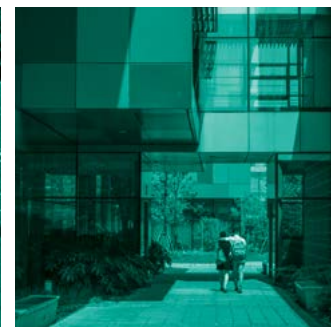
WEIBO.COM/XJTLU



LINKEDIN.COM/
SCHOOL/436551



TWITTER.COM/XJTLU



CONTACT

XJTLU Masters Admissions

pgenquiries@xjtlu.edu.cn

www.xjtlu.edu.cn

+86 (0)512 8816 1889 (International Applicants)

(0)512 8816 7111 (Mainland China Applicants)



Xi'an Jiaotong-Liverpool University

西交利物浦大學