

XJTLU



MASTERS PROSPECTUS



Xi'an Jiaotong-Liverpool University
西交利物浦大學

CONTENTS

3
FIND YOURSELF...

7
WHY XJTLU?

8
ACADEMIC QUALITY

9
DISTINGUISHED
FACULTY

13
EXPERIENCE CHINA

15
AWARD-WINNING
CAMPUS

17
STUDENT LIFE

19
ACCOMMODATION

21
BUDGET

23
STUDENT SUPPORT

25
CAREER OPPORTUNITIES

26
ADDITIONAL LEARNING
ACTIVITIES

27
ADMISSION TO XJTLU

29
PRESESSIONAL ENGLISH
(PSE) COURSE

31
HOW TO APPLY

33
MASTER'S
PROGRAMMES

DEPARTMENT OF ARCHITECTURE 41-46
Master of Architectural Design

DEPARTMENT OF BIOLOGICAL SCIENCES 47-50
MRes Molecular Bioscience

DEPARTMENT OF CHEMISTRY 51-54
MRes Advanced Chemical Sciences

DEPARTMENT OF CHINA STUDIES 55-58
MA China Studies

DEPARTMENT OF CIVIL ENGINEERING 59-64
MSc Civil Engineering
MSc Sustainable Construction

DEPARTMENT OF COMPUTER SCIENCE AND SOFTWARE ENGINEERING 65-74
MSc Applied Informatics
MRes Computer Science
MSc Social Computing
MSc Financial Computing

DEPARTMENT OF ELECTRICAL AND ELECTRONIC ENGINEERING 75-82
MRes Low Carbon Electrical Power and Energy Technology
MSc Multimedia Telecommunications
MSc Sustainable Energy Technology

DEPARTMENT OF ENGLISH 83-86
MA TESOL

DEPARTMENT OF INDUSTRIAL DESIGN 85-88
MDes Industrial Design

INTERNATIONAL BUSINESS SCHOOL SUZHOU 89-108

MSc Business Analytics
MSc Economics and Finance
MSc Finance
International MBA
MSc Investment Management
MSc Management
MSc Operations and Supply Chain Management
MSc Professional Accounting
MSc Project Management

DEPARTMENT OF MATHEMATICAL SCIENCE 109-112
MSc Financial Mathematics

DEPARTMENT OF URBAN PLANNING DESIGN 113-118
MSc Urban Planning (specialisation in Urban Design)
MSc Urban Planning

SCHOOL OF FILM AND TV ARTS 119-122
MSc Media and Communication

* **VERSION:** November 2019

For most up-to-date information, please visit: www.xjtlu.edu.cn

XI'AN JIAOTONG-LIVERPOOL UNIVERSITY



FIND YOURSELF... WITH A UK DEGREE IN CHINA



You are the future entrepreneur, scientist, architect, engineer, diplomat, researcher, educator or executive in our increasingly global environment.

You have a passion to understand other cultures and become a citizen of the world.

We want you.

At Xi'an Jiaotong-Liverpool University you will find an international community of learners in the heart of China's economic miracle – and opportunities found nowhere else on Earth.

XJTLU will help you develop into a global citizen with the skills, knowledge, abilities, temperament and tenacity to succeed in today's highly competitive and fast-changing world.

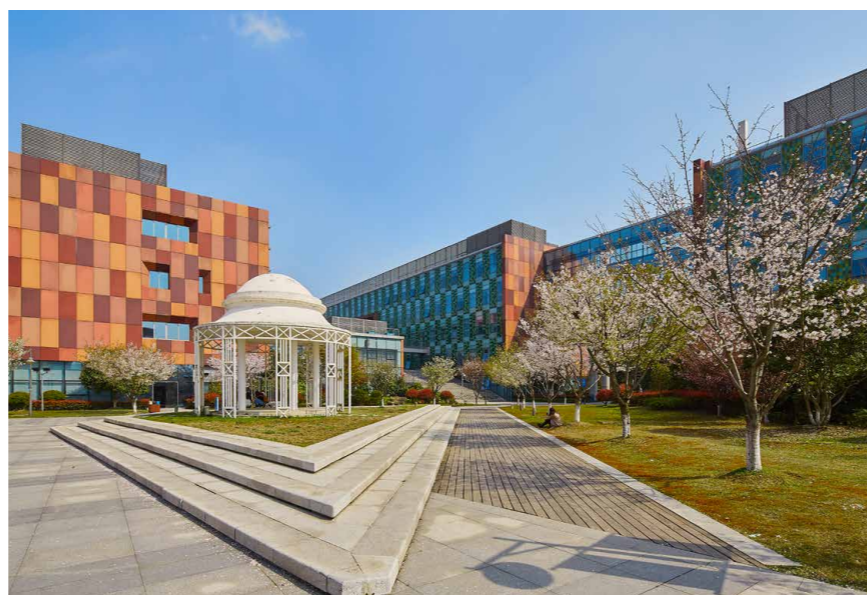
We look forward to welcoming you to XJTLU.

XJTLU AT A GLANCE



UK DEGREE FROM THE UNIVERSITY OF LIVERPOOL

Earn a globally recognised master's degree from the University of Liverpool, a member of the Russell Group of leading UK universities.



AN EXCITING RANGE OF PROGRAMMES

Study sciences, technology, engineering, mathematics, architecture, design and planning, language and culture, media and communications, business, finance or economics.



ENGLISH-TAUGHT

All programmes are taught 100 percent in English.



WORLD-CLASS CAMPUS

State-of-the-art facilities located on a beautifully landscaped campus.



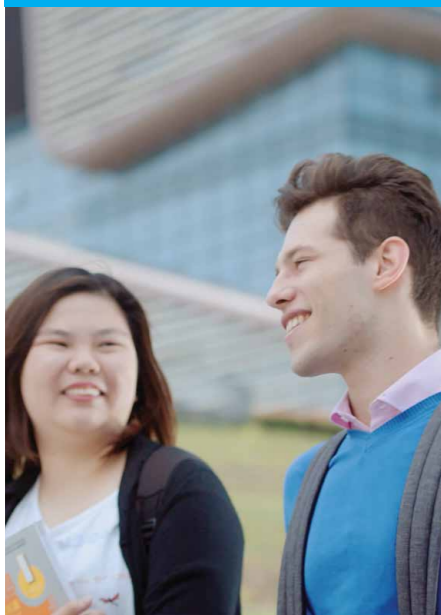
GROWING GLOBAL COMMUNITY

Almost 15,000 students and 650 academic staff from 50 countries...and counting!



LEARN CHINESE FOR TOP CAREER PROSPECTS

The opportunity to study Chinese language at all levels. Bilingual China experts are highly sought-after in the global job market.



SINO-BRITISH EXCELLENCE

Founded in 2006, XJTLU is the largest international collaborative university in China, combining the best of east and west.



LOCATED IN SUZHOU, CHINA

China's equivalent of Silicon Valley, a hub of global business and innovation just 25 minutes from Shanghai, sits alongside stunning 2,500 year-old UNESCO World Heritage gardens.

WHY XJTLU?

Xi'an Jiaotong-Liverpool University is a pioneering, international joint venture university. We are proud of our focus on research-led learning inherited from our two co-founding institutions: the University of Liverpool and Xi'an Jiaotong University.

ENGLISH LANGUAGE ENVIRONMENT ON CAMPUS

All degree programmes are taught 100 percent in English, making it easy to access your China experience while continuing your course of study.

MIX OF SUBJECTS ACROSS STEM, HUMANITIES AND SOCIAL SCIENCES

Study sciences, technology, engineering, mathematics, design and planning, architecture, public health, language and culture, China studies, business, finance, media and communications.

WORLD-CLASS CAMPUS

State-of-the-art facilities are located on a beautifully landscaped campus.

UK QUALITY ASSURANCE

XJTLU programmes are accredited and moderated by the University of Liverpool. With degree programmes across many subject areas, plus the China context, you're able to make the most of your academic experience abroad.

LEARN A NEW LANGUAGE

Alongside your degree, all international students can study Mandarin Chinese and are encouraged to pass HSK tests at the Suzhou testing center. If you already know Chinese, you can take top-up classes, or study Spanish or Japanese.



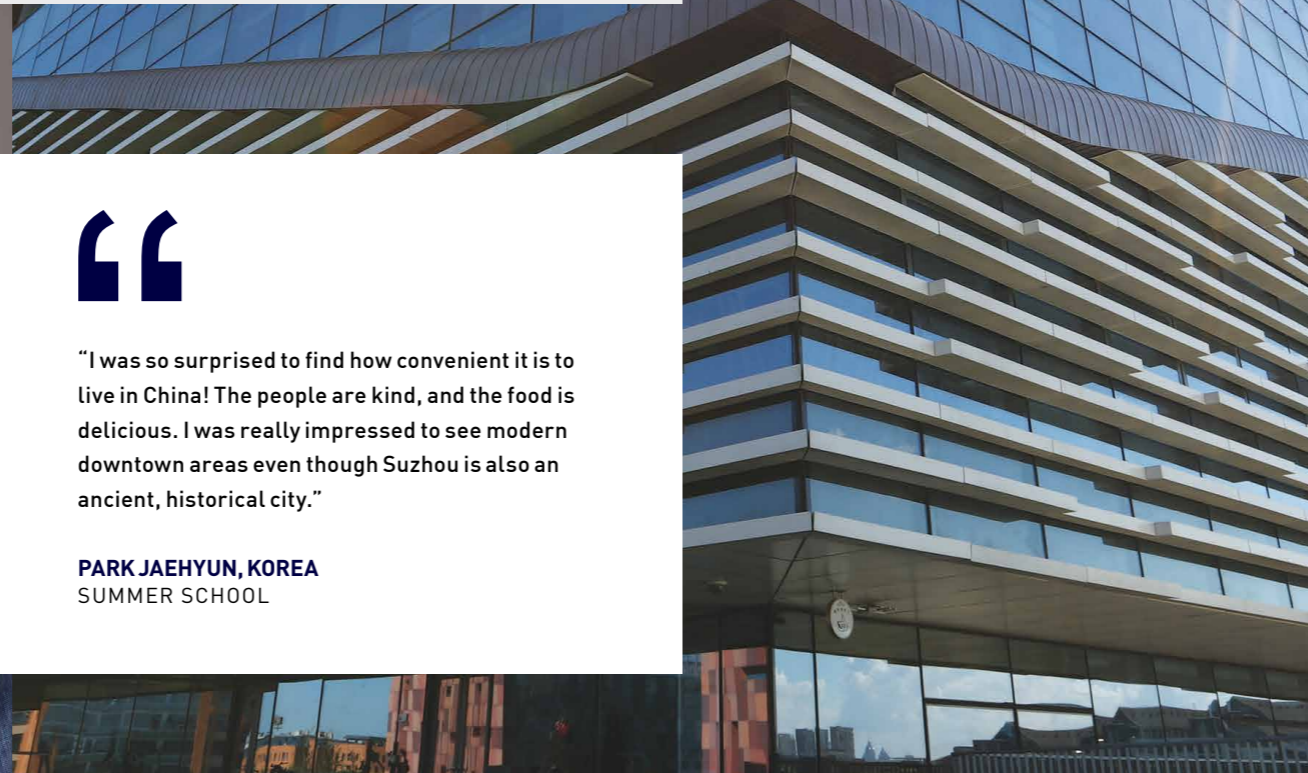
"I was so surprised to find how convenient it is to live in China! The people are kind, and the food is delicious. I was really impressed to see modern downtown areas even though Suzhou is also an ancient, historical city."

PARK JAEHYUN, KOREA
SUMMER SCHOOL

ACADEMIC QUALITY AND PROFESSIONAL RECOGNITION

Many of our programmes have also been recognised by prestigious academic and professional accrediting bodies such as AACSB International, EQUIS, the Royal Institute of British Architects (RIBA), Joint Board of Moderators, Royal Society of Biology and the Institution of Engineering and Technology (IET), for example.

We are one of the youngest universities in the world to have earned these accreditations.



DISTINGUISHED INTERNATIONAL FACULTY AND RESEARCHERS

XJTLU has almost 650 academic staff from more than 50 countries and regions, who have extensive international experience in industry and academia. They deliver cutting-edge research and teach current theories to prepare you for an excellent career.



PROFESSOR KAIZHU HUANG
ELECTRICAL AND ELECTRONIC ENGINEERING

An accomplished researcher, Professor Huang has published six books and more than 140 international research papers in the areas of data analytics and cognitive computing. His current research focus is in the area of machine learning, pattern recognition and information retrieval.



PROFESSOR ENG GEE LIM
ARTIFICIAL INTELLIGENCE
UNIVERSITY RESEARCH CENTRE

A Fellow and Charter Engineer of the Institute of Engineering and Technology and a Senior Fellow of Higher Education Academy, Professor Lim's research focusses on microwave engineering, artificial intelligence and robotics and their applications across a range of areas including smart homes and cities, cognitive wireless communications, energy harvesting, and health care.



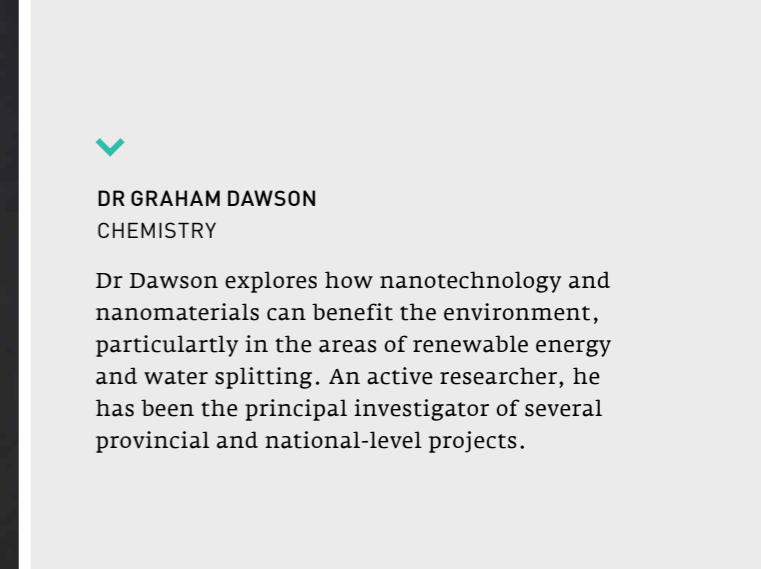
DR LUCIE L  V  QUE
COMPUTER SCIENCE AND SOFTWARE ENGINEERING

A Research Fellow in Computer Science and Software Engineering, Dr L  v  que's expertise lies in the intersection between psychology, computer science and design. She is currently exploring visual media quality assessment, visual attention, and medical image perception.



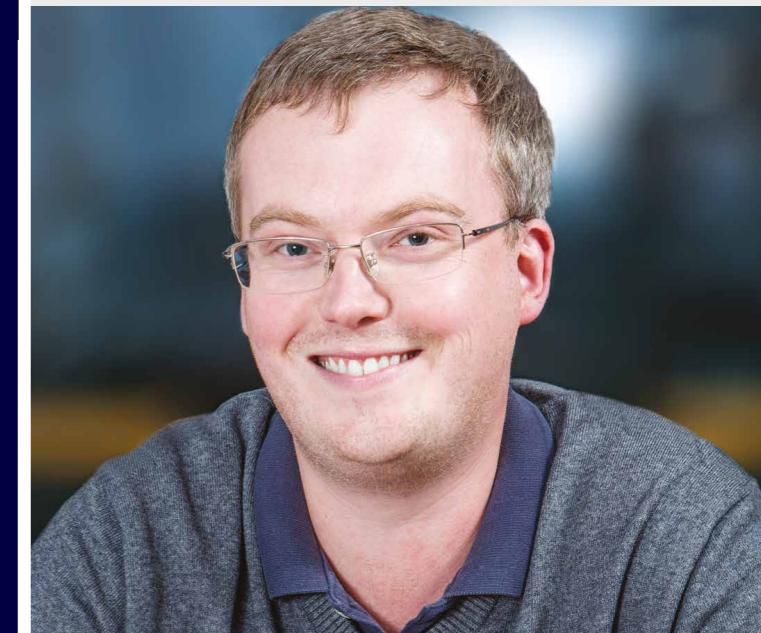
DR JUANN HUNG
INTERNATIONAL BUSINESS SCHOOL SUZHOU

A Senior Associate Professor in Economics, Dr Hung came to academia after more than two decades of industry experience working as a policy analyst and economist in the United States. Her current research looks at policy-related issues, including causes and consequences of currency crises, macroeconomic effects of globalisation, and China's growth model and its implications.



DR GRAHAM DAWSON
CHEMISTRY

Dr Dawson explores how nanotechnology and nanomaterials can benefit the environment, particularly in the areas of renewable energy and water splitting. An active researcher, he has been the principal investigator of several provincial and national-level projects.



PROFESSOR GISELA L  HLEIN
ARCHITECTURE

Professor Loehlein has extensive global experience in academia, government and as a practicing architect across Europe, Australasia and the Middle East. Her research interests lie in sustainability, design and tectonics in architecture.



PROFESSOR JOHANNES KNOPS
HEALTH AND ENVIRONMENTAL SCIENCES

Professor Knops' research looks at the drivers that control biodiversity and the importance of biodiversity in the functioning of ecosystems.

His current emphasis is on examining plant diversity in Qinghai-Tibetan alpine meadows and developing a framework to study biodiversity in a rapidly changing urban environment in China.



DR KONSTANTINOS PAPANIKOLAOU
CIVIL ENGINEERING

With a background in mechanical and chemical engineering, Dr. Papadikis' research investigates how numerical modelling techniques can optimise a range of process technologies, including fast pyrolysis, carbon capture, liquid collection and chemical reactor systems.



DR ALESSANDRA CAPPELLETTI
INTERNATIONAL RELATIONS

Dr Cappelletti's research interests are focussed on Chinese foreign policy in Central Asia, the Belt and Road Initiative, and agricultural development and agribusiness in North-West China. Her monograph on socio-economic development in Xinjiang is going to be published by Palgrave this year.



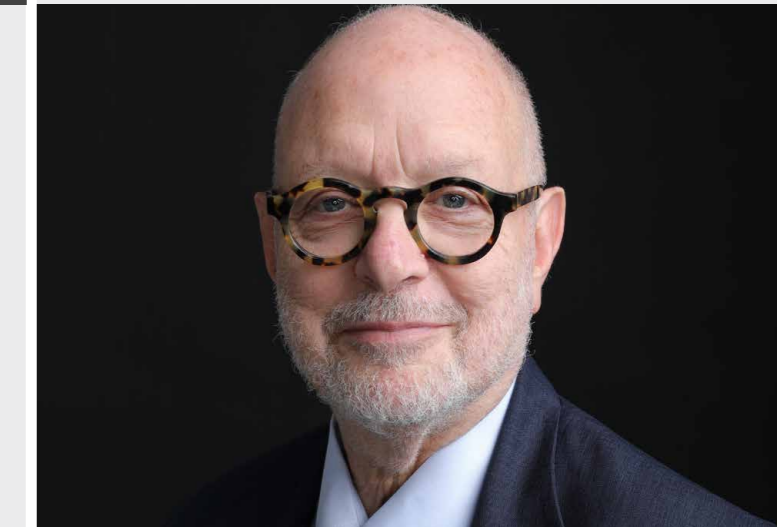
PROFESSOR DAVID GOODMAN
VICE PRESIDENT, ACADEMIC AFFAIRS

An accomplished academic with an impressive track-record in higher education management, Professor David Goodman's research work has concentrated on Sichuan, Guizhou, Shanxi, Gansu and Qinghai provinces of China over four decades. He has edited the book series *China in Transition* for Routledge since 1995; and the series *Handbooks of Research on Contemporary China* for Edward Elgar since 2012.



DR KEPING WU
CHINA STUDIES

With a background in anthropology, Dr Wu's current research focusses on issues of gender, religion and social memory in the urbanising areas of Suzhou.



DR GARRABOST DONALD JAYALAKSHMI
SCHOOL OF FILM AND TV ARTS

A filmmaker for 30 years, Dr Jaya is an experienced director, producer and writer. She teaches and works around the world as a documentary practitioner, previously for the BBC and now manages an independent production company.





EXPERIENCE CHINA

With the Chinese century upon us, no matter what career you pursue, China will play a role in your future in one way or another. How can first-hand experience of China make the difference for you?

CAREER PROSPECTS

Employers report that experience in China helps graduates stand out from the crowd. You'll develop an understanding of the world's second largest economy and inter-cultural skills that will give you a leg-up in your next job hunt.

FRIENDSHIPS AND NETWORKS

Studying abroad is fun! Not only will you experience new people, food, customs and travel, but you'll make new friends in China and from across the globe that will last a lifetime.

CULTURAL AWARENESS

China offers a continent full of diverse culture, food styles and dramatic scenery. Shanghai, Xi'an and Beijing are well within the range of a weekend trip. Spend more time and you can explore the Silk Road, traversing deserts, high plateau grasslands and glacial valleys. Or, visit giant pandas in Chengdu or Buddhist monks in Tibet. The possibilities are limitless!

LANGUAGE SKILLS

More than one billion people of the world's population speak Chinese, and it will become increasingly influential in the future. Learning Chinese language may be a part of your study path at XJTLU, but even scratching the surface will give you a greater insight into a fascinating and ancient society that will also contribute to your career prospects.

LIVE IN BEAUTIFUL SUZHOU

Suzhou is a fascinating mix of the ancient and the hypermodern; Blending together a bustling old town with canals, elegant 2,500 year-old UNESCO World Heritage gardens, new lakeside areas with stunning malls, skyscrapers, shops and restaurants; and one of Asia's leading research and innovation hubs. Suzhou's weather is cold in winter and hot in summer.

XJTLU CAMPUS

XJTLU is located in the modern, clean and safe Suzhou Industrial Park area, China's equivalent of Silicon Valley and a hub of global education, business and innovation with more than 20 universities, 5,000 foreign owned enterprises and Fortune 500 companies to bring real-life opportunity into the classroom.

SHANGHAI

Located just 25 minutes by bullet train from Suzhou, Shanghai is one of Asia's most glamorous cities with over 25 million people and one of the most vibrant economic, cultural and nightlife scenes in the world. Be a part of the action in this global hub of finance, arts, fashion and food.

KEY FACTS

LOCATION	JIANGSU PROVINCE, EAST CHINA
POPULATION	11 MILLION
GDP	RMB 1.3 TRILLION (USD 190 BILLION)
TIME ZONE	GMT +8 HOURS
WEATHER	JANUARY (1-5 C) JULY (28-35 C)
AIRPORTS	SHANGHAI HONGQIAO (74KM) SHANGHAI PUDONG (123KM) WUXI SUNAN SHUOFANG (51KM)



"Suzhou is ideally located as a gateway for you to travel across China and Asia. The diversity of people at XJTLU gives you the opportunity to meet other like-minded students from around the world."

ANNA HALL, UK
CHINESE LANGUAGE
SUMMER SCHOOL

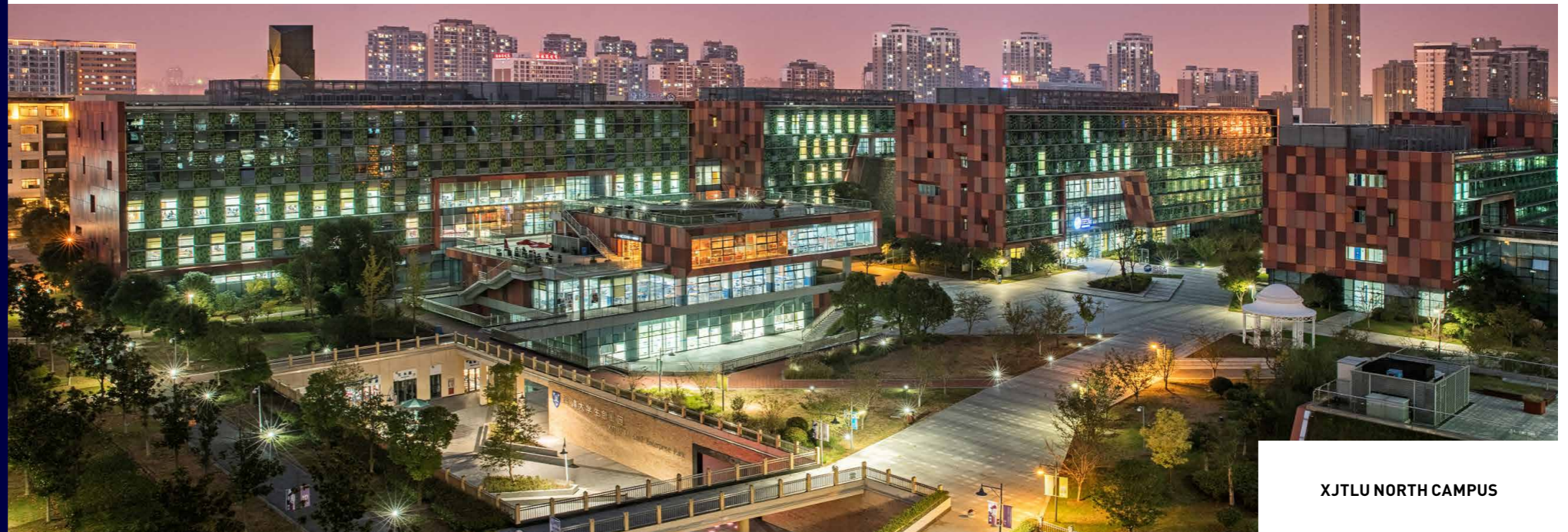


AWARD-WINNING CAMPUS

The XJTLU campus provides state-of-the-art teaching, laboratory, research and support facilities.

This includes the award-winning Central Building, which houses the fully-resourced XJTLU Library.

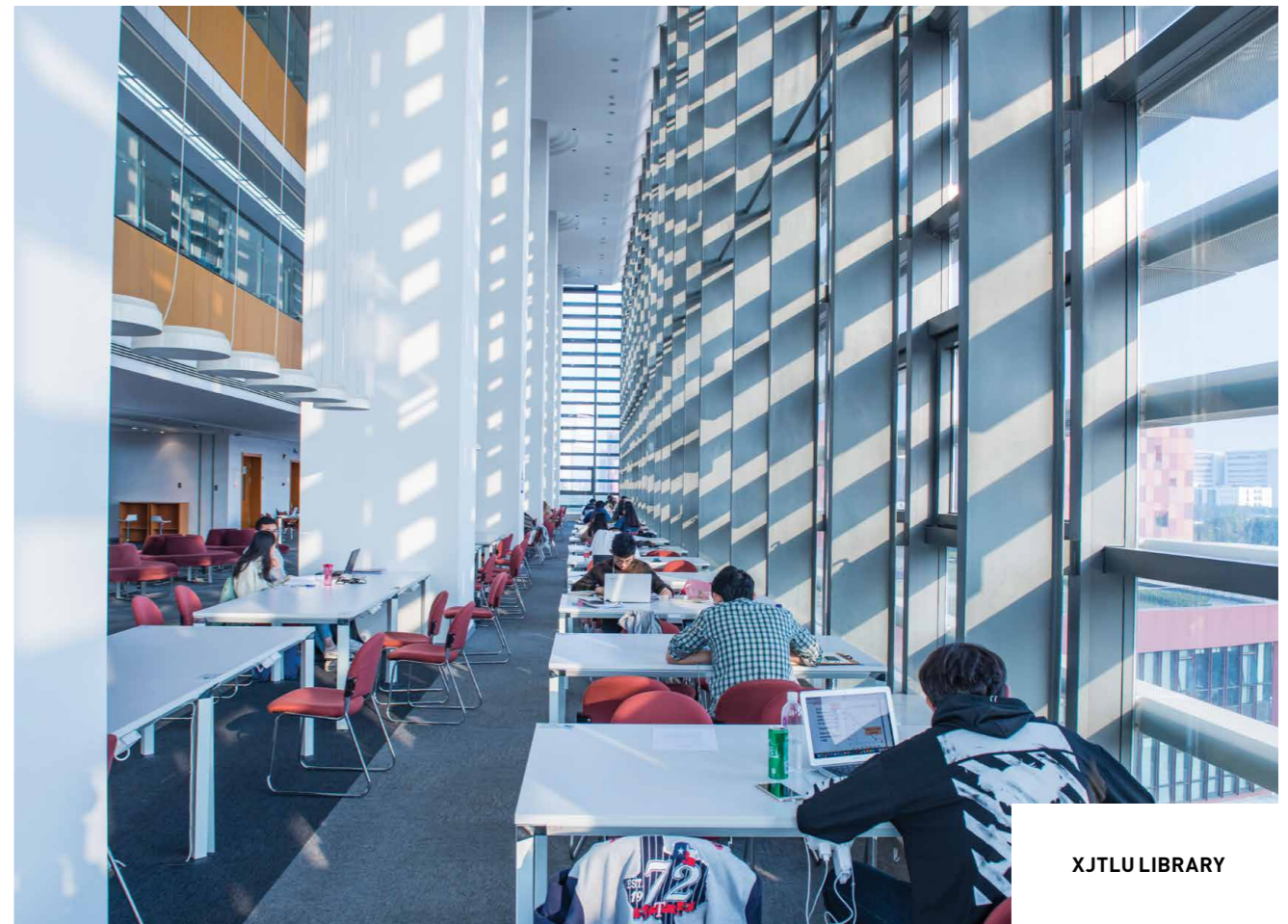
In addition to the world-class science and engineering laboratories, design and media studios, and communications laboratories, our campus also has conference facilities, tennis and basketball courts, multi-purpose sports centre, playing ground, running track, and a variety of catering facilities.



XJTLU NORTH CAMPUS



XJTLU SOUTH CAMPUS



XJTLU LIBRARY

STUDENT LIFE

An education at XJTLU brings with it not only outstanding academic opportunities, but also the chance to expand one's horizons socially and culturally.

XJTLU students study hard, but they also lead full and ambitious lives between classes. Student clubs and societies play an important role at XJTLU with more than 120 organisations centred on art, sports, entrepreneurship, social service, academia and science to name but a few.

XJTLU hosts a model United Nations, and the Student Union plays an active role in shaping campus life and academic experiences. We also have an arts centre that gives students the opportunity to get involved in a range of creative activities. The campus has its own student enterprise park where students can try starting their own businesses or simply enjoy the shops and services.

You'll also have the chance to travel through China's vast and beautiful landscape and experience the depth of its ancient culture.



XJTLU SPORTS CENTRE

SELECTION OF STUDENT CLUBS AND ACTIVITIES

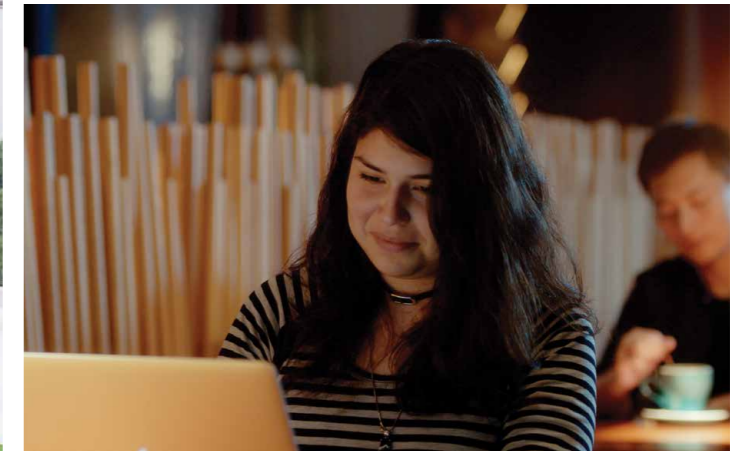
- ACTION! GREENER
- ART TRAINING CENTRE
- BILLIARDS CLUB
- BIOSCIENCE CLUB
- BUDDY PROGRAMME
- COMMUNICATION SOCIETY
- CRICKET CLUB
- DEBATING CLUB
- HISTORY CLUB
- KARATE CLUB
- LEMEI CHARITY
- LOX-TV
- MODEL UNITED NATIONS
- STUDENT UNION
- SCIENCE & INNOVATION ASSOCIATION
- STUDENT AMBASSADOR ASSOCIATION
- STUDENT ENGLISH ASSOCIATION
- STUDENT NEWS CENTRE
- VOLUNTEER ASSOCIATION
- ULTIMATE FRISBEE CLUB

SPORTS FACILITIES

- RUNNING TRACKS
- TENNIS COURTS
- BASKETBALL COURTS
- FOOTBALL FIELDS
- INDOOR GOLF PRACTICE
- SPORTS HALL
- FITNESS AND WEIGHTS
- ROCK CLIMBING WALL
- DANCE AND YOGA STUDIOS

FOOD AND SHOPPING

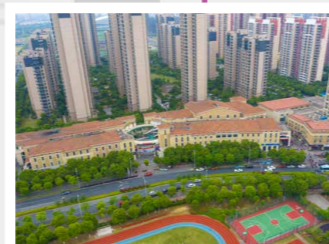
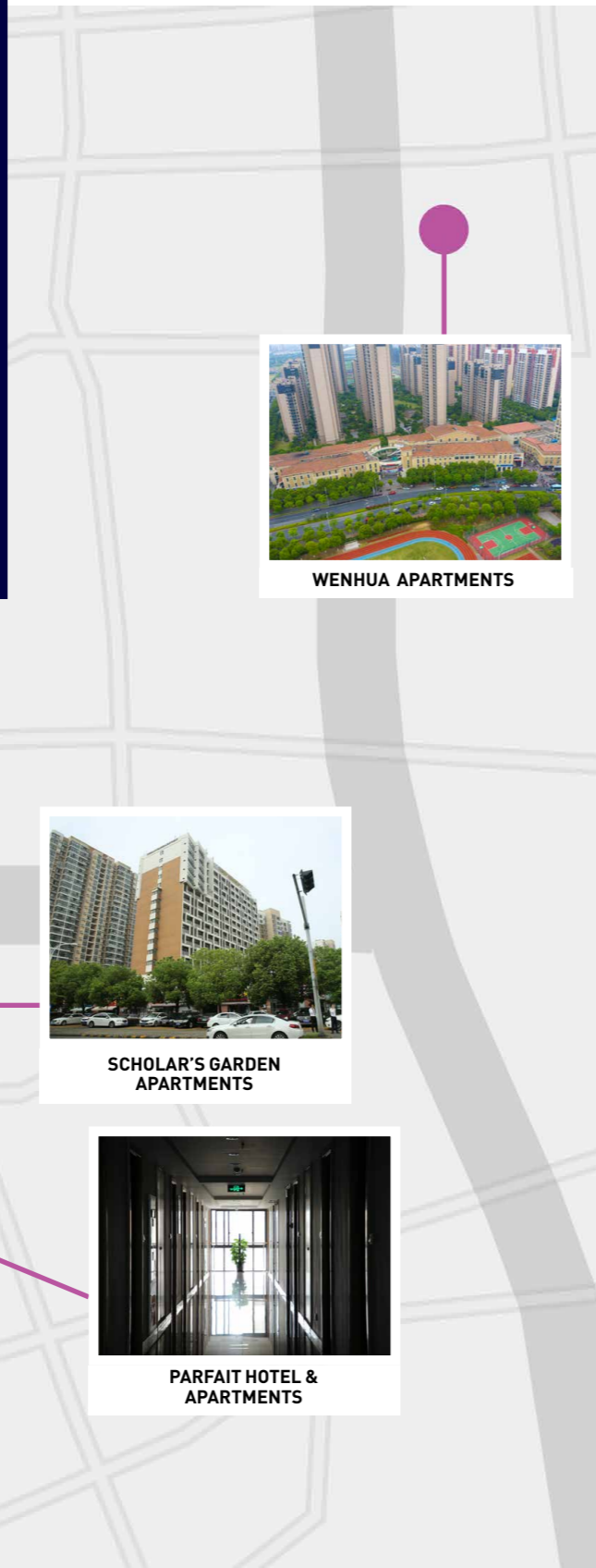
- CANTEENS AND COFFEE SHOPS
- BARS AND RESTAURANTS
- DOWNTOWN SUZHOU



ACCOMMODATION

The accommodation facilities are located between 5 to 20 minutes from campus and cater to different living styles from private hotel standard rooms to functional single en-suites with shared communal facilities.

After you receive your offer, you can book your accommodation using our booking system. Accommodation is guaranteed, however availability varies and choice is on a first come, first serve basis.



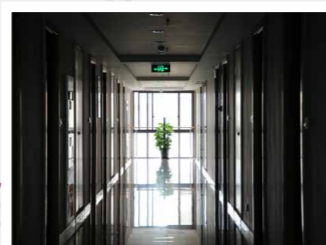
WENHUA APARTMENTS



MBA APARTMENTS



SCHOLAR'S GARDEN APARTMENTS



PARFAIT HOTEL & APARTMENTS



PARFAIT INTERNATIONAL APARTMENTS

	 Kitchen	 En-suite bathroom option	 Prices per month	 Distance to Campus
WENCUI: PARFAIT INTERNATIONAL APARTMENTS				
	Yes, shared	Private	1488-2170 RMB (\$USD 209-305)	1km
WENCUI: PARFAIT HOTEL & APARTMENTS				
	Only microwave and fridge	Private	2046-3100 RMB (\$USD 287-435)	1km
MBA APARTMENTS				
	No	Shared by 3 students	1333-1922 RMB (\$USD 187-270)	1km
SCHOLAR'S GARDEN APARTMENTS				
	Yes	Private	2542-3162 RMB (\$USD 356-443)	1km
WENHUA APARTMENTS				
	Yes, shared	Private	1550-2170 RMB (\$USD 218-304)	7km

BUDGET

Suzhou is a beautiful, safe, modern affordable city just 24 minutes from Shanghai, and was recently rated in the Economist magazine as the 'most liveable city in mainland China'. You get all the benefits of living a big city but without the high costs.

Compared to other modern cities around the world, living costs are much lower in Suzhou.

Below are three sample lifestyles which you can refer to when planning your budget.



CUP OF COFFEE
15 - 35 RMB
(US\$ 2 - 5)



CANTEEN LUNCH
20 RMB
(US\$ 3)



FAST FOOD
35 RMB
(US\$ 5)



CINEMA TICKET
50 - 80 RMB
(US\$ 7 - 11)



HAIRCUT
25 - 200 RMB
(US\$ 3.50 - 28)



SWIMMING ACCESS
15 - 35 RMB
(US\$ 1.50 - 2)



BUS TICKET
1 - 2 RMB
(US\$ 0.15 - 0.30)



SUBWAY TICKET
2 - 7 RMB
(US\$ 0.35 - 1)



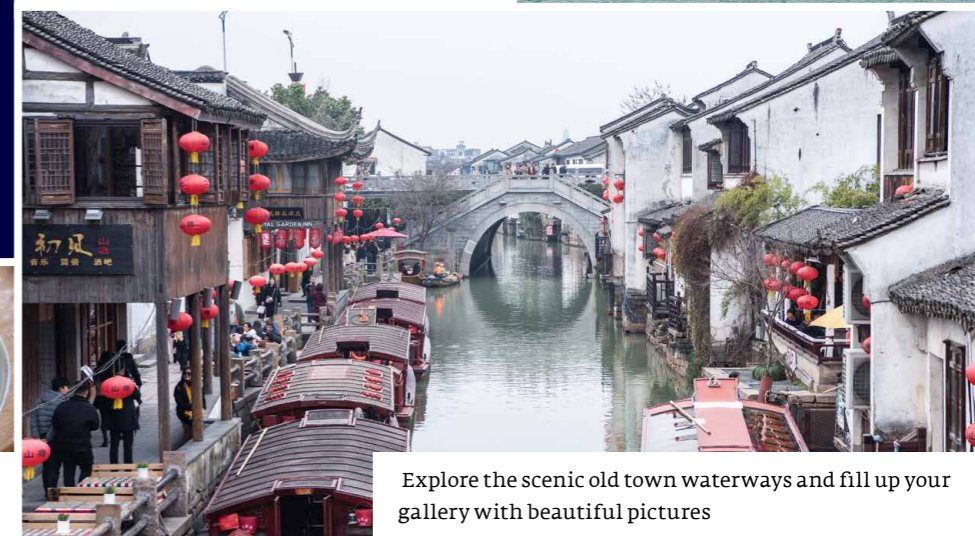
TRAIN TO SHANGHAI
40 RMB
(US\$ 5.50)

LIVING AT XJTLU

Work hard and play hard at XJTLU. Your time outside the classroom is full of possibilities, adventure and new experiences.



Enjoy a cup of coffee with a serene view at the Jinji and Dushu lake area



Explore the scenic old town waterways and fill up your gallery with beautiful pictures



Try delicious local Chinese dishes from small vendors and traditional restaurants

LIFESTYLE A

Lives in university dorms and lives cheaply. Only eats food from the university canteen, avoids nightlife, and occasionally takes the bus or metro around town.

LIFESTYLE B

Lives in university dorms and lives cheaply during the week, but occasionally treats themselves. Enjoys nightlife once a month. Normally takes the bus but will take a few taxis each month.

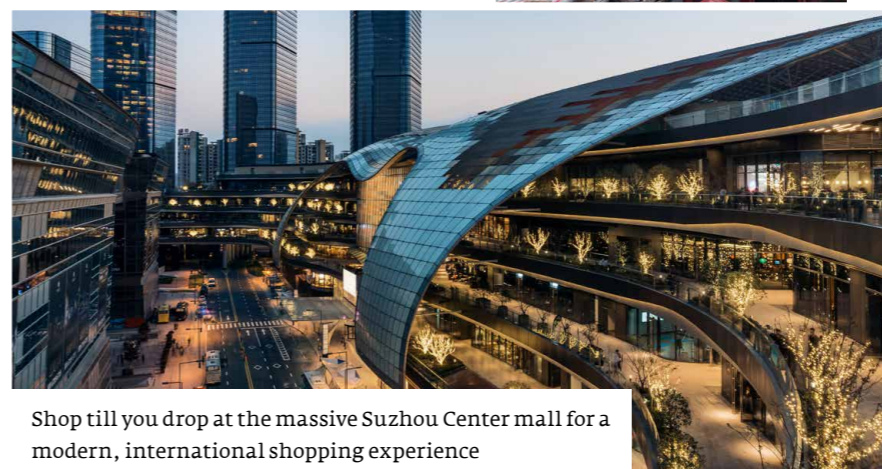
LIFESTYLE C

Lives in a private apartment and lives a full lifestyle. Eats in a variety of restaurants and enjoys nightlife each week. Owns an electric bike and often takes the taxi.

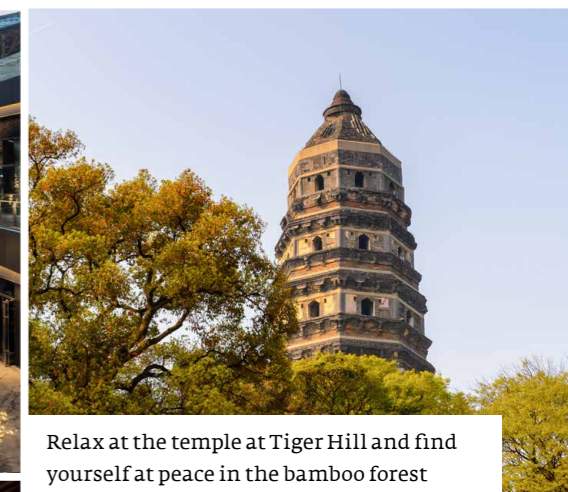
RENT	1500	1500	3000
UTILITIES	300	300	500
FOOD	1000	2000	3000
TRANSPORT	100	200	500
LUXURIES	200	500	1000
TOTAL MONTHLY	3100 RMB (around USD\$440)	4500 RMB (around USD\$630)	8000 RMB (around USD\$1120)

In addition to your tuition fees, travel and monthly living costs, you should also allocate budget for:

- Service charges (textbooks, ID cards, printing etc.) : 1000 RMB / semester
- Visa/residence permit costs (varies for each country) : 500-1000 RMB
- Emergency medical costs (insurance is indirect billing, so you are strongly recommended to keep some money for emergency cases) : 1000-5000 RMB



Shop till you drop at the massive Suzhou Center mall for a modern, international shopping experience



Relax at the temple at Tiger Hill and find yourself at peace in the bamboo forest



Venture to the magical Humble Administrator's Garden – a UNESCO world heritage site



Take a short trip on the weekend and explore Shanghai with your friends

STUDENT SUPPORT

The XJTLU Global team provides a range of services to help make your experience at XJTLU go as smoothly as possible. XJTLU Global is the first service point for all international and Hong Kong, Macao and Taiwan students at the University.

VISA AND ACCOMMODATION

XJTLU Global will provide support for arranging your visa and accommodation.

AIRPORT MEET-AND-GREET

XJTLU Global organises a pick-up service for all new international students arriving in China at Shanghai Pudong airport. This service is available during three days of welcome week.

INDUCTION

The induction activities aim to familiarise you with the local area and campus. You will have the opportunity to meet current students during this time, as well as at various social events and societies and clubs introductions.

ENGLISH LANGUAGE SUPPORT

The Language Centre provides continuing support courses to help you with any English language and study skills issues you may find during your studies. Continuing support focuses on academic literacies, study skills, and learning techniques, helping you to bridge the gap between English study and academic subject-specific study.

CHINESE CLASSES

The Language Centre also provides free Chinese language classes to all full-time international students delivered by our globally recognised Language Centre.

CAREER SERVICES

The Career Development Office provides students with support in preparing for successful future careers and assists with work placements and job searches. Their services include lectures and seminars, CV and cover letter advice, workshops on interview techniques, business plans, and career planning. The office also arranges external mentoring with industry professionals as well as maintaining a careers library with books and journals on career planning, together with IT resources to help you with your post-graduation job search.

ALUMNI

When you graduate from XJTLU, you will not only join a growing network of XJTLU alumni, but you will also become a member of the global community of more than 100,000 University of Liverpool alumni in over 130 countries.

STUDENT HELPERS

All students are assigned a friendly 'buddy' to help you get familiar with the campus during your first few weeks and months. You also have the option to pair up with a language partner to learn a second language.

ENTREPRENEURSHIP

With guidance from the Career Development Office and XJTLU Innovation Hub, many students take advantage of the XJTLU Student Enterprise Park to develop their own products and start-up companies.

EXTERNAL MENTOR PROGRAMME

We invite experienced professionals from Chinese and International companies to act as external mentors to provide guidance on the skills that are necessary for your future career.



"Life has never been this good. With extremely warm and friendly staff as well as the locals, it's not hard to absolutely love what this university and this city has to offer."

SUHAILA SULEIMAN, KENYA
BEng TELECOMMUNICATIONS
ENGINEERING



"China is amazing! I feel the people are so welcoming and the atmosphere is definitely more relaxed than the UK. As a minority, you instantly develop a fan base, so bring your good side as there will be lots of pictures!"

KRYSTINA MHLANDHLA, UK
SUMMER SCHOOL



CAREERS OPPORTUNITIES

XJTLU students have numerous job opportunities around the world after they graduate.

Graduates work at institutions and enterprises including the 'Big Four' accounting and consulting firms, foreign-owned banks, financial institutions, foreign-owned manufacturing and developing firms, and large and medium-sized state-owned enterprises.

We are located in Suzhou Industrial Park, which houses more than 5,000 international enterprises and Fortune 500 companies.

Here are some of the global companies where our graduates have received offers of employment.

Microsoft
Google
Apple
Intel
Amazon
Ford
JP Morgan Chase
IBM
Shell
Accenture
Procter & Gamble
Procter & Gamble
L'Oréal

PricewaterhouseCoopers
KPMG
Ernst & Young
Deloitte

HSBC
Standard Chartered Bank
Swiss Bank
Royal Bank of Scotland

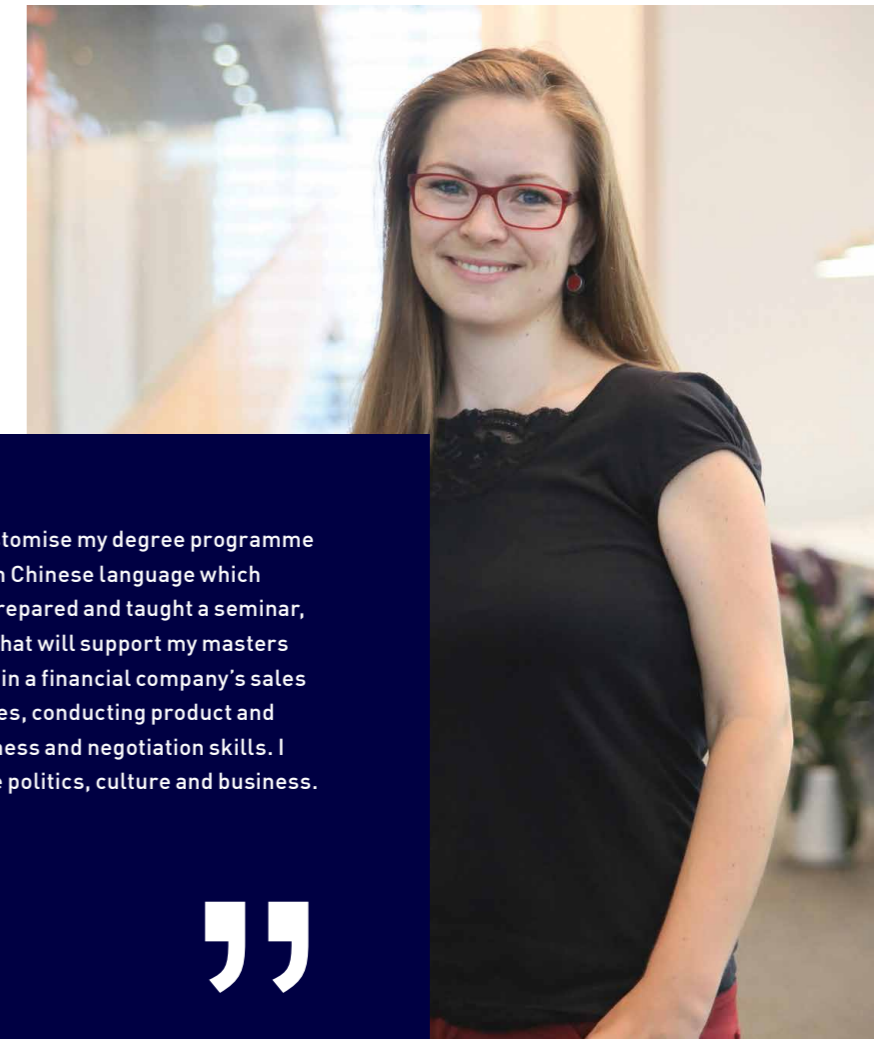
Lenovo
Huawei
ZTE
Baidu
Alibaba
SAIC

ADDITIONAL LEARNING ACTIVITIES

Additional Learning Activity, or 'ALA', provides enrichment of both theoretical and experiential learning during your masters programme study at XJTLU. ALAs are non-credit and pass/fail. ALAs are prescribed for each programme including some activities that may be jointly developed with your academic advisor. 200 hours per semester are required to complete your masters degree.

TYPICAL ALAs INCLUDE BUT ARE NOT LIMITED TO:

- Language study in Chinese, English, Spanish or another language
- Additional online and in-person modules on culture, business, technical skills or other topics that complement your primary study area
- Delivery of teaching as a graduate teaching assistant
- Engagement in a research project as a graduate research assistant
- Internship or private sector consulting project
- Professional and employment skills development
- Field trips
- Community engagement.



"The ALA requirement empowered me to customise my degree programme to my own interests. I've focused primarily on Chinese language which will be valuable for my future career. I also prepared and taught a seminar, and next semester I plan to do an internship that will support my masters degree thesis. One of my classmates worked in a financial company's sales department in Suzhou managing channel sales, conducting product and industry research and gaining valuable business and negotiation skills. I also attended a variety of courses on Chinese politics, culture and business. The possibilities are endless!"

FRANZISKA BERTRAM
MSC MANAGEMENT



ADMISSION TO XJTLU





THE PRESESSIONAL COURSE IS A GREAT WAY TO BEGIN YOUR POSTGRADUATE STUDIES AND MANY STUDENTS CHOOSE TO ENROLL EVEN IF THEY HAVE MET THE LANGUAGE REQUIREMENTS. WE ADVISE YOU TO REGISTER EARLY FOR THIS POPULAR COURSE.

SYLLABUS

The course will focus on transferable academic skills and language, with typical content covering:

WRITING:

Adopting a process approach to your writing

Writing clear and well-organised paragraphs and essays

Referencing and understanding principles of Academic Integrity

Paraphrasing, summarising and quoting

Improving awareness of academic style

Improving cohesion and coherence in your writing

SPEAKING:

Giving academic presentations

Participating in academic seminar discussions

Using appropriate functional language in your academic speaking

Using information from sources in academic discussions and presentations

READING:

Skimming, scanning, getting the gist

Identifying important information and selecting key ideas

Evaluation of texts (including critical analysis of author, bias, purpose, genre, etc.)

LISTENING:

Following and taking notes in a lecture

Strategies to deal with lecture listening

ACADEMIC SKILLS:

Reflection

Time management

Conducting secondary research

Critically evaluating sources

Creating Powerpoint presentations

Editing your work

PRE-SESSIONAL ENGLISH (PSE) COURSE

The XJTLU Pre-sessional English (PSE) courses are designed to develop the English language and academic study skills necessary to meet the challenges of studying at Master's level. These include academic writing, general listening and speaking, research, critical evaluation and writing for specific audiences.

ABOUT THE COURSES

The courses run for five to eight weeks and are comprised of approximately 100 or 160 hours of teaching and 75 or 120 hours of self-study.

WHO SHOULD TAKE PSE?

If you miss the language requirements for your programme by 0.5 - 1 of IELTS (or equivalent) but fulfil the minimum component scores specified for the programme, you may be accepted onto the Pre-sessional English summer course subject to Programme Director approval. Upon successful enrolment on the Pre-sessional English summer course, you will be able to change your XJTLU Master's offer letter to 'Unconditional' for English level. Students who successfully complete PSE will not need to retake IELTS or TOEFL.

TUITION FEES

Five-week course – RMB 15,000
Eight-week course – RMB 23,000

Students who pay their fees and deposit by 31 May will receive a 20 percent discount of their PSE fee.

PRELIMINARY SCHEDULE

Five-week course - Late July to late August
Eight-week course - Early July to late August



HOW TO APPLY

APPLICATIONS ARE ACCEPTED ONLINE. PLEASE CHECK THE WEBSITE FOR DETAILS:

www.xjtlu.edu.cn/en/find-a-programme/?lev=othercourses

HOW TO APPLY FOR A MASTER'S DEGREE

ENTRY REQUIREMENTS

The minimum entry requirement is a UK upper second class (2:1) or equivalent. However, admission requirements vary depending on the programme you choose.

ENGLISH LANGUAGE REQUIREMENTS

Master's students at XJTLU should have a high level of proficiency in the English language. Non-native speakers will typically require a minimum IELTS score of 6.0 (TOEFL iBT: 80) up to IELTS 7.0 (TOEFL iBT: 100). Students who completed a full-time degree programme delivered wholly in English will normally be exempt from the English language requirements.

If you miss the language requirements by 0.5-1.0 of IELTS then you can still apply for XJTLU by successfully completing a summer Pre-Sessional English (PSE) course at the University.

APPLY ONLINE

All applicants should apply via our online application system. To begin, simply choose your programme on our website and click the "apply" button. You will then be prompted to create an account, complete the application form, upload the required documents and submit. You may save and re-log in to your application form at any time and upload any remaining supporting documents.

Visit: www.xjtlu.edu.cn



THE CLOSING DATE FOR
SEPTEMBER 2020 INTAKE IS
15 JUNE 2020 (INTERNATIONAL)
30 JUNE 2020 (MAINLAND CHINA)

CHECKLIST

- Certificates of education qualifications and transcripts
- Certificates of English language qualification (If applicable)
- Personal Statement
- Two letters of reference
- Scholarship application letter (Optional)
- Photocopy of your passport or ID

TUITION FEES

Tuition fees vary by programme and range from 90,000 RMB to 260,000 RMB. You must secure your place at XJTLU by paying a nonrefundable deposit of 10,000 RMB, which is deducted from the total tuition fee.

Payments can be paid in installments every semester. Students who choose to pay in full upfront at the time of registration, will be entitled to a discount of 5% of the total tuition fee.

ALUMNI DISCOUNT

Graduates of XJTLU, the University of Liverpool or Xi'an Jiaotong University will automatically receive a tuition fee discount of 20 percent.

Applications will be considered as they are received and we encourage you to submit your application well in advance of the deadline. Please refer to the relevant programme page on our website for details.

Note: The University reserves the right to modify programmes at any time in response to unforeseen circumstances, feedback and review. The University also reserves the right to not offer programmes with low enrolments. For the latest information, please visit our website.

MASTER'S DEGREE PROGRAMMES

Our master's degrees, awarded by the University of Liverpool, equip you with the skills and knowledge to pursue your career in a relevant field, or conduct pioneering research in an academic or industrial setting.

You can customise your degree with an 'additional learning activity' such as foreign language study, teaching, research,

internship, training or community engagement.

All degrees are taught in English by world-class international academic staff and industry experts, and range from 18 months (full time) to 36 months (part time).

Tuition fees vary by programme and generous scholarships are available.



SCAN TO VIEW ALL OF OUR DEGREE PROGRAMMES
www.xjtlu.edu.cn/en/find-a-programme/?lev=masters

DEPARTMENT	PROGRAMME	DURATION	TUITION FEES	ENTRY REQUIREMENTS
ARCHITECTURE	● MASTER OF ARCHITECTURAL DESIGN P43	24 months (full-time)	RMB 160,000	An undergraduate degree (UK 2:1 or equivalent) in BArch, BEng in Architecture, BA (Hons) in Architecture or equivalent. Applicants are required to submit a portfolio of their own creative works as a student and a practicing architect/intern (indicating where and when the work was done, who the tutor/supervisor was, who was part of the team and what the applicants' role was in the team, A3-size, typically 10 to 30 pages, in PDF format). An internship in an architecture-related practice is recommended, but not required. We might accept applicants with substantial work experience or an outstanding portfolio even if their grades are lower than the minimum entry requirements.
BIOLOGICAL SCIENCES	■ MRES MOLECULAR BIOSCIENCE P47	18 months (full-time)	RMB 90,000	An undergraduate degree (UK 2:1 or equivalent) in a life science-related discipline.
CHEMISTRY	■ MRES ADVANCED CHEMICAL SCIENCES P51	18 months (full-time)	RMB 90,000	An undergraduate degree (UK 2:1 or equivalent) in chemistry or a related discipline.
CHINA STUDIES	▲ MA CHINA STUDIES P55	18 months (full-time)	RMB 90,000	An undergraduate degree (UK 2:1 or equivalent) in any discipline.
CIVIL ENGINEERING	● MSC CIVIL ENGINEERING P59	18 months (full-time), 36 months (part-time)	RMB 90,000	An undergraduate degree (UK 2:1 or equivalent) in a relevant field such as civil engineering or a related programme.
	● MSC SUSTAINABLE CONSTRUCTION P61	18 months (full-time), 36 months (part-time)	RMB 90,000	An undergraduate degree (UK 2:1 or equivalent) in a relevant field such as civil engineering or a related programme.

ENGLISH REQUIREMENTS

- IELTS: 6.0 (minimum of 5.0 in all sections) / TOEFL iBT:80
- IELTS: 6.5 (minimum of 5.5 in all sections) / TOEFL iBT:90, minimum of 21 in any skill
- ▲ IELTS: 7.0 (minimum of 6.0 in all sections) / TOEFL iBT:100, minimum of 21 in any skill
- ◆ IELTS: 7.0 (minimum of 7.0 in all sections) / TOEFL iBT:100, minimum of 21 in any skill

MINIMUM ENTRY REQUIREMENTS

UK: 2:1 or equivalent
 China: Overall weighted average 75-85%, depending on the institution.
 North America: GPA 3.0 out of 4 or 3.2 in the final two years of UG study

DEPARTMENT	PROGRAMME	DURATION	TUITION FEES	ENTRY REQUIREMENTS
COMPUTER SCIENCE AND SOFTWARE ENGINEERING	■ MSC APPLIED INFORMATICS P65	18 months (full-time)	RMB 90,000	An undergraduate degree (UK 2:1 or equivalent) in information and computing science, information and management systems, or related fields such as engineering or finance.
	● MRES COMPUTER SCIENCE P67	18 months (full-time)	RMB 90,000	An undergraduate degree (UK 2:1 or equivalent) in a computer science-related discipline with suitable programming and programme design experience.
	■ MSC SOCIAL COMPUTING P69	18 months (full-time)	RMB 90,000	An undergraduate degree (UK 2:1 or equivalent) in computer science, engineering, information systems, e-business, or mathematics, with suitable programming and programme design experience.
	■ MSC FINANCIAL COMPUTING P71	18 months (full-time)	RMB 90,000	An undergraduate degree (UK 2:1 or equivalent) in a relevant area such as computer science, finance and investment, information systems, e-business and mathematics, with some programming and program design experience.
ELECTRICAL AND ELECTRONIC ENGINEERING	■ MRES LOW CARBON ELECTRICAL POWER AND ENERGY TECHNOLOGY P75	18 months (full-time)	RMB 90,000	An undergraduate degree (UK 2:1 or equivalent) in a relevant field, such as: electrical engineering, telecommunication engineering, computer science and technology, mathematics, semiconductor physics, automation and control, embedded systems, thermal physics, and other related majors.
	■ MSC MULTIMEDIA TELECOMMUNICATIONS P77	18 months (full-time)	RMB 90,000	An undergraduate degree (UK 2:1 or equivalent) in a relevant field such as telecommunication engineering, electronic science and technology, electrical engineering, and computer science and technology.
	■ MSC SUSTAINABLE ENERGY TECHNOLOGY P79	18 months (full-time)	RMB 90,000	An undergraduate degree (UK 2:1 or equivalent) in a relevant field such as electrical engineering, electronic science and technology, telecommunication engineering, computer science and technology, mathematics, semiconductor physics, automation and control, embedded systems, engineering thermal physics or other related disciplines.

DEPARTMENT	PROGRAMME	DURATION	TUITION FEES	ENTRY REQUIREMENTS
ENGLISH	▲ MA TESOL P83	18 months (full-time), 30 months (part-time)	RMB 90,000	An undergraduate degree (UK 2:1 or equivalent) in a relevant field such as English, linguistics, or education and literature. No teaching experience is required, but some relevant teaching experience at secondary or tertiary level would be an advantage.
INDUSTRIAL DESIGN	● MDES INDUSTRIAL DESIGN P87	18 months (full-time), 30 months (part-time)	RMB 90,000	An undergraduate degree in industrial design, engineering, architecture, urban planning and design, or other design-related discipline.
	● MSC BUSINESS ANALYTICS P91	18 months (full-time)	RMB 120,000	An undergraduate degree (UK 2:1 or equivalent) in economics, management, finance, marketing, science or engineering. Prior knowledge of econometrics is desirable, but not essential.
	● MSC ECONOMICS AND FINANCE P93	18 months (full-time)	RMB 120,000	An undergraduate degree (UK 2:1 or equivalent) in finance, accounting, economics, management, science or engineering and some understanding of quantitative methods, statistics or econometrics.
INTERNATIONAL BUSINESS SCHOOL SUZHOU	● MSC FINANCE P95	18 months (full-time)	RMB 120,000	An undergraduate degree (UK 2:1 or equivalent) in finance, accounting, economics, management, science or engineering and some understanding of quantitative methods, statistics or econometrics.
	● INTERNATIONAL MBA P97	24 months (part-time)	RMB 260,000	The ideal candidate is a manager with eight years' work experience, some of which should be in a managerial position, and an undergraduate degree (UK 2:1 or equivalent) in any discipline.
	● MSC INVESTMENT MANAGEMENT P99	18 months (full-time)	RMB 120,000	An undergraduate degree (UK 2:1 or equivalent) in mathematics, finance, or a related subject. Or relevant work experience and a good knowledge of quantitative methods, statistics or financial mathematics.

DEPARTMENT	PROGRAMME	DURATION	TUITION FEES	ENTRY REQUIREMENTS
	● MSC MANAGEMENT P101	18 months (full-time)	RMB 120,000	Bachelor Degree in business related subjects (perferred).
	● MSC OPERATIONS AND SUPPLY CHAIN MANAGEMENT P103	18 months (full-time), 36 months (part-time)	RMB 120,000	An undergraduate degree (UK 2:1 or equivalent) in any discipline.
INTERNATIONAL BUSINESS SCHOOL SUZHOU	● MSC PROFESSIONAL ACCOUNTING P105	18 months (full-time)	RMB 140,000	An undergraduate degree (UK 2:1 or equivalent) in accounting. It is essential to have passed at least four ICAEW Certificate Level (CFAB) papers on entry. Equivalent degrees or papers are also acceptable if qualified as Credit for Prior Learning by ICAEW or ACCA. Students who have not completed CFAB will need to do so prior to seeking full membership of the ICAEW. Applicants who do not have an equivalent UK degree in Accounting will also be considered if they have completed the six ICAEW Certificate Level (CFAB) papers or equivalent. Applicants with a professional background rather than a degree need to demonstrate relevant training record and working experience in an accounting and finance environment. Such applications will be assessed on a case-by-case basis and are subject to approval by XJTLU Academic Affairs.
	● MSC PROJECT MANAGEMENT P107	18 months (full-time), 30 months (part-time)	RMB 120,000	An undergraduate degree (UK 2:1 or equivalent) in any discipline.
MATHEMATICAL SCIENCES	● MSC FINANCIAL MATHEMATICS P111	18 months (full-time)	RMB 90,000	An undergraduate degree (UK 2:1 or equivalent) in a relevant field, such as mathematics, statistics, physics, engineering, computer science, finance and economics.

ENGLISH REQUIREMENTS

- IELTS: 6.0 (minimum of 5.0 in all sections) / TOEFL iBT:80
- IELTS: 6.5 (minimum of 5.5 in all sections) / TOEFL iBT:90, minimum of 21 in any skill
- ▲ IELTS: 7.0 (minimum of 6.0 in all sections) / TOEFL iBT:100, minimum of 21 in any skill
- ◆ IELTS: 7.0 (minimum of 7.0 in all sections) / TOEFL iBT:100, minimum of 21 in any skill

MINIMUM ENTRY REQUIREMENTS

UK: 2:1 or equivalent
 China: Overall weighted average 75-85%, depending on the institution.
 North America: GPA 3.0 out of 4 or 3.2 in the final two years of UG study

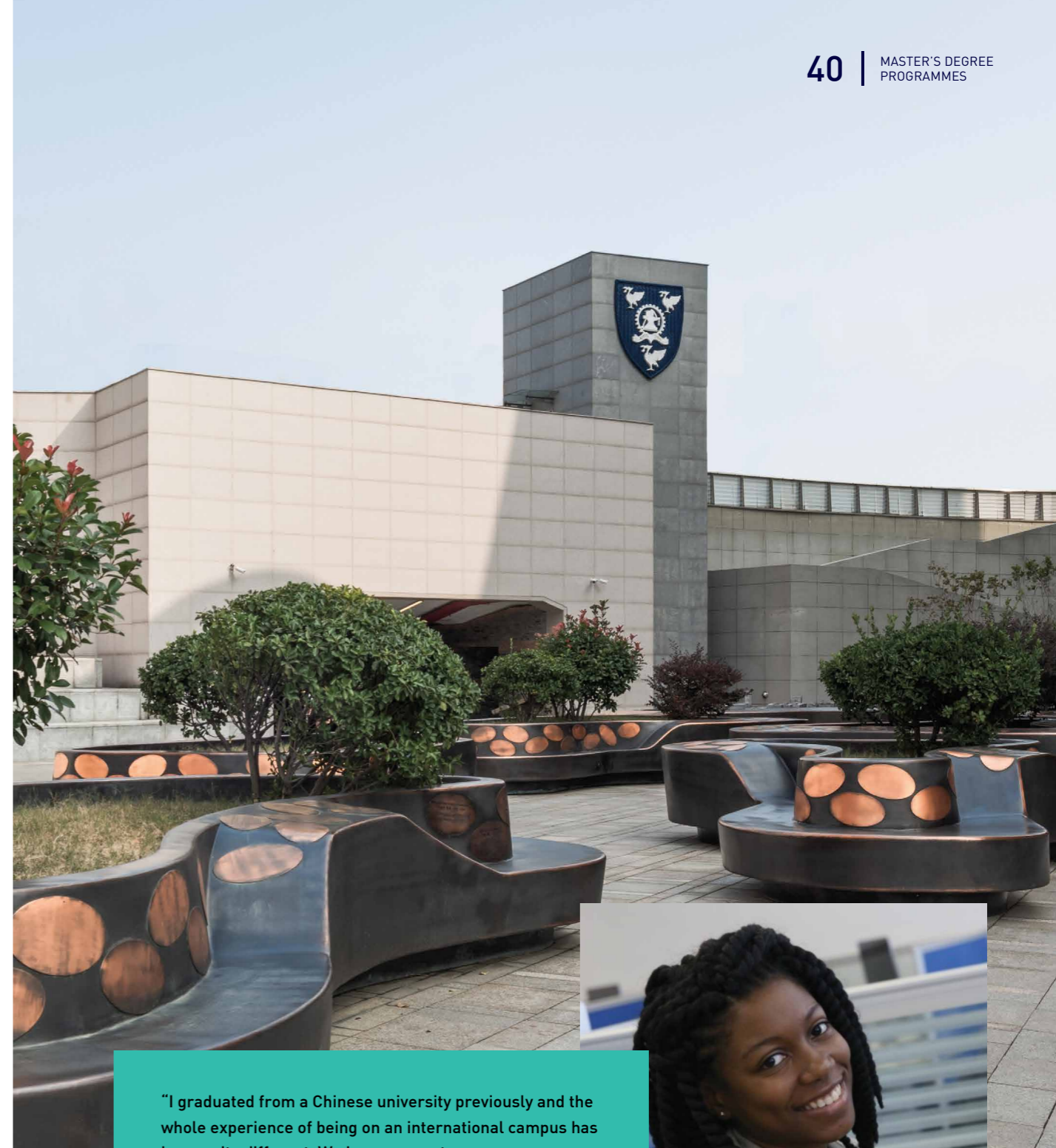
DEPARTMENT	PROGRAMME	DURATION	TUITION FEES	ENTRY REQUIREMENTS
URBAN PLANNING AND DESIGN	● MSC URBAN PLANNING (SPECIALISATION IN URBAN DESIGN) P115	18 months (full-time), 30 months (part-time)	RMB 90,000	An undergraduate degree (UK 2:1 or equivalent) in industrial design, engineering, architecture, urban planning and design, or another design-related discipline.
	● MSC URBAN PLANNING P117	18 months (full-time)	RMB 90,000	An undergraduate degree (UK 2:1 or equivalent) in a relevant field, such as urban planning and design, architecture, geography, economics, management, environmental science, social or public policy.
SCHOOL OF FILM AND TV ARTS	▲ MSC MEDIA AND COMMUNICATION P121	18 months (full-time), 30 months (part-time)	RMB 90,000	An undergraduate degree (UK 2:1 or equivalent) in communication, media, English with media or similar. No practical experience is required, but some relevant media practice/background would be an advantage.

ENGLISH REQUIREMENTS

- IELTS: 6.0 (minimum of 5.0 in all sections) / TOEFL iBT:80
- IELTS: 6.5 (minimum of 5.5 in all sections) / TOEFL iBT:90, minimum of 21 in any skill
- ▲ IELTS: 7.0 (minimum of 6.0 in all sections) / TOEFL iBT:100, minimum of 21 in any skill
- ◆ IELTS: 7.0 (minimum of 7.0 in all sections) / TOEFL iBT:100, minimum of 21 in any skill

MINIMUM ENTRY REQUIREMENTS

UK: 2:1 or equivalent
 China: Overall weighted average 75-85%, depending on the institution.
 North America: GPA 3.0 out of 4 or 3.2 in the final two years of UG study



“I graduated from a Chinese university previously and the whole experience of being on an international campus has been quite different. We have access to so many resources and a wealth of knowledge from our professors who come from all over the world. Being in China there are so many opportunities in different fields. I'd like to work in event planning as I have some experience with that already and I enjoy it.”

KRISTAL SOROKA, THE BAHAMAS
 MSC MEDIA AND COMMUNICATION



DEPARTMENT OF ARCHITECTURE

Modern China presents a wealth of exciting opportunities for architecture students. Against the backdrop of the country's fast-paced modernisation, the Department of Architecture engages with the challenges and contradictions of architecture in China in an open-minded and forward-thinking manner. Our students benefit from the experiences of our highly international academic staff, and seek answers to the questions facing both local and international architecture today.

As academics and architects we involve ourselves in real debates, challenge common perceptions and evaluate traditions. Our unique location in Suzhou allows in-depth explorations of the dynamics of urban life and designed spaces. Confronted with the city's past and engaged in its present, our students are guided to design the future.



Master of ARCHITECTURAL DESIGN

The Master of Architectural Design educates the next generation of forward-looking global architects who have the necessary cross-cultural awareness, social and environmental responsibility, creative and critical capability, technical competence and professional attitude to enable ongoing and future transformations in the globalised building environment.

Combining an international perspective with insight into China's rapid urbanisation, the programme includes both architectural design studios and humanistic and technical modules. A student-centred learning environment offers opportunities for design-driven research and individual experimental enquiry to foster your conceptual design skills as well as research skills in preparation for both professional practice and PhD-level studies.

Students graduating from the programme qualify for Royal Institute of British Architects (RIBA) Part 2 validation, which is the second out of three stages in the formal educational process required to register as a professional architect in the United Kingdom.

RIBA 
Validated course
in architecture

WHAT YOU WILL LEARN

By the time you graduate from the Master of Architectural Design, you will have:

- the ability to generate complex design proposals - showing understanding of current architectural issues and originality
- competence in a comprehensive range of visual, oral and written media to test, analyse, critically appraise and explain design proposals
- the ability to creatively evaluate materials, processes and techniques that apply to complex architectural designs and building construction
- critical understanding of how knowledge is advanced through research
- an understanding of the architecture and the construction industry
- problem solving skills, professional judgement, and the confidence make decisions in complex and unpredictable circumstances.

WHY STUDY ARCHITECTURAL DESIGN AT XJTLU?

- Graduate from the only postgraduate architecture programme in mainland China validated by the Royal Institute of British Architects (RIBA) for the RIBA Part 2;
- Gain hands-on experience through internships and design studios taught by practitioners from local and international firms, focussing on a number of key themes including urban development and regeneration, sustainable living, and digital design and fabrication;
- Engage with the local Chinese context while maintaining an international perspective;
- Learn from international academic staff with opportunities to contribute to current research projects and papers and to work as teaching and research assistants;
- Earn a University of Liverpool degree that is recognised by the Chinese Ministry of Education.

CAREERS AND FURTHER STUDY

Graduates from this programme have an appropriate foundation for employment in the architectural profession at an advanced level. Graduates enjoy excellent employment opportunities in the building and creative industries, in local and international architecture firms, as well as in architecture administration, research and higher education institutions. The programme also provides a solid foundation for pursuing a PhD.

MODULES

YEAR ONE

APPLIED TECHNOLOGY IN ARCHITECTURE
DESIGN STUDIO 1
ARCHITECTURAL THEORY AND CRITICISM
ADVANCED PROFESSIONAL PRACTICE
DESIGN STUDIO 2
TOPICS IN ARCHITECTURAL HISTORY

ADDITIONAL LEARNING ACTIVITIES

The programme includes 200 hours of Additional Learning Activities per semester, most of which are chosen individually by students. They should normally be spread equally over teaching semesters and the summer and winter breaks. An individual student-learning plan will be established at the outset of each semester with the academic advisor.

YEAR TWO

ARCHITECTURAL DESIGN AND RESEARCH METHODS
PRACTICE BASED ENQUIRY AND ARCHITECTURAL REPRESENTATION
DESIGN STUDIO 3
THESIS
DESIGN STUDIO 4

✓ ATTENDANCE
Full time

🕒 DURATION
24 months

👤 ACCREDITATION
RIBA Part 2

🎓 QUALIFICATION
University of Liverpool
Master of Architectural
Design

DEPARTMENT OF BIOLOGICAL SCIENCES

The department of Biological Sciences has academic staff recruited from top universities and institutes around the world, thriving undergraduate and graduate programmes and first-rate research facilities.

Biological science has become one of the most important and exciting scientific disciplines of the 21st century, and its insights into life processes through genomics, diagnostics and therapeutic drug development are having a major impact on society.

Our department, with its dynamic and highly international staff, aims to make fundamental discoveries as well as to address some of the most pressing challenges facing society.



MRes MOLECULAR BIOSCIENCE

The MRes Molecular Bioscience programme provides a thorough understanding of the key approaches for studying biological processes at the molecular level.

The programme combines biotechnology-related topics such as molecular biology, protein biochemistry and drug discovery, with modules on post-genomic biology and bioinformatics.

With a major focus on project management and advanced research skills, the programme offers you the chance to undertake an in-depth research project and specialised dissertation. Your studies will be guided by a customised learning plan, taking into account your background, interests and career aspirations.

The Department of Biological Sciences has internationally respected investigators and excellent teaching and laboratory infrastructure.

WHAT YOU WILL LEARN

By the time you graduate from the MRes Molecular Bioscience programme, you will have:

- key transferable skills relevant to a range of careers and industries, such as data analysis, report writing, team building and networking, and project management
- specialised knowledge in an area of molecular biology that suits your interests and career ambitions
- a range of critical interdisciplinary research skills and a strong understanding of the theoretical background and practical implementation of an intensive research project.

WHY STUDY MOLECULAR BIOSCIENCE AT XJTLU?

- Learn from international academic staff with opportunities to work with them to carry out world-class research in a dynamic, transnational environment;
- Gain a solid foundation to pursue PhD programmes in high-quality international and Chinese universities;
- Benefit from XJTLU's strategic location near many biotechnology companies in BioBay, a national biotechnology hub with more than 400 companies with the opportunity for internships;
- Enjoy prestigious scientific symposia, conferences and summer schools at the nearby Cold Spring Harbor Asia, giving you the chance to interact with world-famous researchers;
- Earn a University of Liverpool degree that is recognised by the Chinese Ministry of Education.

CAREERS AND FURTHER STUDY

Graduates from this programme are well prepared for advanced research careers in both international and Chinese university settings, as well as in the bio-industrial sector in areas such as biotechnology and pharmaceuticals. The programme also provides a solid foundation for pursuing a PhD.

✓ **ATTENDANCE**
Full time

🕒 **DURATION**
18 months

🎓 **QUALIFICATION**
University of Liverpool
MRes Molecular
Bioscience

MODULES

COMPULSORY MODULES

RESEARCH METHODS IN BIOTECHNOLOGY

RESEARCH METHODS IN POST-GENOMIC
BIOLOGY

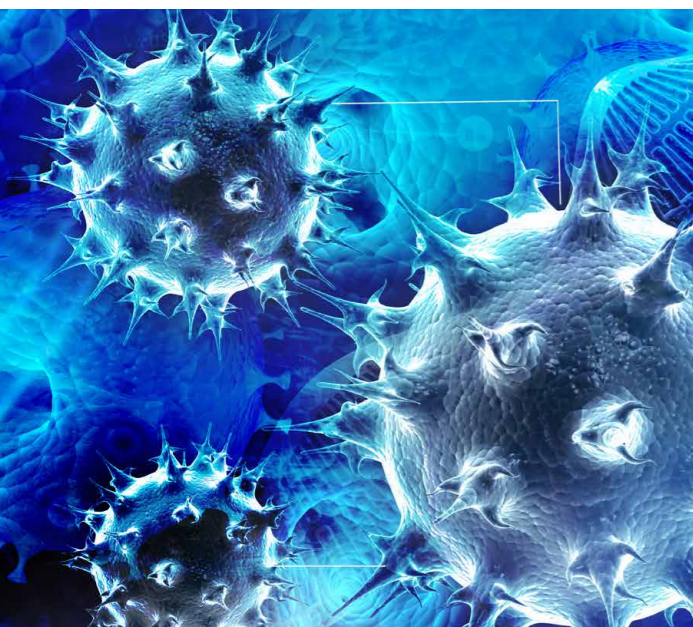
RESEARCH METHODS IN BIOINFORMATICS

FUNDAMENTALS OF PROJECT MANAGEMENT

RESEARCH PROJECT

ADDITIONAL LEARNING ACTIVITIES

The completion of additional learning activities is required to obtain your masters degree. Normally, required ALA hours will be distributed evenly across each semester, amounting to 200 hours per semester.



“The programme was more difficult but much more fun than I could have imagined. I realise this, really, is the joy of conducting scientific research.”

BINGYU LI
MRES MOLECULAR BIOSCIENCE
CHINA



DEPARTMENT OF CHEMISTRY

Students in the Department of Chemistry benefit from a fast-growing programme and first-rate academic staff as well as multiple operational research and teaching laboratories.

Chemistry has been regarded as the central science of the 21st century. Exciting in itself, it is also interconnected with a number of natural sciences and their subdisciplines such as physics, geology, environmental sciences, biology and medicine.

Chemistry plays an important role in pharmacology and drug discovery, nanotechnology, advanced materials, space research and environmental protection. A degree in chemistry will boost your employment opportunities within the chemical and pharmaceutical industries and provide great prospects in many other fields of industry and academia.



MRes ADVANCED CHEMICAL SCIENCES

The MRes Advanced Chemical Sciences programme provides you with the education and training needed to understand different aspects of the field of chemical sciences.

The programme covers a range of topics, from synthetic chemistry to nanotechnology, to analytical methods and instrumentation. Strong emphasis is placed on developing project management and professional skills. After completing taught modules, you will conduct a 12-month extensive research project of your choice that leads to submission of a dissertation.

Your studies will be guided by a customised learning plan, taking into account your background, interests and career aspirations.

WHAT YOU WILL LEARN

By the time you graduate from the MRes Advanced Chemical Sciences, you will have:

- career-enhancing personal and employability skills such as time management, report writing, team-building, networking and project management
- a range of critical interdisciplinary research skills
- a strong understanding of the theoretical background and practical implementation of an intensive research project

WHY STUDY ADVANCED CHEMICAL SCIENCES AT XJTLU?

- Learn from international staff, who are experts in various fields of chemistry with strong links to local and international industries;
- Benefit from XJTLU's strategic location near many biotechnology companies in BioBay, a national biotechnology hub with more than 400 companies with the opportunity for internships;
- Enjoy prestigious scientific symposia, conferences and summer schools at the nearby Cold Spring Harbor Asia, giving you the chance to interact with world-famous researchers;
- Gain an excellent foundation for pursuing PhD programmes both in China or abroad;
- Earn a University of Liverpool degree that is recognised by the Chinese Ministry of Education.

CAREERS AND FURTHER STUDY

Graduates from this programme are well prepared for careers in a variety of industries, including chemical and material science, pharmaceuticals, biotechnology, food and beverages (quality assurance and new formulation), and analytical laboratories.

✓ **ATTENDANCE**
Full time

🕒 **DURATION**
18 months

🎓 **QUALIFICATION**
University of Liverpool
MRes Advanced
Chemical Sciences

MODULES

COMPULSORY MODULES

ADVANCED ANALYTICAL CHEMISTRY

NANOTECHNOLOGY AND ADVANCED MATERIALS

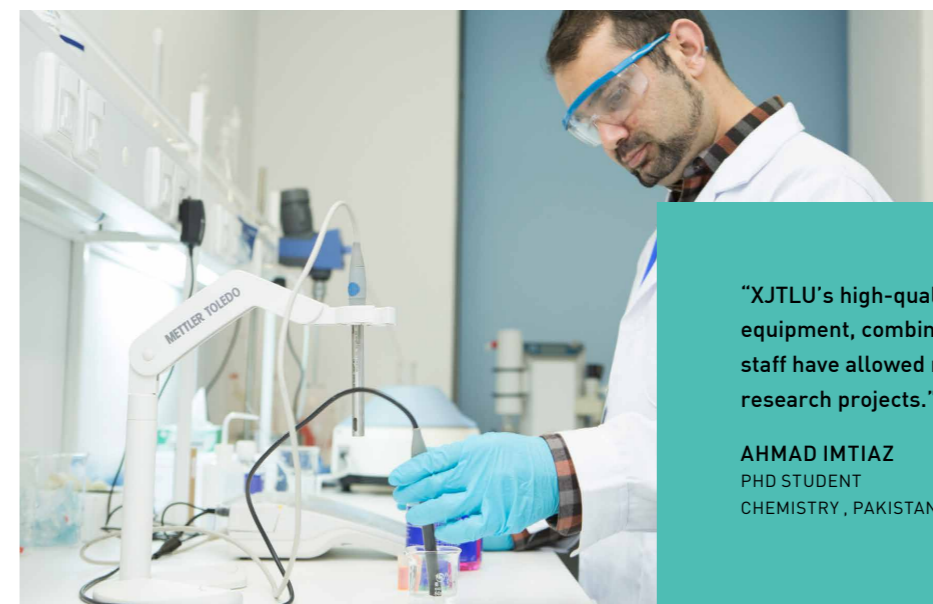
TOPICS IN ADVANCED ORGANIC CHEMISTRY

FUNDAMENTALS OF PROJECT MANAGEMENT

RESEARCH PROJECT

ADDITIONAL LEARNING ACTIVITIES

The completion of additional learning activities is required to obtain your masters degree. Normally, required ALA hours will be distributed evenly across each semester, amounting to 200 hours per semester. Part-time programmes will normally require 100 to 150 hours per semester.



"XJTLU's high-quality laboratories and equipment, combined with the expert academic staff have allowed me to conduct exciting research projects."

AHMAD IMTIAZ
PHD STUDENT
CHEMISTRY, PAKISTAN



DEPARTMENT OF CHINA STUDIES

The Department of China Studies teaches and researches China's history, society, politics and culture. XJTLU's location in Suzhou creates a live learning laboratory in which to examine both China's ancient history and fast-paced contemporary society. Learning is enhanced by site visits to Chinese cities such as Chengdu and Xi'an.

Our students gain an in-depth understanding of the world's most populous nation and largest market. We welcome full-time students into our programme as well as students from other universities who wish to spend a semester or an academic year studying in China. China studies will be of interest to those studying any university degree, but will be of particular interest to students currently studying in the fields of politics, sociology, cultural studies, history and the social sciences. Students also have the opportunity to study the Chinese language during their time at XJTLU.



MA CHINA STUDIES

With the rise of China as a global economic power there is an increasing demand among organisations and companies from around the world for professionals with knowledge of China's political, economic and social systems, who can also speak Chinese.

The MA China Studies provides you with in-depth knowledge of China's history, politics, society and economy, in order to equip you with a comprehensive understanding of China's complex socio-economic system.

This knowledge will give you unique and important insights, as well as the language training in Mandarin critical to operating and decision-making in the Chinese context.



WHAT YOU WILL LEARN

By the time you graduate from the MA China Studies, you will have:

- comprehensive knowledge of China's history, culture, society, politics, and economy, as well as of China's regional, technological and social policy development
- Chinese language skills, depending on individual's starting level and goals
- strong research and analytical skills, having completed a comprehensive research project and dissertation in your final semester.

WHY STUDY CHINA STUDIES AT XJTLU?

- Learn from international experts who will introduce you to varying perspectives on China from different disciplinary backgrounds, including politics, history, economy, literature, sociology and more;
- Experience China firsthand and take advantage of XJTLU's strategic location in Suzhou - one of the most culturally and economically vibrant places in the country;
- Benefit from our faculty's strong links with key universities in China's Jiangnan region (including Shanghai, and Jiangsu and Zhejiang provinces), providing opportunities for you to spend a period of study at another university;
- Earn a University of Liverpool degree that is recognised by the Chinese Ministry of Education.

CAREERS AND FURTHER STUDY

Graduates from this programme pursue careers in a diverse range of companies and organisations looking to deal with or operate in China in fields such as international business, technology, media, health, government, diplomacy, journalism, education, and development. Particularly for international graduates, the China expertise and ability to speak Chinese gained during the programme will enhance career prospects in whichever field they operate in.

MODULES

COMPULSORY MODULES

Semester one:

CHINA'S HISTORY

CHINA'S POLITICS

CHINESE SOCIETY

CHINA'S ECONOMY

Semester two:

CONTEMPORARY CHINESE LITERATURE

CHINA'S WELFARE AND DEVELOPMENT

CHINA'S TECHNOLOGY AND DEVELOPMENT

CHINA'S REGIONAL DEVELOPMENT

Semester three:

CHINA STUDIES DISSERTATION

✓ **ATTENDANCE**
Full time

🕒 **DURATION**
18 months

🎓 **QUALIFICATION**
University of Liverpool
MA China Studies

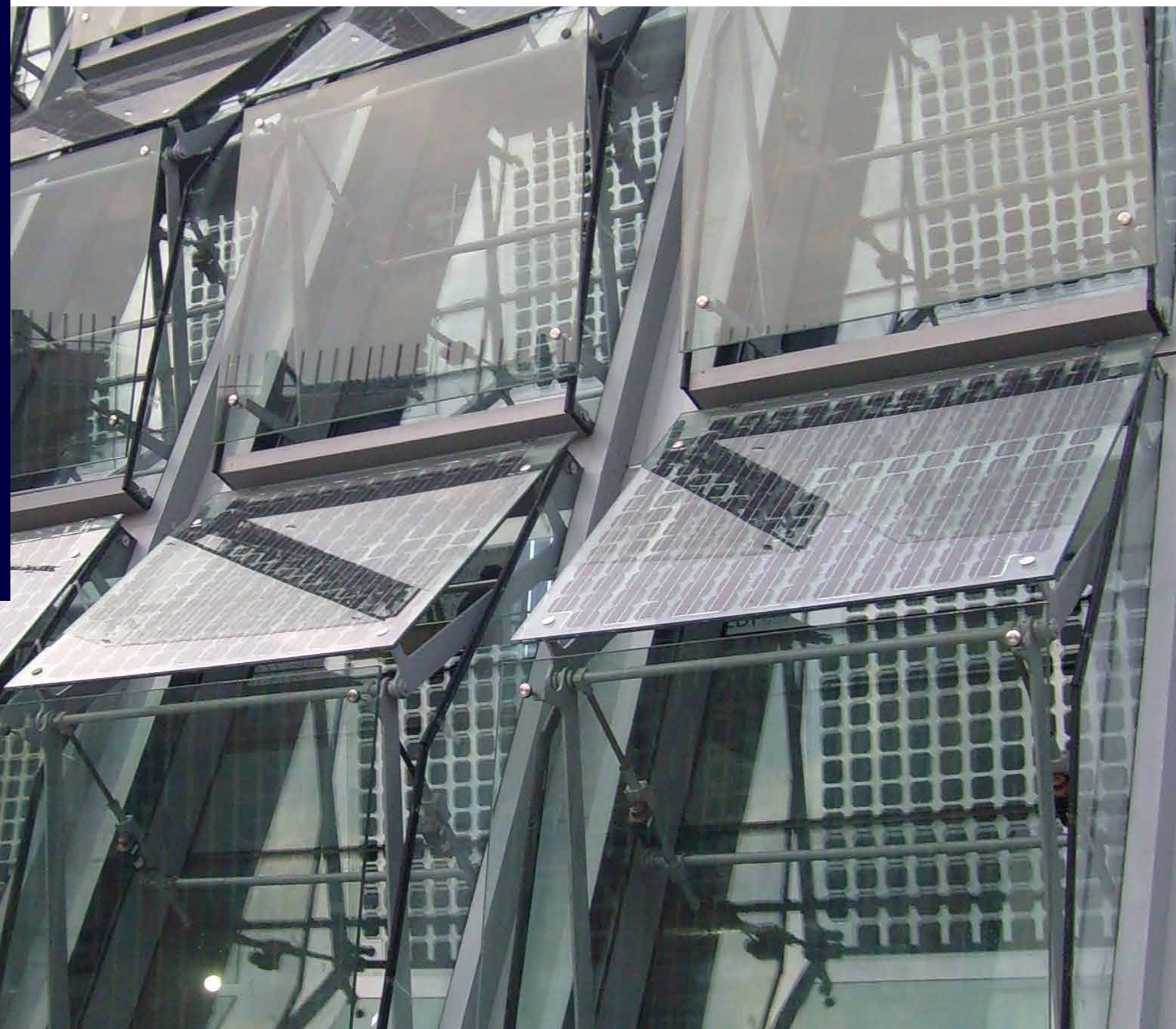
ADDITIONAL LEARNING ACTIVITIES

The completion of additional learning activities is required to complete your masters degree. Normally, required ALA hours will be distributed evenly across each semester, amounting to 200 hours per semester.

DEPARTMENT OF CIVIL ENGINEERING

Our programmes are designed to produce engineers with sound knowledge, problem-solving skills and a comprehensive understanding of the multidisciplinary aspects of building design which combine the precision of civil, structural and building services engineering principles as well as the creativity of architecture.

As China is witnessing rapid economic transformation alongside unprecedented urbanisation, civil engineering students will be able to take full advantage of China's evolution. Our department educates technical professionals with an international outlook who can meet the industrial development requirements of the next century. You will be immersed in both the theory and practice of design and construction. Professors, lecturers and industry professionals from the department provide you with a well-rounded education and in-depth learning of the multidisciplinary interdependence and complexity involved with architectural engineering from the design phase to construction.



MSc CIVIL ENGINEERING

The MSc Civil Engineering programme incorporates all of the contemporary key elements of engineering design in the built environment.

During the programme, you will develop a high level of knowledge and skills in the fields of structural engineering, construction management, geotechnical engineering and innovative construction materials.

The MSc Civil Engineering programme embraces research-led teaching, where the students are actively engaged by accomplishing technical tasks, either in the form of group work or individual projects.

Comprising two semesters of taught modules, this programme also includes undertaking a research dissertation during the third semester.

The programme is accredited by the Joint Board of Moderators (JBM) as meeting the requirements for Further Learning for a Chartered Engineer (CEng), for candidates who have already acquired a partial CEng accredited undergraduate first degree.

WHAT YOU WILL LEARN

By the time you graduate from the MSc Civil Engineering programme, you will have:

- independent critical thinking skills, which are key for the development of professional engineering insight
- a solid understanding of the theoretical aspects of the recent advances in civil engineering fields
- the ability to work in complex professional environments and find innovative solutions for technical problems.

WHY STUDY CIVIL ENGINEERING AT XJTLU?

- Graduate from a programme accredited by one of the world's most powerful professional bodies, the UK Joint Board of Moderators;
- Learn in an international environment with highly engaged staff who are experienced in both academia and industry;
- Earn a University of Liverpool degree that is recognised by the Chinese Ministry of Education;

CAREERS AND FURTHER STUDY

Graduates from this programme are well prepared for roles such as consultant or site manager in the construction industry, as well as similar positions in government, and in water management and infrastructure facilities. Graduates can also find employment as structural engineers, geotechnical engineers, hydraulic and hydrologic engineers, quantity surveyors and quality managers.



MODULES

COMPULSORY MODULES

SUSTAINABLE TECHNOLOGY AND BUILDING MATERIALS

SUSTAINABLE DRAINAGE SYSTEMS

CRITICAL STATE SOIL MECHANICS

ADVANCED CONSTRUCTION MANAGEMENT

SUSTAINABLE ENGINEERING WITH TIMBER

ADVANCED SIMULATION OF SUSTAINABLE STRUCTURAL SYSTEMS

ENVIRONMENTAL ENGINEERING AND MANAGEMENT PRACTICE

ADVANCED STRUCTURAL DESIGN

DISSERTATION

ATTENDANCE

Full time
Part time

DURATION

18 months (f/t)
36 months (p/t)

ACCREDITATION

JBM

QUALIFICATION

University of Liverpool
MSc Civil Engineering

ADDITIONAL LEARNING ACTIVITIES

The completion of additional learning activities is required to complete your masters degree. Normally, required ALA hours will be distributed evenly across each semester, amounting to 200 hours per semester. Part-time programmes will normally require 100 to 150 hours per semester.



MSC SUSTAINABLE CONSTRUCTION

The MSc Sustainable Construction programme gives you technologically advanced knowledge, problem-solving skills and a comprehensive understanding of the key aspects of sustainability in civil engineering construction.

During your studies, you will gain a critical awareness of current and future challenges associated with the intervention of sustainability strategies and their integration in the civil engineering sector, as well as prospective solutions from existing and emerging scientific technologies.

The programme comprises two semesters of taught modules, assessed by coursework and examination, followed by a research dissertation during your third semester.

The programme is accredited by the Joint Board of Moderators (JBM) as meeting the requirements for Further Learning for a Chartered Engineer (CEng), for candidates who have already acquired a partial CEng accredited undergraduate first degree.



WHAT YOU WILL LEARN

By the time you graduate from the MSc Sustainable Construction, you will have:

- independent critical thinking skills, which are key for the development of professional engineering insight
- a solid understanding of the theoretical aspects of the recent advances in engineering, construction and sustainability fields
- knowledge of the latest sustainability technology and strategies and how to apply them in building design
- the ability to work in complex professional environments and find innovative solutions for technical problems.

WHY STUDY SUSTAINABLE CONSTRUCTION AT XJTLU?

- Learn in an innovative and multicultural environment, which integrates professionally accredited education with modern training practices, delivered in state-of-the-art laboratory facilities and educational platforms;
- Gain a multidisciplinary perspective, with modules delivered by the departments of Civil Engineering, Architecture, Urban Planning and Electrical and Electronic Engineering;
- Graduate with a programme focussed on the growth industry of sustainable design and development in the civil engineering sector;
- Study an advanced-level curriculum enhanced by practical applications, specialised research seminars and industrial training;
- Earn a University of Liverpool degree that is recognised by the Chinese Ministry of Education.

CAREERS AND FURTHER STUDY

Graduates from this programme are well prepared for careers in the environmental construction and management sectors, governmental regulatory agencies and environmental consultancies. Graduates go on to find employment in positions such as green infrastructure engineer, water resources engineer, construction site engineer, environmental consultant engineer and sustainable technology developer.

✓ **ATTENDANCE**
Full time
Part time

🕒 **DURATION**
18 months (f/t)
36 months (p/t)

👤 **ACCREDITATION**
JBM

🎓 **QUALIFICATION**
University of Liverpool
MSc Sustainable
Construction

MODULES

COMPULSORY MODULES

SUSTAINABLE TECHNOLOGY AND BUILDING MATERIALS

SUSTAINABLE DRAINAGE SYSTEMS

SUSTAINABLE ENERGY AND ENVIRONMENT

INTEGRATION OF ENERGY STRATEGIES IN THE DESIGN OF BUILDINGS

SUSTAINABLE ENGINEERING WITH TIMBER

ADVANCED SIMULATION OF SUSTAINABLE STRUCTURAL SYSTEMS

ENVIRONMENTAL ENGINEERING AND MANAGEMENT PRACTICE

SUSTAINABLE URBAN PLANNING STRATEGIES
DISSERTATION

ADDITIONAL LEARNING ACTIVITIES

The completion of additional learning activities is required to complete your masters degree. Normally, required ALA hours will be distributed evenly across each semester, amounting to 200 hours per semester. Part-time programmes will normally require 100 to 150 hours per semester.



“I like the teaching style here. You can discuss things openly with professors.”

PUYUE GONG
MSC SUSTAINABLE CONSTRUCTION
CHINA



DEPARTMENT OF COMPUTER SCIENCE AND SOFTWARE ENGINEERING

Computer systems affect every part of our daily lives as they are used by every conceivable type of organisation. These systems are highly interdisciplinary with historical roots in mathematics, physics and electronics. Over the years, computer scientists and software engineers remain at the cutting edge by creating more intelligent and effective solutions to problems.

The Department of Computer Science and Software Engineering equips its students with a broad knowledge of computer-based systems and the technical skills to work in research, development or technical support. Students learn how to use skills creatively to solve practical problems and how cutting-edge computer technology is developed.

Our highly qualified staff have a diverse range of international experience in teaching, research and working with industry, which, together with our active research and business interactions, benefit our students by enhancing their learning experience and employability.



MSC APPLIED INFORMATICS

Computer Systems have become an increasingly important part of our society and our working lives. Virtually all modern organisations rely heavily on computer systems, creating a huge demand for suitably qualified computing professionals.

The MSc Applied Informatics programme will train you for advanced technical or managerial roles in computing areas such as finance informatics, information systems or telecommunications.

During the programme, you will conduct a 12-month extensive research project of your choice that leads to submission of a dissertation.

WHAT YOU WILL LEARN

By the time you graduate from the MSc Applied Informatics, you will have:

- theoretical and practical knowledge of key technological and business areas in the IT industry
- practical skills in research, analysis, realisation and evaluation of IT systems including the write-up of technical and research documents
- the ability to apply your skills in management, design and implementation of IT-based solutions in different application domains.

WHY STUDY APPLIED INFORMATICS AT XJTLU?

- Learn in-depth knowledge about the development of quality computer-assisted solutions to problems, the design and management of efficient and effective problem-solving processes, based on the modern methods and frameworks of informatics;
- Gain skills and knowledge for working across a wide range of industries in a rich interdisciplinary environment;
- Engage in research under the supervision of staff with the possibility of presenting your results at international conferences and publishing in leading journals;
- Take advantage of placement opportunities for career development and practical experience to complement your theoretical studies;
- Earn a University of Liverpool degree that is recognised by the Chinese Ministry of Education.

CAREERS AND FURTHER STUDY

Graduates from this programme are well prepared for roles such as systems analyst, manager, software engineer, application architect, developer and project leaders in the IT industry. The programme also offers a solid foundation for graduates interested in pursuing a PhD programme either in China or abroad.

MODULES

COMPULSORY MODULES

RESEARCH METHODS
DATA MINING AND BIG DATA ANALYTICS
SOFTWARE ARCHITECTURES
FUNDAMENTALS OF PROJECT MANAGEMENT
DISSERTATION PROJECT

ADDITIONAL LEARNING ACTIVITIES

The completion of additional learning activities is required to complete your masters degree. Normally, required ALA hours will be distributed evenly across each semester, amounting to 200 hours per semester. Part-time programmes will normally require 100 to 150 hours per semester.

✓ **ATTENDANCE**
Full time

🕒 **DURATION**
18 months

🎓 **QUALIFICATION**
University of Liverpool
MSc Applied Informatics

OPTIONAL MODULES

OBJECT ORIENTED PROGRAMMING
INTERACTIVE SYSTEMS
MACHINE LEARNING
IMAGE AND VIDEO PROCESSING
MOBILE COMMUNICATIONS
COMPUTATIONAL METHODS IN FINANCE
SOCIAL WEB PROGRAMMING
SOCIAL NETWORK ANALYSIS
PRINCIPLES OF COMPUTER GAMES DESIGN
COMPUTER SYSTEMS SECURITY

MRes COMPUTER SCIENCE

We live in a world where technology, underpinned by computer science, touches almost all aspects of our daily lives. In the rapidly changing field of computer science, new opportunities are constantly being created for innovative professionals who can understand, analyse and harness technology to improve the way we live and work.

The MRes Computer Science programme is designed to develop your research skills while allowing you to specialise in a specific field of study in computer science discipline.

Depending on your interests and career goals, you can choose to specialise in any one of a variety of emerging areas such as Artificial Intelligence, Visual Analytics, Big Data Analysis, Robotics or Virtual Reality.

The programme will prepare you for future employment in a specialised area of the IT industry or for a career in academic research or industrial research and development.

WHAT YOU WILL LEARN

By the time you graduate from the MRes Computer Science programme, you will have:

- an advanced understanding of the theoretical fundamentals of current trends in computer science
- knowledge of state-of-the-art key research issues in specialised areas of computer science
- skills in project management and the design, implementation and evaluation of IT solutions.

WHY STUDY COMPUTER SCIENCE AT XJTLU?

- Benefit from the Research Institute of Big Data Analytics at XJTLU, developed in collaboration with IBM and the Suzhou International Science-Park Data Centre;
- Earn a University of Liverpool degree that is recognised by the Chinese Ministry of Education.

CAREERS AND FURTHER STUDY

Graduates from this programme will be well-prepared for employment in positions such as research and development engineer, systems developer and project leader in IT companies. The programme also offers a solid foundation to pursue a PhD and a career in research.

✓ **ATTENDANCE**
Full time

🕒 **DURATION**
18 months

🎓 **QUALIFICATION**
University of Liverpool
MRes Computer Science

MODULES

COMPULSORY MODULES

RESEARCH METHODS
FUNDAMENTALS OF PROJECT MANAGEMENT
DISSERTATION PROJECT FOR MRES COMPUTER SCIENCE

OPTIONAL MODULES

OBJECT-ORIENTED PROGRAMMING
INTERACTIVE SYSTEMS
CLOUD COMPUTING
DATA MINING AND BIG DATA ANALYTICS
MACHINE LEARNING

ADDITIONAL LEARNING ACTIVITIES

The completion of additional learning activities is required to complete your masters degree. Normally, required ALA hours will be distributed evenly across each semester, amounting to 200 hours per semester. Part-time programmes will normally require 100 to 150 hours per semester.

MSc SOCIAL COMPUTING

The internet revolution has generated a social interactive environment that creates new business opportunities for enterprises. The MSc Social Computing programme addresses this market demand by providing you with training for understanding, managing, developing, implementing and commercialising interactive social media on the internet.

There are growing employment opportunities in this emerging field with many international software development enterprises such as Microsoft and Google, equipped with their own social computing and media development teams. A number of IT enterprises, including Apple and Oracle, own products with social computing functions while many companies successfully turn significant profits through social network sites such as Facebook, Amazon and TaoBao.

You will graduate equipped with the knowledge and skills to forge a successful career in the new interdisciplinary area of social informatics and internet computing.



WHAT YOU WILL LEARN

By the you graduate from the MSc Social Computing, you will have:

- theoretical and practical knowledge of key areas of social business and social computing in both industry and research
- the ability to apply your skills in management, design and implementation of IT-based solutions to social business and computation domains
- practical skills in research, analysis, realisation and evaluation of technical or research documents in social commerce and social computing.

WHY STUDY SOCIAL COMPUTING AT XJTLU?

- Benefit from specialist lab facilities for operating systems, networking, mobile computing and multimedia technology located on campus;
- Take advantage of XJTLU's strategic location close to many international high tech companies with opportunities for networking, internships and site visits;
- Tailor your studies to suit your career ambitions with modules in big data analytics, computer systems security and more available;
- Earn a University of Liverpool degree that is recognised by the Chinese Ministry of Education.

CAREERS AND FURTHER STUDY

Graduates from this programme are well prepared for positions such as research and development engineer, systems developer, and project leader in IT companies. The programme also offers a solid foundation to pursue further study at a doctoral level.

✓ **ATTENDANCE**
Full time

🕒 **DURATION**
18 months

🎓 **QUALIFICATION**
University of Liverpool
MSc Social Computing

MODULES

COMPULSORY MODULES

RESEARCH METHODS
CLOUD COMPUTING
SOCIAL MEDIA MARKETING
SOCIAL WEB PROGRAMMING
SOCIAL NETWORK ANALYSIS
FUNDAMENTALS OF PROJECT MANAGEMENT
MSC DISSERTATION PROJECT

OPTIONAL MODULES

OBJECT-ORIENTED PROGRAMMING
INTERACTIVE SYSTEMS
DATA MINING AND BIG DATA ANALYTICS
COMPUTER SYSTEMS SECURITY
SOCIAL COMMERCE

ADDITIONAL LEARNING ACTIVITIES

The completion of additional learning activities is required to complete your masters degree. Normally, required ALA hours will be distributed evenly across each semester, amounting to 200 hours per semester. Part-time programmes will normally require 100 to 150 hours per semester.

MSC FINANCIAL COMPUTING

With the rapid advancement of computing technology, there is an increasing demand in the dynamic and challenging environment of financial services, for a variety of tech-savvy talent to deliver business solutions on a global scale.

The MSc Financial Computing programme addresses market demand and will train you for advanced technical or managerial roles in new and emerging interdisciplinary areas that combine computer science and finance. You will graduate with the computational techniques and financial knowledge to deliver effective and innovative business solutions.

The Department of Computer Science and Software Engineering is equipped with specialist lab facilities for operating systems, networking, mobile computing and multimedia technology that will support your learning and research.

WHAT YOU WILL LEARN

By the time you graduate from the MSc Financial Computing programme, you will have:

- theoretical and practical knowledge of key areas of finance and computing in both industry and research
- a solid understanding of the latest technology and applications for the finance industry, such as big data and business analytics
- practical skills in research, analysis, realisation and evaluation of technical or research documents in financial computing.

WHY STUDY FINANCIAL COMPUTING AT XJTLU?

- Take advantage of the Financial Lab and Trading Floor located on campus, which gives you access to a world of data for study and research purposes;
- Benefit from the Research Institute of Big Data Analytics at XJTLU, developed in collaboration with IBM and the Suzhou International Science-Park Data Centre;
- Earn a University of Liverpool degree that is recognised by the Chinese Ministry of Education.

CAREERS AND FURTHER STUDY

Graduates from this programme are well prepared roles such as software engineer, database specialist, infrastructure manager, financial analyst, financial consultant, business analyst, system analyst, investment analyst, e-finance architect, credit manager, portfolio manager, business intelligence executive, wealth services officer, and risk management auditor.

✓ **ATTENDANCE**
Full time

🕒 **DURATION**
18 months

🎓 **QUALIFICATION**
University of Liverpool
MSc Financial Computing

MODULES

COMPULSORY MODULES

Computing Graduates:

RESEARCH METHODS
DATA MINING AND BIG DATA ANALYTICS
ACCOUNTING AND FINANCIAL MANAGEMENT
SOFTWARE ARCHITECTURES
MSC DISSERTATION PROJECT

Finance Graduates:

RESEARCH METHODS
DATABASES AND DATA MANAGEMENT
OBJECT-ORIENTED PROGRAMMING
ADVANCED DERIVATIVES
DATA MINING AND MACHINE LEARNING
MSC DISSERTATION PROJECT

Other Graduates:

RESEARCH METHODS
DATABASES AND DATA MANAGEMENT
OBJECT-ORIENTED PROGRAMMING
ACCOUNTING AND FINANCIAL MANAGEMENT
DATA MINING AND MACHINE LEARNING
MSC DISSERTATION PROJECT

ADDITIONAL LEARNING ACTIVITIES

The completion of additional learning activities is required to complete your masters degree. Normally, required ALA hours will be distributed evenly across each semester, amounting to 200 hours per semester. Part-time programmes will normally require 100 to 150 hours per semester.

OPTIONAL MODULES

Computing Graduates:

INTERACTIVE SYSTEMS
CLOUD COMPUTING
MACHINE LEARNING
COMPUTER SYSTEMS SECURITY
SOCIAL WEB PROGRAMMING
ALTERNATIVE INVESTMENTS AND STRATEGIES
ADVANCED CORPORATE FINANCE
INTERNATIONAL FINANCE AND ECONOMICS
ADVANCED INVESTMENTS

Finance Graduates:

DATA MINING AND MACHINE LEARNING
SOFTWARE ARCHITECTURES
COMPUTER SYSTEMS SECURITY
INTERNATIONAL FINANCE AND ECONOMICS
ALTERNATIVE INVESTMENTS AND STRATEGIES
ADVANCED CORPORATE FINANCE
ADVANCED INVESTMENTS

Other Graduates:

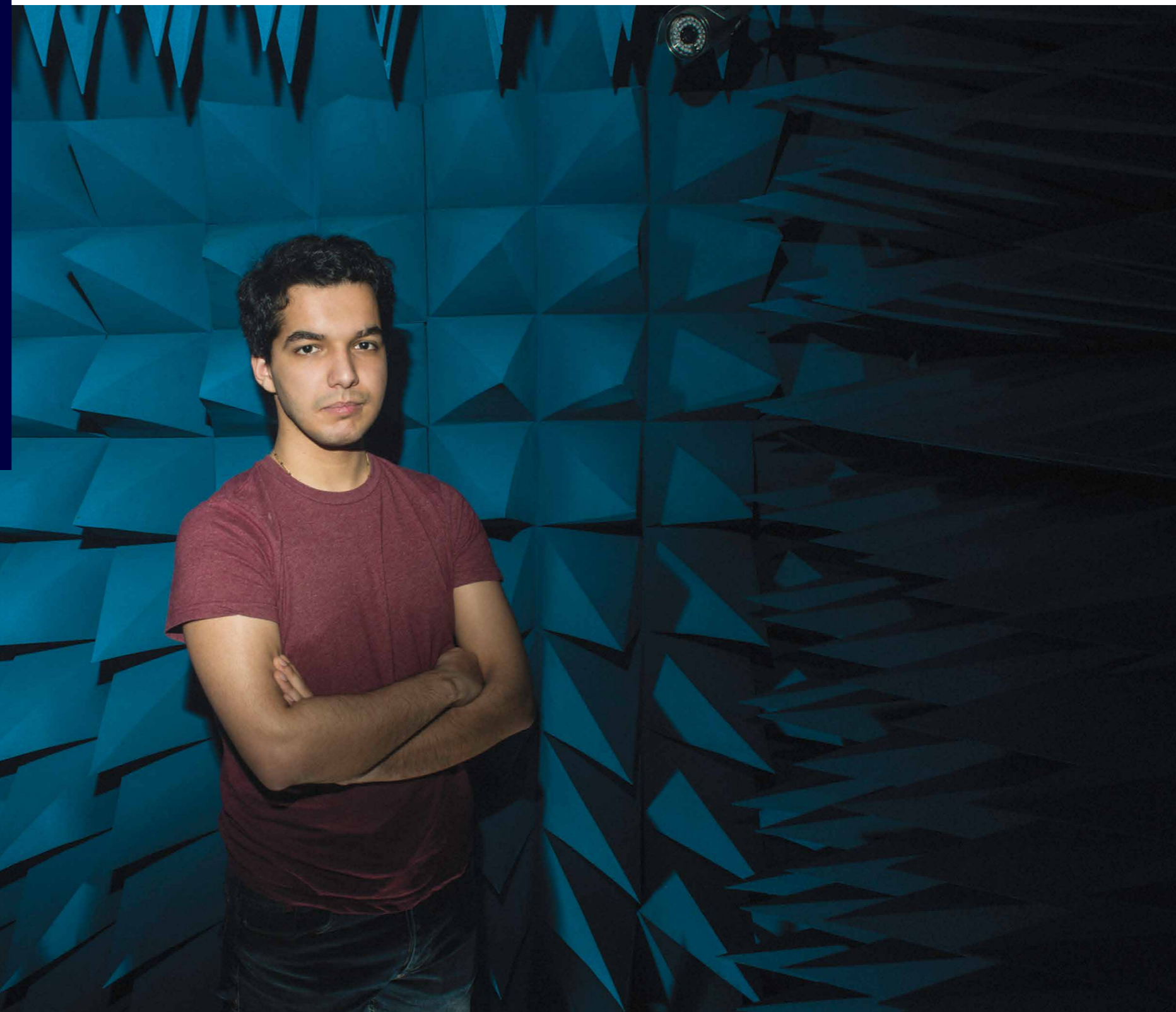
DATA MINING AND MACHINE LEARNING
SOFTWARE ARCHITECTURES
COMPUTER SYSTEMS SECURITY
INTERNATIONAL FINANCE AND ECONOMICS
ALTERNATIVE INVESTMENTS AND STRATEGIES
ADVANCED CORPORATE FINANCE
ADVANCED INVESTMENTS



DEPARTMENT OF ELECTRICAL AND ELECTRONIC ENGINEERING

The Department of Electrical and Electronic Engineering prepares students to excel in one of today's fastest-changing fields. Our commitment to cutting-edge research and continual programme development helps ensure that students graduate at the forefront of their chosen field and are well-prepared to lead the development of the profession and the field.

Our programmes are designed to give you solid training in both software and hardware. Emphasis is placed on the principles of electrical and electronic engineering as well as more specialised subject areas.



MRes LOW CARBON ELECTRICAL POWER AND ENERGY TECHNOLOGY

The MRes Low Carbon Electrical Power and Energy Technology programme provides you with advanced and systematic education and training in the areas of electronic science and technology.

Designed in response to the rapid development of electric power and energy technology in China and worldwide, the programme contains modules covering solar converters, wind power systems, energy storage technology and smart grids.

There is a strong emphasis on hands-on experience and practical skills development. A 12-month extensive research project is required which leads to submission of a dissertation after students have finished the taught modules.

Note: This programme is awaiting official recognition from the Ministry of Education of the People's Republic of China.

WHAT YOU WILL LEARN

By the time you graduate from the MRes Low Carbon Electrical Power and Energy Technology programme, you will have:

- an understanding of state-of-the-art electrical power and energy technology
- the ability to research and critically evaluate trends in current technologies of energy management, sustainability, renewable energy and nuclear energy
- skills in planning, project management and communicating complex ideas
- experience in conducting extended research and developing project work.

WHY STUDY LOW CARBON ELECTRICAL POWER AND ENERGY TECHNOLOGY AT XJTLU?

- Learn in world-class facilities with advanced experimental equipment, including a network analyser, power analyser and electrical machine testing system;
- Engage in cutting-edge research areas such as intelligent and efficient utilisation of emerging electrical power and energy technologies;
- Benefit with the University's close links with international universities, research centres and industry;
- Earn a University of Liverpool degree that is recognised by the Chinese Ministry of Education.

CAREERS AND FURTHER STUDY

Graduates from this programme are well prepared for roles in research and development, particularly in the area of electrical power and energy. Graduates may find employment in positions such as electric power system engineer, electric power system consultant, electrical technology consultant, electric power project manager, and sustainable cities and building design consultant.

MODULES

COMPULSORY MODULES

SUSTAINABLE ENERGY AND ENVIRONMENT
NUCLEAR ENERGY TECHNOLOGY
POWER SYSTEM NETWORK AND SMART GRID
RESEARCH METHODS
MRES PROJECT (DISSERTATION)

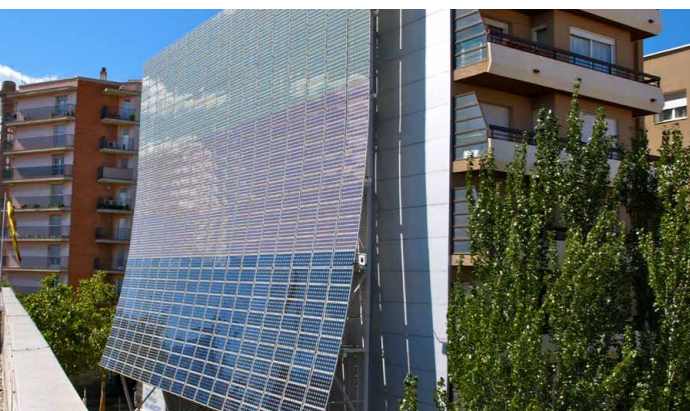
ADDITIONAL LEARNING ACTIVITIES

The completion of additional learning activities is required to complete your masters degree. Normally, required ALA hours will be distributed evenly across each semester, amounting to 200 hours per semester.

✓ ATTENDANCE
Full time

🕒 DURATION
18 months

🎓 QUALIFICATION
University of Liverpool
MRes Low Carbon
Electrical Power and
Energy Technology



MSc MULTIMEDIA TELECOMMUNICATIONS

Artificial intelligence (AI) is playing an increasingly important role in our lives with many traditional jobs expected to be replaced by machines operating with AI technology.

This programme equips you to become a leader in this dynamic, technology-driven era by giving you specialised knowledge of AI technologies including deep learning, computer vision, and image and video processing.

With focus on multimedia and wireless communications, you will learn about the technical characteristics of a wide range of technologies and systems, including 4G and 5G for mobile networking.

It is technologically challenging to deliver multimedia applications and services efficiently over emerging and diverse wireless networks. This programme is designed to help you meet this challenge as an engineer with a deep understanding of wireless and multimedia technologies.



WHAT YOU WILL LEARN

By the time you graduate from the MSc Multimedia Communications, you will have:

- an advanced understanding of cutting-edge technologies, giving you a competitive edge in the job market
- the ability to work in complex professional environments and find innovative solutions for technical problems.

WHY STUDY MULTIMEDIA TELECOMMUNICATIONS AT XJTLU?

- Learn how emerging networking systems enable new applications including triple services for mobile networks, digital television, video streaming, interactive gaming, navigation services, and emergency and healthcare applications;
- Study on a world-class campus with excellent research facilities and advanced experimental equipment;
- Gain practical experience through opportunities to participate in national or industry-funded projects;
- Earn a University of Liverpool degree that is recognised by the Chinese Ministry of Education.

CAREERS AND FURTHER STUDY

Graduates from this programme are well prepared to pursue careers in the fields of image and video communications, artificial intelligence and computer vision. Graduates go on to find employment in roles such as multimedia systems engineer, artificial intelligence developer, multimedia system and information technology consultant, mobile projects manager, wireless and mobile communication consultant, and in a range of leadership positions in the multimedia and communications industry.

MODULES

COMPULSORY MODULES

ADVANCED SIGNAL PROCESSING

IMAGE AND VIDEO PROCESSING

DATA COMMUNICATION AND COMMUNICATION NETWORKS

MOBILE COMMUNICATIONS

MULTIMEDIA COMMUNICATIONS

CODING AND CRYPTOGRAPHY

FUNDAMENTALS OF PROJECT MANAGEMENT

DEEP LEARNING IN COMPUTER VISION

MSC PROJECT

✓ **ATTENDANCE**
Full time

🕒 **DURATION**
18 months

👤 **ACCREDITATION**
IET

🎓 **QUALIFICATION**
University of Liverpool
MSc Multimedia
Telecommunications

ADDITIONAL LEARNING ACTIVITIES

The completion of additional learning activities is required to obtain your masters degree. Normally, required ALA hours will be distributed evenly across each semester, amounting to 200 hours per semester. Part-time programmes will normally require 100 to 150 hours per semester.

MSC SUSTAINABLE ENERGY TECHNOLOGY

Designed in response to a growing skills shortage of engineers with a high level of training in renewable energy, smart grids and sustainability, the MSc Sustainable Energy Technology programme provides you with an advanced education in the fields of sustainable energy generation, distribution and consumption.

You will gain a thorough understanding of sustainability standards, various renewable energies, smart grid and power electronics for renewable energy and energy use management in buildings, urban design and other areas.

You will graduate ready to forge a successful career in sustainable energy technology, where recent developments have led to many job opportunities opening up in industry, government institutions and research centres.



WHAT YOU WILL LEARN

By the time you graduate from the MSc Sustainable Energy Technology, you will have:

- hands-on experience working with advanced experimental equipment including a network analyser, power analyser, Dspace controller, wind turbine and PV testing system
- knowledge of the latest sustainability energy technology and strategies and how to apply them in a practical context
- the ability to work in complex professional environments and find innovative solutions for technical problems.

WHY STUDY SUSTAINABLE ENERGY TECHNOLOGY AT XJTLU?

- Study in world-class facilities including a power electronics laboratory equipped with advanced experimental equipment, a sustainable energy laboratory equipped with a 600W wind turbine, two 270W solar modules, batteries, an inverter with sinusoidal output and main controller and an electric machine and power system laboratory;

Engage in cutting-edge research areas such as the intelligent and efficient utilisation of solar, wind energy and other renewable energy sources;

- Benefit with the University's close links with international universities, research centres and industry;
- Earn a University of Liverpool degree that is recognised by the Chinese Ministry of Education.

CAREERS AND FURTHER STUDY

Graduates from this programme are well prepared for positions such as electric power system engineer, electric power projects manager, and sustainable cities and building design consultant. Graduates may go on to work with industry and government to implement sustainable energy technologies within existing or new systems, and model and evaluate of their impact on ecosystems, economics and society.

MODULES

COMPULSORY MODULES

SUSTAINABLE ENERGY AND ENVIRONMENT
 NUCLEAR ENERGY TECHNOLOGY
 POWER SYSTEM NETWORK AND SMART GRID
 INTEGRATION OF ENERGY STRATEGIES IN THE DESIGN OF BUILDINGS
 PHOTOVOLTAIC ENERGY TECHNOLOGY
 RENEWABLE KINETIC ENERGY TECHNOLOGIES
 POWER ELECTRONICS AND APPLICATIONS FOR RENEWABLE ENERGY
 SUSTAINABLE URBAN PLANNING STRATEGIES
 MSC PROJECT

ADDITIONAL LEARNING ACTIVITIES

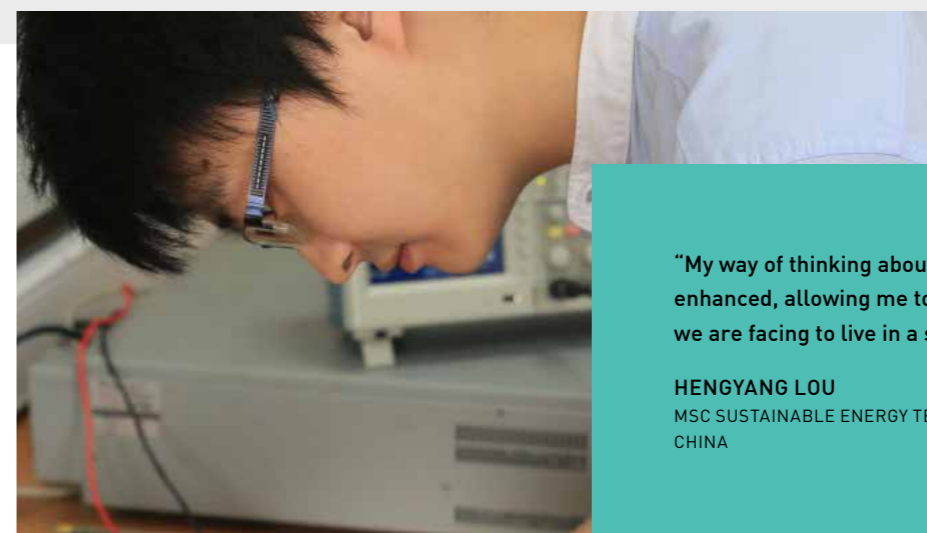
The completion of additional learning activities is required to complete your masters degree. Normally, required ALA hours will be distributed evenly across each semester, amounting to 200 hours per semester. Part-time programmes will normally require 100 to 150 hours per semester.

✓ ATTENDANCE
Full time

🕒 DURATION
18 months

👤 ACCREDITATION
IET

🎓 QUALIFICATION
University of Liverpool
MSc Sustainable Energy
Technology



“My way of thinking about renewable energy has been enhanced, allowing me to understand major challenges we are facing to live in a sustainable environment.”

HENGYANG LOU
MSC SUSTAINABLE ENERGY TECHNOLOGY
CHINA



DEPARTMENT OF ENGLISH

The Department of English trains English-language professionals for careers in the fields of education, finance and business. Our graduates are highly sought after in domestic and international job markets and are well-prepared for employment in corporate communications, internet ventures, and, of course, education. Graduates are also well-positioned to excel in postgraduate studies in a variety of fields. Our learning environment enables students to adapt to western educational culture and to become lifelong learners. The innovative interdisciplinary design of each of our programmes prepares students for the range of opportunities and challenges they will meet in their future careers.



MA TESOL

The MA TESOL programme will provide you with the opportunity to develop both a scholarly and practical understanding of the field of Teaching English to Speakers of Other Languages (TESOL).

The programme is suitable for language teachers, teacher trainers, educational materials writers and test designers who wish to further develop their range of professional skills and knowledge.

You will study in a dynamic, international environment with students from around the world and learn from highly experienced academic staff.

WHAT YOU WILL LEARN

By the time you graduate from the MA TESOL, you will have:

- an advanced understanding of key issues, theories and practices in the field of English language teaching and the connections between theory and practice
- a sound knowledge of language in context and the ability to explore the implications of language analysis for teaching purposes
- an understanding of current methodology as it is embodied in classroom practice
- the ability to engage with theories underlying current views on language learning, including the importance of individual differences amongst learners in their abilities and learning preferences
- skills to conduct academic research.

WHY STUDY TESOL AT XJTLU?

- Study in an international environment with academic staff and students from around the world;
- Benefit from XJTLU's location of Suzhou, one of the most economically and culturally vibrant places in China;
- Earn a University of Liverpool degree that is recognised by the Chinese Ministry of Education.

CAREERS AND FURTHER STUDY

Graduates from this programme are well prepared to start or advance their career in the field of English language teaching. In China, a postgraduate qualification in TESOL is increasingly sought-after by educational institutions. Graduates may also gain employment in publishing or materials development, and management positions. The programme offers a solid foundation for further study for those interested in pursuing a MPhil, MRes, EdD or PhD.

ATTENDANCE

Full time
Part time

DURATION

18 months (f/t)
30 months (p/t)

QUALIFICATION

University of Liverpool
MA TESOL

MODULES

COMPULSORY MODULES

LINGUISTICS FOR LANGUAGE TEACHERS

METHODS IN ENGLISH LANGUAGE TEACHING

PRINCIPLES OF COURSE AND MATERIALS DESIGN

SECOND LANGUAGE ACQUISITION

LANGUAGE TESTING AND ASSESSMENT

SPEAKING AND LISTENING

RESEARCH METHODS

DISSERTATION

OPTIONAL MODULES

DISCOURSE ANALYSIS

LEXIS AND VOCABULARY TEACHING

ENGLISH FOR SPECIFIC PURPOSES

ADDITIONAL LEARNING ACTIVITIES

The completion of additional learning activities is required to complete your masters degree. Normally, required ALA hours will be distributed evenly across each semester, amounting to 200 hours per semester. Part-time programmes will normally require 100 to 150 hours per semester.



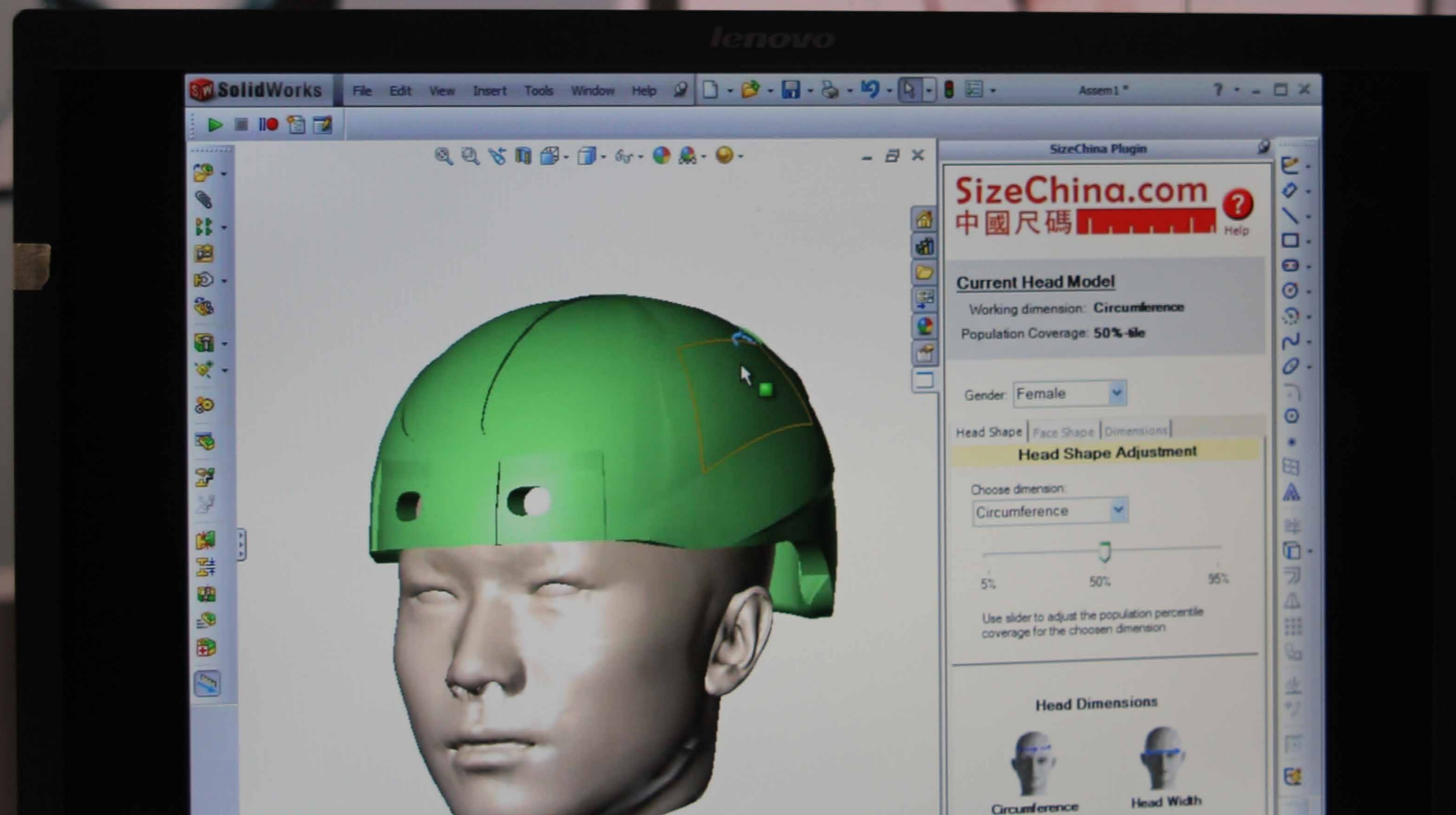
"I find that when I prepare for classes, I can always draw on what I have learned from the programme and apply those things."

YUNYI ZHOU
MA TESOL
CHINA



DEPARTMENT OF INDUSTRIAL DESIGN

The Department of Industrial Design focusses on user-centred product and systems design for society in response to social, cultural and technical context. We endeavour to educate a new generation of industrial and product designers who are able to understand and participate in China's ongoing social, cultural, and economic transformation through achieving a balance of creative and technical knowledge and competencies.



MDes INDUSTRIAL DESIGN

Growth in China will redefine patterns of consumption, production, and cultural appropriation domestically and globally for generations to come. As China-based companies shift to a designed-in-China strategy and international companies seek to design for the Chinese market, career opportunities for graduates of this programme will be numerous.

The MDes Industrial Design programme is for graduates or professionals with design or engineering backgrounds, who want to deepen their design and design research thinking. You will develop an appreciation for – and practice transdisciplinary approaches towards – design solutions, including products, interactions, systems and services.

During the programme, you will gain specialist skills while maintaining a generalist, transdisciplinary outlook towards design and have the opportunity to carry out your own design research project.

WHAT YOU WILL LEARN

By the time you graduate from the MDes Industrial Design, you will have:

- a transdisciplinary understanding of design with the ability to develop and evaluate new investigative methods and approaches
- undertaken a final project with either an academic emphasis to prepare for doctoral study or a more applied, industry focus
- strong critical, creative thinking and communication skills.

WHY STUDY INDUSTRIAL DESIGN AT XJTLU?

- Benefit from the Department of Industrial Design's strong links with international institutions and companies, giving you opportunities for internships, networking events and industry site visits;
- Enjoy a diverse programme with a wide range of design specialties and representations, depending on your interests and career ambitions;
- Take advantage of opportunities to visit University of Liverpool's Liverpool and London campuses;
- Earn a University of Liverpool degree that is recognised by the Chinese Ministry of Education.

CAREERS AND FURTHER STUDY

Graduates from this programme are well prepared for careers as design practitioners and design managers. The programme also offers a solid foundation for graduates wishing to pursue further study in a design-related PhD.

✓ **ATTENDANCE**
Full time
Part time

🕒 **DURATION**
18 months (f/t)
30 months (p/t)

🎓 **QUALIFICATION**
University of Liverpool
MDes Industrial Design

MODULES

COMPULSORY MODULES

FRAMING DESIGN RESEARCH

INNOVATION BY DESIGN

METHODS FOR TRANSDISCIPLINARY DESIGN

ADVANCED DESIGN VISUALISATION AND COMMUNICATION

DESIGN RESEARCH PROJECT

ADDITIONAL LEARNING ACTIVITIES

The completion of additional learning activities is required to complete your masters degree. Normally, required ALA hours will be distributed evenly across each semester, amounting to 200 hours per semester. Part-time programmes will normally require 100 to 150 hours per semester.



“The program provided me a chance to discover my potential about and beyond design. Studying in the intercultural and inspirational environment made me more open-minded.”

ZIYUE DING
MDES INDUSTRIAL DESIGN
CHINA



INTERNATIONAL BUSINESS SCHOOL SUZHOU

IBSS is built on the strengths inherited from XJTLU's parent universities, the University of Liverpool in the UK and Xi'an Jiaotong University in China, to provide our students with a world class international business education.

Our School is based on the principles of internationalism, innovation, inspiration and integrity, which together ensure that we have a positive impact on society through our teaching, research and business engagement.

With leading international staff and a superb location in the heart of Suzhou Industrial Park close to other major commercial centres such as Shanghai and Wuxi, we enjoy ideal conditions for beneficial mutual exchange between business and academia. This underpins a learning and teaching environment that ensures our students graduate with the knowledge and skills needed to succeed in an ever-changing world.



MSc BUSINESS ANALYTICS

The rapid growth of available data is transforming the way managers, accountants, investors and marketers are working. The ability to integrate big data into business plans and decisions is becoming essential for organisations to maintain their competitive advantage.

The MSc Business Analytics programme is a response to these changes in the economic and technological environment. You will graduate as a multi-talented professional, standing in-between your chosen core field of expertise (such as management, finance, and marketing) and information technologies.

In addition to advanced business modules, the programme provides an in-depth understanding of cutting-edge data-processing and data management methods.

The programme is delivered in the International Business School Suzhou (IBSS), one of an elite group of institutions worldwide to be accredited by the Association to Advance Collegiate Schools of Business (AACSB) and European Quality Improvement System (EQUIS). Less than 100 business schools worldwide have both AACSB and EQUIS accreditation.



WHAT YOU WILL LEARN

By the time you graduate from the MSc Business Analytics, you will have:

- a rich understanding of the opportunities and threats posed to organisations by the current increase in data availability
- an ability to analyse, model and investigate large networks of peoples and companies
- knowledge of current practices, theories and issues in a traditional field of business studies
- skills in data processing (descriptive statistics, econometrics and machine learning), problem-solving, and decision-making (using statistical and data analyses to resolve organisational problems)
- proficiency in the use of a wide variety of statistical packages suitable for analysing large data sets.

WHY STUDY BUSINESS ANALYTICS AT XJTLU?

- Study the latest data analysis techniques, making use of artificial intelligence technology such as machine learning and data mining;
- Take advantage of industry links with local companies and opportunities for work experience at big data companies in Suzhou or Shanghai;
- Learn in a practice-oriented environment, which gives you the chance to complete your training with a six-month internship within a company;
- Benefit from the Big Data Analytics and Technology Centre at XJTLU, developed in collaboration with IBM and the Suzhou International Science-Park Data Centre;
- Earn a University of Liverpool degree that is recognised by the Chinese Ministry of Education.

CAREERS AND FURTHER STUDY

Graduates from this programme are well prepared for roles such as data or information analyst, technical consultant, IT-related project manager and customer relationship management (CRM) analyst. Employment opportunities exist in every sector of the economy, particularly within the fast-growing service industries of finance, retail, marketing, and information technology.

MODULES

COMPULSORY MODULES

INTRODUCTION TO BUSINESS ANALYTICS
 CONTEMPORARY ISSUES IN THE ETHICS OF BUSINESS ANALYTICS
 ECONOMETRICS
 DATABASES AND DATA MANAGEMENT
 DATA MINING AND MACHINE LEARNING
 SOCIAL NETWORK ANALYSIS
 BIG DATA – APPLICATIONS IN BUSINESS
 BUSINESS ANALYTICS DISSERTATION

✓ ATTENDANCE
Full time

🕒 DURATION
18 months

👤 ACCREDITATION
AACSB, EQUIS

🎓 QUALIFICATION
University of Liverpool
MSc Business Analytics

OPTIONAL MODULES

FINANCIAL ANALYSIS
 SOCIAL MEDIA MARKETING
 STRATEGIC BUSINESS ANALYSIS
 MARKETING MANAGEMENT
 PORTFOLIO MANAGEMENT
 INTERNATIONAL MARKETING
 STRATEGIC OPERATIONS MANAGEMENT
 MODELLING AND SIMULATION OF OPERATIONS

ADDITIONAL LEARNING ACTIVITIES

The completion of additional learning activities is required to obtain your Masters degree. Normally, required ALA hours will be distributed evenly across each semester, amounting to 200 hours per semester. Part-time programmes will normally require 100 to 150 hours per semester.

MSc ECONOMICS AND FINANCE

The MSc Economics and Finance programme combines a solid foundation in economic theory and applied econometrics with the study of finance.

The study of financial microeconomics and macroeconomics will help you understand complex issues related to financial decision-making while econometrics will provide the necessary tools to perform rigorous research in applied economics and finance. In addition, finance modules will cover a wide range of subjects including portfolio theory, corporate finance, investment and strategy, and derivative instruments.

Our graduates are experts in using modern research tools to analyse the economic, financial, social, and political environment.

The programme is delivered in the International Business School Suzhou (IBSS), one of an elite group of institutions worldwide to be accredited by the Association to Advance Collegiate Schools of Business (AACSB) and European Quality Improvement System (EQUIS). Less than 100 business schools worldwide have both AACSB and EQUIS accreditation.



WHAT YOU WILL LEARN

By the time you graduate from the MSc Economics and Finance programme, you will have:

- a solid understanding of core and advanced principles, theories and models relevant to finance and financial management
- the ability to explain, understand and apply statistical and econometric techniques and their application to the analysis of financial information and data
- knowledge of portfolio selection, risk and risk management, and the macroeconomic context of international financial transactions
- skills in creative and critical thinking, problem-solving, data collection and analysis, and report writing.

WHY STUDY ECONOMICS AND FINANCE AT XJTLU?

- Develop both economics and finance skills, giving you excellent and varied career prospects;
- Take advantage of the IBSS Financial Lab and Trading Floor located on campus, which gives you access to a world of data for study and research purposes, including data feeds from Datastream and Thomson One, and training by Thomson Reuters staff on EIKON system, the leading to a TR EIKON training certificate;
- Connect with industry through internship and work experience opportunities;
- Gain a solid foundation for PhD studies in economics and related fields;
- Earn a University of Liverpool degree that is recognised by the Chinese Ministry of Education.

CAREERS AND FURTHER STUDY

Graduates from this programme are well prepared for roles such as portfolio manager, investment strategy analyst, director of research, market risk analyst, head of investor relations, senior economist and industrial economist. Graduates can find employment in the financial sector, and with central banks and other monetary financial institutions, as well as in international organisations, academia, research institutions and the wider business sector, especially within multinational enterprises. The programme also offers a solid foundation for pursuing a PhD.

MODULES

COMPULSORY MODULES

ECONOMETRICS
FINANCIAL ECONOMICS
MACROECONOMICS
TIME SERIES ANALYSIS
INTERNATIONAL FINANCE AND ECONOMICS
ECONOMICS AND FINANCE DISSERTATION

OPTIONAL MODULES

ADVANCED DERIVATIVES
MONEY AND BANKING
MICROECONOMICS
ADVANCED CORPORATE FINANCE
ADVANCED INVESTMENTS
ALTERNATIVE INVESTMENTS AND STRATEGIES
FIXED INCOME AND DERIVATIVE INSTRUMENTS

ADDITIONAL LEARNING ACTIVITIES

The completion of additional learning activities is required to obtain your masters degree. Normally, required ALA hours will be distributed evenly across each semester, amounting to 200 hours per semester. Part-time programmes will normally require 100 to 150 hours per semester.

✓ ATTENDANCE
Full time

🕒 DURATION
18 months

👤 ACCREDITATION
AACSB, EQUIS

🎓 QUALIFICATION
University of Liverpool
MSc Economics and Finance

MSC FINANCE

The MSc Finance programme gives you the tools to solve the practical financial problems that will create value for companies and enable societies to evolve.

You will gain theoretical knowledge in corporate finance and asset pricing as well as quantitative skills that will allow you to conduct research and analyse real-world problems. The study of financial economics and banking will allow you to excel in both the finance and economics sectors.

The programme combines traditional academic modules with research seminars, discussions with academics and visiting researchers and industry networking opportunities, to provide you with an integrated learning environment with strong connections to the real world.

The programme is delivered in the International Business School Suzhou (IBSS), one of an elite group of institutions worldwide to be accredited by the Association to Advance Collegiate Schools of Business (AACSB) and European Quality Improvement System (EQUIS).



WHAT YOU WILL LEARN

By the time you graduate from the MSc Finance, you will have:

- intellectual skills and theoretical understanding appropriate for the study of finance and quantitative analysis at postgraduate level
- practical skills in economics, mathematics and business linking finance theories to real-world application
- the experience of research, evaluation and analysis and the quantitative techniques to interpret complex data and research literature
- the ability to plan and undertake complex research projects in the field of finance

WHY STUDY FINANCE AT XJTLU?

- Benefit from opportunities to apply for teaching and research assistantships within IBSS as well as the wider University during your studies;
- Study a programme that combines theoretical knowledge, and quantitative and analytical skills to get you a competitive edge in the finance sector;
- Learn from industry leaders with the opportunity to attend networking and recruiting events with local companies;
- Take advantage of the IBSS Financial Lab and Trading Floor located on campus, which gives you access to a world of data for study and research purposes, including data feeds from Datastream and Thomson One, and training by Thomson Reuters staff on EIKON system, leading to a TR EIKON training certificate;
- Earn a University of Liverpool degree that is recognised by the Chinese Ministry of Education.

CAREERS AND FURTHER STUDY

Graduates from this programme are well prepared for finance-related roles within world financial markets, multinational corporations, investment banks, asset management companies, banks, non-financial companies, government agencies and consultancies, as well as in other financial institutions. The programme also offers a solid foundation for students interested in pursuing a PhD and an academic career.

MODULES

COMPULSORY MODULES

ECONOMETRICS
 ADVANCED DERIVATIVES
 MONEY AND BANKING
 TIME SERIES ANALYSIS
 ADVANCED CORPORATE FINANCE
 ADVANCED INVESTMENTS
 FINANCE DISSERTATION

OPTIONAL MODULES

FINANCIAL ECONOMICS
 ACCOUNTING AND FINANCIAL MANAGEMENT
 ALTERNATIVE INVESTMENTS AND STRATEGIES
 MACROECONOMICS

✓ ATTENDANCE
 Full time

🕒 DURATION
 18 months

👤 ACCREDITATION
 AACSB, EQUIS

🎓 QUALIFICATION
 University of Liverpool
 MSc Finance

ADDITIONAL LEARNING ACTIVITIES

The completion of additional learning activities is required to complete your masters degree. Normally, required ALA hours will be distributed evenly across each semester, amounting to 200 hours per semester. Part-time programmes will normally require 100 to 150 hours per semester.

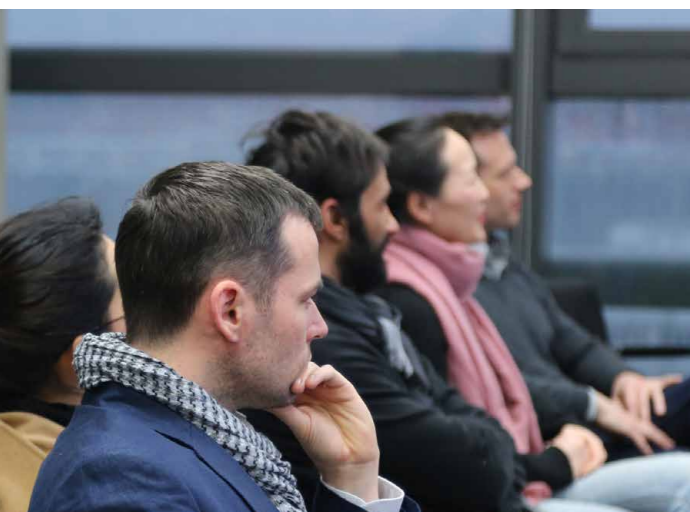
INTERNATIONAL MBA (PART TIME)

The International MBA programme combines rigorous academic modules with a wide range of professional development activities to foster your managerial and leadership capabilities.

Delivered in a unique environment that blends Chinese and Western cultures, the IMBA is an international passport that will give you an edge in the world's largest and most competitive markets.

Whether you are based in China, the UK, or elsewhere, this programme will give you the diverse management and leadership skills to work confidently in an international context.

The programme is delivered in the International Business School Suzhou (IBSS), one of an elite group of institutions worldwide to be accredited by the Association to Advance Collegiate Schools of Business (AACSB) and European Quality Improvement System (EQUIS). Less than 100 business schools worldwide have both AACSB and EQUIS accreditation.



WHAT YOU WILL LEARN

By the time you graduate from the International MBA programme, you will have:

- a broad theoretical and practical understanding of modern management in a globalised environment
- a strong awareness of how the external environment, including political, economic, social and technological factors impacts on the modern organisation at a national and international level
- the ability to research, analyse and find solutions to problems facing both local and globalised companies
- skills in critical thinking, analysis and problem-solving, as well as in report writing and making effective presentations.

WHY STUDY INTERNATIONAL MBA AT XJTLU?

- Benefit from the University's well-established and powerful network, including the alumni of the prestigious University of Liverpool Management School;
- Enjoy the flexibility of an IMBA programme that allows you to continue in full-time employment while you study;
- Study integrated, practice-focussed learning environment with strong connections to industry;
- Earn a University of Liverpool degree that is recognised by the Chinese Ministry of Education.

CAREERS AND FURTHER STUDY

The IBSS MBA curriculum is rigorous and subject to the UK quality assurance system. The degree is granted by our founding partner, the University of Liverpool, a 134-year-old UK institution and a member of the prestigious Russell Group. Students benefit from state-of-the-art module design, dynamic instruction and careful assessment.

MODULES

COMPULSORY MODULES

MANAGING THE ECONOMIC CONTEXT

MANAGING FINANCIAL RESOURCES

MANAGEMENT OF CHANGE AND INNOVATION

THE ORGANISATION IN THE STRATEGIC
CONTEXT

FINAL INDIVIDUAL PROJECT FOR IMBA

COMPETING IN THE GLOBAL MARKET PLACE

INTERNATIONAL MARKETING

NEGOTIATING IN INTERNATIONAL
ENVIRONMENT

OPERATIONS AND SUPPLY CHAIN
MANAGEMENT STRATEGY

✓ **ATTENDANCE**
Part time - Sep intake

🕒 **DURATION**
24 months

👤 **ACCREDITATION**
AACSB, EQUIS

🎓 **QUALIFICATION**
University of Liverpool
International MBA

ADDITIONAL LEARNING ACTIVITIES

Throughout the IMBA programme, traditional academic modules will alternate with seminars and meetings with key representatives from different industries and a range of other activities that provide an integrated and concrete learning environment with strong connections to the real world.



"I travel a lot for my job so XJTLU's location, and the flexible programme, was important for me. Studying this programme will benefit my career."

ALEX WALSCHEWSKI
INTERNATIONAL MBA
GERMANY



MSC INVESTMENT MANAGEMENT

We are at a historic point in time as China, the world's second largest economy, deregulates and grows its financial markets. In the coming years demand for graduates with a solid education in financial markets, securities and investment management is expected to grow significantly.

In the the MSc Investment Management programme, you will learn about the complexities of contemporary economics and financial principles and how these apply to decision-making in financial intermediation, savings and investment. While this is a practiced-based masters programme, it can also serve as a solid foundation for further study.

The programme is delivered in the International Business School Suzhou (IBSS), one of an elite group of institutions worldwide to be accredited by the Association to Advance Collegiate Schools of Business (AACSB) and European Quality Improvement System (EQUIS). Less than 100 business schools worldwide have both AACSB and EQUIS accreditation.



WHAT YOU WILL LEARN

By the time you graduate from the MSc Investment Management programme, you will have:

- a solid understanding of financial markets in China and internationally
- a strong foundation to undertake the CFA exam
- the ability to navigate a number of financial data systems including Thomson Reuters EIKON system, Bloomberg Terminal and Wind Financial Terminal, which are used throughout the financial markets and securities
- programming skills in accessing WRDS and CSMAR Financial Database
- specialist, technical knowledge in financial markets and securities.

WHY STUDY INVESTMENT MANAGEMENT AT XJTLU?

- Take advantage of the IBSS Financial Lab and Trading Floor located on campus, which gives you access to a world of data for study and research purposes, including data feeds from the Thomson Reuters EIKON system, Bloomberg Terminal, Wind Financial Terminal, Wharton Research Data Services (WRDS), and CSMAR Financial Database;
- Graduate with a degree recognised by the Chartered Financial Analyst Institute (CFA)'s University Recognition Program;
- Connect with industry through internship, networking and work experience opportunities;
- Earn a University of Liverpool degree that is recognised by the Chinese Ministry of Education.

CAREERS AND FURTHER STUDY

Graduates from this programme are well prepared for careers in the financial sector not only in China, but in any international bank or financial institution with ambitions to build their business in the world's second largest economy.

MODULES

COMPULSORY MODULES

FINANCIAL ANALYSIS
 QUANTITATIVE METHODS FOR FINANCE
 EQUITY: CASH AND DERIVATIVE INSTRUMENTS
 ETHICAL AND PROFESSIONAL STANDARDS IN FINANCE
 FINANCIAL DERIVATIVES
 ADVANCED CORPORATE FINANCE
 ALTERNATIVE INVESTMENTS AND STRATEGIES
 FIXED INCOME AND DERIVATIVE INSTRUMENTS
 PORTFOLIO MANAGEMENT
 INDUSTRY RESEARCH PROJECT

✓ ATTENDANCE
Full time

🕒 DURATION
18 months

👤 ACCREDITATION
AACSB, EQUIS

🎓 QUALIFICATION
University of Liverpool
MSc Investment Management

ADDITIONAL LEARNING ACTIVITIES

The completion of additional learning activities is required to complete your masters degree. Normally, required ALA hours will be distributed evenly across each semester, amounting to 200 hours per semester. Part-time programmes will normally require 100 to 150 hours per semester.

MSc MANAGEMENT

This dynamic, contemporary and innovative programme prepares you for management positions across a wide range of industries. It is also designed to assist current managers in preparation for more senior roles.

Open to those with an undergraduate degree in any discipline, the MSc Management programme offers you broad theoretical and practical knowledge of management. The modules cover many topics of relevance in China and internationally, including international business, strategy, finance, leadership, marketing and entrepreneurship. You will also complete a research project or dissertation on a management-related topic of your choice.

The programme is delivered in the International Business School Suzhou (IBSS), one of an elite group of institutions worldwide to be accredited by the Association to Advance Collegiate Schools of Business (AACSB) and European Quality Improvement System (EQUIS). Less than 100 business schools worldwide have both AACSB and EQUIS accreditation.



WHAT YOU WILL LEARN

By the time you graduate from the MSc Management, you will have:

- a rich understanding of management practices and theories
- insights into how to conduct a broad range of managerial functions and tasks
- an awareness of the demands of management in business
- research skills through project and dissertation work
- industry experience through work experience or networking events

WHY STUDY MANAGEMENT AT XJTLU?

- Benefit from XJTLU's strategic location in Suzhou - home to one of the China's largest economies and many Fortune 500 companies;
- Get support from IBSS's career development team who engage with national and multinational employers to identify the potential job opportunities for our students and graduates;
- Tailor your studies to suit your career ambitions with elective modules in entrepreneurship, big data and people management available;
- Earn a University of Liverpool degree that is recognised by the Chinese Ministry of Education.

CAREERS AND FURTHER STUDY

This programme includes career skills and personal development support to assist you with career evaluation, job searches, and professional skills development, such as:

- consultations with our career development team
- guidance on job search techniques
- coaching in writing cover letters and CVs as well as interview skills
- building and assessing soft competencies like working in teams, communication and presentation skills
- assistance in employment and work permit issues.

MODULES

COMPULSORY MODULES

MARKETING MANAGEMENT
 STRATEGIC ORGANISATIONAL DESIGN
 STRATEGIC BUSINESS ANALYSIS
 ACCOUNTING AND FINANCIAL MANAGEMENT
 BUSINESS LEADERSHIP
 INTERNATIONAL BUSINESS
 STRATEGIC OPERATIONS MANAGEMENT
 MANAGEMENT DISSERTATION

OPTIONAL MODULES

ENTREPRENEURSHIP AND BUSINESS CREATION
 BIG DATA - APPLICATIONS IN BUSINESS
 ORGANIZATIONAL BEHAVIOUR AND PEOPLE MANAGEMENT

✓ **ATTENDANCE**
Full time

🕒 **DURATION**
18 months

👤 **ACCREDITATION**
AACSB, EQUIS

🎓 **QUALIFICATION**
University of Liverpool
MSc Management

ADDITIONAL LEARNING ACTIVITIES

The completion of additional learning activities is required to complete your masters degree. Normally, required ALA hours will be distributed evenly across each semester, amounting to 200 hours per semester. Part-time programmes will normally require 100 to 150 hours per semester.

MSC OPERATIONS AND SUPPLY CHAIN MANAGEMENT

The MSc Operations and Supply Chain Management programme gives you a comprehensive understanding of operations and supply chain management and how it shapes the sales and profit potential of a business.

Delivered in collaboration with industry and the business community in the Yangtze River Delta region, it is one of the few English-language masters programmes of its kind in China

Through industry lectures and site visits, you will be able to analyse and examine the latest developments in operations and supply chain best practice. You will graduate with the knowledge and skills to succeed in senior managerial and strategist positions.

The programme is delivered in the International Business School Suzhou (IBSS), one of an elite group of institutions worldwide to be accredited by the Association to Advance Collegiate Schools of Business (AACSB) and European Quality Improvement System (EQUIS). Less than 100 business schools worldwide have both AACSB and EQUIS accreditation.



WHAT YOU WILL LEARN

By the time you graduate from the MSc Operations and Supply Chain Management, you will have:

- an understanding of how operations can be managed as a strategic resource the requirements of successful operations and supply chain practice
- the ability to apply the models, processes and tools used to analyse, design and implement operations and supply chain management and logistics solutions
- an understanding of the decisions involved in the selection of suppliers, and the role of the purchasing function
- a thorough understanding of the components of supply chains, the material and information flow interactions between them and the analytical and management processes that facilitate successful supply chain performance
- the skills to perform benchmarking using comparative performance techniques

WHY STUDY OPERATIONS AND SUPPLY CHAIN MANAGEMENT AT XJTLU?

- Benefit from XJTLU's strategic location in Suzhou - home to one of the China's largest economies and many Fortune 500 companies;
- Get support from IBSS's career development team who engage with national and multinational employers to identify the potential job opportunities for our students and graduates;
- Tailor your studies to suit your career ambitions to electives in accounting, project management, operations simulation and marketing management available;
- Learn how to identify and apply a range of operations management initiatives and techniques that can inform the development of an operations strategy;
- Earn a University of Liverpool degree that is recognised by the Chinese Ministry of Education.

CAREERS AND FURTHER STUDY

Graduates from this programme are well prepared for careers in a number of sectors including manufacturing, food and beverage, and pharmaceuticals. Our graduates have found employment in companies such as Jaguar, Bosch, Mondeleze, Accenture, Caterpillar, Daimler Chrysler, Deloitte Consultants, Ford Motor Company, GE, Maersk, Unilever, Unipart, Westinghouse and Cargill.

MODULES

COMPULSORY MODULES

- STRATEGIC BUSINESS ANALYSIS
- SUPPLY CHAIN OPERATIONS MANAGEMENT
- LOGISTICS AND PHYSICAL DISTRIBUTION
- STRATEGIC OPERATIONS MANAGEMENT
- STRATEGIC PURCHASING MANAGEMENT
- THEORY AND PRACTICE OF LEAN OPERATIONS
- SUPPLY CHAIN MANAGEMENT DISSERTATION

OPTIONAL MODULES

- ACCOUNTING AND FINANCIAL MANAGEMENT
- MARKETING MANAGEMENT
- MODELLING AND SIMULATION OF OPERATIONS
- FUNDAMENTALS OF PROJECT MANAGEMENT
- ORGANISATIONAL BEHAVIOUR AND PEOPLE MANAGEMENT

ADDITIONAL LEARNING ACTIVITIES

The completion of additional learning activities is required to complete your masters degree. Normally, required ALA hours will be distributed evenly across each semester, amounting to 200 hours per semester. Part-time programmes will normally require 100 to 150 hours per semester.



"The programme has helped me understand how effective and efficient supply chain management is essential to creating a lasting competitive advantage."

REBECCA HUBLER
MSC OPERATIONS AND SUPPLY CHAIN MANAGEMENT
AUSTRIA

ATTENDANCE
Full time
Part time

DURATION
18 months (f/t)
36 months (p/t)

ACCREDITATION
AACSB, EQUIS

QUALIFICATION
University of Liverpool
MSc Operations and
Supply Chain Management

MSc PROFESSIONAL ACCOUNTING

The MSc Professional Accounting programme has a strong focus on professional training, equipping you with the skills and knowledge to succeed in an international business career.

You will study the professional syllabus of the Institute of Chartered Accountants in England and Wales (ICAEW) and will obtain exemptions from all six professional-level papers of the exams needed to gain chartered accountant status (subject to validation of the programme by ICAEW), as well as receiving preparation to sit the final advanced-level papers.

The programme is delivered in the International Business School Suzhou (IBSS), one of an elite group of institutions worldwide to be accredited by the Association to Advance Collegiate Schools of Business (AACSB) and European Quality Improvement System (EQUIS). Less than 100 business schools worldwide have both AACSB and EQUIS accreditation.



WHAT YOU WILL LEARN

By the time you graduate from the MSc Professional Accounting, you will have:

- theoretical understandings appropriate to the study of accounting at postgraduate level
- an awareness of key current issues, theory and practice in the field of accounting
- skills in professional accounting and financial decision-making, evaluation and analysis of financial data and the techniques required to evaluate and act upon complex financial and tax-related issues encountered in practice
- the knowledge necessary towards qualifying and operating as a chartered accountant.

WHY STUDY PROFESSIONAL ACCOUNTING AT XJTLU?

- Benefit from XJTLU's strategic location in Suzhou - home to one of the China's largest economies and many Fortune 500 companies;
- Get support from IBSS's career development team who engage with national and multinational employers to identify the potential internship and job opportunities for our students and graduates;
- Earn a University of Liverpool degree that is recognised by the Chinese Ministry of Education.

CAREERS AND FURTHER STUDY

This programme is designed to prepare you to qualify as a chartered accountant with the ICAEW. Graduates will also be well prepared to undertake other professional accountancy exams, such as those offered by the Association of Chartered Certified Accountants.

MODULES

COMPULSORY MODULES

FINANCIAL STRATEGY
 FINANCIAL ACCOUNTING & REPORTING
 AUDIT & ASSURANCE
 BUSINESS STRATEGY & MANAGEMENT
 TAX COMPLIANCE
 BUSINESS PLANNING - TAXATION
 CORPORATE REPORTING & AUDITING I
 STRATEGIC BUSINESS MANAGEMENT
 CORPORATE REPORTING & AUDITING II
 INTEGRATED CASE STUDY

✓ ATTENDANCE
Full time

🕒 DURATION
18 months

👤 ACCREDITATION
AACSB, EQUIS, ICAEW

🎓 QUALIFICATION
University of Liverpool
MSc Professional
Accounting

ADDITIONAL LEARNING ACTIVITIES

The completion of additional learning activities is required to complete your masters degree. Normally, required ALA hours will be distributed evenly across each semester, amounting to 200 hours per semester. Part-time programmes will normally require 100 to 150 hours per semester.

“When you look into the detail of the syllabus, the assessment standard and procedures, you will aware that you are the focus of the Programme. Every module are well designed to help you to attain your professional qualification and the degree step by step.”

PADDY YU,
MSC PROFESSIONAL ACCOUNTING
CHINA



MSC PROJECT MANAGEMENT

The MSc Project Management programme will equip you with the skills and knowledge to successfully manage projects in a variety of industries and contexts in China and around the world.

Suitable for both experienced professionals and those at the beginning of their project management career, the programme will give you essential skills in the management of stakeholders' expectations, risk management and quality assurance of projects.

Combining theory and hands-on experience, you will learn how project management can be used as a tool to help grow business and achieve strategic objectives in an organisational setting.

The programme is delivered in the International Business School Suzhou (IBSS), one of an elite group of institutions worldwide to be accredited by the Association to Advance Collegiate Schools of Business (AACSB) and European Quality Improvement System (EQUIS). Less than 100 business schools worldwide have both AACSB and EQUIS accreditation.



WHAT YOU WILL LEARN

By the time you graduate from the MSc Project Management, you will have:

- an understanding of the role of project management and the project manager in the life of a project
- knowledge of the components, processes, tools and techniques in the project management discipline as well as the interactions between these elements
- a critical understanding of project management, management and leadership theories and applications and how they apply to projects locally and across international borders
- the skills to initiate, plan, execute, control, lead, evaluate and close projects on time, within budget and with consideration to quality constraints
- the ability to apply a range of techniques to determine, document and refine project goals, performance requirements, deliverables, constraints and risks as well as use project schedules, resource budgeting and quality in the lifecycle of a project.

WHY STUDY PROJECT MANAGEMENT AT XJTLU?

- Gain skills with universal relevance that can be used to shape the strategic direction of companies;
- Learn how to effectively plan, implement, control, monitor, and handover projects of various sizes and complexities in a highly competitive global marketplace;
- Graduate from a programme designed around globally recognised standards and frameworks such as PMI, IPMA, APM and GPM, giving you a pathway to gain highly sought-after certifications in project management;
- Receive fully integrated MS Project software training with 24/7 access to the software;
- Earn a University of Liverpool degree that is recognised by the Chinese Ministry of Education.

CAREERS AND FURTHER STUDY

Graduates from this programme are well prepared to work in project management roles across a range of industries including e-commerce, oil and gas, software, IT, construction, airlines, consulting, retail and manufacturing. As Asia continues to develop new business and economic, graduates are expected to enjoy excellent employment prospects as demand grows for project management professionals able to work confidently in an international context. The programme also provides a solid foundation for pursuing further study.

MODULES

COMPULSORY MODULES

FUNDAMENTALS OF PROJECT MANAGEMENT
PROJECT RISK MANAGEMENT
STRATEGIC BUSINESS ANALYSIS
PROJECT STAKEHOLDER MANAGEMENT
PROJECT LEADERSHIP AND GOVERNANCE
DISSERTATION/CONSULTANCY CAPSTONE PROJECT

ADDITIONAL LEARNING ACTIVITIES

The completion of additional learning activities is required to complete your masters degree. Normally, required ALA hours will be distributed evenly across each semester, amounting to 200 hours per semester. Part-time programmes will normally require 100 to 150 hours per semester.

✓ **ATTENDANCE**
Full time
Part time

🕒 **DURATION**
18 months (f/t)
30 months (p/t)

👤 **ACCREDITATION**
AACSB, EQUIS

🎓 **QUALIFICATION**
University of Liverpool
MSc Project Management

OPTIONAL MODULES

STRATEGIC ORGANISATIONAL DESIGN
SOCIAL MEDIA MARKETING
ACCOUNTING AND FINANCIAL MANAGEMENT
MICROECONOMICS
STRATEGIC PURCHASING MANAGEMENT
ENTREPRENEURSHIP AND BUSINESS CREATION
SOCIAL COMMERCE
STRATEGIC OPERATION MANAGEMENT
ORGANISATIONAL BEHAVIOUR AND PEOPLE MANAGEMENT

DEPARTMENT OF MATHEMATICAL SCIENCES

The Department of Mathematical Sciences has a strong reputation for student achievement and success. Our academic staff are internationally recognised for their high-quality research in a number of areas of modern mathematics. The mathematical and computational sciences are among the major research strengths of XJTLU, and our department is strongly committed to excellence in research and teaching.

The study of mathematics goes well beyond the improvement of a student's numeracy skills; it emphasises the development of strong analytical decision-making, modelling and forward-thinking skills as well as the importance of logical reasoning. Such skills are essential in many domains and are highly regarded by employers. For this reason, a degree in mathematics is held in high esteem in many other professional fields providing opportunities to pursue a multitude of careers.



MSc FINANCIAL MATHEMATICS

The MSc Financial Mathematics programme provides you with the advanced analytical training, quantitative knowledge and practical skill sets required to operate as a professional in modern financial institutions.

Offering a solid education in financial analysis, risk management and financial engineering, the programme is the perfect foundation for a successful career in the finance and banking industries. You will undertake advanced mathematics and programming modules designed with practical applications in mathematical and quantitative finance.

Our graduates can confidently work with complex financial data to provide innovative solutions to challenges in a range of business contexts.

WHAT YOU WILL LEARN

By the time you graduate from the MSc Financial Mathematics programme, you will have:

- an advanced understanding of financial mathematics and quantitative analysis
- practical mathematics and object-oriented programming skills linking finance theories to real-world application
- the ability to devise, plan and undertake complex research projects in the field of financial mathematics
- skills in research, evaluation and analysis and the quantitative techniques to evaluate and interpret complex data and research literature.

WHY STUDY FINANCIAL MATHEMATICS AT XJTLU?

- Enjoy a balance between theoretical and practical knowledge, which is crucial for a successful career in the financial industry;
- Gain experience in working with financial data and with different terminals, such as the Wind Financial Terminal that provides data on the Chinese market;
- Take advantage of our industry links with a number of networking and internship opportunities available;
- Earn a University of Liverpool degree that is recognised by the Chinese Ministry of Education.

CAREERS AND FURTHER STUDY

Graduates from this programme are well prepared for a range of roles in the business world in organisations including banks, investment firms, insurance companies, consulting services to the financial industry, and government regulation agencies. The programme also offers a solid foundation for pursuing a career in research or academia.

✓ **ATTENDANCE**
Full time

🕒 **DURATION**
18 months

🎓 **QUALIFICATION**
University of Liverpool
MSc Financial
Mathematics

MODULES

COMPULSORY MODULES

COMPUTATIONAL METHODS IN FINANCE I
INTRODUCTION TO PRICING AND HEDGING
FINANCIAL ECONOMETRICS
FIXED INCOME SECURITIES
STATISTICAL METHODS IN FINANCE
ARBITRAGE, EQUILIBRIUM AND PRICING
DISSERTATION

OPTIONAL MODULES

MICROECONOMICS FOR FINANCIAL MATHEMATICS
PORTFOLIO THEORY AND RISK MANAGEMENT
COMPUTATIONAL METHODS IN FINANCE II
ADVANCED FINANCIAL RISK MANAGEMENT

ADDITIONAL LEARNING ACTIVITIES

The completion of additional learning activities is required to complete your masters degree. Normally, required ALA hours will be distributed evenly across each semester, amounting to 200 hours per semester. Part-time programmes will normally require 100 to 150 hours per semester.



DEPARTMENT OF URBAN PLANNING AND DESIGN

The Department of Urban Planning and Design is a dynamic and international department that combines the best of urban planning and design theory, with the specifics of practice in the rapidly urbanising Chinese environment. Owing to XJTU's unique location and education system, this department provides students one of the most fascinating urban planning environments in the world.

Students studying urban planning and design develop understanding of the processes of spatial change in the built and natural environments and engage the arguments for intervening in these processes. Students develop the knowledge and skills to analyse, critique and ultimately contribute to the sustainability of urban and rural development both in China and around the world.



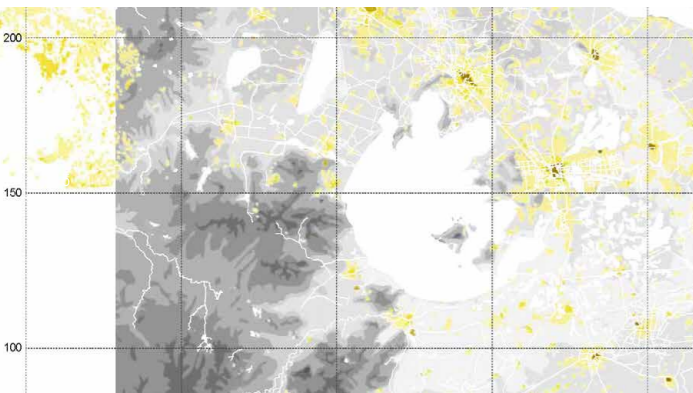
MSc URBAN PLANNING (SPECIALISATION IN URBAN DESIGN)

The MSc Urban Planning (specialisation in Urban Design) programme allows you to engage in the complex issues of urban space production in the dynamic Chinese context.

You will learn to consider the interplay between spatial design and social, economic, environmental and political issues evident in a range of urban settings. Taught with an interdisciplinary approach to the development of urban form, the programme is not limited to those with architecture or urban planning backgrounds - it is relevant to anyone interested in understanding the nature and production of spaces.

Our international teaching staff bring with them the best learning methods from some of the most prestigious universities in the world, offering you the chance to learn in a supportive, integrated learning environment.

Note: This programme is awaiting official recognition from the Ministry of Education of the People's Republic of China.



WHAT YOU WILL LEARN

By the time you graduate from the MSc Urban Planning (specialisation in Urban Design), you will have:

- strong critical, creative thinking and communication skills
- knowledge of the key theories and techniques of urban planning and design in a multidisciplinary context
- professional design skills in spatial analysis, representation (mapping, models), and conceptualisation (such as scenario-and vision-making).

WHY STUDY URBAN PLANNING (SPECIALISATION IN URBAN DESIGN) AT XJTLU?

- Study in the Suzhou-Shanghai region, one of the most exciting environments to learn about and experiment with urban design in the 21st century;
- Gain a multidisciplinary perspective with modules taught by both the Department of Architecture and the Department of Urban Planning and Design;
- Learn in an international environment from staff with strong academic backgrounds and industry experience;
- Earn a University of Liverpool degree.

CAREERS AND FURTHER STUDY

Graduates from this programme are well prepared for careers as urban designers in both public and private sector companies related to the built environment. Graduates can find employment in positions such as urban or regional planners, where they will develop plans for the use of land, help create communities, accommodate population growth, and regenerate facilities.

MODULES

COMPULSORY MODULES

FUNDAMENTALS OF URBAN DESIGN
PLACE-MAKING AND URBAN DESIGN
ARCHITECTURAL THEORY AND CRITICISM
URBAN DESIGN INQUIRY (STUDIO)
SUSTAINABLE URBAN PLANNING STRATEGIES
DISSERTATION

OPTIONAL MODULES

THEORY AND PRACTICE OF URBAN REGENERATION
POLITICS, SOCIETY AND PARTICIPATION
TOPICS IN ARCHITECTURAL HISTORY
HERITAGE, HISTORIC DISTRICTS AND CONSERVATION
SPATIAL ANALYSIS AND VISUALISATION

✓ ATTENDANCE
Full time
Part time

🕒 DURATION
18 months (f/t)
30 months (p/t)

🎓 QUALIFICATION
University of Liverpool
MSc Urban Planning
(Specialisation in Urban Design)

ADDITIONAL LEARNING ACTIVITIES

The completion of additional learning activities is required to complete your masters degree. Normally, required ALA hours will be distributed evenly across each semester, amounting to 200 hours per semester. Part-time programmes will normally require 100 to 150 hours per semester.

MSC URBAN PLANNING

The MSc Urban Planning programme provides you with an international grounding in urban planning centred on the theme of urban regeneration.

China is experiencing unprecedented urbanisation in terms of the speed and nature of growth. One of the key issues for future practitioners will be how to deal with the challenge of reusing, transforming and regenerating the existing urban fabrics of China's megacities in order to achieve a more sustainable model of urbanisation.

The programme suits students from a range of different backgrounds and it is not limited to those with an urban planning undergraduate degree. Through the programme you will gain the interdisciplinary knowledge and skills required to become an urban planner, capable of tackling urban regeneration challenges in diverse contexts, and of providing a vision for future cities.



WHAT YOU WILL LEARN

By the time you graduate from the MSc Urban Planning, you will have:

- knowledge of the key theories and techniques that allow you to approach urban planning in a critical, communicative, collective and people-oriented way
- a comprehensive understanding of contemporary urban problems and possible planning responses
- the professional competency necessary for effective work in the urban planning profession.

WHY STUDY URBAN PLANNING AT XJTU?

- Gain a multidisciplinary perspective on urban regeneration, learning from academics from a range of disciplines (including urban planning and design, project management, policy design and geography) in a research-led teaching environment;
- Benefit from the University's strategic location of Suzhou, which blends history and modernity, making it an ideal place to explore Chinese contemporary cities and planning practices;
- Earn a University of Liverpool degree that is recognised by the Chinese Ministry of Education and worldwide.

CAREERS AND FURTHER STUDY

Graduates from this programme are well prepared for careers in a range of areas including urban planning, policy development, urban design, and property development. Graduates may also find employment with community groups as an advocate to give them a voice in built environment decision-making processes, or with local and central government, and non-governmental organisations both national and international.

MODULES

COMPULSORY MODULES

THEORY AND PRACTICE OF URBAN REGENERATION

GOVERNANCE AND FINANCE OF URBAN REGENERATION

POLITICS, SOCIETY AND PARTICIPATION

PLACE-MAKING AND URBAN DESIGN

SUSTAINABLE URBAN PLANNING STRATEGIES

HERITAGE, HISTORIC DISTRICTS AND CONSERVATION

SPATIAL ANALYSIS AND VISUALISATION

FUNDAMENTALS OF PROJECT MANAGEMENT

DISSERTATION

✓ ATTENDANCE
Full time

🕒 DURATION
18 months

🎓 QUALIFICATION
University of Liverpool
MSc Urban Planning

ADDITIONAL LEARNING ACTIVITIES

The completion of additional learning activities is required to complete your masters degree. Normally, required ALA hours will be distributed evenly across each semester, amounting to 200 hours per semester.



“Studying here enables us to think and act globally in both academic work and daily life, which is the foundation for becoming global citizens.”

GAO DU
MSC URBAN PLANNING,
CHINA



SCHOOL OF FILM AND TELEVISION ARTS

The School of Film and Television Arts mixes digital media arts and film and television production and technology with performance and acting. The School relies on the advantage of international art education and the resource of Gold Finance film and television industrial chain. Research and teaching within the school takes place in areas such as communications studies, media technology, media theory, film post production and CG effects. State-of-art facilities support both students in the practical application of the skills they learn and academic staff in their research work.



MSc MEDIA AND COMMUNICATION

The MSc in Media and Communication offers you a wealth of knowledge and transferable skills for making an impact on the media world of today and tomorrow.

Media is at the heart of the majority of business operations today and to the uninitiated it presents a daunting, fast-changing picture. In this programme, we assist you in making sense of media phenomena, be they interactive, virtual reality-bound or associated with large legacy media complexes such as broadcasting or news gathering.

You will also receive guidance in applying your own value system along corporate social responsibility lines in order to steer through the many pitfalls today's globalised mediascapes present. You will graduate equipped with the necessary knowledge and skills to become a leader and change agent in a media world full of exciting opportunities.

WHAT YOU WILL LEARN

By the time you graduate from the MSc Media and Communication, you will have:

- an advanced understanding of key issues, concepts and theories, as well as the relationship between theory and practice, in the field of media and communication
- sound knowledge of media language and its iterations on different media platforms
- strong research skills with the ability to apply them to media analysis for work purposes
- an understanding of current methodology as it is embodied in media and communication practices
- an appreciation of the current views on communicative practices, including the importance of global and local media manifestations.

WHY STUDY MEDIA AND COMMUNICATION AT XJTLU?

- Learn from international staff with prominent scholarly publication records and extensive industry experience;
- Gain practical experience through internship opportunities in large national and international media companies and industry networking events;
- Create your own media content, such as the development and dissemination of short videos and video games;
- Study on a world-class campus with cutting-edge production facilities;
- Earn a University of Liverpool degree that is recognised by the Chinese Ministry of Education.

CAREERS AND FURTHER STUDY

Graduates are well prepared for a career in ever-enlarging, international media environments that require multifaceted, disruptive and cutting-edge media skills and opinion leaders. Graduates can find employment in roles such as digital media entrepreneur, media company executive, digital change consultant, public relations executive, international media facilitator, and print or broadcast journalist.

✓ **ATTENDANCE**
Full time
Part time

🕒 **DURATION**
18 months (f/t)
30 months (p/t)

🎓 **QUALIFICATION**
University of Liverpool
MSc Media and
Communication

MODULES

COMPULSORY MODULES

GLOBAL MEDIA CULTURES

CONTEMPORARY MEDIA THEORIES

DIGITAL ETHICS

INTERACTIVE AND EMERGING TECHNOLOGIES

CONTEMPORARY CHINESE MEDIA ENVIRONMENT

RESEARCH METHODS IN COMMUNICATION

PRACTICAL SKILLS DEVELOPMENT-DIGITAL VIDEO PRODUCTION

DISSERTATION

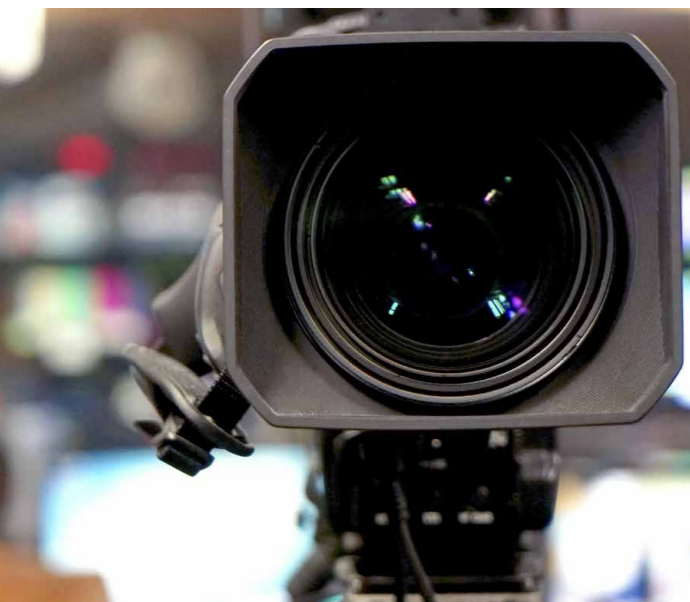
OPTIONAL MODULES

ADVERTISING AND PUBLIC RELATIONS

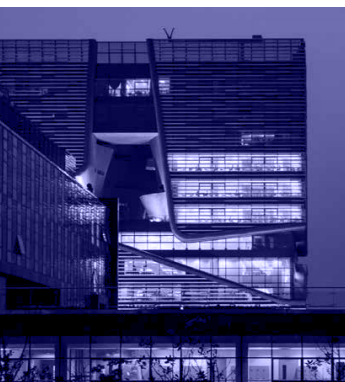
VIDEO GAMING

ADDITIONAL LEARNING ACTIVITIES

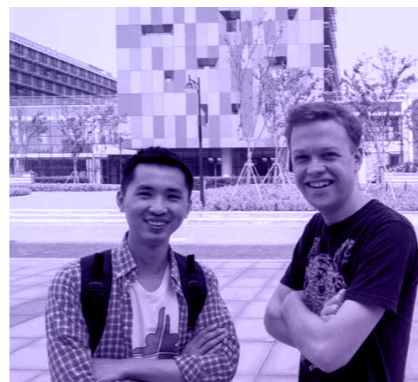
The completion of additional learning activities is required to complete your masters degree. Normally, required ALA hours will be distributed evenly across each semester, amounting to 200 hours per semester. Part-time programmes will normally require 100 to 150 hours per semester.



FOLLOW US ON SOCIAL MEDIA



WECHAT ID:
XJTLU-CHINA



INSTAGRAM.COM/XJTLU



FACEBOOK.COM/XJTLU



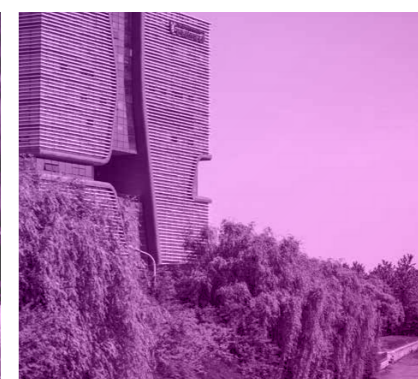
WEIBO.COM/XJTLU



LINKEDIN.COM/
SCHOOL/436551



TWITTER.COM/XJTLU





SUZHOU MAP

- SHOPPING & RESTAURANTS
- STUDENT ACCOMMODATION

www.xjtlu.edu.cn

international@xjtlu.edu.cn

+86 (0)512 8816 1889