

XJTLU

INTERNATIONAL
STUDENT
WELCOME GUIDE
2018-19



Xi'an Jiaotong-Liverpool University
西交利物浦大學

WELCOME TO MESSAGE 欢迎



Thank you for choosing Xi'an Jiaotong - Liverpool University for a unique and rewarding learning experience. This booklet is designed to make your transition to XJTLU and China as smooth as possible. The guide is arranged in the stages you normally make as a student joining XJTLU. Find time to read this guide and if you still have questions, we are here to help!

Every effort has been made to ensure the accuracy of the information in this booklet which is published annually. Everything is correct at the time of publication but things change! Check the webpage- prepare your arrival- which is regularly updated in case of changes since publication.

We look forward to seeing you soon in Suzhou!

XJTLU Global Team

CONTACT US!

International Student Engagement team:
Tel: +86 512 8188 4746/8188 0406/8818 8316
Monday - Friday 9am - 5pm
Email: Global@xjtlu.edu.cn

CONTENTS

STEP 1: SUBMIT YOUR APPLICATION	6
STEP 2: CONFIRM YOUR OFFER	7
STEP 3: PAY DEPOSIT/TUITION FEE	8
STEP 4: BOOK ACCOMMODATION 预定住宿	10
STEP 5: APPLY FOR X VISA	12
STEP 6: BOOK AIRPORT PICK-UP SERVICE	14
WHEN THINGS GO WRONG!	16
STEP 7: PRE-TRAVEL INFORMATION	18
STEP 8: ONLINE REGISTRATION AND OPTIONAL MODULE SELECTION	21
STEP 9: ACCOMMODATION CHECK-IN	22
STEP 10: POLICE REGISTRATION WITHIN 24 HOURS AFTER ARRIVAL IN CHINA	23
STEP 11: RESIDENCE PERMIT APPLICATION	24
STEP 12: INDUCTION PROGRAMME	25
STEP 13: CHINESE BANK ACCOUNT OPENING	26
STEP 14: TUITION AND NON-TUITION FEES PAYMENT	27
USEFUL INFORMATION FOR LIVING IN SUZHOU	31
LANGUAGE AND CULTURES	31
BUDGET	34
LAWS AND POLICIES	35
HEALTH & SAFETY	36
SHOPPING AND EATING	40
SPECIALIZED DIETS	45
COMMUNICATIONS	46
TRANSPORT	50
TRAVELLING IN CHINA	52
RELIGION 宗教	54
HOLIDAYS	55
INFORMATION TO SUBMIT TO XJTLU GLOBAL AFTER YOUR ARRIVAL	56



STEP 1: SUBMIT YOUR APPLICATION

The application deadline for UG, PG and Non-Degree Chinese Language courses (autumn course) is **June 30th 2018**. Those **applying and confirming their offer and paying their deposit by May 31st** are eligible to receive the **Early Bird discount**. For Exchange and visiting students, please follow the application deadlines given to you by your home university.

XJTLU has a range of scholarships available to international students. The University entry scholarships are available for application from September to the application deadline. The other scholarships are provided externally and have variable deadlines. They are usually open in the spring but have a narrow window for applications. Check the webpage for up to date information and read our mailshots where we announce all scholarships as they become available .

SCHOLARSHIPS:

- Jasmine Scholarship: http://www.studyinjiangsu.org/lxjsxmg1/scholarship_toGoven.do
- Talent Selection Scholarship: http://www.studyinjiangsu.org/lxjsxmg1/tsp_info.jsp
- Higher Education Town Scholarship: <http://www.xjtlu.edu.cn/en/study-with-us/admissions/scholarships> (announcement through XJTLU)
- University Entry Scholarship: <http://www.xjtlu.edu.cn/en/study-with-us/admissions/scholarships>

STEP 2: CONFIRM YOUR OFFER

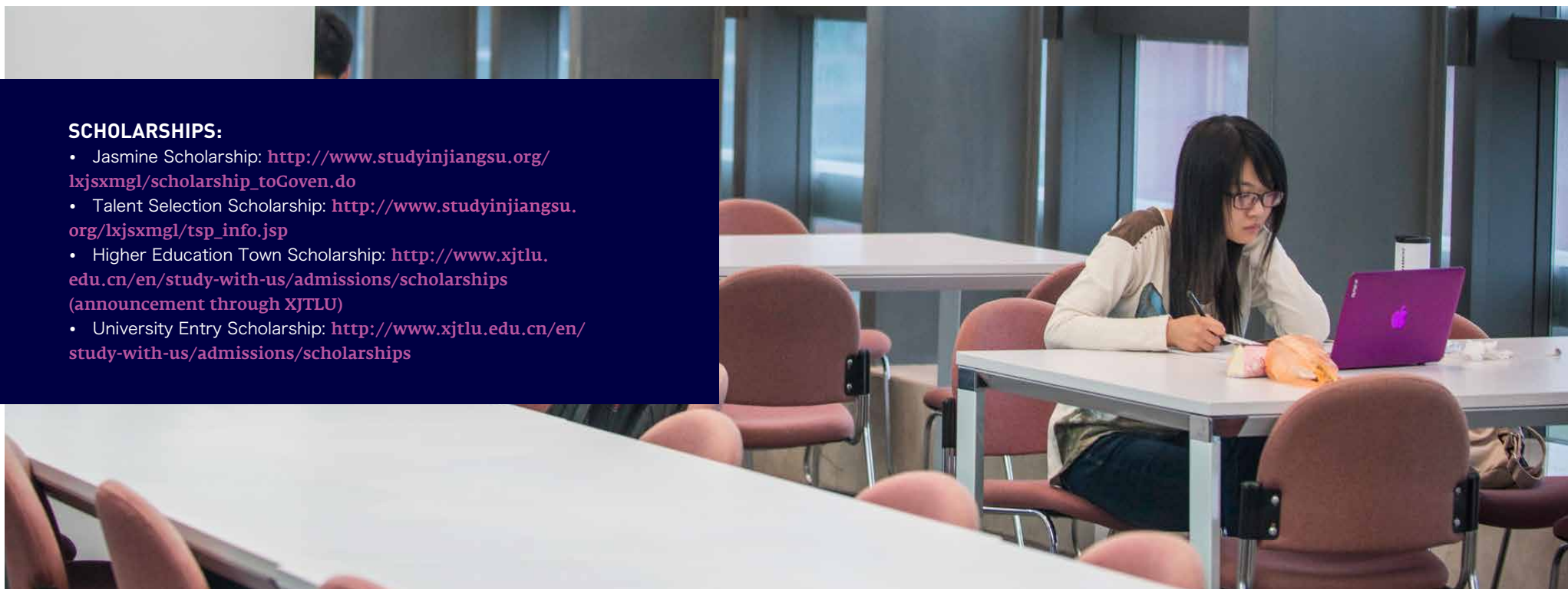
Depending on whether you meet the total requirements or whether you need to provide the university with any additional documents, you will receive either a conditional or unconditional offer.

Non-Degree Chinese language, Visiting and Exchange students are likely to simply receive an offer.

You are recommended to confirm your offer ASAP, since it takes time to fulfill all following steps as some steps can only start when the former ones are completed.

Here are the timelines for the key activities for your reference:

- Confirmation of an international bank transfer: 1-2 weeks
- Courier of Admission Notice and JW202 Form for visa application: 1-2 weeks
- Visa application: 1 week (it might take longer in some countries)
- Accommodation booking: location of your accommodation depends on when you book it with us



STEP 3: PAY DEPOSIT/TUITION FEE

After accepting your offer, use the following instructions to pay a non-refundable deposit or tuition fee to secure your place at XJTLU.

For Exchange and visiting students, please follow the payment details given to you by your home university.

Non-Degree Chinese Language students do not pay a deposit. They must pay their tuition fees in full after confirming their offer.

The paper copies of your Admission Notice and JW202 Form will be couriered to you when the payment of your deposit or tuition fee is confirmed by the university finance office, so please email the receipt to international@xjtlu.edu.cn for confirmation purpose right after you finish the transaction with the bank.

BANK DETAILS	
BENEFICIARY NAME	Xi'an Jiaotong-Liverpool University 西交利物浦大学
BENEFICIARY ADDRESS	111 Ren'ai Road, Dushu Lake Higher Education Town, Suzhou Industrial Park, Suzhou, Jiangsu, China 215123 江苏省苏州市中国新加坡工业园区, 独墅湖科教创新区仁爱路111, 邮编: 215123
TO PAY IN USD OR GBP	
ACCOUNT NUMBER	010-010320-055 (USD) 010-010320-056 (GBP)
SWIFT CODE	HSBCCNSHSUZ
BANK NAME	HSBC Bank (China) Company Limited, Suzhou Branch 汇丰银行苏州分行
BANK ADDRESS	Century Financial Tower, No.1 Suzhou Avenue West, Suzhou Industrial Park, Suzhou, Jiangsu Province, China 215021 江苏省苏州市中国新加坡工业园区, 苏州大道西1号世纪金融大厦, 邮编: 215021
TO PAY IN CHINESE RMB (PAYMENT FROM MAINLAND CHINA ONLY)	
ACCOUNT NUMBER	550701040006923
BANK NAME	Agricultural Bank Of China, SIP Xietang Sub-Branchw 中国农业银行苏州工业园区斜塘支行
BANK ADDRESS	No. 2178 Area A, Lianfeng Plaza, SIP, Suzhou, China 215028 苏州工业园区娄封东区联丰广场A区2178号, 邮编: 215028

Notes:

- Please make sure to include student's name and application number as supplementary information when making the transaction.
- The bank may charge a service fee, which will be deducted from the amount of money you transfer. When payments are made in USD/GBP, your bank's exchange rate used to convert to RMB may be different from the rate the University

follows. These may result in an outstanding fee balance for you to pay before you can complete registration. To avoid this, please make sure you cover all the possible shortages when making the payment.

- Once the transaction has been made, please send the proof of your payment to International Student Recruitment and Support via e-mail at international@xjtlu.edu.cn
- The deposit for the degree programme is 10,000rmb and will be counted as part of your total tuition fees.



STEP 4: BOOK ACCOMMODATION 预定住宿

As to accommodation, international students have three options which can be booked through the university. All these options are open to all international students on a first come, first serve basis.

1. Parfait International Apartment
2. Parfait Hotel & Apartment
3. MBA Hotel

All these options are dedicated to student use and located within 20 minutes walking of the campus. At the time of writing option 1 is the most popular with international students detailed information of these accommodations can be found on the university website: <http://www.xjtlu.edu.cn/en/life-at-xjtlu/accommodation>.

In order to live in these places, international students are required to book their accommodations on GECKO system before 15th July 2018.

Accommodation booking link: <https://app-eu.geckoform.com/public/#/modern/FOEUo265dLoutRAK>.

Please be aware that your photo will be also collected on the same GECKO form for your student ID card and social insurance card processing. If you do not require university accommodation then simply leave the accommodation section blank but don't forget to upload your photo!



Addresses of accommodations in English and Chinese:

PARFAIT INTERNATIONAL APARTMENT / 芭菲国际公寓
Address: No. 8 Xuetang Street, Dushu Lake Science & Education Innovation District, Suzhou Industrial Park / 苏州工业园区独墅湖科教创新区雪堂街8号

PARFAIT HOTEL & APARTMENT / 文萃酒店公寓
Address: No. 8 Xuetang Street, Dushu Lake Science & Education Innovation District, Suzhou Industrial Park / 苏州工业园区独墅湖科教创新区雪堂街8号 (文萃广场锦江之星东)

MBA APARTMENT // MBA酒店公寓
Address: No. 621 Linquan Street (close to Wenxing Plaza), Dushu Lake Science & Education Innovation District, Suzhou Industrial Park / 苏州工业园区独墅湖科教创新区林泉街621号 (近文星广场)
Reception landline: 0086 512 6265 6588

Step 4 status: Finished Not finished

STEP 5: APPLY FOR X VISA

In order to come to China and study at XJTLU, you are required to apply for a student visa. The student visa is called an X type visa which means 学生 Xue Sheng (student) in Chinese. You need to make the application in our own country or where you are living before entering China. Your first step will be to check the location and guidelines specific to your nationality on <http://www.visaforchina.org>

There are two types of X visa which relate to the duration of your study programme – one for long term study (more than 6 months) and one for short term study. For long-term students, you enter China using the X visa and then need to go through an immigration process to obtain a Residence Permit (RP). The RP brings all sorts of benefits such as renting property, legal internships etc.

Differences between the two type of X visas are as follows:

TYPE	PROGRAMME DURATION	ENTRIES TO CHINA	DO I NEED A RESIDENCE PERMIT?	COST
X1	Over 180 days	Multiple	Yes. within 30 days after arriving in China	<ul style="list-style-type: none"> Application fee (depends on country). Health check after arrival in China (RMB 318) Residence Permit RMB 400/year
X2	Less than 180 days	Single	No	Only application fee in your home country

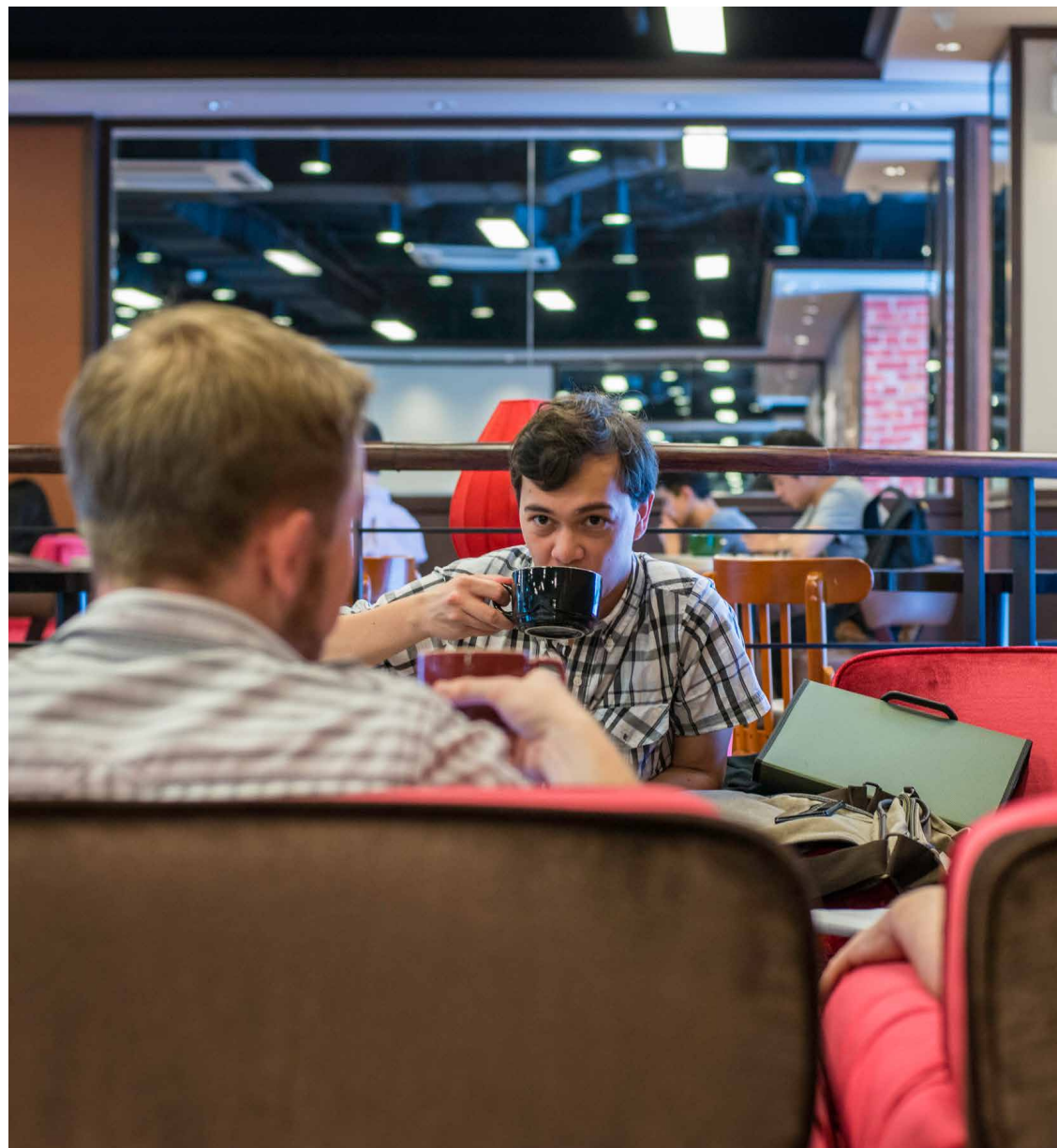
You need the following documents for X visa application:

1. Original Admission Notice (Sent to you by XJTLU)
2. JW202 Form (Sent to you by XJTLU)
3. X Visa Application Form downloaded from <http://www.visaforchina.org> or the visa application section on the website of the Chinese embassy in your own country
4. Any extra requirements listed on <http://www.visaforchina.org> or the visa application section on the website of the Chinese embassy

You need to keep the Admission Notice and JW202 Form safe after you have applied for the visa and bring them to China with you. You need them for your enrolment and immigration processes. If, for any reason, the Chinese Embassy/Consulate do not return them to you please ask them to!

Note: X2 visa holders must go through the same visa conversion procedure within the first teaching week at XJTLU if they wish to have the benefits which multiple entry residence permit can bring them.

Step 5 status: Finished Not finished



STEP 6: BOOK AIRPORT PICK-UP SERVICE

We provide a free pick up service to all new international students at Pudong Airport and Hongqiao Airport in Shanghai on 21, 22 and 23 August 2018. You must advance book this service <https://app-eu.geckiform.com/public/#/modern/FOEUo265MsfhxxOe>.

The pick-up service schedule is:

TUESDAY 21ST	12.30
AUGUST	18.30
WEDNESDAY 22ND	12.30
AUGUST	18.30
THURSDAY 23RD	12.30
AUGUST	18.30
PUDONG AIRPORT	Starbucks Terminal Two 星巴克
MEETING POINT	Go right at arrival exit point. Starbucks is near to the right side of the arrival doors. This area is crowded so you may not spot it immediately due to crowds blocking your view.
HONGQIAO AIRPORT	KFC Terminal One 肯德基
MEETING POINT	Exit the arrival gate and turn left. KFC is in the corner of the terminal within sight of the arrival area.

At each meeting point look for the XJTU 'camp' with the XJTU pick up sign. You can call XJTU Global Engagement Team on 0086 153 7145 1021 for any emergency case at the airport.

IF YOU CAN'T USE THE PICK-UP SERVICE?

If you cannot arrive on 21, 22 and 23 August 2018, there are plenty of public transport option to get to XJTU. From the airport there are direct buses. Trains go from Hongqiao airport direct to Suzhou. See <http://www.xjtlu.edu.cn/en/about/visit-us> for more information.

BOOKING A PRIVATE TAXI

XJTU can book you a private taxi from a third party commercial supplier. The rate will be fixed in advance (350-450 depending on airport) and you should pay the driver directly. Taking a private vehicle is at your own risk. To book a taxi you need to provide us with following information via email international@xjtlu.edu.cn.

STUDENT NAMES	
EMAIL ADDRESS	
FLIGHT NUMBER	
ARRIVAL AIRPORT	<input type="checkbox"/> Pudong Airport <input type="checkbox"/> Hongqiao Airport
ARRIVAL DATE AND TIME (CHINA TIME GMT+8)	
PHONE NUMBER	
NUMBER OF CHECKED BAGS (I.E. - NOT HAND LUGGAGE)	

The single trip from the airport to any place in Suzhou will cost you RMB400 and you need to pay the money to the taxi driver right after the service.

Step 6 status: Finished Not finished



STARBUCKS

KFC

WHEN THINGS GO WRONG!

In most cases travel is smooth but in case you have a last minute change of plan, unexpected delay or cancellation the best laid plans may go awry.

WHAT DO I DO IF MY PLANE IS DELAYED?

If you know before takeoff that there will be a delay please send your name and estimated delay to international@xjtlu.edu.cn and we will adjust the pickup service accordingly.

If the delay occurs on the journey email if you can but this might not be possible. XJTU staff will check live flight arrivals and will know if your plane has incurred delays so don't worry. After arrival follow the normal steps and someone should be waiting for you as normal. If you are severely delayed, it is likely that the student helpers will have left with other students only leaving the driver. The driver should have the university sign and be in the designated pick up area. Many illegal drivers operate at the airport and you may be approached by such a driver-he may give you the impression he is your driver. If you are not confident you have located the right driver please contact the emergency supervisor to check (see below)

WHAT IF I AM STUCK IN CUSTOMS OR THERE IS A DELAY AFTER THE PLANE HAS LANDED? AND WHAT IF I CAN'T FIND YOU?

XJTU can book you a private taxi from a third party commercial supplier. The rate will be fixed in advance (350-450 depending on airport) and you should pay the driver directly. Taking a private vehicle is at your own risk Don't worry...if you are stuck then it likely other students are too! The staff will check with arrival info to discover if delays are occurring. If when you enter the arrival halls you do not see the XJTU 'camp' have a good look in case you missed it first time. If you cannot find the pickup service go to International Arrivals Information Point which is the backup pick up location. Once at the info point please wait there and try and contact us. Ask if you can use their phone to contact us-

Chinese language 'I am lost-can I call this number 0086 153 7145 1021?'我迷路了, 您能帮我打一下0086 153 7145 1021这个电话号码吗?

HOW CAN I CONTACT XJTU AFTER ARRIVAL?

If your phone is working you can phone or text on 86 153 7145 1021. Please keep your phone turned on even if you can't make outbound calls - we may be trying to call you. You can buy a local SIM card at the airport or try free Wi-Fi in some cafes and then use Skype or another web based free service. Sending an email to us (international@xjtlu.edu.cn) will also work as we will be checking the account at that time to check if missing students have made contact. The International Arrivals Information Point can also call our emergency contact number for you-give them the number and ask them to call

WHAT IF I LOSE MY BAG?

If your checked luggage does not appear go to the help desk in the luggage hall. You will need to fill in a form. The address and contact number for the luggage to be delivered to at XJTU is:
Central Building -108E, Xi'an Jiaotong - Liverpool University, 111 Ren'ai Road, Dushu Lake Science & Education Innovation District, Suzhou Industrial Park, Suzhou 215123
苏州市工业园区独墅湖科教创新区仁爱路111号, 西交利物浦大学中心楼108E室, 邮编: 215123

Keep the tickets and forms they give you. The luggage is normally delivered within 1-2 days.

IF I TOTALLY MISS THE PICKUP SERVICE AND CAN GET NO HELP, HOW DO I GET TO THE UNIVERSITY BY PUBLIC TRANSPORT OR TAXI?

If you missed the latest airport pick-up bus which departs at the airport at 6:30pm, you can stay in a hotel room in or close to the airport, and catch up with the early airport pick-up bus on the next day.

If you want to come to Suzhou immediately, you can use the airport public coach or taxi. The coach ticket can be purchased at the coach ticket centre in Terminal 2. You can easily find it by using the directions in the airport or asking the information point.

Schedule for the airport public coach:

PUDONG AIRPORT - HONGQIAO AIRPORT - SUZHOU INDUSTRIAL PARK	9:05, 10:00, 10:40, 11:10, 11:40, 12:10, 12:45, 13:30, 14:15, 14:50, 15:20, 16:10, 16:50, 17:20, 18:10, 18:50, 19:40, 20:30, 21:00
---	---

If you use taxi, please walk out of the arrival hall to find taxis waiting on the road. The licensed taxi is shown in the pictures below:



Normally there is a sign of "Taxi" on the top of the cab and they use meter to charge the transport fee. One single trip from Shanghai Pudong Airport to Suzhou will cost around 600rmb, from Hongqiao to Suzhou around 400rmb.

STEP 7: PRE-TRAVEL INFORMATION

VACCINATION

Realistically, you are not in a rural or tropical region of China so you are unlikely to come into contact with Cholera, Rabies, Tick-borne encephalitis or Japanese encephalitis; however, before you leave for Suzhou, you are advised to:

- Make sure you are up to date with vaccinations, for example, TB, Typhoid, Polio and Tetanus
- Make sure you have vaccinated yourself against Hepatitis A.
- Have Japanese encephalitis vaccine if you planning to travel in more rural places in China (especially in tropical areas) and/or South East Asia
- Consider rabies vaccine especially if traveling to Tibet

Please talk to a travel nurse or other medical professional in good time for professional advice on vaccination.

INTERNATIONAL TRAVEL INSURANCE

For the sake of protection of yourself and your valuable belongings, we recommend you to buy an international travel insurance to cover to your trip to China. Please consult the international travel insurance provider for more information.

DOCUMENTS TO BRING TO CHINA

- Passport
- 5 copies of your passport information page and 1 copy of your Chinese visa page
- Pictures of your passport information page and Chinese visa page in your mobile phone
- 2 passport photos (white background)
- Original Admission Notice and JW202 Form returned to you by the Chinese embassy or consulate
- Financial documents to prove you have paid the deposit, tuition and non-tuition fees
- Scholarship certificate (if applicable)

MONEY

- Confirm with your bank on whether your credit card can be used in China or not
- Prepare enough Chinese currency in cash to pay accommodation deposit and utility fees when checking in the accommodation (around 3,500RMB)
- Prepare enough Chinese currency in cash for yourself to buy food or pay transports within the first few weeks

PACKING

Except towels, linens, bedding, cooking utensils which will be provided by the accommodation provider or bought at reasonable prices in Suzhou, you are recommended to bring following things to China:

- Adapter for your electronic devices
- Special medications prescribed by your doctor
- Clothes and shoes (only if you cannot find your sizes in China)

When packing up, you should consider following factors:

WEATHER

Suzhou is located in the south-east of China, in the subtropical humid monsoon

climatic region with four distinct seasons, mild temperature and abundant rainfall. The daytime temperature averages 34°C in July/August, the hottest month, and around 0-3.0 °C in January/February, the coldest month.

More information can be found on:

<http://www.weather-forecast.com/locations/Suzhou/forecasts/latest>.

ELECTRICITY

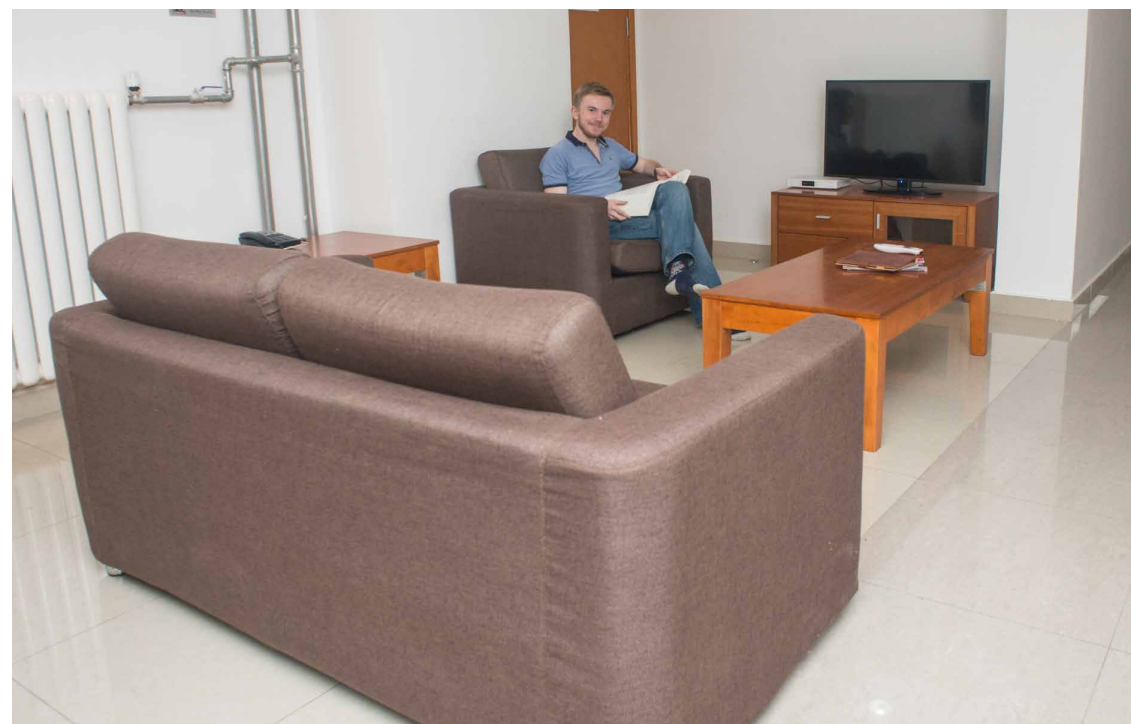
The electricity in mainland China is generally 220V, 50HZ AC (Hong Kong is 200V; Taiwan is 110V), so please check whether the voltage on your devices is compatible or not. For sensitive devices it is best to check that the cable has a transformer, especially if you are coming from the USA.

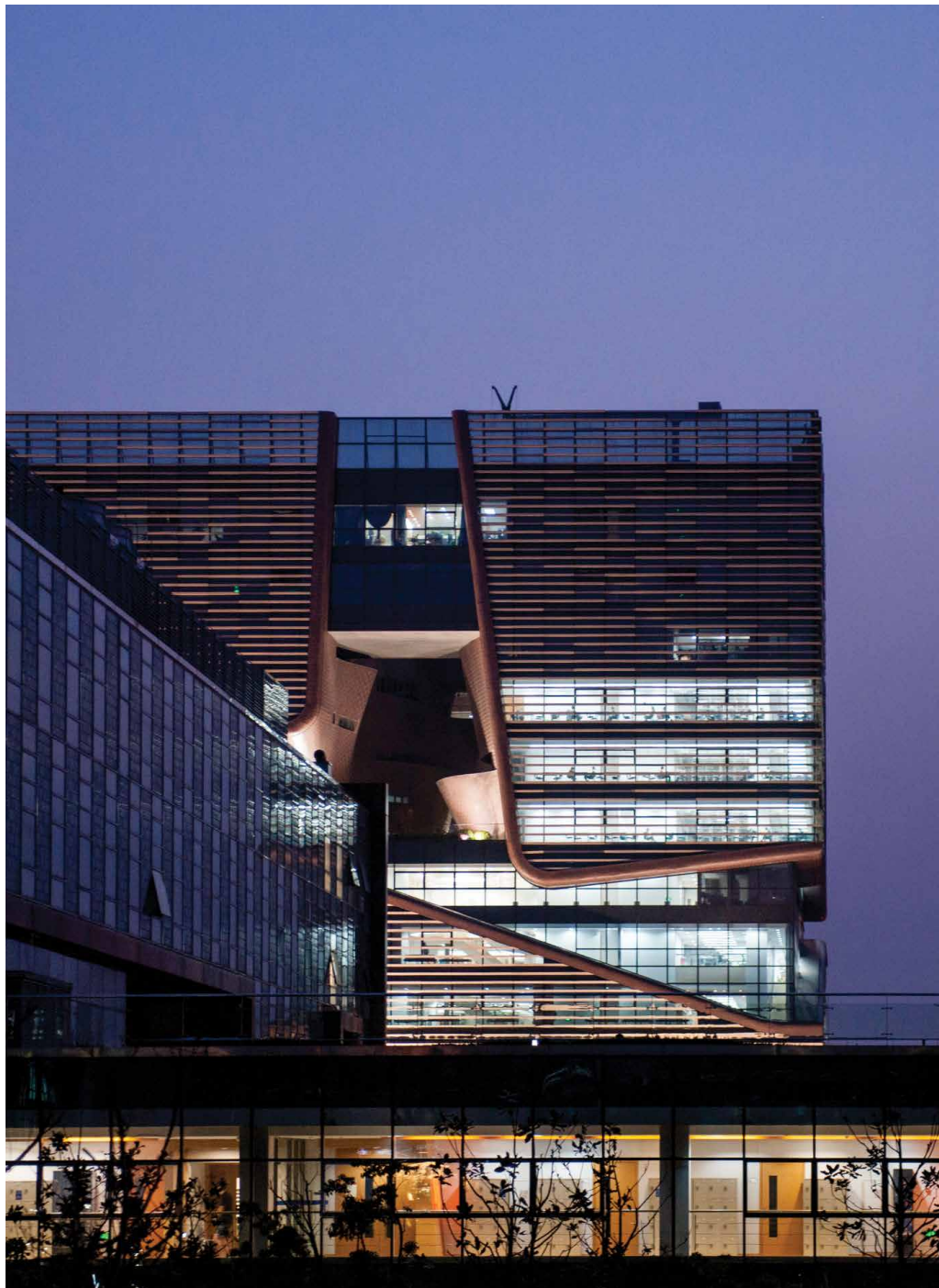
Sockets commonly used here:



Whilst it is very easy to buy electronics in China, they are not necessarily cheaper than anywhere else in the world and the quality cannot be guaranteed even when shopping in a 'legitimate' tech shop.

Step 7 status: Finished Not finished





STEP 8: ONLINE REGISTRATION AND OPTIONAL MODULE SELECTION

All students have to use their XJTLU student accounts to register on E-bridge: https://ebridge.xjtlu.edu.cn/urd/sits.urd/run/siw_lgn. The student account and online registration manual will be ready in early August 2018, and we will send them to students via email.

Student information, is used for many important purposes, for example, registration in the system of the Chinese Ministry of Education for student status and degree recognition, emergency contact, social and commercial insurance purchase and reimbursement, scholarship application and awarding, visa application and so on, students must provide genuine and complete information when registering in the university system. All students no matter their duration of stay MUST register.

Notes for UG Students:

Y1 UG students should also use their accounts to select optional modules on ICE, which is a system for students to check their modules, class and examination schedules, and submit their assignments.

Please do not hesitate to email international@xjtlu.edu.cn should you have any problem using your account to log in the E-Bridge and/or ICE system.

Notes for Exchange and Visiting Students:

Exchange and Visiting students need to select modules. Follow this advice and any requirements set by your home university.

MODULE SELECTIONS

Any modules exchange students select should have been approved by their home university they submit it to XJTLU. Students who want to make changes to their modules selection should send an email to studyabroad@xjtlu.edu.cn as early as possible. XJTLU will not accept any request later than the 1st Friday after semester starts.

TRANSCRIPTS

Semester 1 provisional transcripts will be published in e-bridge on around 11 March 2019. Original copy will be posted to the Study Abroad Office at students' home university in middle March. Semester 1&2 final marks will be published in e-bridge on around 23 July 2019. Original copy will be posted to the Study Abroad Office at students' home university in late July.

EXAMS AND RE-SIT

Exchange students must follow XJTLU academic calendar and exam schedules. Unlike the other universities' practice, XJTLU doesn't consider any special arrangement for exchange students.

The S1 & S2 re-sits will take place between 29 July and 2 August 2019. Re-sit results will be published in e-bridge in late August.

Step 8 status: Finished Not finished

INDUCTION WEEK ACTIVITIES

STEP 9: ACCOMMODATION CHECK-IN

XJTLU provides onsite support to help check into the accommodation for all students arriving for the pick-up services on August 21st, 22nd and 23rd.

For check-in, students need:

- Original passport
- Refundable deposit in cash (RMB 2,000 in MBA and RMB 3,000 in Parfait)
- Utility fees (water/electricity) in cash (approximately RMB500)
- Three-month rents to be paid in cash or with a bankcard.

The Checking –in process involves signing the rental contracts (in English) and you may need to wait for other students arriving at the same time as you in the queue. A bit of patience is required, especially after a long journey, but take this chance to meet your new students colleagues and neighbours.

Before signing any contract, students are strongly recommended to:

- Read the contract carefully
- Check whether all items listed on the contract have been provided in the accommodation
- Check how good the provided items are
- Request the property management officer to make a note on the contract if something in the accommodation is missing or broken

The accommodation is hotel style- Rent costs vary depending on the length of your stay in the accommodation. Longer contracts have a lower day rate so you have an advantage in signing a longer contract. If you do choose to check out early then the day rate will be re-calculated to reflect your actual stay length and be deducted from your deposit.

Please be kindly noted that:

- The deposit receipt must be given back to the reception when claiming your money back
- The utility fee receipt should be kept well as you need it to check with the reception when you doubt the usage of the electricity or water
- The rent varies depending on the length of your stay in the accommodation (if you fail to fulfill your contract and check out early, the accommodation provider will count how many days you actually lived in the accommodation and charge you at the price which matches the length of the contract)

Step 9 status: Finished Not finished



STEP 10: POLICE REGISTRATION WITHIN 24 HOURS AFTER ARRIVAL IN CHINA

Foreign nationals moving to China are required to register with the nearby police station after they arrive. All students at XJTLU will need to do this in the station less than 10 minutes' walk from campus.

Police registration must be completed within 24 hours after they arrive in China and check into an accommodation. The police office is open every day except Sundays and national holidays.

Take your passport and the paper given to you when you checked into the accommodation. If your first night in China was in a hotel you need to ask the hotel to register you in their system connected with the police station's accommodation registration system. If they cannot do that for you, please ask them for instructions on how to register with the police.

After the police registration, foreign students will receive an Accommodation Registration Form (临时住宿登记表), which will be used for residence permit application in the Exit and Entry Bureau and for archive purpose with the accommodation provider (a photocopy of it will work).

If you don't register with the police then you may end up with a fine of RMB 200/day and/or affect the application for a residence permit!

Step 10 status: Finished Not finished

STEP 11: RESIDENCE PERMIT APPLICATION

International students, who will stay in China for more than 6 months have to apply for a residence permit within 30 days after their arrival in China. The 30 days are counted from the entry date which is indicated on the Chinese entry stamp on passport. XJTLU will help you apply for this residence permit.

In order to help the new international students settle down quickly XJTLU organises following activities to facilitate the residence permit application process:

- Delivering residence permit application information session in the induction week
- XJTLU Global Welcome Reception
- Instructing students to complete Residence Permit Statement Letter and Residence Permit Application Form
- Checking application documents for students
- Booking appointments for students to apply for residence permit at the Exit & Entry Bureau

Before actual application at the EEB need-

- Residence Permit Application Form
- XJTLU Residence Permit Statement Letter
- JW202 Form (given back by the Chinese embassy or consulate after the X1 visa application)
- Admission Letter (given back by the Chinese embassy or consulate after the X1 visa application)
- University license copy
- Passport, copies of information page, visa page and entry stamp page
- Accommodation Registration Form (receive after the police registration)
- Passport photo with bar code which will be taken at the bureau
- Health report issued by the healthcare center after the health check or report verification

Step 11 status: Finished Not finished



STEP 12: INDUCTION PROGRAMME

The induction programme at XJTLU is mandatory for all students. The program contains all the key information you need to start your study and stay in China successfully. It is also a great opportunity to meet your fellow students and meet new friends from China and all over the world

The induction programme lasting for one-week covers following activities:

- The University Opening Ceremony
- XJTLU Global Welcome Reception
- Residence Permit Application Information Session
- Academic Information Session
- Library and IT Information Session
- Campus tours
- Fresher's Fair
- Language placements tests

The opening ceremony will take place on the first weekend in September 2018 (either September 1st or 2nd), and the rest of the activities will begin on 3rd September 2018.

Students will receive a full induction programme plan when it is finalised in early August 2018.

Step 12 status: Finished Not finished

STEP 13: CHINESE BANK ACCOUNT OPENING

It is very useful to have a local bank account in China. This will save you time and money and allow you to use China's advanced e-payment technologies which make life here very convenient.

- Previously XJTLU helped student open bank accounts but new banking regulations mean that students now need to do this independently. Luckily, it is still a relatively simple and quick(ish) process. You need the following:-
- Original passport
- Chinese SIM card number
- Tax payer code
- Minimum deposit of around 10-50RMB

As to tax payer code, it could be TFN in Australia, or Tax Identification Numbers in Canada, France and Germany, Individual Numbers in Japan, INN in Russia, NRIC or FIN in Singapore, Residence Registration Number in South Korea, UTR or NINO (national insurance number) in the UK, SSN in the USA, etc.. This number might have been given by your government at your birth. If you are not sure what the number is, please check with the tax bureau governing the tax. Your own banks in your country may know.

You will receive a list of banks and addresses as well as the Chinese instructions to show the bank when you get there to open an account.



STEP 14: TUITION AND NON-TUITION FEES PAYMENT

Students are expected to pay their outstanding tuition and non-tuition fees by **9th September 2018**.

Non-Tuition fee is mandatory for all degree level students (excluding PhD) and cover the text-book fee and printing fees. The amount is 2000RMB per year and students will be refunded at the end of your one year study period if the actual cost of books and printer use is lower than the amount paid.

Exchange and Visiting students do not pay Non-tuition fee and, therefore, do not receive textbooks. All core text-books are available in the library but we suggest that you check the module specifications prior to departure in case you would like to purchase core reading in before you depart.

XJTLU Global can be approached for following support:

- Official invoice for wire transfer
- University USD or GBP bank account
- Amount of outstanding fees
- Assistance on applying to pay fees by installments (by the end of Week 2, Semester 1)
- Confirmation of tuition and non-tuition fee payment

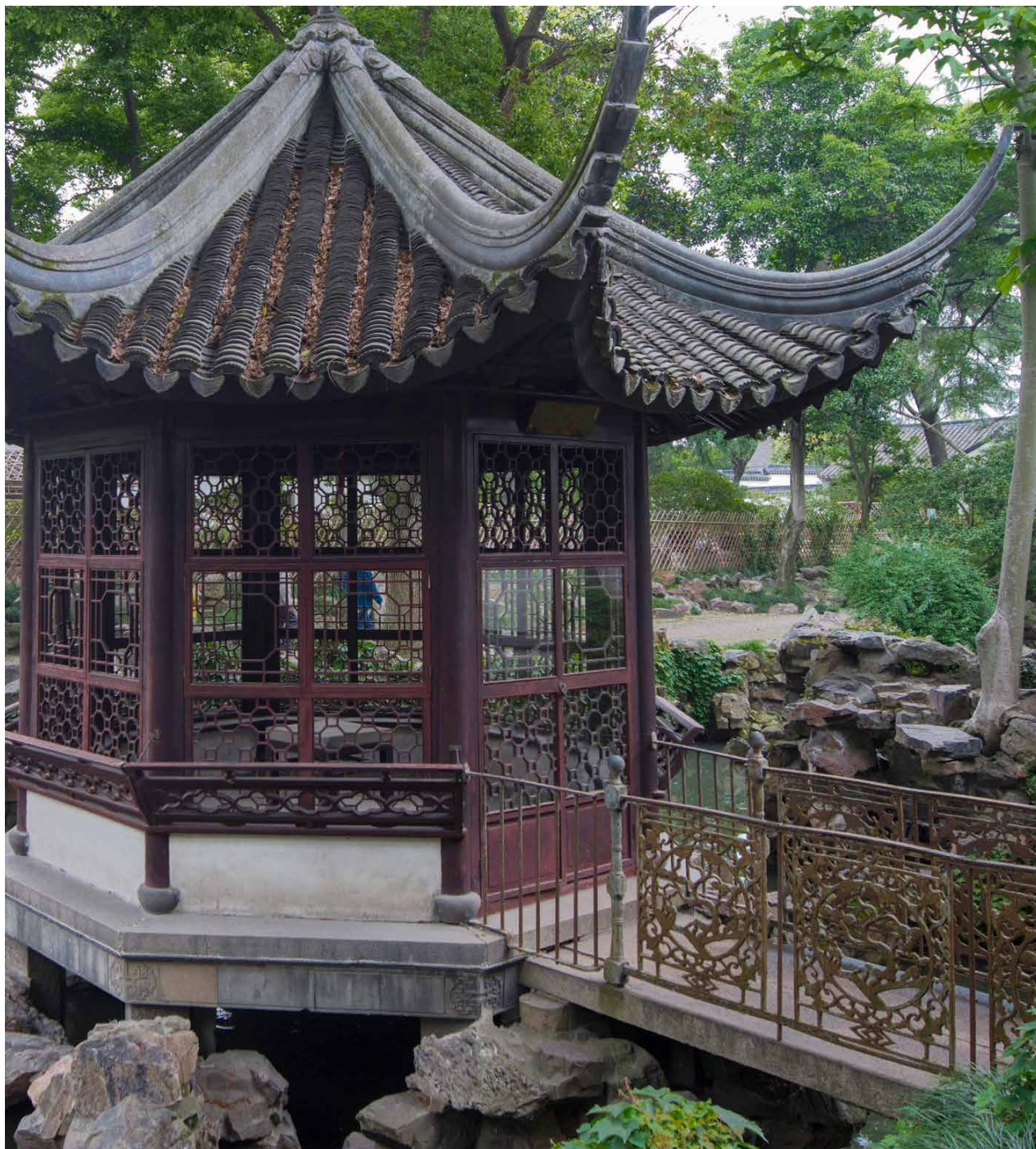
Notes for fee payment:

- The amount of the outstanding fees is a number after the deduction of the deposit which international students paid to secure their place at XJTLU and the scholarships which they might have been granted
- As a swift code might be required when wire transferring the money from your own country to Mainland China, we recommend you to transfer the money to the university bank account instead of your personal Chinese bank account
- Keep all the receipts which you will receive from the bank after paying the fees

Fee payment reminders to students who have not paid their tuition and non-tuition fees after the deadline is due.

Step 14 status: Finished Not finished





USEFUL INFORMATION FOR LIVING IN SUZHOU

There are many things to consider, pay attention to or respect when living in a different country or region, for example, laws, language and cultures, budget, health and safety, shopping and eating, communications, sports and transports, etc..

We provide you with following information aiming to help you understand what you should prepare for your lives in Suzhou and China.

LANGUAGE AND CULTURES

Take following reasons into consideration, international students are encouraged to learn Chinese language and culture.

- The Chinese Ministry of Education's requirement to learn the Chinese language and culture
- The Exit and Entry Bureau's requirement on language when applying for a residence permit to work in China (5 credits if applicants pass an HSK test)
- The possibility to have a better experience in China
- The likeliness to have a better career in the future

To fulfill these objectives, the Language Centre, the Department of China Studies and Art Education Centre provide international students with numerous language and cultural programmes, bearing or not bearing credits. Moreover, in order to provide the right level of Chinese class to students, a Chinese language placement test will take place during the induction week.

Except these programmes by centres and department, the student clubs, for instance, the International Language & Culture Association, Overseas Buddy Programme and Language Partner Union are also very helpful to enrich your experience in China. Among them, the Language Partner Union and Overseas Buddy Programme will allocate language partners and buddies to international students.

SURVIVAL CHINESE PHRASES AFTER YOUR ARRIVAL:

DAILY CONVERSATION

Hello - nǐ hǎo 你好

How are you? - nǐ hǎo ma? 你好吗?

Bye - zài jiàn 再见

Thank you - xiè xie 谢谢

Excuse me (sorry) - duì bù qǐ 对不起

Excuse me (I have a question) - qǐng wèn 请问

Where's the toilet? - Cè suǒ (WC) zài nǎ lǐ? 厕所在哪里?

How much? (money) - duō shǎo qián? 多少钱?

This - zhè ge 这个

That - nà ge 那个

Shall we go? Let's go - zǒu ba? 走吧?

I don't understand (what you said) - wǒ tīng bù dǒng 我听不懂

Can you speak English? - nǐ huì jiǎng yīng wén ma? 你会讲英文吗?

Please give me a pair of chopsticks. - - qǐng gěi wǒ yī shuāng kuài zi 请给我一双筷子

DIRECTIONS

Front - qián 前

Back - hòu 后

Left - zuǒ 左

Right - yòu 右



USING A TAXI

I can tell you the way - Wǒ kě yǐ gào sù nǐ zěn me zǒu 我可以告诉你怎么走

Keep going straight - yì zhí zǒu 一直走

Turn right - yòu guǎi 右拐

Turn left - zuǒ guǎi 左拐

Slow down - màn diǎn 慢点

BUDGET

As lifestyle differs, the cost of living in China could vary enormously. Below is a representative sample which you refer to when budgeting your living costs:

ITEMS	Student A - Resides in international halls and lives cheaply, i.e., only eating Chinese food from the university canteen, avoiding clubbing or drinking, and occasionally taking bus or metro into the old town.	Student B – Resides in international halls and lives cheaply during the week, but occasionally treats himself to food from a nicer restaurant. Goes drinking once a month. Normally takes the bus but will take three or four taxis a month.	Student C - Lives the expat life style normally eating in western restaurants and going to bars. He owns an E-Bike and takes occasional taxis
RENT	1350	1350	3000
UTILITIES	200	300	500
FOOD	800	2000	3000
TRANSPORT	50	200	300
LUXURIES	0	1000	2000
TOTAL MONTHLY	2400	5050	8800

Except these monthly costs, you should also allocate budgets to following annual costs:

- 2,000rmb/year or 1,000rmb/semester to cover non-Tuition Fee (e.g. textbooks, ID card, printing)
- Traveling costs (e.g. bus, taxi, train, flight)
- Medical costs (the insurance is indirect billing, so you are strongly recommended to prepare some money for emergent cases)
- Visa/residence permit costs (400rmb-1,000rmb, details can be found on the XJTU International Student Visa Policy)

LAWS AND POLICIES

Chinese law must be respected and obeyed by all international students who study at XJTU. Lack of knowledge of the law is not a legal defense should you run into difficulties. In general, Chinese law is in line with law in most countries globally but certain aspects may be very different from your home country. Some examples may be:-

- 1) Classification of certain illegal drugs. Cannabis and other so called ‘recreational drugs’ are regarded with a high level of severity and users may face a custodial sentence.
- 2) Visa Conditions:- Breaking visa conditions is taken seriously and may result in cancelling of your visa which may impact not only your study but your future career.

For further reading on law see these translations:-

- The Higher Education Law:
<https://wenku.baidu.com/view/54e3ab7202768e9951e738f5.html?from=search>
- The Criminal Law:
<https://wenku.baidu.com/view/86f5a587caedd3382c4d35d.html>
- The Exit & Entry Law (immigration law in China):
<https://wenku.baidu.com/view/42978893227916888486d7dc.html?from=search>

International students should also conform to university policies and we highlight the following as especially relevant to your day-to-day life:-

- International Student Visa Policy
- Student Discipline
- Student Attendance Policy



HEALTH & SAFETY

Insurances - the university provides its international students with free social and commercial insurances for international students; however, the prerequisite is students have to complete the registration on E-Bridge. The insurance works in the following way:

INSURANCE	ADVANTAGES	DISADVANTAGES
Social insurance	<ul style="list-style-type: none"> Half of the medical bills will be automatically paid by the SIP Social Security and Provident Fund Management Centre to the hospital when a social insurance card is used by students at the hospital 	<ul style="list-style-type: none"> Students can only use the social insurance card in the hospital The cap for outpatient treatment is only 600rmb/year New students can only receive their social insurance card in January after the first semester, so students are expected to pay all the bills before a social insurance card is issued to them
Commercial Insurance	<ul style="list-style-type: none"> Can compensate the rest of the medical bills which are covered by social insurance 	<ul style="list-style-type: none"> Indirect billing so students have to pay first at the hospital and then reimburse with the commercial insurance company Only hospital medical expenses can be reimbursed by the commercial insurance company

Note: more details of the university insurances will be given to new international students in the insurance information sessions by XJTLU Global Engagement Team after the semester starts.

If you have bought an insurance in your home country and it is an international package, please consult the insurance provider on following:

- What are included in the insurance package
- Whether they need original medical receipts (Chinese insurance companies will take your original documents away in most cases)
- Whether private clinics are covered (if yes, please ask them to give you a list of the clinics)
- Whether it is direct billing and what you need to do if you can see a doctor without paying anything upfront
- Whether they have an office in China (if yes, who can be your contact when you need insurance service)

HOSPITALS

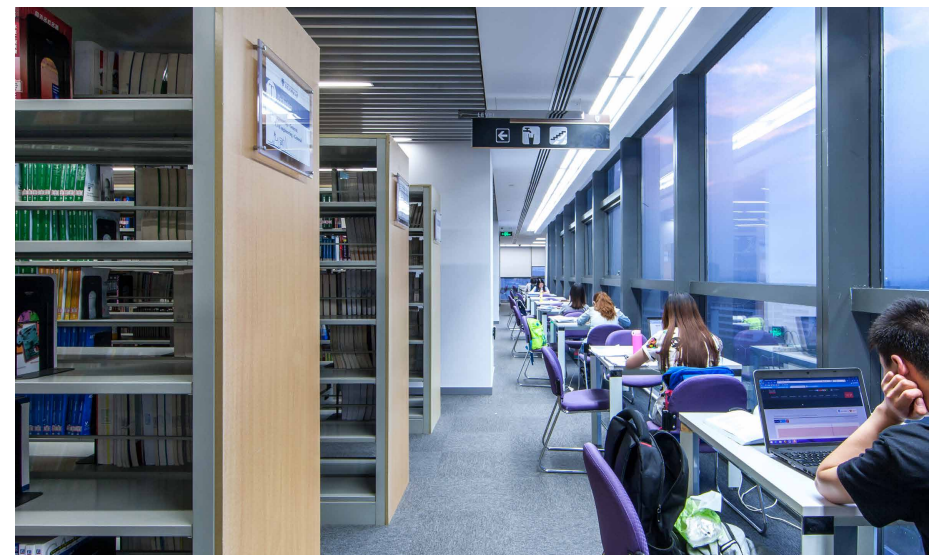
We recommend our international students, who only have the university insurances, to go to following hospitals:

NAME OF THE HOSPITAL	ADDRESS	DESCRIPTION	RECOMMENDATION
The First Affiliated Hospital of Soochow University 苏州大学附属第一医院	No. 899 Pinghai Road (苏州市平海路899号)	Probably the best public hospital in Suzhou with full medical departments	★★★★★
Kowloon Hospital 九龙医院	No.118 Wansheng Street, SIP, Suzhou (苏州市工业园区万盛街118号)	A private hospital in SIP with full medical departments. If patients who are living in SIP called an ambulance, they will be just sent to this hospital	★★★

The medical insurance provided by the university covers treatment in public hospitals and private hospital like Kowloon. The public hospitals in Suzhou are generally clean and reliable. Due to the language barrier and the different registration procedures in hospitals, we advise you to be accompanied by a Chinese speaker. If required XJTLU Global Engagement Team can arrange a member of staff or a student volunteer to assist you.

Please keep all official receipts/invoices and paperwork associated with your visit to the hospital in order to claim back your expenses either against your own insurance or the university supplied insurance.

Should you need information of any other hospitals please don't hesitate to contact the Engagement Team on global@xjtlu.edu.cn after you arrive in China.



PRIVATE CLINICS

Benefits of using a private clinic can be: a more foreigner friendly environment, services generally offered by foreign doctors or those who have a high standard of English, and entirely western medicine based treatment.

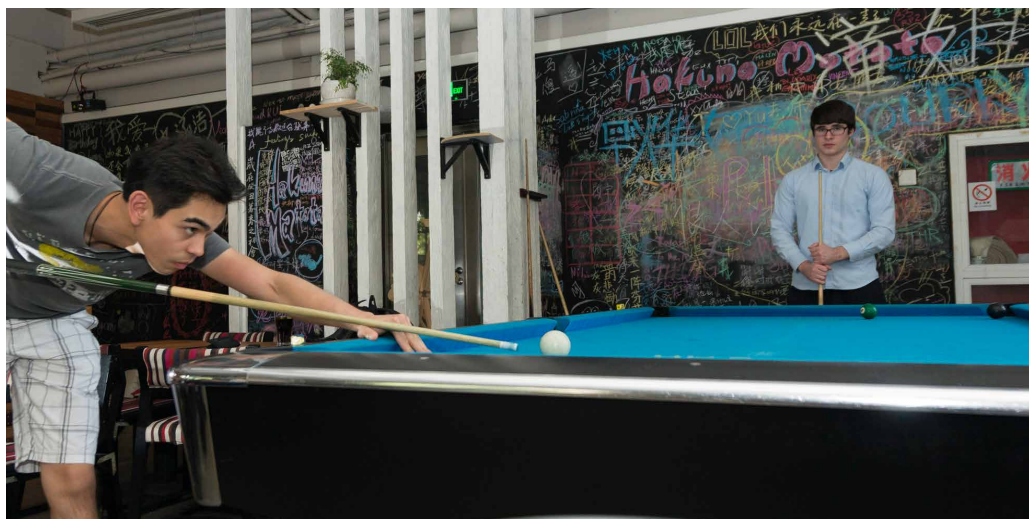
If your own insurance covers private clinics or you expect better services, Sing Health and Parkway could be the options. Their information can be found on their website: <http://www.singhealth.asia/en/index.php> and <http://www.parkwayhealth.cn>.

STUDENT COUNSELLING

Working in conjunction with the Mental Health and Development Centre (MHDC) at XJTLU alongside external health care facilities, ISRS aims to support and respond to students' emotional needs and general wellbeing. Living in a different country can be exciting and yet stressful from time to time. All factors such as the language barrier, culture difference, food or climate can affect you emotionally. Although we know that many students will have minimal problem adapting to the new environment, we are here to support you should you be finding it difficult so that you can get the most from your time at University. If you wish to talk to someone about any concerns you might have, don't hesitate to contact us. All enquiries of this nature will be kept confidential.

Safety tips:

- Always lock the door and windows of your bedroom when you leave your room
- Only carry a copy of your passport instead of the original passport when you are not travelling outside Suzhou
- Call the police on 110 immediately when you lose valuable things, are attacked or robbed, etc. (the police case report is very important for further process)
- Only carry small amount of cash with you
- Call the police on 110 immediately when you lose valuable things, are attacked or robbed, etc. (the police case report is very important for further process)
- Don't put money in your luggage when you are travelling
- Don't leave your belongings unattended in classroom, especially under the examination conditions
- Don't leave your electronic devices attended in your apartment as they may cause fires
- Don't go to dangerous places, for example, clubs with gangsters



SHOPPING AND EATING

Suzhou Industrial Park has a lots of shopping malls or plazas where you can buy your clothing and cosmetics, watch movies, treat yourselves with diversified foods and coffee, and so on. Here are some recommendations:

SUZHOU CENTRE (苏州中心)

Newly opened shopping centre in the West of SIP with horse riding space, snow and ski skating, clothing shops, restaurants, etc.. Take Metro Line 1 and get off at the station of Oriental Gate.

TIMES SQUARE (时代广场)

It is a massive commercial area with hundreds of shopping malls, restaurants, entertainment amenities and cafés, for example, Elite Bookstore, Jiuguang Shopping Mall, Shin Kong Place, branches of Watson's, Manning's, Subway, Starbucks and other restaurants.

Bus route 115, 快线2号 to '旺墩路'stop and about 10 minutes' walk. Or Metro Line 1 to get off at Time Square Station.

XINDU PLAZA (馨都广场)

Western restaurants include Heidi's, Jack's, Simon's and Mister Pizza. Other popular restaurants such as Casa Zoe and Blue Marline are located a short walk away.

Bus route 146, 178 to '馨都广场'stop

LI GONG DI (李公堤)

Li Gong Di is located along the southeast bank of Jinji Lake (金鸡湖). It provides a wider variety of bars and restaurants. It becomes especially lively during the weekends. For those who prefer a more sedate environment, restaurants such as Indian at the Cross, Namaste, Amigos, Hofbräuhaus and the all you can eat and drink Japanese restaurant Zhao Ri Wu (朝日屋). Li Gong Di also plays host to several popular bars including Ollies', Harry's, Tunnel bar and Jenny's.

Bus route 142 to '李公堤南'stop

MOON HARBOR (月光码头)

Western food and bars. Popular restaurants include Ganesh Indian and Ophelie. Bus route 812, 快线2号 to '国际博览中心'stop and 10 minutes' walk

INCITY AND WAL-MART (印象城)

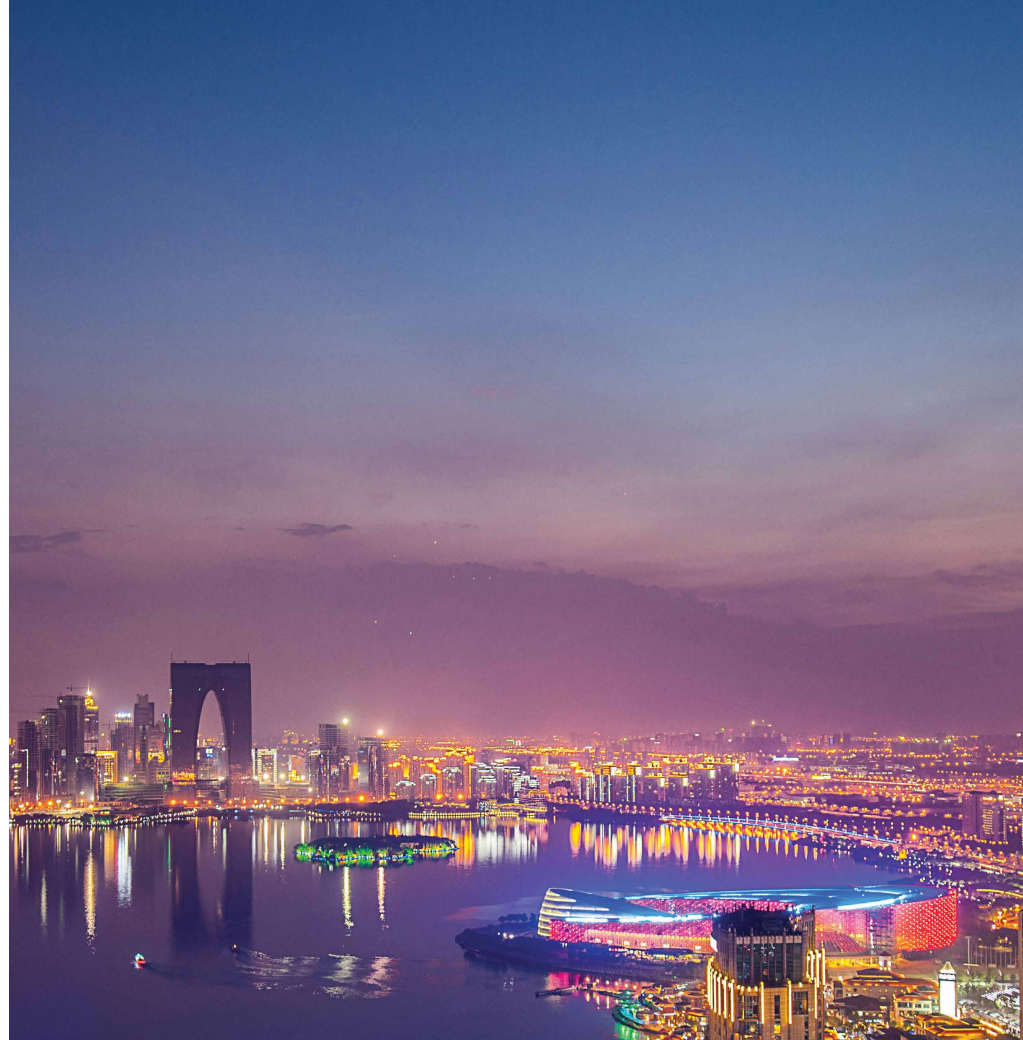
Fashionable shopping mall (Uniqlo, Muji, H&M, ZARA, Subway and Starbucks, restaurants and cinema). Wal-Mart (in basement) has some imported goods and a range of household good.

Bus route 120, 238, 261, 2 to '东港二村东' and about 5 minutes' walk; Metro line 1, Central Park stop, outside exit 1, there is a free mini bus which will take you to InCity directly, it runs every 10 minutes approximately.

VALUE RETAIL SUZHOU VILLAGE (苏州奕欧来)

Shopping area for discounted luxury brands

Can take their free shuttle bus to go there. The collection point is Hyatt Hotel. You can wait to be picked up at Exit No. 3 of Metro Line 1 on Huachi Street in Time Square.



AUCHAN SHOPPING CENTRE (欧尚)

An enormous supermarket with a reasonable selection of Western products. The shopping Centre within Auchan also has a variety of other shops including Decathlon (sports and outdoor shop).

Opens from 8am - 10pm

Auchan on West of SIP: Bus route 142, 812, 146 to L'Oreal, Ou Shang (欧莱雅, 欧尚)

Auchan on East of SIP: Bus route 110, 208 to Duhun East Road (敦煌路东站)

You may also find a variety of food and restaurants in Suzhou, for example, traditional restaurants on streets such as Guanqian Street (观前街), Shiquan Street (十全街) and Shilu (石路) shopping area in the old town.

ON-CAMPUS FACILITIES

CHEAP ¥

AVERAGE OR ABOVE ¥¥

SUBWAY (赛百味) ¥¥

Located on the ground floor of the Foundation Building
Opens from 8am - 10pm (Monday - Sunday)
Sells sandwiches, biscuits, hot and cold drinks

KEDI CONVENIENCE STORE (可的) ¥

Located on the ground floor of the Foundation Building
Opens from 8am - 9pm (Monday - Sunday)
Sells snacks, drinks, daily necessities

PARFAIT (芭菲) ¥¥

Located on the basement floor in Science building (Block SA)
Opens from 10am - 6:30pm (Monday - Sunday)
Serves both Chinese and Western-style food

YUSHANFANG (御膳房) ¥

Located on the ground floor in Building P122
Opens during 7am - 9am (breakfast), 10:45 - 13:30 (lunch), 4:30pm - 7pm (dinner);
(Monday - Sunday)
Serves Chinese-style food
Note: Opening hours may sometimes change during national holidays or University closing days, please look out for notices or check with them directly.

OFF-CAMPUS FACILITIES

There are also lots of other restaurants (Chinese and international), convenience stores, and supermarkets in the Dushu Lake Science and Education Innovation District, which are also close to the campus.

HAKUNA MATATA CAFÉ & BAR ¥¥

5 minutes' walk from the University Foundation Building
Opens during 8:30am - midnight
Offers coffee and other beverages, western dishes

ZEMO CAFÉ 这美咖啡 ¥¥

5 minutes' walk from the University Foundation Building, next to Hakuna Matata
Opens during 8:00 - 9:00
Offers coffee, breakfast and other beverages, western dishes

HANLIN NEIGHBORHOOD CENTRE (翰林邻里中心)

Fresh Market, dry cleaners, McDonald's, Vanguard Supermarket, bakery, yoga studio, photographers, and Victor's imported goods. Basil's Café (Ti'amo) around the corner of the Centre offers a variety of western food.
Location: at the end of Ren'ai Road. A fruit, vegetable and meat market is behind McDonald's just up the side street.

WENCUI PLAZA (文萃广场)

It is opposite the north gate of Parfait International Apartment, where you can find Starbucks Coffee, Family Mart, City Life Shop, hotels and numerous restaurants providing all kinds of foods in walking distance.

WEN XING PLAZA (文星广场)

A Chinese supermarket (basement) provides daily necessities, small selection of fruit, no vegetables or meat. The complex also has KFC and the train ticket office. There are also a number of Chinese restaurants around the area, a bakery (85°C), ABC bank ATM machines and a pharmacy. The MBA Hotel Apartment is also close to the plaza.
Location: Opposite the University



EATING CULTURE

Food lies at the heart of Chinese culture. So much so that one of the most common greetings is “吃饭了吗 (Chi fan le ma)” which means “have you eaten” and roughly equates to “how are you”. It shouldn't be taken as an invitation to eat.

Restaurants in China can be divided into two main types, traditional and snacking (小吃). In a traditional restaurant, you will order dishes which will be placed in the middle for everyone to share. Portion sizes vary dramatically, but a good rule to order dishes is: each dish for each people + 2 extra dishes + 1 optional soup. These dishes are divided into cold dishes, meat/fish dishes, vegetable dishes and soups.

Recommended simple meal for two people: Peanuts花生米, Egg and tomato番茄炒蛋, 'Fish' flavoured meat鱼香肉丝, Stir-fried greens青菜. This may cost 35-60 RMB.

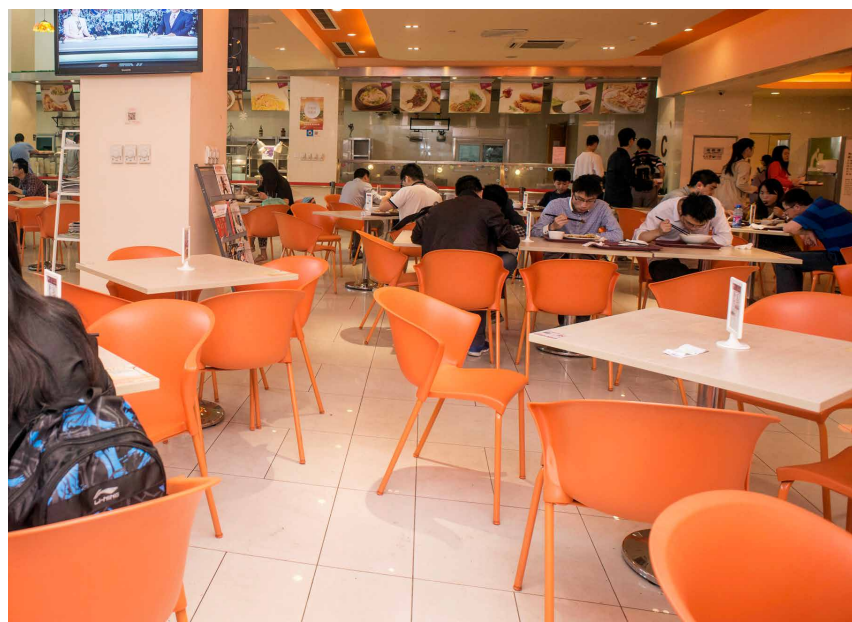
LOCAL CUISINE

Hot pot is to the Chinese family what Sunday dinner is to the British. You start by ordering a soup which you then use to cook meat and vegetable.

What to put in the pot?

Meat - Lamb羊肉, Beef牛肉, Nice pork五花肉
Vegetables - Potatoes土豆, Sweet potatoes红薯, Carrots胡萝卜, Spinach菠菜, Mushrooms蘑菇 (香菇, 平菇, 金针菇)

If you just want to go out to eat on your own or want to eat something a little simpler there are a variety of smaller restaurants to choose from. These can be roughly divided into rice 米饭, noodles 面 and wontons 馄饨.



SPECIALIZED DIETS

HALAL

All Chinese cities have Halal restaurants mostly established by Hui Muslims. Traditionally the north west of China was predominately a Muslim region of Chinese Muslim converts and people of Turkic descent who had settled on the Silk Road trading routes. Hui and Uyghur cuisine are now popular all around China and most customers are not Muslims. Halal is relatively well understood and respected due to this long historical presence of Muslims in China. Halal products and restaurants normally display a Halal (清真) certification:

I am a Muslim- I do not eat pork. 我是穆斯林, 我不吃猪肉。



Typical dishes sold in Halal eateries are:

Lanzhou Beef Noodles 兰州拉面
Xinjiang Roast Lamb 新疆烤羊肉串儿
Xinjiang Saute Spicy Chicken 新疆大盘鸡

VEGETARIAN / FOOD ALLERGIES/ GLUTEN FREE

The concept of being vegetarian is not well understood outside of big cities and popular tourist destinations, whilst allergies are almost unheard of. Therefore, vegetarians and those with peanut and shellfish allergies need to be very careful when eating out in China. If shortage of some highly seasonal fruits and vegetables does not bother you, access to a wide variety of fruits and vegetables in supermarkets, wet markets in communities or even roadside stalls will certainly meet your self-catering demand. When going out to eat you need to be vigilant and make sure that the food you have ordered is ok for you. Many restaurants have picture menus to show you exactly what is in the dish you are ordering. Be aware that shellfish and peanuts are used as flavouring in various dishes and that the server may not even consider their presence. Those with severe peanut allergies need to be really careful as a popular cooking oil is made from peanuts.

Safe bets: Stir fried green/炒青菜 (Chao Qing Cai), Egg and tomato/番茄炒蛋 (Fanqie Chao Dan)

I don't want any meat, just give me vegetables/我不要肉, 只要蔬菜。(Wo bu yao rou, zhi yao shucai)

Watch out for steamed bun (包子, Bao Zi), veggie ones often have meat in them
Yuxiang Qiezi- 'fish' flavoured aubergine (eggplant) very tasty but often has meat in it too.

I'm allergic to shellfish, I can't even eat a tiny bit of shellfish/我对海鲜过敏, 一点点海鲜都不能吃。(Wo dui haixian guomin, yi dian dian haixian dou bu neng chi)

Watch out for very tiny prawns (虾米, Xia Mi) that are often used for flavouring.
I'm allergic to peanuts, I can't eat peanuts or peanut oil, or anything made of peanuts/我对花生过敏, 花生米, 花生油等都吃不了。(Wo dui huasheng guomin, huashengmi, huashengyou deng dou chi bu liao)

COMMUNICATIONS

SIM CARD FOR TELECOMMUNICATIONS

China Mobile, China Telecom and China Unicom are the three major telecommunication providers in China. Their stores in Dushu Lake Science and Education Innovation District provide students with student packages, which are normally cheap. If you want to purchase a SIM card, please visit their stores at following addresses:



CHINA MOBILE:

Wenxing Plaza (opposite Xi'an Jiaotong - Liverpool International Conference Centre on Ren'ai Road)

MONTHLY FEE	MONTHLY DATA		MONTHLY INTERNET/WLAN		
80 RMB	In China	In Jiangsu	360h (50M)		
	1GB	1GB			
40 RMB	1GB	180h (50M)			
MONTHLY FEE	SERVICES FOR FREE				
80 RMB	Internet use		Free calling		WLAN
	20G*6 months	2G*24 months (22:00-8:00)	500 minutes with XJTLU students	600 minutes in Suzhou	250h*24months
40 RMB	2G*24 months (22:00-8:00)	500 minutes with XJTLU students	600 minutes in Suzhou	250h*24months	

CHINA TELECOM:

- Neighborhood Centre, 608 Linqun Street (at the east end of Ren'ai Road)
- Wencui Plaza, 8 Xuetang Street (close to Parfait International Apartment, Parfait Hotel & Apartment)

MONTHLY FEE	FREE CALLING	FREE INTERENT	FREE TEXTS	FREE WLAN
31RMB	533min	13GB	100 texts/month	200h (50M)
61RMB	866min	17GB	100 texts	No limit (100M)

CHINA UNICOM:

the Service Centre at Wenxing Plaza Walking Street (opposite Xi'an Jiaotong - Liverpool International Conference Centre on Ren'ai Road)

MONTHLY FEE	MONTHLY		SERVICES FOR FREE			
36RMB/month	In China	In Jiangsu	Free calling	Internet use (22:00-8:00)	Internet use (in Suzhou)	Internet use (in Jiangsu)
	0.5GB	1GB	100 mintues *10 months	2GB*10months	5GB*3months	10GB*3months

NOTE:

the price of their packages is subject to change, so please consult the providers directly for updated information.

You will benefit from using a smart phone in china not just because of the 4G data provided by the three telecommunication providers but also the widely accessible WIFI in many places including the entire campus of XJTLU. Please be aware that some phone companies lock your handset to their service, in order to use your phone abroad you will need to get them to unlock it.

SOCIAL MEDIA

Your stay in China can be made much easier through the use of apps. Two apps that you will find useful are Pleco and WeChat.

PLECO

is an online English to Chinese dictionary which is available in all app stores. You may need to activate the Chinese handwriting keyboard on your phone before you draw Chinese characters or type pinyin into the app to search the meanings of the words. You can also ask a Chinese person to type a whole question into the app and then read the word by word translation. Please be aware that the English to Chinese translation function also works word by word.

WECHAT (微信)

is the most commonly used social media APP in China. This APP allows users to do video and voice calls, messaging, online payment, top ups for phone, moments, etc..

XJTLU GLOBAL WECHAT QR CODE



To use the Wechat Wallet to pay bills electronically, you need to associate one of your CHINESE bank accounts with your Wechat account by Click “Me”→“Wallet”→“Cards” (like you do it for PayPal).

When Wechat Wallet is set up, you can pay electronically in the following steps:

- Click “+”→“Scan QR Code” →“Scan vendor’s QR Code” →“Enter Amount” →“Enter Password”
- Or switch to the page of “Me”→“Wallet”→“Quick Pay”→“Show the Cashier”

DIDI CHUXING

is a Chinese version of Uber. Users can use this APP in English to get a taxi or a private car registered with the company. As to payment, this APP allows users to pay through WeChat Wallet or Alipay, so it really can facilitate your transport.

AIR MATTERS

to check the air quality and weather, and receive advice on how to protect yourselves.

BON APP

to find information of restaurants, including comments on the food served and special offers.

OTHER USEFUL LINKS:

<https://www.facebook.com/groups/suzhouexpats/>
<https://www.facebook.com/ShanghaiExpat/>
www.smartshanghai.com/

There are many other useful apps or links, check with your classmates!



TRANSPORT

Suzhou has a very well developed public transport system with buses, metro and taxis available throughout the city. This system enables people to get around the city easily.

BUS

Buses - cost 1-2RMB (occasionally some routes which extend to the very suburb of the city may cost 4-5RMB/trip)

METRO

It is one of the most popular transport options in Suzhou, currently Line one and Line two are operating. Please read appendices for details.

TAXI

They are relatively affordable in Suzhou. All legal cabs with the sign of Taxi on the top are using meters, so if the driver didn't start the meter after the service starts, you should alert him to turn on the meter (打, Dabiao). There are two types of legal taxi.

Black cabs cost bit more, normally 14RMB as the starting charge to cover the first 3 kilometers, and then 2.30 RMB/KM.



Other coloured cabs are cheaper and can be hailed in the street. Free cabs will have a green “空车” on the top, if the car has a red “有客” it means the cab is occupied.

When taking a taxi, unless you are confident to tell the place name clearly and accurately, you are suggested to have the address of the place written down in Chinese characters. It's also a good idea to have your home address on you when you go out so that you can make your way home should you get lost.

BICYCLE

If you enjoy the autonomy of getting around, a bicycle can be a good option. The quality bicycles can be found in supermarkets, shopping malls or some professional stores of a specific brand. Considering the road and traffic conditions, you are advised to wear protection gears such as the helmet, gloves and so on.

E-BIKES

Considering the quality of most E-bikes and the risk to your lives, we don't encourage our international students to buy and use E-bikes for transportation. Fatal E-bike crashes are too common in Suzhou to even merit a mention in the local papers. However, if you decided to ride an E-bike, you are required by the law to register in the local police station in order to obtain the riding license and get your E-bike plated. Meanwhile, we strongly advise you to be careful, wearing a good quality helmet and ensuring that you are aware of the stopping distances of your bike (E-bikes often have very good acceleration and equally poor braking systems).

NOTES:

Use of illegal buses and cabs: ignore any illegal buses and cabs which you may come across at the train or bus station. As these vehicles are not legally registered with the traffic management bureau, you might just put your life in danger, be deprived of the right to reimburse the medical expenses with the insurance providers if you are injured in an accident, or lose a lot of money since the driver tends to use fake bank notes. Please remember that you can always find the licensed cabs or buses at a certain spot by using the signage at the train or bus station.

Illegal motorcycles: without permission motorcycles are prohibited in Suzhou, so you won't be able to obtain a driving license or get the motorcycle plated. Therefore, for the sake of your own and the others' security, we strongly advise you not to buy and use any motorcycle. Moreover, an accident caused by illegal use of motorcycles, no matter how severe it is, will lead to a rejection of your request to reimburse your medical expenses with any insurance company in China.

Driving license: foreign driving licenses are not recognised in China, so it is illegal to drive a car without a Chinese license.

TRAVELLING IN CHINA

China has an exceptionally well developed transport network, meaning that should you wish to you can travel throughout an enormous China, both in terms of its land and population, with relative ease.

PLANE

We recommend you to use following websites to book your air tickets to get around in China:

Ctrip.com - has an English language version, but at time of writing the website was only accepting Chinese credit cards.

Qunar.com - this website is entirely Chinese but has the best deals for flights.

The best way to book flights is to ask a Chinese friend to book them online for you. They will need to write your name using the following format SURNAME/FirstnameSecondname.

TRAIN

China has an extensive network of trains with high speed rail links running throughout the east coast with continual development into western regions.

High speed rail trains: train number starts with either G or D offering two classes of seating, first and second.

Z, K, L or in numbered: older and slower trains, normally selling three classes of tickets, hard seat, hard bed and soft bed. Please be noted that the train tickets can only be booked a maximum of 18 days in advance.

It's a good idea to buy your tickets as early as possible as tickets are often sold out. The closet ticket centre is in student canteen at Wenxing Plaza on Ren'ai Road.

COACH

Coaches are a little more expensive than trains, but are useful for getting to smaller cities or out of city tourist locations. As coach tickets only go on sale approximately 18 hours before departure, they can also be used as emergency transport when trains are fully booked.

There is no easy way to book tickets online and finding a timetable is similarly tricky. Your best bet is to go to the coach station 汽车站/客运站 and ask at the ticket office there.



RELIGION 宗教

According to the Chinese law, religious rites and activities can only take place in officially recognized places of worship, i.e. churches, mosques, temples, etc. However, all major world faiths have Chinese followers with the number of Muslims and Christians in Chinese growing rapidly in recent years.

TAIPINGFANG MOSQUE (太平坊清真寺)

Add: No. 19 Tai Ping Fang, Shilu, Suzhou (苏州石路太平坊19号)

DUSHU LAKE CHRISTIAN CHURCH (独墅湖基督教堂)

Add: Bailu Park, Dushu Lake HET, SIP (苏州工业园区独墅湖翠微街白鹭公园)

Bus route 156, 166, 176, 218

Website: <https://www.thesif.org/>

OUR LADY OF THE SEVEN SORROWS (CATHOLIC CATHEDRAL) 圣母七苦主教座堂

Add: No.90 Sanxiang Road, Suzhou (苏州市三香路90号)

There are two main Taoist temples in Suzhou, one at 94 Gangqian Street (观前街) known as Shuzhou Xuanmiao Temple (玄妙观) and another at 94 Jingde Road (景德路) known as Suzhou Chenghuang Temple (城隍庙)

HANSHAN TEMPLE 寒山寺

Website: <http://loading.hanshansi.org/index.html> (in Chinese)

Add: No.24 Hanshan Temple Lane, Jinchang District, Suzhou 苏州市金阊区寒山寺弄24号

Bus route 游3, 313, 6, 9, 17, 21, 31, 301 to '何山大桥' stop

HOLIDAYS

MID-AUTUMN FESTIVAL

The Mid-Autumn Festival means family reunion to Chinese people, thus it is one of the most important traditional festivals. There are many beautiful legends about the origin of this festival. Admiring the full moon and eating moon cakes are the traditional activities held on this day.

NATIONAL DAY

It is a festival of great importance to the people nationwide and to celebrate the funding of the People's Republic of China in 1949.

CHRISTMAS

This is a Christian festival which is increasingly celebrated in China.

SPRING FESTIVAL

Being one of the traditional Chinese festivals, it is the grandest and most important festival for Chinese people. It is also the time for the whole families to get together, similar with Christmas Day in western culture.

QINGMING FESTIVAL

It is a day when people eat rice cakes and sweep the tombs of their ancestors.

DRAGON BOAT FESTIVAL

People traditionally eat zongzi (粽子), a rice dumpling wrapped in bamboo or red leaves and watch dragon boat race.



INFORMATION TO SUBMIT TO XJTLU GLOBAL AFTER YOUR ARRIVAL

Please submit the form to XJTLU Global Engagement Team at Central Building - 115E after you complete it.

Surname: Given name:
Gender: Birthdate:
Programme: Year of Study:
Student ID No.:

Passport No.: Visa type:
Visa No.: Arrival date: Visa expiry date:
Residence permit application: Required Not required

Accommodation:
Chinese mobile phone no. :
Emergency contact person:
Emergency contact no. :
Emergency contact email:

NOTES:
emergency contact information must not be your own contact information.

LOCATION OF OFFICES

XJTLU Global: CB-108E

Student One-Stop office: CB-115E

Student Activity Office: CB-256

Registry (Academic Affairs): CB 8F

IT Service Desk: CB 9F

Finance Office: CB 10F

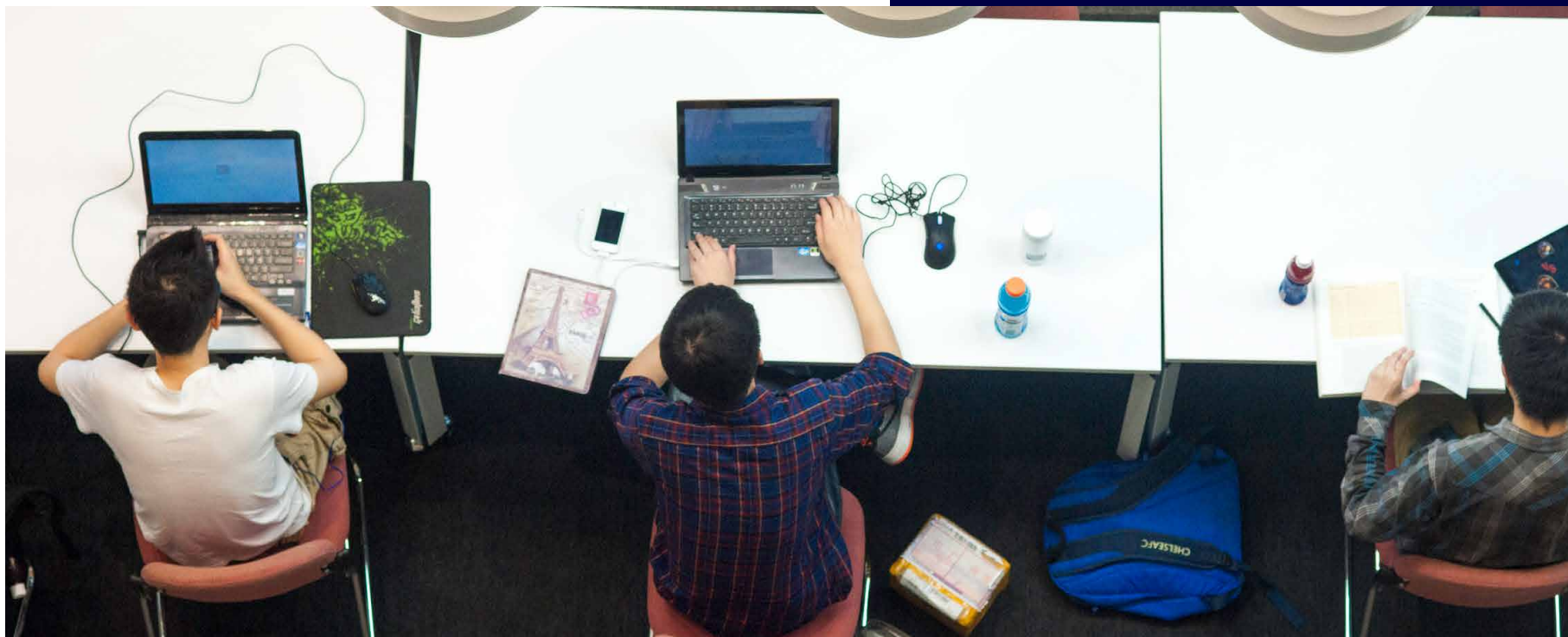
Graduate Student Office: CB-858

Library: Level 1-8, Central Building

Career Office: CB-102E

Student Counseling Office: CB-285

Gym: CB-G13





Xi'an Jiaotong-Liverpool University

西交利物浦大学

XJTLU GLOBAL

Office 108E, Central Building

Xi'an Jiaotong-Liverpool University

111 Ren'ai Road, Suzhou Dushu Lake Science and Education

Innovation District, Suzhou Industrial Park, Jiangsu Province,

P. R. China, 215123

西交利物浦大学

西浦国际, 中心楼108E室

中国江苏苏州工业园区独墅湖高教区仁爱路111号, 215123

International Student Engagement team:

Tel: +86 512 8816 1661/8816 1807/8818 8316

Monday - Friday 10am - 4pm

Email: Global@xjtlu.edu.cn

