



GUIDEBOOK

XJTLU | ENTREPRENEUR COLLEGE (TAICANG)
(西浦创业家学院 (太仓))

XJTLU | ENTREPRENEUR COLLEGE (TAICANG)
西浦创业家学院 (太仓)

校园指南



CONTENTS

01

BRIEFING

P01

02

TAICANG AT A GLIMPSE

P02/08

03

XJTLU IN TAICANG

P09/17

04

CAMPUS MAP

P18/19

05

ACADEMIC SPACE

P20/26

06

RESIDENTIAL AREA

P27/29

07

SYNTEGRATIVE
SERVICES PLATFORM

P30

08

PUBLIC SERVICES

P31/35

09

CONTACT US

P37

01

BRIEFING

引言

未来
2018.03.26
融合
2019
04.01
共生
2022.09
创新

As an educational explorer and reshaper, Xi'an Jiaotong-Liverpool University takes international specialised elites and international industry elites as its education goals in response to future social development trends and needs. On the basis of continuing to deepen and improve the existing education model of XJTLU SIP Campus, XJTLU Entrepreneur College (Taicang) will cultivate international industry elites with Syntegrative Education model.

On 26 March 2018, the Taicang Municipal People's Government and XJTLU signed a framework agreement for collaboration. On 1 April 2019, the first land was obtained. On 29 April 2019, the construction started. The campus is expected to open in September 2022.

This guidebook is intended to provide information on various aspects of the new campus and life in Taicang for all staff, students, partners and friends who follow us with interest and enthusiasm.

Welcome to XJTLU Entrepreneur College (Taicang)!



02

TAICANG AT A GLIMPSE 太仓一览



GEOGRAPHICAL POSITION 地理位置

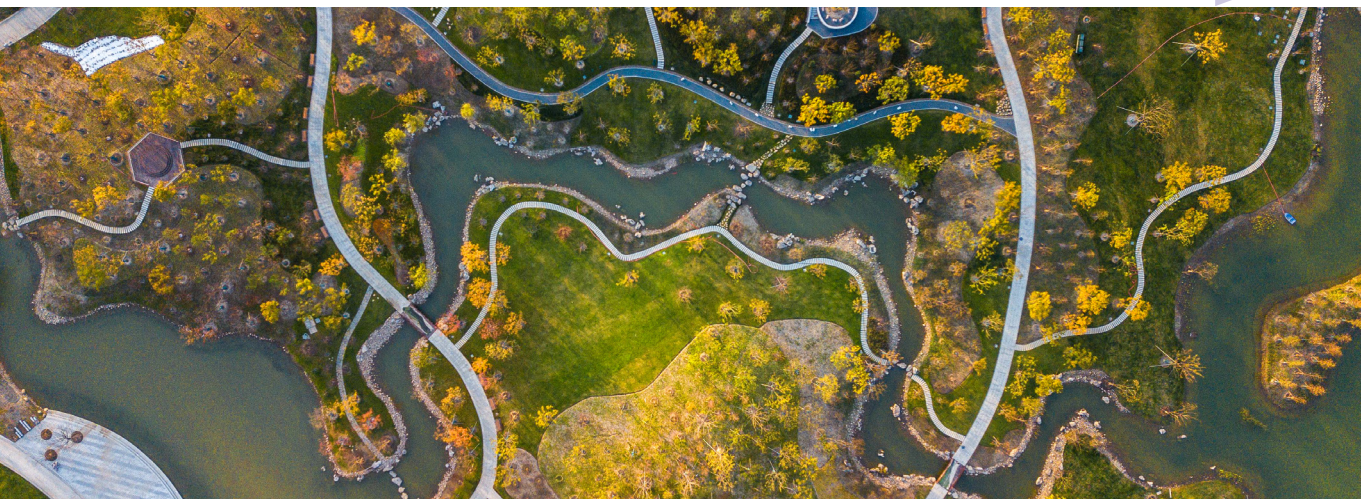
Taicang is a county-level city under the jurisdiction of Suzhou, in Jiangsu Province. Located along the Yangtze River, northwest of Shanghai, Taicang is adjacent to Baoshan District and Jiading District of Shanghai in the south, Kunshan City in the west, and Changshu City in the north, and benefits from a superior geographical position, and solid economic foundation, as well as a superb living environment.





HISTORY AND CULTURE 历史文化

Highlighted with a history of more than 4,500 years, Taicang has been an important seaport of great commercial importance, and is known as the "Six Kingdoms Wharf" since Yuan and Ming Dynasties, and is also the starting point of the famous navigator of the Ming Dynasty-Zheng He's voyages to the West. Taicang was also called Loudong in ancient times for its geographic location of being in the east of Loujiang River. It is also the birthplace of Jiangnan Sizhu and Loudong culture.



ECONOMIC DEVELOPMENT 经济发展

Taicang, consistently ranked among China's top 100 counties and widely regarded as one of Jiangsu Province's most economically promising county-level cities, continues to demonstrate strong growth.

The city has deepened industrial innovation collaboration, fostering a "3+3" industrial cluster system:

- Its core industries – Advanced Equipment Manufacturing, Advanced Materials, and Modern Logistics & Trade – have each surpassed the ¥100 billion scale.

- Emerging sectors – Biomedicine, Aerospace, and Cultural Tourism – are experiencing accelerated development.

In 2024, Taicang achieved:

- A Gross Domestic Product (GDP) of ¥188.006 billion.

- GDP growth of 6.8% year-on-year (at comparable prices).

Sectoral Breakdown:

- Primary sector (Agriculture, etc.): ¥2.463 billion (growth: 3.3%)

- Secondary sector (Industry): ¥85.252 billion (growth: 6.2%)

- Tertiary sector (Services): ¥100.291 billion (growth: 7.3%)

GDP Composition: 1.3% : 45.4% : 53.3% (Primary : Secondary : Tertiary)

GDP per capita (based on resident population) reached ¥221,800.



HOMETOWN OF GERMAN ENTERPRISES

Taicang, renowned as the "Home of German Companies" (德企之乡), has attracted a significant cluster of internationally recognised German enterprises. Notable examples include: Schaeffler (舍弗勒), BorgWarner (博格华纳), Brose (博泽)

The city hosts more than 550 German companies. Taicang's German manufacturing firms account for over 10% of the nationwide total of such enterprises.



AVIATION AND AEROSPACE

Focusing on the construction of a modern industrial system and the goal of innovative economic development, the Taicang Municipal People's Government has accelerated the planning of leading aerospace industries. Three functional parks, namely Aerospace Parts Industrial Park, Aerospace New Materials Innovation Park and Loujiang Aerospace Industrial Park, have been completed successfully.



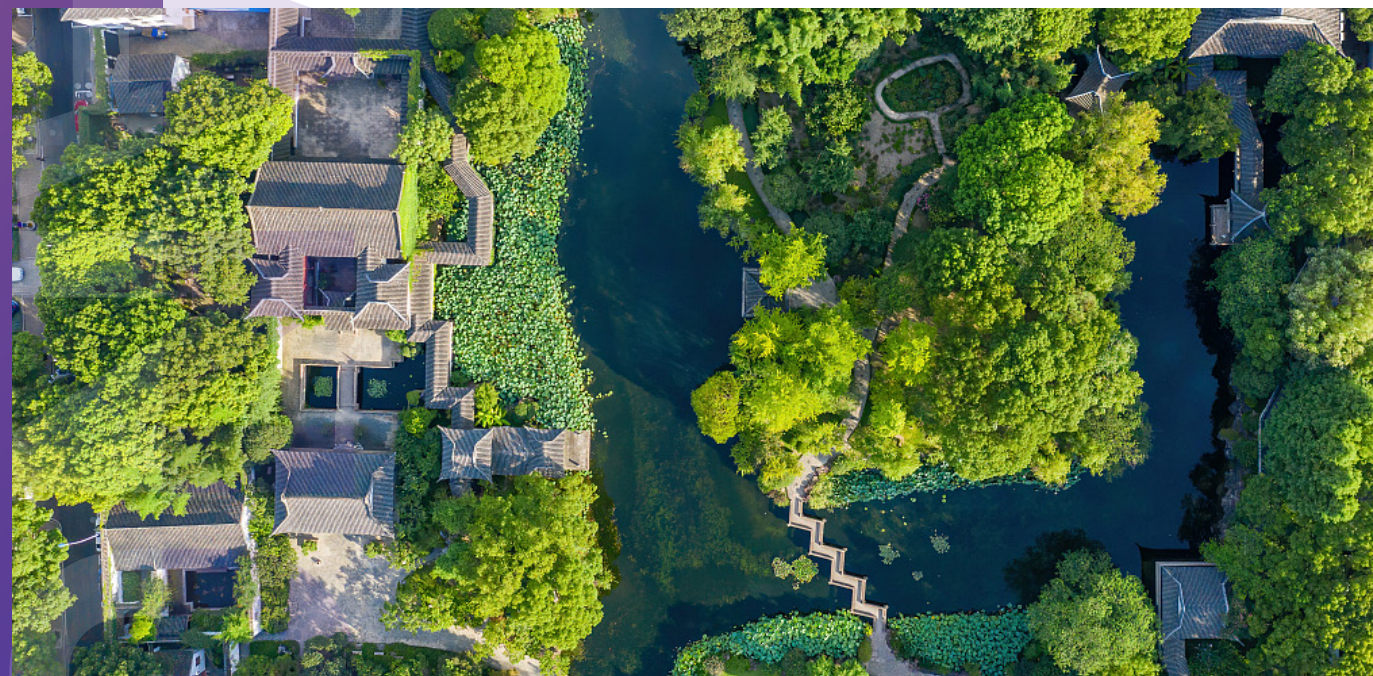
BIOMEDICINE

After years of development, Taicang's biopharmaceutical industry has formed a mature ecosystem dominated by the Biomedical Industrial Park and supported by Bioport and Sino-Germany Life Science Park. At present, more than 300 biopharmaceutical enterprises gather in Taicang, specialising in three sectors of biopharmaceuticals, medical devices and medical service outsourcing.



ENVIRONMENT 生活环境

As a modern garden city, Taicang boasts a greenery coverage ratio of 42.2%, providing residents with a variety of parks and green lands, represented by Jincang Lake Park and Shaxi Ancient Town.





LOUJIANG NEW TOWN 娄江新城

XJTLU Entrepreneur College (Taicang) sets in Loujiang New Town, which, with an area of 48.9 square kilometers, is located south to Jiading District, Shanghai, at the conjunction of Shanghai-Nantong Railway and Southern Jiangsu High Speed Railway. The preliminary planning of Loujiang New Town consists of "one centre, two axes, three hubs and four districts", of which the centre is the eastern sub-centre of Taicang; two axes are the Baiyundu Road Ronghu Axis and the College Road Science and Technology Innovation Axis; three hubs are the business hub, the science and education hub and the residents hub; and four districts are the Linhu International Community, the Science and Education Innovation District, the High-speed Railway Business District, and the High-tech Intelligent Manufacturing District.

Loujiang New Town is bond to become the gateway of Taicang to Shanghai, and serves as an important hub connecting neighboring cities, and also the frontier for the future development.



03

XJTLU IN TAICANG 西浦在太仓



XJTLU ENTREPRENEUR
COLLEGE (TAICANG)



XJTLU ENTREPRENEUR COLLEGE (TAICANG) 西浦创业家学院（太仓）

XJTLU Entrepreneur College (Taicang) is a new strategic step taken by XJTLU to explore the cultivation of future talents who meet the social needs in the era of Industry 4.0. It is themed with Syntegration and Symbiosis and combines general, disciplinary and industry-based entrepreneurship education with management and leadership education, to cultivate international syntegrative elites and industrial leaders who can stand on the shoulders of artificial intelligence and robots.

XJTLU Entrepreneur College (Taicang) campus is located at Loujiang New Town adjacent to Jiading District, Shanghai. It provides great commuting convenience, where a 30-min's railway to Shanghai city centre, and one-hour of 60km car drive to XJTLU SIP campus are at choice.



VISION AND MISSION

愿景和使命



VISION

Become a cradle of elites for new industries, and a model of University of the Future.



MISSION

- Cultivate elites and leaders for new industries
- Facilitate the development of new technology for industries, explore the development pattern of new industries, and lead on the growth of industries in a healthy manner
- Explore an innovative educational model and supportive system for high-end applied talents
- Seek for a solution for University and Campus of the Future



INDUSTRY-THEMED SCHOOLS

行业学院

XJTLU Entrepreneur College (Taicang) breaks the shackles of the traditional tertiary education model, and cooperates, accordingly to the needs of the artificial intelligence and robotics era, with domestic and foreign companies and institutions with future influence and leadership potential to practice syntegrative education, optimises the combination and allocation of talents resources and production factors, establishes a collaborative innovation and entrepreneurship platform, and explores and creates a series of Schools that integrate and develop with industry partners.

INDUSTRY-THEMED SCHOOLS	UNDERGRADUATE	MASTER	FOUNDING PARTNER
School of AI and Advanced Computing	BEng Data Science and Big Data Technology with Contemporary Entrepreneurialism BEng AI	MSc Artificial Intelligence	Sugon
School of CHIPS	BEng Microelectronic Science and Engineering with Contemporary Entrepreneurialism	MRes Advanced Microelectronic Technology and Materials	ICLinked, SIMIT
Academy of Film and Creative Technology	BA Arts, Technology and Entertainment with Contemporary Entrepreneurialism	/	China Cultural Media Group Limited
School of Intelligent Finance and Business	BSc Intelligent Supply Chain with Contemporary Entrepreneurialism	MSc Digital Business	AMT
School of Intelligent Manufacturing Ecosystem	BEng Intelligent Manufacturing Engineering with Contemporary Entrepreneurialism	MSc Intelligent Engineering Science & Industrial Operations MSc Intelligent Engineering Science & Industrial Operations (Part time)	Haier Group
School of Internet of Things	BEng Internet of Things Engineering with Contemporary Entrepreneurialism	/	Eolane, Alicloud
School of Robotics	BEng Intelligent Robotics Engineering with Contemporary Entrepreneurialism	MSc Advanced Robotics Systems MSc Advanced Robotics Systems (part time)	Siasun Technology Co., Ltd
Entrepreneurship and Enterprise Hub	/	MSc Entrepreneurship and Innovation MSc Entrepreneurship and Innovation (part time)	Xbot Park (Changzhou)

XJTLU Entrepreneur College (Taicang) offers degree programmes spanning undergraduate, postgraduate taught, and postgraduate research levels. Complementing these, the College provides a suite of short courses and Non-degree Education programmes tailored for industry professionals, addressing diverse learning and professional development needs.

At XJTLU Entrepreneur College (Taicang), the student experience is defined by a continuous, problem-led learning journey. Moving beyond traditional course-centric models, learning at all levels (UG/PG/PHD) is driven by real-world projects. This approach integrates classroom study, corporate placements, technological R&D, and entrepreneurial exploration into a highly personalised "learning flow".

Students engage with authentic tasks and complex challenges, requiring them to actively synthesise interdisciplinary knowledge and develop competencies beyond conventional academic boundaries. They:

- Translate ideas into prototypes within the Innovation Factory.
- Participate in live projects with industry partners.
- Refine solutions and validate market potential through platforms like Puchuanghui.

Learning transcends "study for exams"; it becomes a systematic development process centred on action, tangible outcomes, and impact. By flexibly combining courses, projects, and platform resources, students progressively define their interests and professional direction, carving out unique development pathways within the SE educational framework.

This SE educational journey empowers students to:

- Build self-awareness.
- Enhance complex problem-solving capabilities.
- Emerge as future industry leaders equipped with global perspectives and practical competence.



LEARNING MALL 学习超市

The XJTLU Learning Mall acts as an innovation and entrepreneurial research and development hub as well as a centre for knowledge exchange and university-enterprise cooperation. It promotes the concept of lifelong learning for the XJTLU and Greater China extended learning community. It also works jointly with Schools of XJTLU Entrepreneur College (Taicang) and the academic units of XJTLU, collaborating on critical innovation projects and initiatives.

XJTLU Learning Mall:
<https://www.learningmall.cn/zh/>



ENTREPRENEURSHIP AND ENTERPRISE HUB 创业与企业港

The Entrepreneurship and Enterprise Hub (EEH), the core platform of XJTLU Entrepreneur College (Taicang), bridges the university and industry to drive sectoral advancement and upgrading. It collaborates closely with government agencies, businesses, and diverse institutions, integrating innovation resources and focusing on tech industries to actively foster an entrepreneurial ecosystem. Its goal is to become an industrial innovation harbour, cultivating future industry leaders.

Educationally, the EEH employs an integrated model to offer entrepreneurship minor programmes for undergraduate students, enhancing their innovative mindset and entrepreneurial skills to build a solid foundation for further study and careers. Concurrently, it partners with university departments to develop practice-oriented Master's programmes in Entrepreneurship and Innovation, dedicated to nurturing future business leaders with global perspectives.

To unlock student potential and provide a showcase platform, the EEH organises the XJTLU Global Entrepreneur Dreammaker Competition. Focusing on the early stages of innovation, this competition stimulates awareness of societal challenges and business opportunities, emphasising idea refinement. With no requirement for prototypes or market validation, it ensures broad participation and deep engagement in the creative process. Crucially, it also champions the transformation of education towards practice-led, competency-oriented approaches.

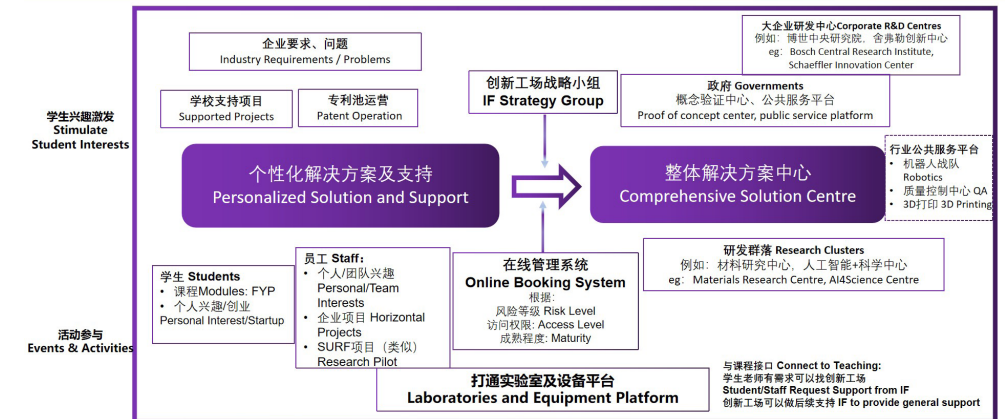
Furthermore, to translate ideas into tangible outcomes, the EEH operates the X3 Co-Venture and the Innovation Factory. X3 Co-Venture provides comprehensive support from inception to commercialisation, while the Innovation Factory focuses on transforming student concepts into viable products and tech solutions. These complementary platforms form the college's robust innovation support system, maximising student potential and creating societal value.

创新工场 INNOVATION FACTORY (IF)

The Innovation Factory (IF) at XJTLU Entrepreneur College (Taicang) is a one-stop platform for innovation and practical learning that aligns deeply with the University's Education 2.0 model and the philosophy of Syntegrative Education. IF encourages students to integrate academic knowledge with hands-on capabilities, seeking innovative breakthroughs through solving real-world problems. Here, students can explore personal interests, form interdisciplinary teams, develop prototypes, and validate technical solutions—all supported by structured mentorship and institutional resources that help turn ideas or research outputs into viable outcomes.

As a critical component of XJTLU's "Creativity-Innovation-Entrepreneurship" educational ecosystem, IF brings together the functions of individual laboratories into an integrated system. It unifies all laboratory resources across XJTLU Entrepreneur College (Taicang), supported by an online booking system and comprehensive training modules. The platform provides end-to-end support for students, staff, and industry partners—from idea incubation to practical implementation.

IF operates through two core functional centres: the Personalised Solution and Support Centre and the Comprehensive Solution Centre. These centres cover a wide range of cutting-edge domains including artificial intelligence, robotics, medical technologies, wearable devices, and new energy. Students benefit from co-supervision by academic experts and industry mentors, while working on projects embedded in real industrial contexts and joint R&D with companies.



Innovation Factory Operational Chain



Innovation Factory Project Portfolio

As a key enabler of university-industry collaboration and practice-based education at XJTLU, the Innovation Factory is actively building a learning ecosystem where the entire campus functions as a living lab—empowering students to grow through interdisciplinary experimentation and preparing them for broader opportunities in the future.



浦创汇 X³ CO-VENTURE

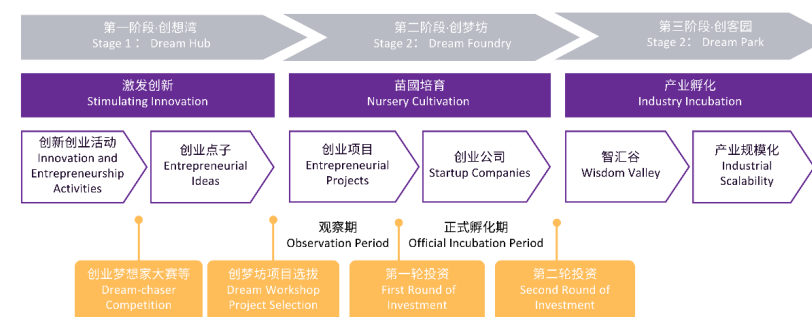
At XJTLU Entrepreneur College (Taicang), learning extends far beyond the classroom and into the real business world. As a vital part of the University's closed-loop Creativity-Innovation-Entrepreneurship system, X³ Co-Venture provides a practical, empowering platform for students through a three-stage incubation model, real-world startup scenarios, and interdisciplinary support mechanisms.

Since its launch in 2023, X³ Co-Venture has incubated a range of student-led ventures across frontier sectors including AI, the metaverse, and robotics. These projects empower students to move from concept development to business modeling, product creation, and social impact delivery. By integrating funding support from the Taicang Campus, academic supervision, and external industry networks, X³ Co-Venture fosters a truly immersive environment where “learning drives entrepreneurship, and entrepreneurship enhances learning.”



THREE-STAGE INCUBATION MODEL

X³ Co-Venture follows a structured path: Stimulating Innovation–Nursery Cultivation–Industry Incubation. It supports a full range of activities—from internal innovation salons, simulation-based competitions, and entrepreneurship workshops to co-developed startup projects with industry partners. Students are trained not only in innovation and business thinking but also in teamwork, communication, and leadership. Even early-stage ideas can be refined through mentorship, lab support, and capability centres, gradually evolving into market-ready entrepreneurial ventures.



X³ Co-Venture Three-Stage Incubation Model

At X³ Co-Venture, entrepreneurship is a form of learning. The platform supports student-led SMEs (small and medium enterprises), helping learners transform classroom knowledge into real business practices. For example, the Printing³ project combines intelligent manufacturing with 3D printing to operate unmanned retail kiosks on campus. Café and The Hall of SSS initiatives integrate design, aesthetics, and operations management, offering cross-disciplinary teams the opportunity to turn creativity into real-world experiences.

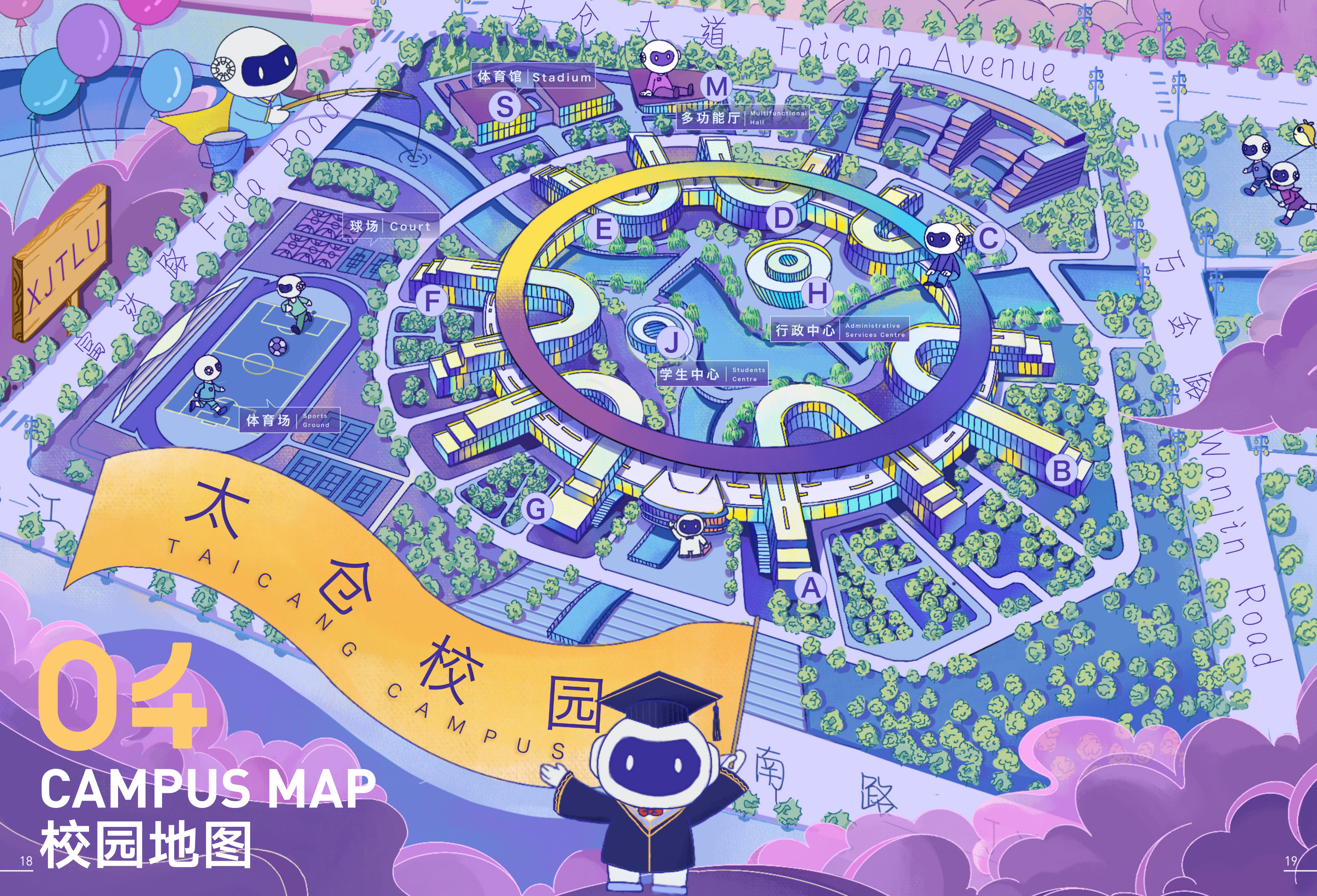


Printing³ Smart Unmanned Display Kiosk

Cozy Coffee Concept Design

The Hall of SSS

Additionally, X³ Co-Venture offers Exploration Funds and Angel Funds to support project development from idea validation to incubation—creating a low-risk, high-growth learning environment. Through entrepreneurial communities, alumni mentorship schemes, and co-creation projects with enterprises, students develop not only technical and business competencies but also a forward-looking mindset and strong sense of social responsibility.



体育馆 Stadium

多功能厅 Multifunctional Hall

球场 Court

体育场 Sports Ground

行政中心 Administrative Services Centre

学生中心 Students Centre

太
TAICANG
仓

校
CAMPUS
园

04

CAMPUS MAP

校园地图

05

ACADEMIC SPACE 教学区导引



BUILDING	UNITS	OPEN IN AY25/26
A	School of Intelligent Manufacturing Ecosystem, School of Robotics, School of CHIPS, Global Cultures and Languages Hub, Canteen	1-4F
B	Scholar Space, Canteen	1-5F
C	X³ Co-Venture, SynteX Studio, Innovation Factory, School of CHIPS, Career Centre, Counselling Centre	1-5F
D	School of AI and Advanced Computing, School of Internet of Things, Library	1-5F
E	School of Intelligent Finance and Business, Entrepreneurship and Enterprise Hub, Learning Mall	1-5F
G	Academy of Film and Creative Technology, Global Cultures and Languages Hub, Museum	1-3F, 5F
H	Administrative Services Centre	1-3F
J	Students Centre	1F
S	Stadium	1-2F
M	Multifunctional Hall	1F



CAMPUS SERVICE MANAGEMENT

校园服务管理

CENTRE NAME

CMO Service Centre (Taicang)

LOCATION

D-1008

PHONE NO.

0512-88970793(24h) & 0512-88970792

SERVICE SCOPE

Cleaning, Customer Service, Security, Event Support
and other campus service.



EXPRESS STATION

快递站



LOCATION

E-1012



OPERATING HOURS

Monday to Friday 9:00 - 18:00
Saturday 9:00 - 12:00





CAMPUS ACCESS MANAGEMENT

校园出入管理

LIST OF CAMPUS VEHICLE ENTRANCE AND EXIT

TYPE	NO.	GATE	OPEN
Vehicle entrance and exit on campus	1	North	24 hours
	2	East	24 hours
	3	West	24 hours
Underground car park	1	Between A2 and B1	7:00-22:00
	2	South of A Building	7:00-22:00
	3	Between C2 and D1	7:00-22:00
	4	Between D2 and E1	7:00-22:00
	5	Between F2 and G1	7:00-22:00
	6	North of S Building	7:00-22:00
	7	West of S Building	7:00-22:00



LIST OF MAIN GATES OF THE BUILDINGS

NO.	LOCATION	OPENING TIME
1	A Building South	24 hours
2	A Building Canteen entrance	7:00-22:00
3	B Building Southeast	24 hours
4	C Building West	7:00-22:00
5	D Building North	24 hours
6	D Building East	7:00-22:00
7	D Building Library entrance	7:00-22:00
8	E Building North	24 hours
9	F Building Southwest	7:00-22:00
10	G Building South	24 hours
11	G Building Inner Ring	7:00-22:00
12	H Building North	24 hours
13	S GYM Building West	7:00-22:00
14	J Building South	7:00-22:00



CAMPUS SAFETY REMINDER

- To ensure the campus safety, random inspection of identification will be conducted in campus buildings. Please kindly cooperate with the identity verification and do not lend your ID card to others.
- Non-motorized vehicles (including electric bicycles, bicycles, etc.) entering the campus should be parked in designated areas. It is strictly prohibited to block entrances and exits, evacuation passages, accessible passages. No vehicles are allowed to enter in the buildings.
- All campus buildings will be cleared at 22:00, please refrain from lingering on campus or staying overnight in non-overnight study areas. Please feel free to contact us in case of any emergencies.



MERCHANT SERVICE MANAGEMENT

商户服务信息

CANTEEN					
Name	Location	Food type	Dining option	Opening hours	
				Lunch	Dinner
Life & Hope	Building A A-1004/ A-0001	Chinese cuisine	Dining-in& Take-away	11:00-14:00 (Mon-Sun)	17:00-20:00 (Mon-Sun)
Seven VIP rooms are available on the first floor in Life & Hope, each of which can accommodate 8 to 10 people for dining.					
WESTERN RESTAURANT					
Name	Location	Food type	Dining option	Opening hours	
Zemo Café	Building F F-1005	Western cuisine	Dining-in& Take-away	10:00-19:00 (Mon-Fri)	
CONVENIENCE STORE					
Name	Location	Opening hours			
Mong Kok Store	Building E E-1008	08:00-20:00 (Mon-Fri) 09:30-16:00 (Sat)			

***Note:** The information above is subject to change based on the actual operational circumstances, any adjustments will be released through UC.



STATIONERY ROOM

办公用品领用处

BUILDING	ROOM	OPENING HOURS
A	A-3027	9:00 - 17:00 (Mon & Wed & Fri)
E	E-3016	9:00 - 17:00 (Tue & Thu)
G	G-2009	9:00 - 17:00 (Tue & Thu)
H	H-1017	9:00 - 17:00 (Mon & Wed & Fri)

06

RESIDENTIAL AREA 生活区及服务



RESIDENCE AREA



SUPPORTING FACILITIES & AMENITIES 周边配套服务

XJTLU Entrepreneur College (Taicang) is located in the core area of Loujiang New Town, Taicang City, Suzhou, positioned at a key node of the integrated development of the Yangtze River Delta, offering a prominent regional advantage. The campus design centres on the core philosophy of "Symbiosis and Integration", creating a comprehensive educational community that combines modern teaching, comfortable living, and diverse leisure facilities.

The residential area lies to the west of the academic zone, providing a variety of accommodation options for students and staff. The residential area features Canteen 8, which will later introduce a diverse range of cuisines. It also offers 24-hour convenience stores, laundrettes, medical clinics, express delivery stations, and leisure facilities such as gyms and e-sports arenas. Additionally, 381 intelligent underground parking spaces (including 42 EV charging spots) ensure convenient commuting.

Innovatively, the campus has established a dual-support system comprising the "residential area + HouLang Commercial Zone." The HouLang Commercial Zone consists of two sections: the 15,000 sqm Qingcao Lane Plaza and the 57,500 sqm HouLang Young. The former creates a "2-minute living circle," while the latter focuses on cultural, artistic, and trendy entertainment, together forming a vibrant hub for dining, retail, leisure, and socialising.

The entire campus plan fully embodies the design principles of internationalisation, ecological sustainability, and smart technology. Through its distinctive industry-education integration approach, it provides students with an open, inclusive, and dynamic modern learning and living environment, fostering future industry leaders.





ACCOMMODATION OPTIONS 公寓类型



STUDENTS ACCOMMODATION OPTIONS AND FEES

The student accommodation is comprised of quad rooms, double rooms and single rooms.



STAFF ACCOMMODATION OPTIONS AND FEE

One-bedroom suite with an annual .



FACILITIES 配套设施



Catering services are housed in Building 8 (canteen). In the first year, the first floor of the canteen is open.

A wide range of cuisines are available, including western food, Chinese food, café, hot pot, bakeries, bubble tea, Japanese food, Korean food, barbecue, and Mala Tang.



Living facilities include a supermarket, 24-hour convenience stores, laundry services, beauty salons, police station, clinic, and telecommunications.



Retailing services include clothing, flowers, bicycles, accessories, imported food, cosmetics and mobile phones.



381 underground parking spaces, including 42 charging spaces, are available.

07

SYNTEGRATIVE SERVICES PLATFORM

融合式服务平台

The Syntegrative Services Platform integrates all the university professional services and support systems in alignment with principles of "delaying management, high efficiency, one-university-two-sites, consistent experiences". It consists of a wide range of business functions such as academic services, student support, IT services, library support, safety and health, staff support, cultural innovation, and campus services, which aims to combine both online and offline support provided across two campuses.

The onsite Syntegrative Services Platform is located on the first floor of the Administrative Services Centre (Building H) and welcomes all students, staff, partners and visitors.

The Library support team is located in Building D, the Library.

ONE-STOP STUDENT SERVICE CENTRE studentonestop.tc@xjtlu.edu.cn

STUDENT ACCOMMODATION SERVICE accommodation.tc@xjtlu.edu.cn

REGISTRY SERVICES AND SUPPORT academicservices@xjtlu.edu.cn

IT SERVICES it.tc@xjtlu.edu.cn

STUDENT COUNSELLING CENTRE counselling.tc@xjtlu.edu.cn

ART CENTRE artcenter.tc@xjtlu.edu.cn

STUDENT ORGANISATION AND SUPPORT scs.tc@xjtlu.edu.cn

PHYSICAL EDUCATION CENTRE pec.tc@xjtlu.edu.cn

CAREER SERVICES careers@xjtlu.edu.cn

HR SERVICES hr@xjtlu.edu.cn

CAMPUS MANAGEMENT OFFICE cmo.tc@xjtlu.edu

08

PUBLIC SERVICES 公共服务

PUBLIC SERVICES



HOW TO GET TO US 如何到达



AIRPORTS

50 km from Shanghai Hongqiao International Airport, about 45 minutes by car;

90 km from Shanghai Pudong International Airport, about 1 hour and 30 minutes by car;

85 km from Wuxi Shuofang International Airport, about 1 hour by car;

85 km from Nantong Xingdong International Airport, about 1 hour and 30 minutes by car;

150 km from Changzhou Benniu International Airport, about 2 hours by car.



HIGH-SPEED TRAINS

It takes about 30 minutes from Taicang Station to Shanghai Hongqiao Station and Shanghai Station.



FROM SUZHOU INDUSTRIAL PARK

60 km of direct distance, and takes about 1 hour by car.



PUBLIC TRANSPORTATION 公共交通

BUS SERVICE NEAR THE CAMPUS

No.109

Taichang Station – Jiangnan Road – Yuelu Station – Taichang Avenue – Shanghai East Road – Renmin South Road – Xianfu West Street – Chengxi Bus Terminal Station

No.139

Youyi Station (Residential Area) - Shanghai East Road - Renmin South Road - Ocean Embankment - Taichang South Station

No.138

Taichang Station – Jiangnan Station – Yuelu Station – Taichang Avenue – Xianfu East Street – Taichang South Station

COACH SERVICES

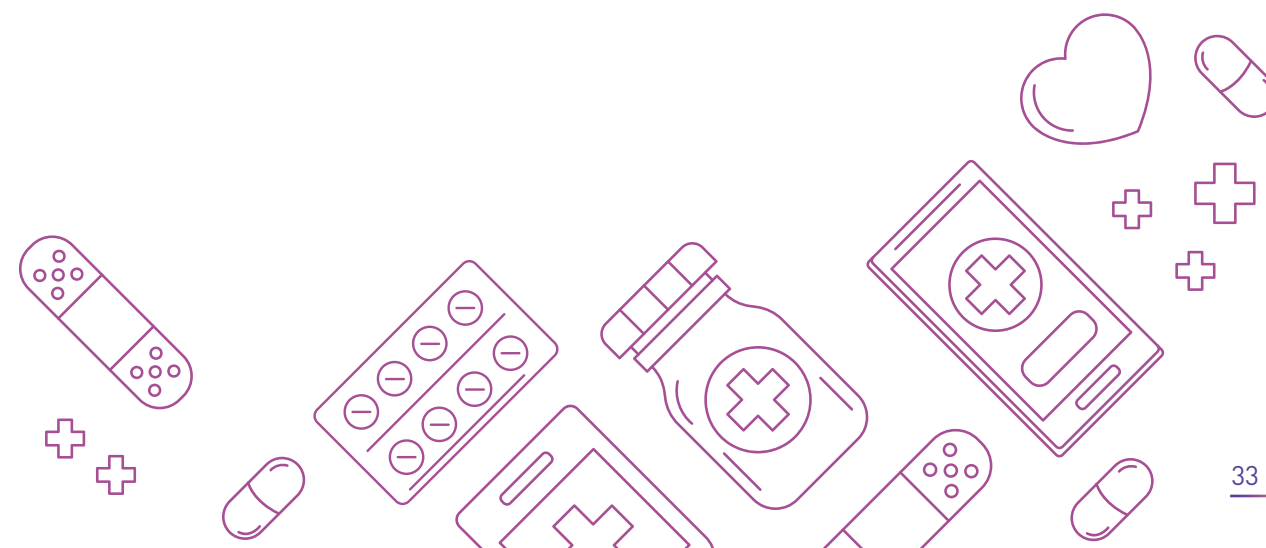
TAICANG COACH STATION

Located at No. 107, Taiping North Road, Taichang Coach Station offers 71 long-distance and interurban coach lines to and from Jiangsu, Zhejiang, Shanghai, Anhui, Henan and other provinces, with more than 500 runs per day on average. There are also three inter-provincial express lines connecting Shanghai Rail Transit Line 7, Shanghai Rail Transit Line 11 and Hongqiao Hub.



MEDICAL CARE AND INSURANCE 医疗和保险

Medical Institutions	Type	Category	Level	Tel	Address	Language	Distance from campus (km)
Taichang First People's Hospital	General Hospital	Public	3A	0512-53101356	58 Changsheng Nan Lu, Taichang, Jiangsu Province	Chinese	3.4
Ruijin Hospital Taichang Branch	General Hospital	PublicW	3A	/	Intersection of Lujia North Road and Zhenghe Middle Road, Taichang City, Jiangsu Province	Chinese	3.7
Taichang Traditional Chinese Medicine Hospital	General Hospital	Public	3B	0512-53728661	138 Renmin Nan Lu, Taichang, Jiangsu Province	Chinese	8.4





BANK 银行

AGRICULTURAL BANK OF CHINA

| TAICANG NEW DISTRICT SUB-BRANCH

Address: Building 6, No. 199, Shanghai East Road, Chengxiang Town, Taicang, Jiangsu Province

Service Tel: 0512-33012820

Business hours on weekdays: 8:15-16:00

| TAICANG BANQIAO SUB-BRANCH

Address: No. 58, Wuzhou West Road, Chengxiang Town, Taicang, Jiangsu Province

Service Tel: 0512-53447950

Business hours on weekdays: 8:00-16:00

| TAICANG LUDU SUB-BRANCH

Address: No. 36, Zhongshi Road, Ludu Town, Taicang, Jiangsu Province

Service Tel: 0512-53458249

Business hours on weekdays: 8:15-16:15

| BUSINESS OFFICE OF SALES DEPARTMENT OF TAICANG BRANCH

Address: No. 2, Shanghai West Road, Chengxiang Town, Taicang, Jiangsu Province

Service Tel: 0512-53534050

Business hours on weekdays: 8:00-16:15

Saturday: 8:30-16:00, **Sunday:** 8:30-16:00



XJTLU ENTREPRENEUR COLLEGE (TAICANG)

HOTEL 酒店

| FIVE-STAR HOTELS ☆

1. ZHONGGU INTERNATIONAL HOTEL: No. 89, Shanghai East Road. 7km away from the campus, 15 minutes by car.
2. HUAFA PULLMAN HOTEL: No. 188, Shuyuan Road. 10km away from the campus, 20 minutes by car.
3. ROSE MANOR HOTEL: No. 1, Rose Road. 12km away from the campus, 20 minutes by car.
4. MARITIM HOTEL TAICANG: No. 88 Haiyundi Road. 8.5 kilometers from the campus. 20 minutes by car.

| FOUR-STAR HOTELS ☆

1. LUDU HOTEL: No. 78, Zhenghe Middle Road. 3km away from the campus, 7 minutes by car.
2. FOUR POINTS BY SHERATON: No. 288, Shanghai East Road. 5km away from the campus, 10 minutes by car.
3. ROSEDALE HOTEL : No. 106, Shanghai East Road. 7km away from XJTLU (Taicang) campus, 15 minutes by car.
4. ATOUR HOTEL: No. 39, Dongcang South Road, Loudong Street. 8km away from the campus, 15 minutes by car.
5. LOUDONG HOTEL: No. 6, Xianfu Street. 9km away from the campus, 20 minutes by car.
6. JIN JIANG INTERNATIONAL HOTEL: No.89 Shanghai East Road. 5 kilometers from the campus.15 minutes by car
7. HOLIDAY INN: No.9 Xinhua West Road.7 kilometers from the campus.20 minutes by car.

| BUSINESS HOTELS ☆

1. ATOUR HOTEL : Building 2, No. 39, Dongcang South Road, Loudong Street, 5.4 kilometers from the campus.15 minutes by car.
2. VIENNA INTERNATIONAL HOTEL TAICANG WANDA SQUARE: Wanda Plaza, No. 188, Shanghai East Road. 7 kilometers from the campus. 15 minutes by car.

| SHOPPING CENTRES 🏠

1. WANDA PLAZA: 188 Shanghai East Road. 7km away from the campus, 15 minutes by car.
2. HUAFA PLAZA: No. 96, Renmin South Road. 10km away from the campus, 20 minutes by car.
3. NANYANG PLAZA: No. 96, Renmin South Road. 10km away from the campus, 25 minutes by car.

09

CONTACT US 联系我们

WEBSITE: <https://www.xjtlu.edu.cn/en/>

EMAIL: Taicang.Inquiry@xjtlu.edu.cn

ADDRESS: No. 111, Taicang Avenue, Taicang
City, Suzhou City, Jiangsu Province

