

# UNIVERSITY OF LIVERPOOL INTERNATIONAL PROGRAMME

## TERMS AND CONDITIONS 2025/26

### I. Programme Introduction

With the purposes to give full play to the educational advantages and characteristics of Xi'an Jiaotong-Liverpool University (hereafter referred to as XJTLU) and University of Liverpool (hereafter referred to as UoL), both parties agree to work together in good faith to carry out collaborative International Programme. This programme introduces the curriculum, teaching plans, and pedagogical model of the UoL. Leveraging XJTLU's academic strengths, it provides students with high-quality international education and a globalised learning experience.

The programme consists of two study phases.

**Phase One:** Students complete two academic years at XJTLU (SIP):

- First Year: focusing on foundation courses including EAP, general education, physical education, and non-core discipline basics.
- Second Year: taking accredited UoL Year 1 courses.

**Phase Two:** After successfully completing Phase One, students will then transfer to UoL to complete their UoL degree programme, subject to being granted an entry visa to the UK. On successful completion of their programme students will receive a UoL degree. Upon graduation, students can apply for academic certification of their degree through the Chinese Service Center for Scholarly Exchange (CSCSE) under the Ministry of Education of China.

### II. Eligibility Requirements

The programme is designed for outstanding high school graduates who demonstrate strong academic performance, exemplary moral character, and robust physical and mental health. Applicants should fully embrace the international educational philosophy of both XJTLU and UoL, and must possess valid qualifications from either China's National Higher Education Entrance Examination (Gaokao) or internationally recognised standardised tests.

1. Students taking Gaokao:

- Priority application is given to those who meet or exceed the Special Type Admission Cutoff Score or First-Tier Undergraduate Cutoff Score in their respective province or region.

2. Students opting for the international education path will be assessed on their high school transcripts and internationally recognised exam results (e.g.. AP, IB, A-level, OSSD, etc.) along with their English qualifications.

- IELTS 5.5 (minimum 5.0 in each sub-score) or TOEFL (IBT) 72 or PTE (academic) 58.

3. Considering recent changes affecting Chinese students pursuing higher education in the United States, we warmly welcome applications from high school graduates who have received offers from US universities, and current students who are studying at the US universities. Students who have completed 1 year of university education and have been subsequently impacted by visa regulation changes can be considered for advanced entry (Stage 2) on a case-by-case basis.

### III. Application Procedure

**Onsite Consultation & Application:** Students can visit Rooms 379 and 381 in the Foundation Building at the North Campus of XJTLU starting from June 16, 2025, for programme consultations. The team can provide on-site guidance for the online application process. An appointment at least one day in advance is required.

**Online Application Submission:** All prospective applicants must log in to the official Admissions Portal, accurately complete all required information, and submit clearly legible copies of supporting documents. Applicants bear full responsibility for the authenticity of all submitted materials, and any submission of falsified documents will result in immediate disqualification from the admission process and revocation of any admission offers.

Both on-site consultation appointments and online application submissions must be completed through the official application platform. For detailed procedures regarding consultation booking, application submission, and related important notes, please refer to the attached "[Appointment Booking and Application Guide](#)".

### IV. Programme Choice

Programme information can be found on UoL's official website: <https://www.liverpool.ac.uk/courses/xjtlu>. To ensure consistent academic standards and teaching quality, students selecting a relevant programme must complete all prerequisite courses required for the chosen programme.

During this phase, students may also apply to switch to another programme, provided they meet the corresponding transfer requirements. After entry, students may refer to the Programme Selection and Transfer Policy for details. Some programmes may have specific academic performance requirements for one or multiple courses in the first semester of the Year One.

#### V. Degree Award

Students studying for UoL degrees under this arrangement who successfully complete the foundation year and the next year of their programme but who, for whatever reason, are unable or choose not to continue with their studies will be entitled to a Certificate in Higher Education Exit Award of UoL. Students studying for UoL awards only who successfully complete the foundation year and the next two years of their programme but who, for whatever reason, are unable (or choose not) to continue with their studies will be entitled to a Diploma in Higher Education Exit Award of UoL. Students who successfully complete the foundation year and the next three years of their programme of study will receive a classified degree certificate of UoL and transcript of studies/diploma supplement.

#### VI.Fees

Fees	Phase 1 (XJTLU)	RMB 218,000 per academic year
	Phase 2 (UoL)	On transfer to UoL to complete their degree programmes, students will be liable to pay the appropriate overseas student tuition fee less the prevailing discount for XJTLU students (currently 10%). Details of current fee levels can be accessed at <a href="https://www.liverpool.ac.uk/courses/xjtlu">https://www.liverpool.ac.uk/courses/xjtlu</a>
Accommodation Fees (XJTLU)	The accommodation fee is collected by the university and transferred in full to the dormitory owner's account—the university does not retain any portion of these fees.	

	<ul style="list-style-type: none"> <li>Year 1 &amp; 2 (XJTLU - Suzhou Industrial Park): The standard rate is: Quad-occupancy rooms RMB 2,200 per person per academic year.</li> </ul>
Service Charge	RMB 2,000 per academic year (Covers textbooks and other materials, with final adjustments for overpayment or underpayment.)

## VII. Additional Provisions

1. Students studying for UoL degrees under this arrangement will not be eligible for any scholarships available for undergraduate study at XJTLU and will not be eligible to compete for any of the undergraduate tuition fee scholarships available specifically for dual degree students transferring from XJTLU to study at Liverpool. They will, however, be entitled to scholarships provided by UoL for postgraduate study at Liverpool subject to terms and conditions for such scholarships, should they progress to postgraduate study at Liverpool on completion of their undergraduate degree.
2. Both UoL and XJTLU welcome students with special education needs and will try to accommodate students' needs wherever possible. Disabilities, special needs (including dyslexia or other specific learning difficulty) or medical conditions, must be declared at the point of application. As all the students enrolled through this programme must go to Liverpool to complete Y3 and Y4 studies, students whose conditions do not allow them to study and live abroad are precluded from admission onto the programme.

## VIII. Contact Information

Liverpool International Programme Admissions Team

Tel: 0512-81888383

Email: [SLA-Admissions@xjtlu.edu.cn](mailto:SLA-Admissions@xjtlu.edu.cn)

## Appendix

### **Appointment Booking and Application Guide**

Applicants are advised to read this guide carefully and ensure the accuracy and completeness of all information provided in the application form.

#### **I. Consultation Methods**

During the application period, if you have any questions regarding the program, you may seek consultation through the following channels. Please note that regardless of the consultation method, all students must submit a formal online application along with the required documents. Failure to complete the online application process will be regarded as not having submitted an application.

##### **1. On-site Consultation**

- Please follow the appointment booking process outlined in **Section II: On-site Consultation Booking and Online Application Submission** of this guide. Book your consultation slot at least one day in advance on the application platform. Slots are available on a first-come, first-served basis.
- Location: Rooms 379 & 381, Foundation Building, North Campus, Xi'an Jiaotong-Liverpool University, 111 Ren'ai Road, Suzhou Industrial Park.
- Required Documents:
  - Original ID card
  - Relevant exam score reports (if available, e.g., Gaokao score screenshot, examinee ID/number, internationally recognised test results, etc.)
- Parking Notice: Due to limited parking space on campus, visitors driving to the university are advised to park in nearby off-campus parking areas.
- Security Check: Campus security will verify your appointment confirmation upon entry. Please have your booking record from the application system ready.

##### **2. Email: [SLA-admissions@xjtlu.edu.cn](mailto:SLA-admissions@xjtlu.edu.cn)**

##### **3. Phone: 0512-81888383**

For technical issues during online submission (e.g., login failures or system errors), please contact [intp@xjtlu.edu.cn](mailto:intp@xjtlu.edu.cn) or call 13402636933.

If phone lines are busy, email inquiries are recommended.

## II. On-site Consultation Booking and Online Application Submission

All prospective applicants must submit their applications and supporting documents via the official application platform, including: Student and parent basic information; Academic transcripts, high school diploma, ID card copies, etc.; Program choice.

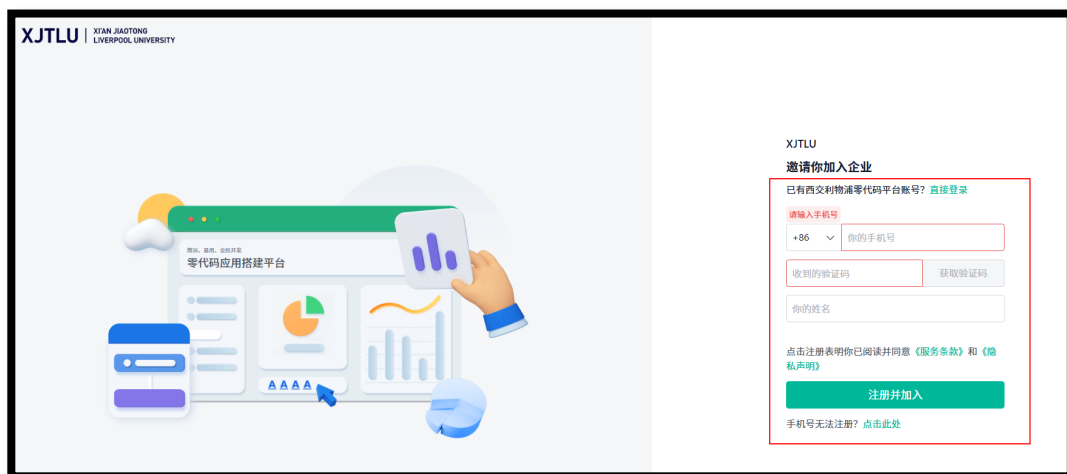
Key Notes: Both **on-site consultation booking** and **online application submission** must be completed on the official platform. The process includes the following steps:

### 1. Register an Account on the Official Application Platform

- Registration Link:

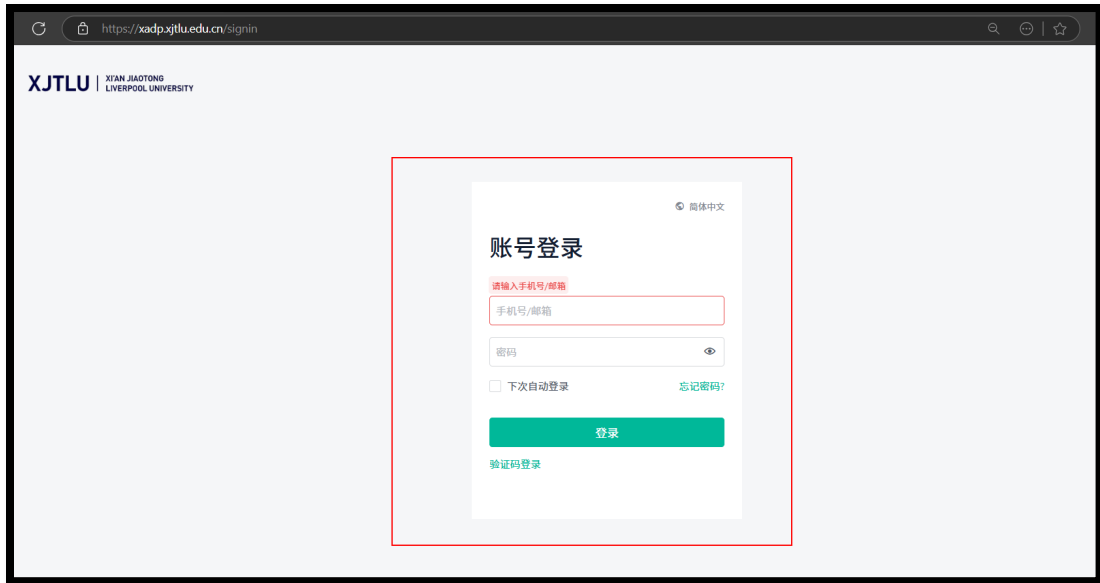
[https://xadp.xjtlu.edu.cn/corp\\_join/6129ffa6762a230008b1f4d8?dept\\_no=14](https://xadp.xjtlu.edu.cn/corp_join/6129ffa6762a230008b1f4d8?dept_no=14)

(Enter the full URL). You may register via mobile number (recommended) or email.



- Login Link After Registration: <https://xadp.xjtlu.edu.cn/signin>

*Note: The registration and login URLs are different.*



- Post-Login Interface:
  - Click "On-site Consultation Booking" to schedule an appointment.
  - Click "Overseas Study Program" to begin the online application.



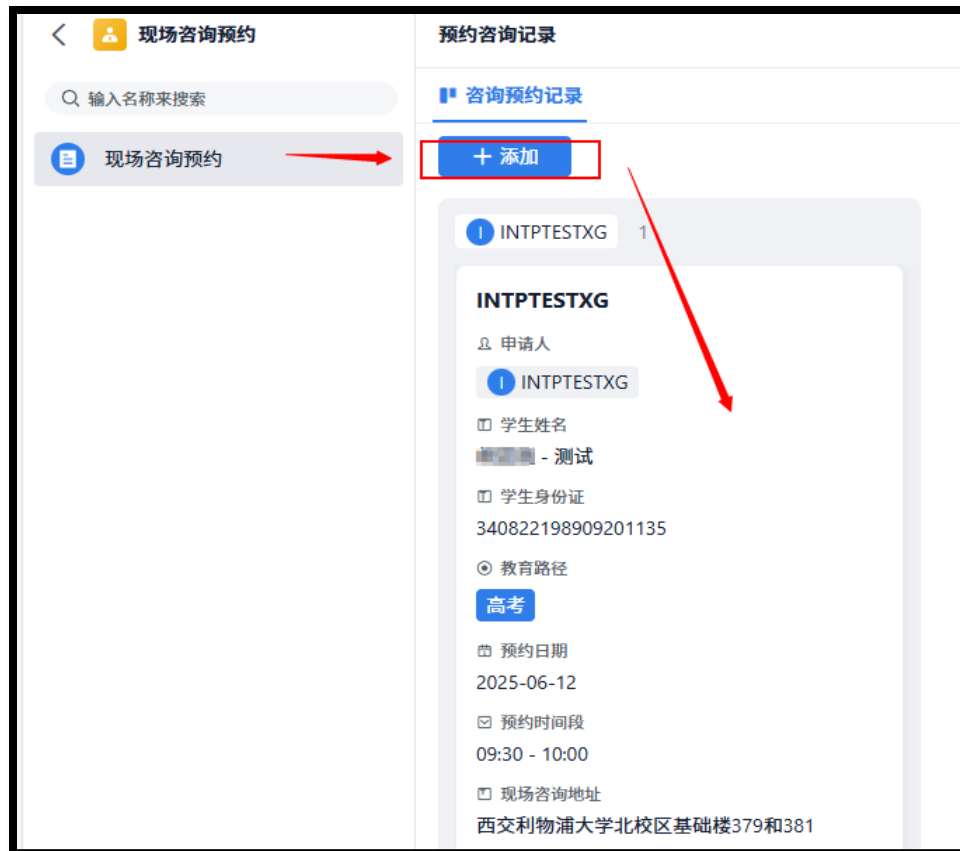
## 2. On-site Consultation Booking

- Book your slot at least one day in advance via the "On-site Consultation Booking" section. Each student may book only one session.



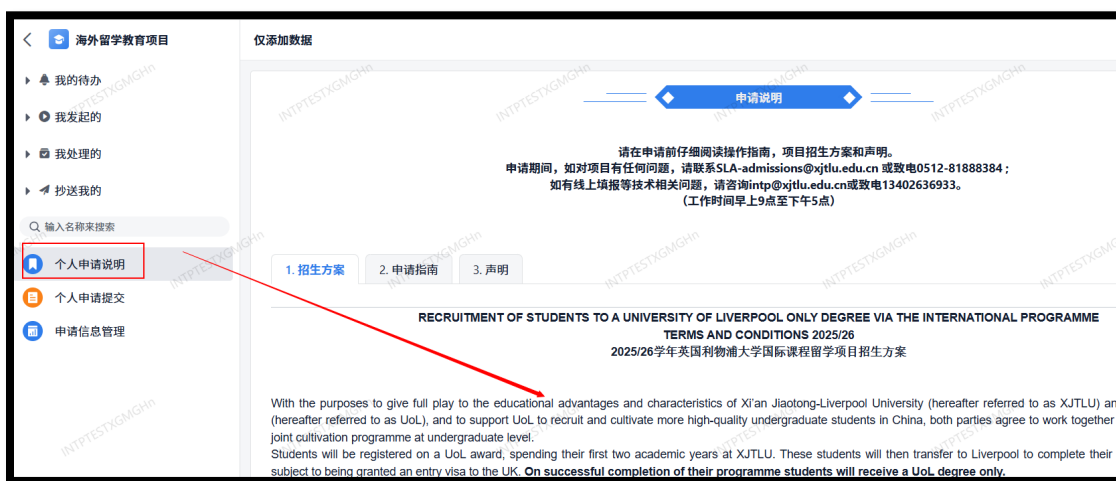
- After booking, prepare your ID card and exam score reports (if applicable) for the consultation.



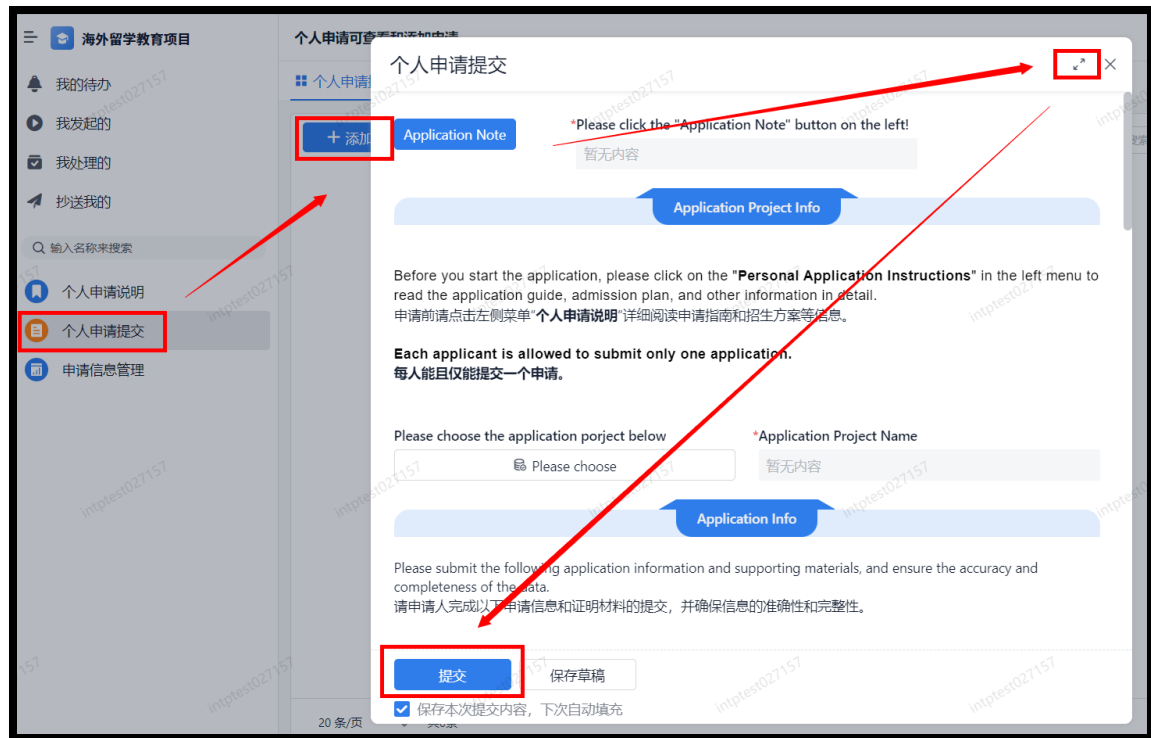


### 3. Complete and Submit the Online Application Form

- Under "**Overseas Study Programme**", click "**Personal Application Submission**" to fill out and submit the form.



- Expand the form using the top-right button for easier completion.



#### 4. Revise Application Materials (If Required)

- After submission, the project team will conduct an initial review. Check the status via:
  - "Materials Approved – Pending University of Liverpool Review": Initial approval.
  - "Click 'My Tasks' to Revise Application": Corrections needed.
  - "Does Not Meet Eligibility": Application rejected.

海外留学教育项目

个人申请可查看和添加申请

个人申请提交-材料审核

+ 添加

25/26学年英国利物浦大学留...

Chinese Name  
intptest02

National ID  
340822198909201135

XJTLU School  
Pharmacy

XJTLU Programme  
BSc Pharmaceutical Sciences

UoL Programme  
BSc Pharmacology

提交时间  
2024-07-16 13:19:39

更新时间  
2024-07-16 13:24:51

流程状态

进行中

Application Materials Review

Materials Review Comments

20 条/页 共1条

- If revisions are requested, navigate to **"My Tasks"** to address feedback and resubmit.



## 5. Final Admission Decision

- Once initial approval is granted, the University of Liverpool will conduct the final review.
- Check the "UoL Admission Result" under "Application Information Management" for the outcome.



### III. Timeline

#### 1. Phase 1 Deadline: July 27

- Initial review results will be announced by **August 1**, followed by the University of Liverpool's final decision around **August 10**.

#### 2. Admission Notice:

- Successful applicants will receive an admission notice with instructions for enrollment (registration, course selection, fee payment, etc.).

#### 3. Official Offer Letter:

- The University of Liverpool will issue formal offer letters in **late August**.

#### 4. Phase 2 Deadline: August 15 (tentative)

- Subsequent arrangements will be notified separately. Final decisions are expected by **late August**.