



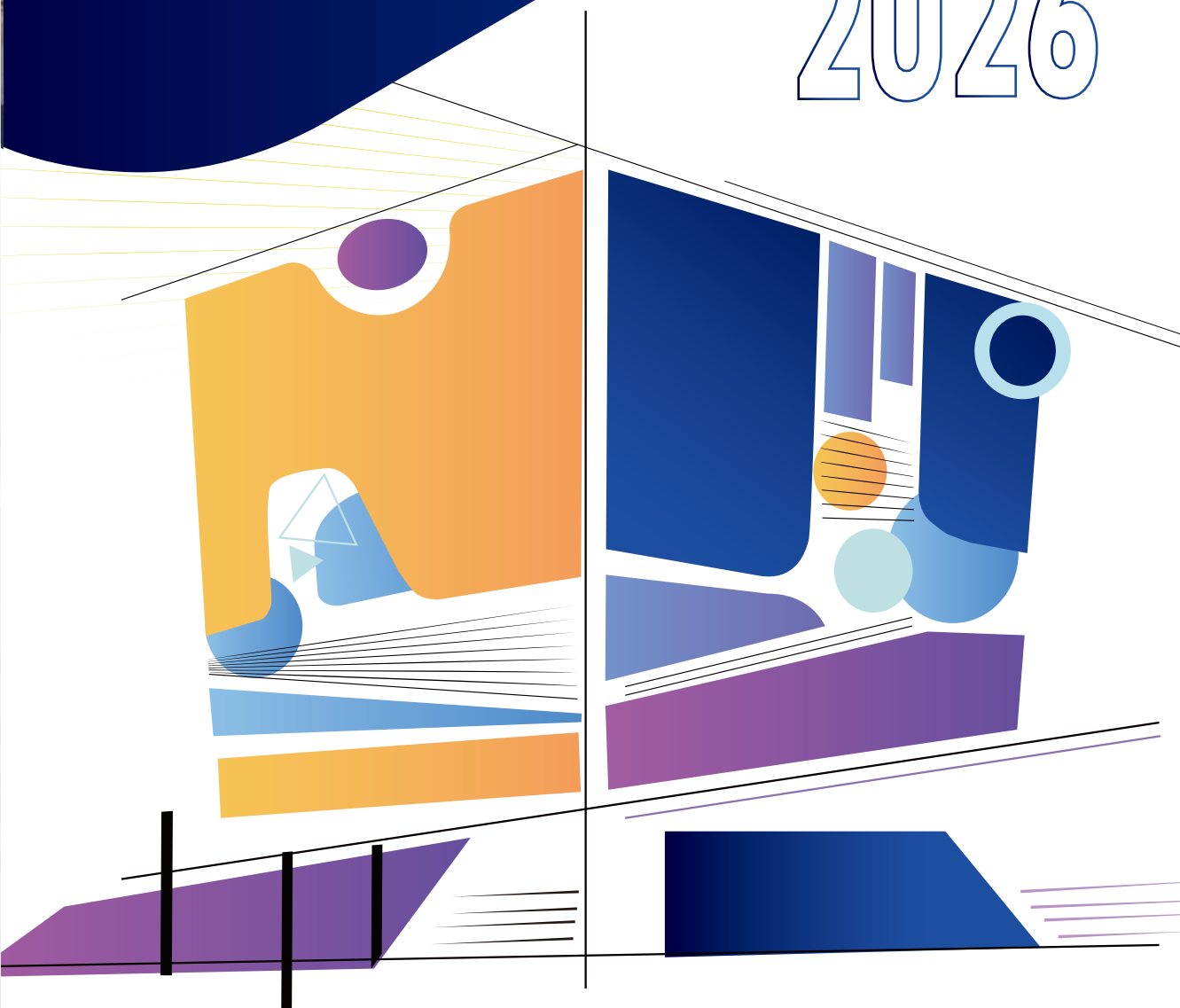
Xi'an Jiaotong-Liverpool University

西交利物浦大學

XJTLU

Doctoral Research Prospectus

2026



About XJTLU

Xi'an Jiaotong-Liverpool University (XJTLU) is an international joint venture university founded by Xi'an Jiaotong University in China and the University of Liverpool in the United Kingdom. As an independent Sino-foreign cooperative university, it captures the essence of both prestigious parent universities and is the largest of such universities approved by the Ministry of Education in China.

All academic units at XJTLU offer PhD opportunities, which help to fulfil XJTLU's vision of "becoming a research-led international university in China and a Chinese university recognised internationally for its unique features".

Why Study at XJTLU?



World-leading research environment and support

You will become a part of our dynamic research community, collaborating with leading researchers, accessing world-class research facilities, and being eligible for dedicated research funding support.



Internationally recognised UK degree in China

You will obtain a globally recognised doctoral degree from the University of Liverpool, a distinguished member of the Russell Group, while acquiring profound insights and invaluable cross-cultural experience during your studies in China.



Joint supervision by renowned academics and industry expertise

You will be under the supervision of esteemed academics from both XJTLU and the University of Liverpool, with chances to engage in cross-disciplinary projects merging industry expertise. Some programmes also involve academics from Xi'an Jiaotong University.



Dedicated research development support

You will receive dedicated research funding to cover travel expenses for attending conferences. You will also have the opportunity to undertake a research visit to the University of Liverpool or Xi'an Jiaotong University, subject to separate arrangements.



Cultural awareness

China represents a world of ideas and values built on one of the world's oldest cultures. You'll gain a new perspective on your own life.



Location advantage

Being a major economic centre and focal point of trade in China, Suzhou combines a 2,500-year-old history with modern life in the Yangtze River Delta Area, quite often referred as the "Oriental Venice". It only takes 25 minutes by train to travel to Shanghai.

Minimum Entry Requirements

Academic requirements

Country	Academic requirements
UK	<ul style="list-style-type: none">• UK first or 2:1 class Bachelor degree with Honours• UK Pass with Merit Master degree
North America	3.0 Cumulative GPA (out of 4) for Bachelor and Master degree holders
China	<ul style="list-style-type: none">• Top 100 of the latest Shanghai Ranking or World-class universities or First-class disciplines: 75 percent or above (Weighted Average Mark)• Other universities: 80 – 85 percent or above (Weighted Average Mark), depending on your undergraduate/postgraduate institution
Other regions	<ul style="list-style-type: none">• Equivalent to the above UK first or 2:1 class Bachelor degree• Pass with Merit Master degree

English language requirements

All students applying for the PhD programme must demonstrate proficiency in English and meet the University's language requirements.

- IELTS (Academic), TOEFL iBT, and PTE (Academic) scores are accepted as proof of English proficiency. The test must be taken at an official test center, and the report date should be within two years of the intended enrollment date.
- IELTS One Skill Retakes are accepted if taken within 60 days of the original test date. MyBest Scores of TOEFL iBT are not accepted.
- You will qualify for an exemption from the English language requirement if one of the following applies to you:
 - You are a national of a majority English-speaking country as defined by UKVI.
 - You have completed/are completing a degree in XJTLU or in the following countries or territories (Chinese joint venture programmes are not included): Antigua and Barbuda; Australia; the Bahamas; Barbados; Belize; the British Overseas Territories; Dominica; Grenada; Guyana; Ireland; Jamaica; Malta; New Zealand; St Kitts and Nevis; St Lucia; St Vincent and the Grenadines; Trinidad and Tobago; UK; USA. Please note this only valid for two years from the date awarded the degree to the start date of the PhD programme.

Note: XJTLU strives to adopt and adhere to recognised international standards in providing equality of opportunity, and fairness in the admissions process and decision-making. We evaluate each application on its individual merits and in comparison with other applications. We do not guarantee to make an offer to all applicants who have met or are predicted to meet the minimum entry requirements.

Tuition Fees

01

Full-time programme: the tuition fee payable on postgraduate research programmes is RMB 99,000 per year. It normally takes three to four years to complete a full-time doctoral programme.

02

Part-time programme: the tuition fee payable is RMB 75,000 per year. Part-time doctoral study is typically completed in four to six years.

Funding Opportunities

XJTLU offers a range of scholarships to highly motivated and dedicated full-time doctoral candidates to pursue research leading to a doctoral degree. Qualified applicants may receive financial support including:

A full scholarship: consists of a tuition fee waiver for three years (RMB 297,000 total value) and a monthly stipend of RMB 5,000 for three years (RMB 180,000 total value).

A fees-only scholarship: a tuition fee waiver for three years (RMB 297,000 total value).

A partial tuition-fee scholarship: a tuition fee up to 50% reduction for three years (RMB 148,500 total value).



Scan the QR code for scholarship information

1. Apply for a Scholarship for an Existing Funded PhD Project

You can apply for an existing PhD project which has received funds from the University or external funding bodies. These projects have an established research topic and a formed supervisory team.

These funded projects will remain open until the positions are filled. The start date of the programme is normally the first day of March, June, September, or December.

2. Apply for PhD Merit-Based Scholarship

This type of scholarship is intended to support candidates with outstanding research potential. Prospective applicants seeking consideration for a merit-based scholarship may indicate their interest when submitting their application to the university's doctoral programmes.

The school and University's Postgraduate Research Scholarship Panel will conduct a comprehensive evaluation based on the applicants' academic excellence, research potential, research experience, and achievements, and will recommend the most qualified candidates for the award.

Note: If you are graduates of XJTLU, the University of Liverpool or Xi'an Jiaotong University, you will automatically receive a discount of 20 percent of the tuition fee. Scholarships and alumni discounts are awarded on a "whichever is higher" basis and may not be combined.



How to Apply

1. Identify your potential supervisor

Identifying a potential supervisor is required before submitting an application. This gives you the chance to discuss their availability and your proposed research. More importantly, it gives you the opportunity to decide if they'd be a good fit for you. The potential supervisor list is available on the individual programme page.

2. Submit your application

You can submit your application through the online system on the university website when your application materials are ready. If you are applying for an existing funded project, please make sure that you've discussed the funding opportunity with the principal supervisor and fill in the correct funding code.

After Application

Your application will be initially reviewed by XJTLU and then forwarded to the University of Liverpool for final review and decision.

After submission of your online application, you may be contacted by the XJTLU Graduate School (doctoralstudies@xjtlu.edu.cn) for additional documents or information. All communication will be made through your email address registered in the online application system.

Check your email regularly in order not to miss any important message from the university.

Application Timeline

PhD applications are accepted and reviewed on a rolling basis throughout the year. Successful applicants may commence their studies on the first day of March, June, September, or December.

To ensure sufficient time for a thorough review and to facilitate a smooth onboarding process, applicants are strongly advised to submit a complete application by the following recommended dates for their intended entry point:

Intended Entry Point	Recommended Application Deadline
March Entry	15 December of the preceding year
June Entry	31 March
September Entry	30 June
December Entry	30 September

While we strive to process applications efficiently, submitting by the recommended deadline does not guarantee enrollment for that specific entry point. The actual start date will be confirmed in your official offer and is contingent upon the completion of all necessary reviews. The University reserves the right to adjust confirmed enrollment dates as necessary.

Student Life at Xi'an Jiaotong-Liverpool University

1. Xi'an Jiaotong-Liverpool University is located in Suzhou, a major city in East China 25 minutes by high-speed train to Shanghai. Suzhou is also an ancient city and a global hot-spot for research and innovation and is frequently ranked the most livable city in China.
2. As one of the top 10 most attractive cities in China to foreign talents, Suzhou combines a 2,500-year-old history with a drive to become one of the most modern cities in China, which has a population of 13 million and a GDP of more than 2 trillion RMB – far larger than those of many entire countries!
3. Please visit the Life in Suzhou page(<https://www.xjtlu.edu.cn/en/study/suzhou-life>) to explore more about food, shopping, sports and activities in Suzhou. Our international students Maya and Hun would like to show you around the North and the South Campuses where students study, eat and relax: https://www.youtube.com/watch?v=quc_QoqUyy8

PhD Programmes

PhD programs	Research Areas	Minimum English Requirements
Architecture*	Architectural Design and Architectural Studio Education; Architectural, Environmental or Construction Technology; Computer-Aided Architectural Design; Architectural History and Built Heritage Studies; Social and Cultural Study of the Built Environment	IELTS Academic 6.5 (min 6.0 in all skills) TOEFL iBT 88 (min L19, R19, W19, S20) PTE Academic 61 (min 59 in all skills)
Biological Science*	Cancer Biology; Cell Signaling; Molecular Microbiology; Neuroscience; Proteomics; Structural Biology; Bioinformatics	IELTS Academic 6.5 (min 5.5 in all skills) TOEFL iBT 88 (min L17, R17, W17, S19) PTE Academic 61 (min 59 in all skills)
Business	Econometrics; Finance; Marketing; Supply Chain Management and Logistics Management; Information Management and Information Systems; Human Resource Management; Innovation and Entrepreneurship; Accounting and Digitalization.	IELTS Academic 7 (min 6.5 in all skills) TOEFL iBT 100 (min L21, R21, W21, S23) PTE Academic 69 (min 61 in all skills)
Chemistry*	Sensors; Nanomaterial Photocatalysis; Organic Synthesis and Natural Products; Organic Electronic Materials; Supramolecular Chemistry; Molecular Electronics; Green Chemistry; Molecular Modelling; Advanced Materials and Smart Materials; Drug Delivery and Cancer Therapy; Coordination Chemistry and Crystal Engineering	IELTS Academic 6.5 (min 5.5 in all skills) TOEFL iBT 88 (min L17, R17, W17, S19) PTE Academic 61 (min 59 in all skills)
China Studies	Chinese Society; Chinese Politics and Economy; China's International Relations; Chinese History, Literature, and Culture	IELTS Academic 7.0 (min 6.5 in all skills) TOEFL iBT 100 (min L21, R21, W21, S23) PTE Academic 69 (min 61 in all skills)
Civil Engineering*	Structural Engineering; Construction Materials; Geotechnical Engineering; Hydraulics and Fluid Dynamics; Computational Models; Building Information Modeling (BIM); Construction and Waste Management	IELTS Academic 6.5 (min 5.5 in all skills) TOEFL iBT 88 (min L17, R17, W17, S19) PTE Academic 61 (min 59 in all skills)
Computer Science and Software Engineering*	Computer Science and Software Engineering; Artificial Intelligence (AI) and Big Data; Internet of Things (IoT); Intelligent Robotics and Related Technologies	IELTS Academic 6.5 (min 5.5 in all skills) TOEFL iBT 88 (min L20, R20, W20, S22) PTE Academic 61 (min 59 in all skills)
Electrical and Electronic Engineering*	Power Systems and Their Automation; Electrical Machinery and Appliances; Power Electronics and Electromechanics; High Voltage and Insulation Technology; Electronic Engineering; Theoretical Electrical Engineering and New Technologies; Intelligent Robotics and Related Technologies; Internet of Things (IoT) and Intelligent Systems	IELTS Academic 6.5 (min 5.5 in all skills) TOEFL iBT 88 (min L17, R17, W17, S19) PTE Academic 61 (min 59 in all skills)
English, Culture and Communication	Language and Linguistics; Literature; Translation and Interpreting; Digital and New Media; Film, Television, and Visual Culture; Journalism; Media and Communication; Media and Culture	IELTS Academic 7.0 (min 6.5 in all skills) TOEFL iBT 100 (min L21, R21, W21, S23) PTE Academic 69 (min 61 in all skills)

PhD programs	Research Areas	Minimum English Requirements
Environment Science*	Biodiversity – Mechanisms – Human Influences; Landscape Changes – Urbanization – Rural Farming; Community Ecology – Species Interactions – Trophic Dynamics; Soil Nutrients and Pollution – Interactions & Bioavailability; Air Pollution – Aerosol Processes – Air Quality – Human Health; Soils to Plants – Nutrition/Heavy Metals – Human Health; Pollutants Across Interfaces – Soil/Water/Air/Biota/Humans	IELTS Academic 6.5 (min 5.5 in all skills) TOEFL iBT 88 (min L17, R17, W17, S19) PTE Academic 61 (min 59 in all skills)
Public Health*	Environmental Epidemiology; Clinical Epidemiology; Social Epidemiology; Nutritional Epidemiology; Public Health Nutrition; Maternal and Child Nutrition; Dietary Assessment; Health Behavior; Health Effects of Atmospheric Pollutants; Sociology of Health and Illness	IELTS Academic 7.0 (min 6.0 in all skills) TOEFL iBT 100 (min L21, R21, W21, S23) PTE Academic 69 (min 61 in all skills)
Industrial Design*	X+ Experience and Interaction Design; S+ Social Innovation and M+ Future Making and Manufacture	IELTS Academic 6.5 (min 5.5 in all skills) TOEFL iBT 88 (min L17, R17, W17, S19) PTE Academic 61 (min 59 in all skills)
Education	Life-long Education and Professional Development; Child Development and Family Education; Student-centered Education and Educational Experiences; Managing and Leading Change Toward Future Education; Technology-driven Education Innovation; Cooperative and Work-integrated Education; Educational Technology and Innovation; Talent Ecosystem Strategy; Industrial Talent Skills and Vocational Education	IELTS Academic 6.5 (min 6.0 in all skills) TOEFL iBT 88 (min L19, R19, W19, S20) PTE Academic 61 (min 59 in all skills)
Mathematical Sciences*	Pure Mathematics; Physics; Applied Mathematics and Industrial Mathematics; Statistics; Financial Mathematics and Actuarial Mathematics	IELTS Academic 6.5 (min 5.5 in all skills) TOEFL iBT 88 (min L17, R17, W17, S19) PTE Academic 61 (min 59 in all skills)
International Relations	International Policies and Relations in Africa, America, Asia-Pacific, and Europe; International Law; International Political Economy; Critical Security Studies; International Development Studies; International Communication; Foreign Policy; Soft Power Studies; The Cold War (International History); Intelligence Studies; Ethnic Minorities Studies	IELTS Academic 7.0 TOEFL iBT 100 PTE Academic 69
Urban Planning and Design*	Infrastructure; Rural Revitalization; Urban Regeneration; Transport and City Planning; Smart Cities and Technology; Landscape and Urban Design; Environment and Public Health; Planning, Governance and Politics; Territorial Development and Restructuring; Real Estate, Economic Development and Regeneration	IELTS Academic 6.5 (min 5.5 in all skills) TOEFL iBT 88 (min L17, R17, W17, S19) PTE Academic 61 (min 59 in all skills)

Note: Applicants should hold bachelor's and master's degrees in relevant fields. For programmes marked with "*" in the list, exceptional candidate holding a Bachelor's degree only may be considered on an individual basis.

Contact Us

☎ **Phone:** +86 (0)512 81889001 ext. 3
 ✉ **Email:** DoctoralStudies@xjtlu.edu.cn
 🌐 **Official Website:** www.xjtlu.edu.cn



Scan the QR code for admission information

XJTLU Doctor of Education (EdD) Programme Prospectus

Overview

In an era of disruptive innovation in education, the Doctor of Education (EdD) programme at Xi'an Jiaotong-Liverpool University (XJTLU) provides a lifelong learning opportunity for those committed to education practice with passion and purpose. The programme supports students who aspire to synergise theory with practice, play a role in transforming education for the future, and explore possibilities for achieving such transformation in both the Chinese and global contexts. The programme adopts an interdisciplinary and cross-disciplinary approach in developing students' academic ability and professional expertise. This research-based, practice-oriented programme enables students to think critically about how to address challenges and how to play a leading role in shaping education for the future.

The EdD programme is designed for experienced leaders in various fields of education, including to basic education, vocational education, higher education, education enterprises, and education administration, to equip them with an international vision for the future of education, and enable them to take a step forward in their academic research and professional careers, and influence the change and practice of education.

Why EdD at XJTLU is your best choice



You will earn a doctorate from the University of Liverpool and get an internationally acclaimed education without travelling outside of China. This degree is also accredited by China's Ministry of Education.



You will plug directly into the XJTLU Academy of Future Education's innovation ecosystem. You'll collaborate and exchange ideas with top-tier education leaders and teachers from all sectors, fuelling your passion for pioneering the future of education.



You will get involved in XJTLU's extensive calendar of educational events and conferences. This is where you'll build a distinctive EdD lifelong learning community. After you graduate, you can remain an active member of the community, engaging in activities and research to continue growing your professional network.



Our modules are designed to tackle real-world educational issues. You will integrate theories and practices, and apply them through a cycle of discovery, analysis, reform, and reflection.



You will gain a powerful new perspective — a global strategic mindset, and the exceptional leadership skills to match, through close collaboration with academic staff and peers.



Our blended learning format is ideal for busy schedules. With just four in-person sessions a year, you can effectively balance your professional and academic life, making the most of your time.



Our cohort-based learning model helps you build a strong community of practice, creating a reciprocal flow of resources and a professional network that extends far beyond graduation.

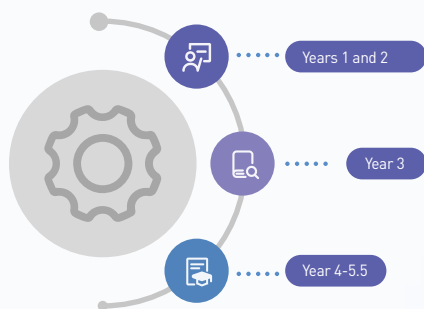


You will receive guidance from two experienced supervisors — one from XJTLU and one from the University of Liverpool. Both are internationally seasoned, giving you a uniquely broad global perspective on your research.

Programme Duration and Tuition Fees

Duration	Attendance	Entry Points	Language of Instruction	Tuition Fee
Normally 4.5 – 5.5 years (comprising 3 years of coursework and a minimum of 1.5 years for thesis).	Part-time	Autumn Start (September), Spring Start (February or March)	English	RMB 80,000 per year

Timetable



Coursework, online-onsite blended teaching and learning

Each semester features staggered, in-person residence learning with case studies in different domestic regions, complemented by continuous, yearlong online instruction and interaction deeply integrated into students' professional practice.

Research studies

In your third year at XJTLU, you will be supported in confirming a supervisor who shares your research interest at the end of the first semester, and a supervisor from the University of Liverpool at the end of the second semester. From there on, you will regularly engage with your supervisors until you complete your thesis.

Thesis

Effective communication with your supervisors is advised throughout this phase to ensure you meet the programme requirements.

Entry requirement

Academic requirement	Work experience/other requirements
A Master's degree is required. Applicants with a Master's degree in education, psychology, leadership, intercultural communication, or other relevant social science fields are preferred.	Applicants must have acquired at least four years of full-time experience in the education sector (or equivalent) and aspire to be leaders in education.

English language requirement

All applicants applying for the EdD programme must demonstrate that they are competent in the use of English language and satisfy the University's requirements. You will need to provide evidence of your level of English proficiency.

IELTS

IELTS academic 6.5 (with a minimum of 6.0 in each component), or

TOEFL iBT

TOEFL iBT 88 (with L 19 R 19 W 19 and S 20), or

PTE Academic

PTE Academic 61 (with minimum scores of 59 in each component).

*We accept IELTS One Skill Retakes if taken within 60 days of the original test. We do not accept MyBest Scores of TOEFL iBT.

Pre-Sessional English (PSE) Course

If you miss the English language requirements by 0.5 of an overall IELTS band but meet the language requirements for the Pre-sessional English (PSE) Course (including minimum component scores or equivalents), you may be accepted onto the PSE course subject to Programme Director's approval. Upon successful completion of the PSE course, you will be able to change your XJTLU EdD's offer letter to 'Unconditional' for the English level.

Contact

Phone: 0512-81889001 ext.3, 0512-85186439

QQ Group: 1063360272

Email: doctoralstudies@xjtlu.edu.cn

Official Website: www.xjtlu.edu.cn