

铸造未来：制度、经济和社会

FORGING THE FUTURE: INSTITUTIONS, ECONOMICS, AND SOCIETY

会议手册

Conference Handbook

2026年5月15日 9:00-18:00
MAY 15TH, 2026



会议地点：西交利物浦大学南校区商学院BSG02
LOCATION: BSG02, IBSS, SOUTH CAMPUS, XJTLU

主办方：西交利物浦大学国际关系系

ORGANIZER: XI'AN JIAOTONG-LIVERPOOL UNIVERSITY, DEPARTMENT OF INTERNATIONAL STUDIES



Xi'an Jiaotong-Liverpool University

西交利物浦大学

会议日程

Conference Programme



会议注册

Conference Registration



会议网址: <https://www.xjtlu.edu.cn/zh/events/2026/05/gongsuweilai>

Website: <https://www.xjtlu.edu.cn/en/events/2026/05/forging-the-future-politics-economics-and-society-in-global-public-policy>

会议地址: 西交利物浦大学苏州工业园区校区国际商学院

Venue: Xi'an Jiaotong-Liverpool University, SIP Campus, IBSS Building

主办单位: 西交利物浦大学

Organizer: Department of International Studies at Xi'an Jiaotong-Liverpool University

组委会成员: Francesco Macheda, 孙芳露, 龚丽娜, 何恬.

Organizing Committee Members: Francesco Macheda, Fanglu Sun, Lina Gong, Tian He.





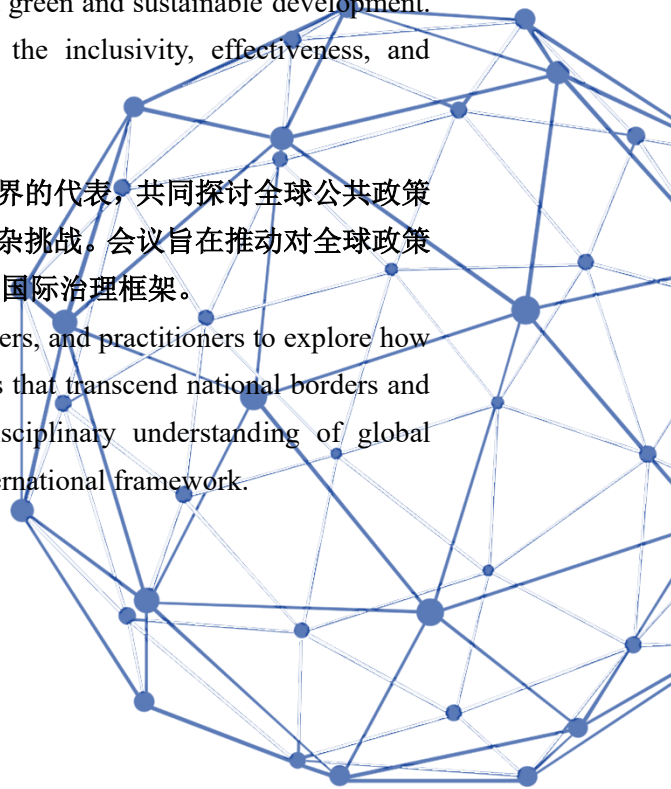
会议主题 Conference Theme

在全球深刻而快速变革的背景下，国际社会正见证着安全与合作、知识与技术转移、绿色与可持续发展等领域中新兴跨境动态的涌现。这些趋势凸显了提升全球政策机制在包容性、有效性与合法性方面所面临的迫切需求。

Against the backdrop of profound and rapid global transformations, the international community is witnessing the emergence of new cross-border dynamics in areas such as security and cooperation, knowledge and technology transfer, and green and sustainable development. These trends underscore the urgent need to enhance the inclusivity, effectiveness, and legitimacy of global policy mechanisms.

本次会议将汇聚来自学术界、政策制定领域与业界的代表，共同探讨全球公共政策如何应对超越国界、难以通过单边路径加以解决的复杂挑战。会议旨在推动对全球政策制定过程的多学科理解，助力构建更加公正与高效的国际治理框架。

This conference brings together scholars, policymakers, and practitioners to explore how global public policy can tackle unprecedented challenges that transcend national borders and defy unilateral solutions. We aim to foster a multidisciplinary understanding of global policymaking to shape a more equitable and effective international framework.





本次大会所有会场均位于南校区 IBSS 楼

All conference sessions are located in the IBSS Building, South Campus





上午会场安排 MORNING VENUES

08:15-09:00 签到 Registration: BSG02

8:45-9:00 集体合影 Group Picture

09:00-10:10 开幕及主旨演讲 Opening & Keynotes: BSG02

10:10-11:00 圆桌论坛 Round Table: BSG02

11:00-11:30 茶歇 Coffee Break: 公共区域 Common Area

11:30-12:30 平行分论坛 Parallel Panels:

分论坛 1 Panel 1: BSG40

分论坛 2 Panel 2: BSG54

分论坛 3 Panel 3: BSG33

下午会场安排 AFTERNOON VENUES

13:30 - 14:30 主旨演讲 Keynote: BSG02

14:30-14:45 茶歇 Coffee Break: 公共区域 Common Area

14:45-16:15 平行分论坛 Parallel Panels:

分论坛 4 Panel 4: BSG40

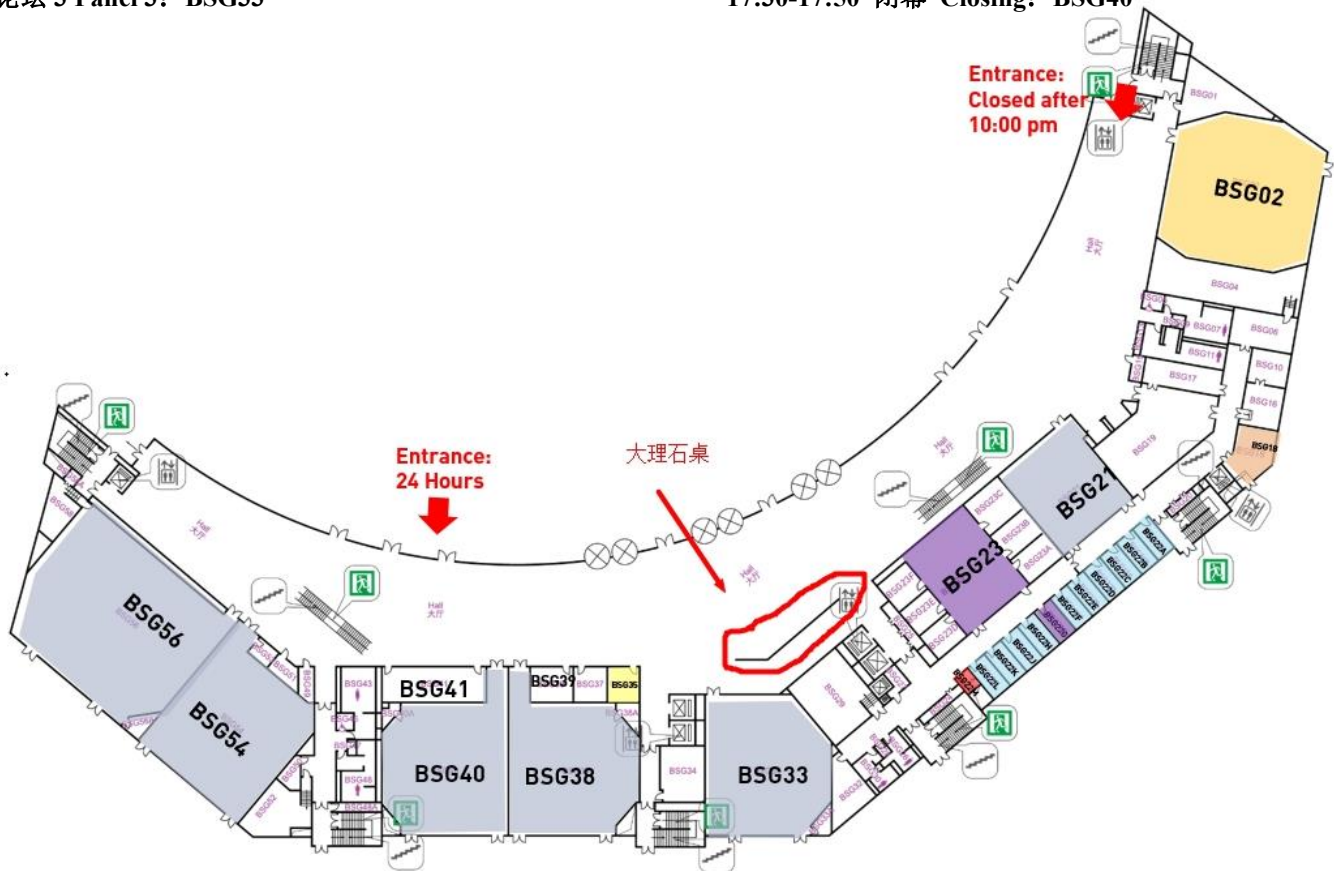
分论坛 5 Panel 5: BSG54

分论坛 6 Panel 6: BSG21

16:15-16:30 茶歇 Coffee Break: 公共区域 Common Area

16:30-17:30 主编对话 Bridging Scholarship: BSG40

17:30-17:50 闭幕 Closing: BSG40



GF of IBSS Building (BS)



会晤联络 Contacts

事项 Item	联系人 Contact Info
Logistics, Accommodation, and Transportation	Wenyuan.Yu@xjtlu.edu.cn
Academic-related questions	Lina.Gong@xjtlu.edu.cn
Academic-related questions	Fanglu.Sun@xjtlu.edu.cn
Academic-related questions	Tian.He@xjtlu.edu.cn
Academic-related questions	Francesco.Macheda@xjtlu.edu.cn



会议议程 Agenda

Time	Event			Venue
8:15–9:00	Registration			BSG02
8.45–9:00	Group Picture			
9:00–09:10	Opening Remarks			
9:00–09:05	Dr. Francesco Macheda, Head of Department of International Studies, XJTLU			BSG02
9:05–09:10	Professor Ruan Zhoulin, Vice President for Academic Affairs, XJTLU			
09:10–10:10	Keynote Speeches Professor Robert Wade, London School of Economics and Political Science, “The Uncertain Return of Industrial Policy” Professor David Daokui Li, Tsinghua University, “Government and Economics”			BSG02
10:10-11:00	Round Table: “Aligning Governments and Markets in a Changing Global Order” Moderator: Dr Lina Gong, XJTLU Professor Robert Wade, LSE Professor Daokui Li, Tsinghua University Professor Adam Cross, XJTLU Professor Ji You, XJTLU			BSG02
11:00–11:30	<i>Coffee Break & Student Poster Exhibition</i>			
11:30–12:30	Panel 1 (BSG40)	Panel 2 (BSG54)	Panel 3 (BSG33)	
Panel 1: Great Power Competition and Emerging Cold War Dynamics Moderator: Professor You Ji				
11:30-11:45	The Cold War Mentality Must Be Overthrown (Ronghua Wang, Former Chinese Ambassador to Iceland)			
11:45-12:00	Equitable World Development, Harmony and the End of Western Hegemony (Michael Dunford, Emeritus Professor, University of Sussex)			BSG40
12:00-12:15	From Engagement to Tech War: Big Tech in the Transformation of US-China Relations (Hongzhou Zhang, Assistant Professor, Nanyang Technological University)			
12:15-12:30	The Strategic Posture Typology: Disaggregating Intent from Intensity in China’s South China Sea Posture (Wushuang Yi, Postdoctoral Fellow, Tsinghua University)			
12:30-12:45	Discussion, Q&A			
Panel 2: Security, Strategy, and Geopolitical Risk Moderator: Dr. Lina Gong				
11:30-11:45	Security, Sovereignty, and Violent Unilateralism: West Asia and the Multipolar Dilemma (Matteo Capasso, Professor, Northwest University)			BSG54
11:45-12:00	Regional Crisis Governance Under Deep Uncertainty: Hormuz Access Regimes, Infrastructure Coercion, and Escalation Off-Ramps in the Israel–Iran–US Theatre (Mohsen Solhdoost, Assistant Professor, XJTLU)			
12:00-12:15	Just Rhetoric? Assessing China-UK Cooperation in Global Governance (Biao			



	Zhang, Associate Professor, Chinese University of Political Science and Politics)			
12:15-12:30	Discussion, Q&A			
Panel 3: Global Governance, Representation, and Agency				
Moderator: Dr. Afa'Anwi Che				
11:30-11:45	Power Orchestrates: How Leadership Shapes National Representation in International Organisations (Tianhan Gui, Associate Professor, Tsinghua University)			BSG33
11:45-12:00	African Agency and the Global Aid Puzzle: Beyond the Generosity Narrative (Obert Hodzi, Associate Professor, University of Liverpool)			
12:00-12:15	From Individual Distrust to Institutional Delegitimation: the Case of the UNFCCC COP28 President (Hai Yang, Assistant Professor, University of Macau)			
12:15-12:30	Discussion, Q&A			
12:30-13:15	<i>Lunch</i>			
13:30-14:30	Keynote Speeches Professor Jeffrey Sachs, Columbia University, "The Future of a Multipolar World"			BSG02
14:30-14:45	<i>Coffee Break & Student Poster Exhibition</i>			
14:45-16:15	Panel 4(BSG40)	Panel 5 (BSG54)	Panel 6 (BSG21)	
Panel 4: Inequality, Development, and Global Political Economy				
Moderator: Dr. Filippo Giurlando				
14:45-15:00	Manifestations of Contemporary Neocolonialism and Countermeasures (Enfu Cheng, Professor, Chinese Academy of Social Sciences)			BSG40
15:00-15:15	Geopolitical Risk Exposure upon the Chinese Defense Industry Companies: Co-Movement Evidence from Wavelet-based Granger Causality Tests (Yun Liu, Associate Professor, XJTLU)			
15:15-15:30	The Technological Financial Military Linkage and the Reproduction of Inequality between Countries (Leonardo Bargigli, Visiting Scholar at XJTLU and Professor, University of Florence)			
15:30-15:45	The Rise of the U.S. Investor State: State Capitalist Impulses under Changing Global Political Economy (Shidai Zhang, PhD Candidate, University of Cambridge)			
15:45-16:15	Discussion, Q&A			
Panel 5: Infrastructure, Finance, and the New Geopolitics of Dependency				
Moderator: Dr. Robert Pauls				
14:45-15:00	The Rise of China's Techno-Resource Security State in the Rare Earth Sector (Tian He, Assistant Professor, XJTLU)			BSG54
15:00-15:15	How China's Currency Swap Arrangements Can Be Alternatives to IMF Lending? (Wei Li, Associate Professor, Beihang University)			
15:15-15:30	Enmeshed Nationalism and the Making of Cross-Border Digital Markets: Alibaba in Indonesia (Karl Yan, Assistant Professor & Xiaojing Qin, PhD candidate, CUHKSZ)			
15:30-15:45	The Essential Characteristics and Practical Pathways of the New International Economic Order (Qun Wei, Ph.D candidate, School of Marxism, Chinese Social			



	Science University)	
15:45-16:15	Discussion, Q&A	
Panel 6: Climate and Technology Governance and Resilience in a Changing Global Order		
Moderator: Dr. Mohsen Solhdoost		
14:45-15:00	Weathering the Heat: Newborn Health and Climate Resilience Lessons from South Korea (Gi Khan Ten, Assistant Professor, XJTLU)	BSG21
15:00-15:15	Persistence in Chinese Climate Policy Uncertainty (Marc Gronwald, Senior Associate Professor, XJTLU)	
15:15-15:30	Climate diplomacy in the BRICS: A documentary analysis of an emerging climate agenda (Niklas Weins, Assistant Professor, XJTLU)	
15:30-15:45	Network Ecosystem Construction in AI Application Scenarios (Shuoying Chen, Professor, Chinese Academy of Social Sciences)	
15:45-16:15	Discussion, Q&A	
16:15-16:30	<i>Coffee Break & Student Poster Exhibition</i>	
16:30-17:30	Bridging Scholarship: A Conversation with Journal Editors Moderator: Dr Fanglu Sun, XJTLU Yijia Jing, Editor-in-Chief of Journal of Governance and Global Public Policy Li Shao, Associate Editor of Asian Journal of Comparative Politics Shuoying Chen, Editor-in-Chief of International Critical Thought Biao Zhang, Associate Editor of Asian Europe Journal	BSG40
17:30-17:50	Concluding Remarks & Launch of the Master Programme of Global Public Policy and International Relations (GPPIR)	BSG40
17:30-17:35	Dr. Francesco Macheda, Head of Department of International Studies, XJTLU	
17:35-17:45	Dr. Tian He, Programme Director of GPPIR, XJTLU	
17.45-17.50	Professor Xiaoling Zhang, Dean of the School of Social Sciences and Humanities, XJTLU	



主旨演讲 Keynote Speeches



Jeffrey Sachs

Jeffrey Sachs 因其在应对复杂全球性挑战方面提出的大胆且有效的策略而广受认可，这些挑战包括摆脱极端贫困、应对人为气候变化、处理国际债务与金融危机，以及推动国家经济改革。Sachs 教授现任哥伦比亚大学可持续发展中心主任，同时担任联合国可持续发展解决方案网络(Sustainable Development Solutions Network)主席、联合国发展宽带委员会(UN Broadband Commission for Development)委员，以及联合国秘书长安东尼奥·古特雷斯(António Guterres)可持续发展目标(SDG)倡导者。他两次被《时代》杂志评为全球百大最具影响力人物之一。

Jeffrey Sachs is widely recognized for bold and effective strategies to address complex challenges including the escape from extreme poverty, the global battle against human-induced climate change, international debt and financial crises, and national economic reforms. Prof. Sachs serves as the Director of the Center for Sustainable Development at Columbia University. He is President of the UN Sustainable Development Solutions Network, Commissioner of the UN Broadband Commission for Development, and SDG Advocate for UN Secretary General António Guterres. He was twice named among Time magazine's 100 most influential world leaders.

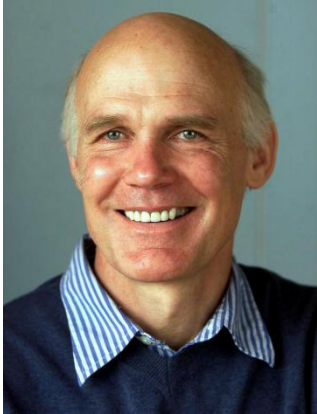


李稻葵

David Daokui Li

李稻葵是清华大学经济管理学院曼斯菲尔德·弗里曼经济学讲席教授、清华大学经管学院金融系主任、清华大学苏世民学者项目主任。作为中国政治经济学领域的重要学者，李稻葵曾于 2016 年至 2018 年担任中国人民银行货币政策委员会委员，并曾任中国人民政治协商会议委员。2013 年，他被任命为清华大学苏世民学者项目的创始院长。李稻葵著有《China's World View: Demystifying China to Prevent Global Conflict》，并曾担任《Journal of Comparative Economics》主编。其近期研究主要关注中国地方政府债务问题。此前，他曾在密歇根大学安娜堡分校、斯坦福大学胡佛研究所及香港科技大学任教或从事研究工作。

David Daokui Li is the Mansfield Freeman Professor of Economics and director of the Center for China in the World Economy at Tsinghua University's School of Economics and Management. A prominent voice on China's political economy, Li served as a member of the Monetary Policy Committee of the People's Bank of China from 2016 to 2018 and as a member of the Chinese People's Political Consultative Conference. He was appointed the founding dean of Tsinghua's Schwarzman Scholars program in 2013. Li is the author of China's World View: Demystifying China to Prevent Global Conflict and has served as editor of the Journal of Comparative Economics. His recent research has examined local government debt in China. He previously held academic positions at the University of Michigan-Ann Arbor, Stanford University's Hoover Institution, and the Hong Kong University of Science and Technology.



Robert H. Wade

Robert H. Wade 是政治经济学家和发展研究学者，现任伦敦政治经济学院国际发展系全球政治经济学教授。作为全球发展研究领域的杰出学者，韦德的研究涵盖经济增长、国际与比较政治经济学、产业政策以及发展型国家等多个方向。他最为人所知的著作是《Governing the Market: Economic Theory and the Role of Government in East Asia's Industrialization》（1990），该书于 1992 年荣获美国政治学会“最佳政治经济学著作奖”。其研究对挑战新自由主义正统观念、阐明国家干预在东亚发展中的核心作用具有重要影响。2008 年，韦德与 José Antonio Ocampo 共同获得列昂惕夫奖（Leontief Prize），以表彰其在经济理论方面对现实问题的贡献以及对建设公正与可持续社会的推动。

Robert H. Wade is a political economist and development scholar, currently Professor of Global Political Economy at the London School of Economics' Department of International Development. A preeminent scholar of global development, Wade's research spans economic growth, international and comparative political economy, industrial policy, and the developmental state, among others. He is best known for his influential book *Governing the Market: Economic Theory and the Role of Government in East Asia's Industrialization* (1990), which won the American Political Science Association's award for Best Book in Political Economy in 1992. His work has been instrumental in challenging neoliberal orthodoxy and demonstrating the central role of state intervention in East Asian development. In 2008, Wade was jointly awarded the Leontief Prize with José Antonio Ocampo for contributions to economic theory addressing contemporary realities and supporting just and sustainable societies.



交通 Transportation

从火车站（苏州市区）至西交利物浦大学

- 从苏州园区站出发

乘坐地铁 8 号线，在松涛街站下车，步行约 10 分钟即可抵达西交利物浦大学南校区。

- 从苏州站出发

乘坐地铁 2 号线，换乘 8 号线，在松涛街站下车，步行约 10 分钟即可抵达西交利物浦大学南校区。

- 从苏州北站出发

乘坐地铁 2 号线，换乘 8 号线，在松涛街站下车，步行约 10 分钟即可抵达西交利物浦大学南校区。

From the Railway Station (in Suzhou) to XJTLU

- **From Suzhou Industrial Park Station**

Take metro line 8 and get off at Songtao Street Station, walk for about 10 minutes to XJTLU South Campus.

- **From Suzhou Railway Station**

Take metro line 2, transfer to line 8, and get off at Songtao Street Station, walk for about 10 minutes to XJTLU South Campus.

- **From Suzhoubei Railway Station**

Take metro line 2, transfer to line 8, and get off at Songtao Street Station, walk for about 10 minutes to XJTLU South Campus.



从机场（无锡及上海）至西交利物浦大学/苏州

- 乘坐火车

乘坐火车抵达苏州各车站后请参考以上火车站路线

- 乘坐机场巴士

机场	时长	参考价格 (人民币)	位置
苏南硕放国际机场	1 小时	50	机场出口
上海虹桥国际机场	1.5-2 小时	90	P8 停车场
上海浦东国际机场	2.5-3 小时	120	浦东机场长途汽车站（1 号航站楼 2 楼）

- 乘坐出租车

机场	时长	参考价格 (人民币)
苏南硕放国际机场	1 小时	100-200
上海虹桥国际机场	1-1.5 小时	120-300
上海浦东国际机场	2-2.5 小时	200-400

**From the Airport (in Wuxi and Shanghai) to XJTLU/Suzhou**

- **By Train**

Please refer to the information above after you arrive in Suzhou.

- **By airport bus to Suzhou**

Airport	Time duration	Reference price	Location to take bus
Sunan Shuofang International Airport	1 Hour	50	Airport exit
Shanghai Hongqiao International Airport	1.5-2 Hours	90	P8 Parking Lot
Shanghai Pudong International Airport	2.5-3 Hours	120	Pudong Airport Coach Station (Floor 2, Terminal 1)

- **By Taxi**

Airport	Time duration	Reference price (CNY)
Sunan Shuofang International Airport	1 Hour	100-200
Shanghai Hongqiao International Airport	1-1.5 Hours	120-300
Shanghai Pudong International Airport	2-2.5 Hours	200-400

注意：以上信息仅供参考

Note: The above information is for reference only.



住宿

- 酒店名称:苏州工业园区独墅湖戴斯温德姆酒店
- 酒店官网: 苏州工业园区独墅湖戴斯温德姆酒店, 苏州 <https://days-by-wyndham-suzhou-dushu-lake.suzhouhotels24.com/zh/>
- 地址: 苏州工业园区月亮湾路 10 号慧湖大厦 3 幢
- 酒店距我校园约 10 分钟车程。会议当天将安排接驳巴士, 往返于酒店与校园之间, 接送所有演讲嘉宾。

地图方向

Huihu Building, 10 Moon Bay, Suzhou, 215009





Accommodation

- **Wyndham Suzhou Dushu Lake**
- Link: Wyndham Suzhou Dushu Lake <https://days-by-wyndham-suzhou-dushu-lake.suzhouhotels24.com/zh/>
- Address: No. 3, Huihu Building, 10 Moon Bay Road, Suzhou Industrial Park (苏州地址: 苏州月亮湾路 10 号慧湖大厦 3 幢)
- **The hotel is approximately 10 minutes by car from our campus. A shuttle bus will be provided to transport all presenters between the hotel and campus on the conference day.**

地图方向

Huihu Building, 10 Moon Bay, Suzhou, 215009





天气

会议期间苏州天气预计温暖，气温介于 17°C 至 28°C 之间。

时区: 东八区 GMT+8

网络连接

西交利物浦大学校园内提供 Wi-Fi 服务。参会者可通过访客登录方式连接西浦校园网络。

- Wi-Fi 名称: XJTLU
- 连接方式: 选择该 Wi-Fi 后，设备将自动弹出登录页面。请选择“Visitor Login（访客登录）”选项并按照指引操作以接入网络。

饮用水

不建议直接饮用中国自来水，请饮用瓶装水。

紧急联系电话

- 报警: 110
- 火警: 119
- 医疗急救/救护车: 120
- 交通事故: 122

会议地点

西交利物浦大学南校区西浦国际商学院（IBSS）

地址: 苏州工业园区崇文路 8 号。

着装要求: 商务正装

论文展示

- **工作语言:** 本次会议的工作语言为英语。所有宣讲及配套幻灯片材料均须使用英语。
- **宣讲时长:** 每位宣讲人分配有 15 分钟的展示时间。

餐饮与茶歇

会议期间将提供茶歇、午餐及晚餐。



Weather

Weather in Suzhou is expected to be warm during the event. The temperatures are expected to range from 17°C to 28°C.

Time zone: GMT+8

Internet Access

Wi-Fi service will be available on XJTTLU campus. Participants can connect to the campus Wi-Fi network provided by XJTTLU via the Visitor Login method.

- Wi-Fi Name: XJTTLU
- How to Connect: After selecting the Wi-Fi, a login page should automatically open on your device. Please select the "Visitor Login" option and follow the instructions to gain access.

Water

It is not recommended to consume water from the tap in China. Bottled water is recommended.

Emergency Contact Numbers

- Police:110
- Fire:119
- Ambulance/Medical Emergency:120
- Traffic Accident:122

Conference Venue

International Business School Suzhou (IBSS, 西浦国际商学院), South Campus, Xi'an Jiaotong- Liverpool University (XJTTLU), No. 8, Chongwen Road (崇文路 8 号), Suzhou Industrial Park, Suzhou.

Dress Code: Office attire

Paper Presentation

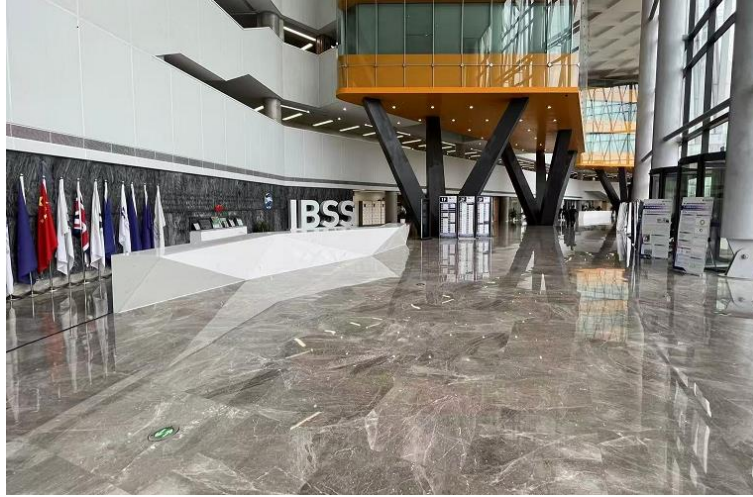
- Working Language: The working language of the conference is English. All presentations and corresponding slide materials must be delivered in English.
- Presentation: Each presenter is allocated 15 minutes for their presentation.



Meals and Refreshments

Coffee breaks, lunch and dinner will be provided at the common area during the conference.

Meals, Refreshments and Registration





The Organizer

The Department of International Studies at Xi'an Jiaotong-Liverpool University was established in 2018. Sitting in the School of Humanities and Social Sciences, it aims to be a leading provider of international studies education and research. Our growing department is staffed by research-active scholars from all over the world, including Australia, Cameroon, China, Italy, Germany, Canada, South Korea, USA, Russia, and the United Kingdom.

The Department of International Studies actively bridges the social sciences with emerging technologies. All programmes integrate tech-driven competencies into their curricula, equipping students to address real-world analytical challenges in fields such as international relations, global business, and transnational affairs. The department has forged strategic partnerships and collaborations with Suzhou—a hub for global investment and innovation. These partnerships provide critical support to develop international case studies grounded in real-world contexts and share high-tech learning resources tailored to social science applications. This synergy ensures students gain the skills needed for high-demand careers in an increasingly digital and interconnected global landscape.

The department teaches modules of BA and MA in International Relations, and an MA in International Business and Global Affairs, and welcomes students from all over the world. Please read further about our research, teaching, and programmes by exploring this site.

主办方

西交利物浦大学国际关系系成立于 2018 年。隶属于人文社会科学学院，本系致力于成为国际研究教育和研究的领先提供者。我们不断发展壮大的系部拥有一支来自世界各地、科研活跃的学者队伍，包括来自澳大利亚、喀麦隆、中国、意大利、德国、加拿大、韩国、埃及、俄罗斯和英国的学者。

国际关系系积极架起社会科学与新兴技术之间的桥梁。所有项目都将技术驱动的能力融入课程体系，培养学生应对国际关系、全球商务和跨国事务等领域现实世界分析挑战的能力。本系与苏州——全球投资与创新中心——建立了战略合作伙伴关系。这些合作为开发基于真实情境的国际案例研究提供了重要支持，并分享了专为社会科学应用定制的高科技学习资源。这种协同效应确保学生能够在日益数字化和相互关联的全球环境中获得高需求职业所需的技能。本系负责教授国际关系文学学士和文学硕士项目，以及国际商务与全球事务文学硕士项目，欢迎来自世界各地的学生。请通过浏览本网站进一步了解我们的研究、教学和项目。

本系教授[国际关系文学学士和文学硕士项目](#)，以及[国际商务与全球事务文学硕士项目](#)，欢迎世界各地的学生。请通过浏览本网站进一步了解我们的研究、教学和项目。



BA 国际事务与国际关系

International Relations

国际关系领域在过去三十年经历了翻天覆地的变化，中国的发展无疑是其中最为显著的变化之一。随着国际秩序的演变和中国的持续崛起，我们迫切需要培养具有深厚专业知识、技能和广阔国际视野的人才，以深刻理解这些复杂的进程。本专业致力于教授学生国际关系的专业知识和技能，并深化他们对国际事务的理解，同时培养具有企业家精神和管理能力的人才，并促进世界与中国的互相了解。本专业通过跨学科的课程设置，深入探讨全球事务中政治、经济和法律问题，分析国家（及地区）、国际组织、非政府组织和跨国公司在国际框架下的关系。此外，本专业课程还包括一学期的海外学习机会，学生可以自主选择前往与学院有合作的海外院校，这不仅拓宽了学生的国际视野，也为他们提供了宝贵的跨文化交流和学习经历。

更多信息请访问：<https://www.xjtlu.edu.cn/zh/study/undergraduate/international-relations>

In the past three decades, the international relations field has witnessed profound changes in China's growth. As international order shifts and China's development continues, the world needs more talented professionals with specialised knowledge and skills, as well as international perspectives, to explore these processes. The BA International Relations programme aims to deepen the knowledge and understanding of international affairs and China's engagement with the world. It cultivates the entrepreneurial and managerial leaders of the future who will bring China to the world and the world to China. Through the interdisciplinary study of politics, economics, law, and global affairs, the programme examines the relationships of countries and regions, international organisations, nongovernmental organisations, and multinational corporations within the international framework. While the programme focuses on China's interactions with the world, all students will spend one semester abroad in the country of their choice during their studies.



More information at: <https://www.xjtlu.edu.cn/en/study/undergraduate/international-relations>



MA 国际关系硕士

International Relations

国际关系硕士专业通过为学生提供专业知识、提升研究与使用分析工具的能力，培养学生对国际关系的深入了解，从而充分胜任各类公、私机构的相关工作。本专业旨在让学生将所学知识应用于分析和评估国际关系事务，例如全球治理、国际关系史、外交政策、国家间合作、国际和地区组织的职能、冲突、战争、安全和干预、政治经济与全球化，以及区域一体化等。本专业将为学生提供学术和专业发展上的支持，让学生作为国际关系学者、分析人员或政策制定者，关注中国在世界舞台上的角色演变。

更多信息请访问：<https://www.xjtlu.edu.cn/en/study/masters/international-relations>

The MA in International Relations equips you with the knowledge, research skills and analytical tools to work at an advanced level, gain profound understanding of international relations, and train you to follow careers in both public and private sectors. The programme is designed so you can apply acquired knowledge to analyse and evaluate topics such as global governance, the history of international relations, foreign policy, inter-state cooperation, the functions of international and regional organisations, conflict, war, security and intervention, political economy and globalisation, and regional integration. You will be supported in your academic and professional development as a scholar, analyst or policy maker in the discipline of international relations, with a focus on China's evolving role in the world.

More information at: <https://www.xjtlu.edu.cn/en/study/masters/international-relations>





MA 国际商务与全球事务硕士

International business and Global Affairs

根植于国际关系系，部分课程将由获得国际高等商学院协会（AACSB）和欧洲质量发展体系（EQUIS）共同认证的西浦国际商学院（IBSS）授课。本专业旨在培养当今和未来的管理者及有潜力的商业领袖，并帮助他们在一个越来越充满不确定性、动荡与变化的世界中获得成功。本创新性专业旨在培养学生的专业知识、理解能力、领导能力、分析技能、使用决策工具的能力和战略远见，以便有效在这个充满风险、日益复杂和挑战层出的世界中管理跨国人员、组织和业务往来。

更多信息请访问：<https://www.xjtlu.edu.cn/zh/study/masters/international-business-and-global-affairs>

Parented by the Department of International Studies, and with modules delivered by the AACSB and EQUIS-accredited International Business School Suzhou (IBSS), the Master of Arts (MA) in International Business and Global Affairs aims to develop current and future managers and potential business leaders who are able to work successfully in a world increasingly characterised by



uncertainty, volatility and change. This innovative programme is designed to equip students with the knowledge, understanding, leadership abilities, analysis skills, decision-making tools and strategic vision needed to effectively manage people, organisations and business dealings across national borders in an increasingly risky, complex and challenging world.

More information at: <https://www.xjtlu.edu.cn/en/study/masters/international-business-and-global-affairs>

✉ internationalstudies@xjtlu.edu.cn

🌐 <https://www.xjtlu.edu.cn/en/study/departments/school-of-humanities-and-social-sciences/international-studies>

📱 Scan below QR codes to view the website and follow our WeChat Public Accounts

