

PROGRAMME OVERVIEW

DEGREE PROGRAMME
MSc Multimedia Telecommunications

AWARDING INSTITUTION
University of Liverpool, UK
The full-time programme is also recognised by the Chinese Ministry of Education.

TUITION FEE
RMB 90,000

PROGRAMME DURATION
18 months, full time

SCHOLARSHIPS
Scholarships of up to 50% are available for our full-time programmes. For details, please visit:
www.xjtlu.edu.cn/en/study-with-us/admissions/scholarships

ALUMNI DISCOUNT
If you are a graduate of XJTLU, the University of Liverpool or Xi'an Jiaotong University, you will automatically receive a discount of 20% of the tuition fee.

ENTRY REQUIREMENTS

UNDERGRADUATE BACKGROUND
An undergraduate degree (UK 2:1 or equivalent) in a relevant field such as telecommunication engineering, electronic science and technology, electrical engineering, and computer science and technology.

UK
Upper second class (2:1) honours

CHINA
1st tier universities: 75% or above
2nd tier universities: 80% or above
Chinese applicants are not required to take the Ministry of Education postgraduate entrance exam.

NORTH AMERICA
3.0 Cumulative GPA (out of 4) or
3.2 Cumulative GPA in the final two years of your undergraduate programme

OTHER REGIONS
Equivalent academic qualifications

ENGLISH REQUIREMENTS
IELTS: 6.0 (minimum of 5.0 in all sections) / TOEFL iBT: 80 (or equivalent)

If you miss the English language requirements by 0.5-1.0 of an IELTS band, or a similar number for other English language exams, you can be admitted to the programme after successful completion of our four- or six-week intensive English preessional course.

The University reserves the right to modify programmes at any time in response to unforeseen circumstances, feedback and review. The University also reserves the right to not offer programmes with low enrolments. For the latest information, please visit our website.

HOW TO APPLY

PREPARING TO APPLY

Make sure you have prepared the following documents to upload onto the application system. Documents required for application include:

- Certificates of education qualifications and transcripts, translated into English
- Personal statement
- Two letters of reference
- Certificates of English language qualifications such as IELTS, TOEFL or other acceptable English qualifications (where required)
- Scholarship statement (if applying for the XJTLU scholarship)

We reserve the right to request additional documents or an interview to assess your academic qualifications.

APPLY ONLINE

All applicants should apply via our online application system:

1. Choose your programme from www.xjtlu.edu.cn/en/find-a-programme
2. Click/tap 'Apply' on the programme page
3. Create an account or log in to your existing account
4. Complete your application.

Upload the required documents (mentioned above) to the corresponding fields. You may log-in to view your application form at any time and upload any remaining supporting documents.

After submitting your application successfully, you will receive an acknowledgement email from pgadmissions@xjtlu.edu.cn. If you do not receive the confirmation email or experience any difficulties during the online application process, please send us an email with specific details of the problem.

www.xjtlu.edu.cn/en/study-with-us/admissions/how-to-apply

APPLICATION DEADLINES

- 30 June 2018 (International applicants)
- 31 July 2018 (Chinese nationals)

MSc

MULTIMEDIA

TELE-

COMMUNICATIONS

多媒体通信硕士

多媒体通信硕士

人工智能 (AI) 在我们的日常生活中扮演越来越重要的角色, 从自动驾驶到AlphaGo。在不久的将来, 许多传统工作将被装备有AI技术的机器人所取代。该专业涵盖了一些重要的AI技术, 包括深度学习、计算机视觉和图像视频处理。

在日益壮大的通信行业中, 多媒体及无线通信正蓬勃发展。4G和5G移动网络等新标准使诸多应用应运而生, 如移动网络的三方服务、数字电视、视频流、互动游戏、导航服务、应急和医疗应用等。从技术层面上讲, 将这些多媒体应用和服务高效地投入新兴和多样的无线网络中是一种挑战。为了应对这项挑战, 工程师们需要深入了解无线网络和多媒体技术。

该专业旨在培养学生对无线网系统和人工智能技术的认识, 涵盖了无线通信中声音、图像、视频等多媒体数据处理和应用的先进课题。同时, 本专业也涵盖了用于多媒体数据理解的人工智能技术, 如深度学习。

学生将获得:

- 国际认可的硕士研究生学位;
- 卓越的研究设施和先进的实验仪器;
- 就业市场所需的前沿技术;
- 众多参与各类国家或行业资助项目的机会。

就业

本研究生专业毕业生将受益于学校提供的大量研究与应用机会, 掌握就业市场所需的各种技能。毕业生将拥有就业的必要技术, 可进入最前沿的图像与视频通信领域、人工智能和计算机视觉领域工作, 也能胜任多媒体系统工程师、多媒体系统及信息技术顾问、移动项目经理、无线网及移动通信顾问和通信业中的经理和项目负责人等职位。



扫描二维码
获取更多专业信息

专业负责人
jimmin.xiao@xjtlu.edu.cn

咨询邮箱
pgenquiries@xjtlu.edu.cn

在线申请
www.xjtlu.edu.cn/zh/find-a-programme/
masters/msc-multimedia-telecommunications

课程

高级信号处理
图像和视频处理
深度学习和计算机视觉
数据通信和通信网络
移动通信
多媒体通信
编码和密码学
项目管理
论文写作

附加学习活动是完成研究生学业、获得学位的组成部分。附加学习活动的学时会平均分配在学期期间, 一般为每学期200小时。非全日制制硕士课程的附加学习活动一般为每学期100到150小时。

学位颁发机构

英国利物浦大学
该硕士研究生学位 (全日制) 获中国教育部认可。

学制

18个月 (全日制)

学术背景

- 本一类大学: 75%或以上
 - 本二类大学: 80%或以上
- 注: 不需要参加全国研究生入学考试。

本科为通信工程、电子科学与技术、电气工程、计算机科学与技术等相关专业。

英语要求

雅思: 6.0及以上 (且各项成绩均不低于5.0)
托福iBT: 80

如果你的IELTS成绩比申请要求低0.5-1.0分之内 (TOEFL等其它英语水平测试同理), 可以选择参加西交利物浦大学组织的为期4-6周高强度的学前英语课程, 成功通过后将获得入学。

费用

90,000元人民币, 全日制18个月

奖学金

西交利物浦大学为录取者提供充裕奖学金, 优秀学生可获得高达50%的学费优惠。如需申请西交利物浦大学研究生项目奖学金, 请在申请材料中附奖学金申请书, 并阐明申请优势与获奖理由。
www.xjtlu.edu.cn/zh/study-with-us/admissions/scholarships

2018学年申请截止日期

国际学生: 2018年6月30日
中国学生: 2018年7月31日

MSc MULTIMEDIA TELECOMMUNICATIONS

Artificial intelligence (AI) is playing an increasingly important role in our everyday lives and it is believed that many traditional jobs will be replaced by machines equipped with AI technologies. Some important AI technologies will be covered in this programme, including deep learning, computer vision, and image and video processing.

Multimedia and wireless communications is a rapidly growing area in the booming communications industry. New standards such as 4G and 5G for mobile networking enable applications including triple services for mobile networks, digital television, video streaming, interactive gaming, navigation services, and emergency and healthcare applications. It is technologically challenging to deliver these multimedia applications and services efficiently over emerging and diverse wireless networks. To meet this challenge, engineers need to have a deep understanding of wireless and multimedia technologies.

The MSc Multimedia Telecommunications programme aims to provide you with an understanding of the technical characteristics of wireless systems and artificial intelligence technologies. It will cover advanced topics in wireless communications and multimedia. This programme will also cover technologies to understand multimedia data using state-of-the-art AI technologies, such as deep learning.



SCAN THE QR CODE
TO VISIT THE
PROGRAMME
WEBSITE

PROGRAMME DIRECTOR
jimmin.xiao@xjtlu.edu.cn

GENERAL ENQUIRIES
pgenquiries@xjtlu.edu.cn

APPLY
www.xjtlu.edu.cn/en/find-a-programme/
masters/msc-multimedia-telecommunications

You will benefit from:

- a degree from a globally respected university
- excellent research facilities with advanced experimental equipment
- knowledge of cutting-edge technologies needed in the job market
- abundant opportunities to get involved in various national or industry-funded projects.

CORE MODULES

ADVANCED SIGNAL PROCESSING
IMAGE AND VIDEO PROCESSING
DEEP LEARNING FOR COMPUTER VISION
DATA COMMUNICATION AND COMMUNICATION NETWORKS
MOBILE COMMUNICATIONS
MULTIMEDIA COMMUNICATIONS
CODING AND CRYPTOGRAPHY
PROJECT MANAGEMENT
DISSERTATION

ADDITIONAL LEARNING ACTIVITIES

The completion of additional learning activities is required to obtain your masters degree. Normally, required ALA hours will be distributed evenly across each semester, amounting to 200 hours per semester. Part-time programmes will normally require 100 to 150 hours per semester.

ACCREDITATION

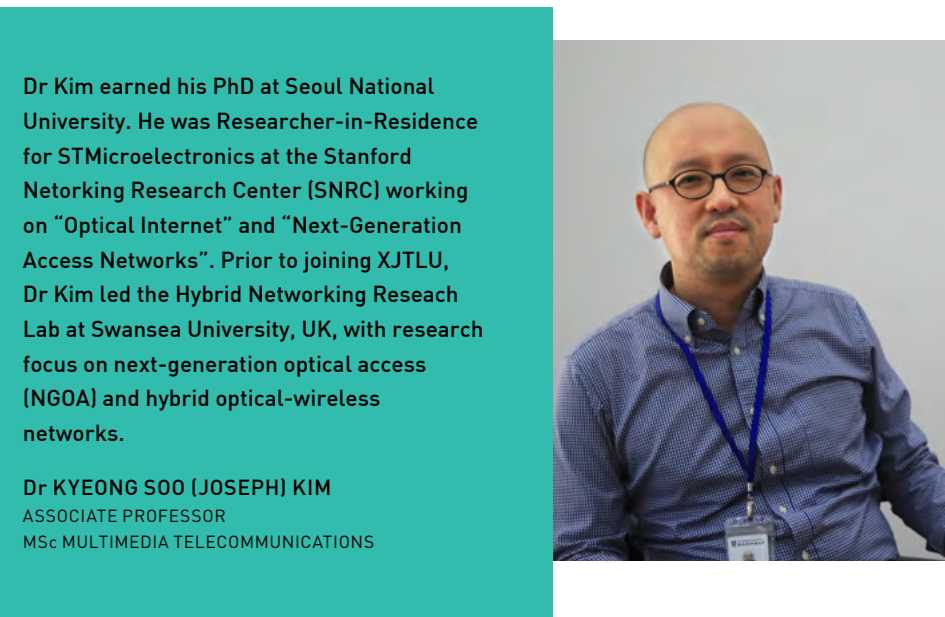
This programme has been accredited by the Institution of Engineering and Technology (IET). IET is a leading professional organisation working to share and advance knowledge and promote science, engineering and technology across the world. Students graduating from this accredited programme can enjoy a more straightforward registration process for incorporated engineer (IEng) or chartered engineer (CEng) registration, important benchmarks professionally.



CAREERS

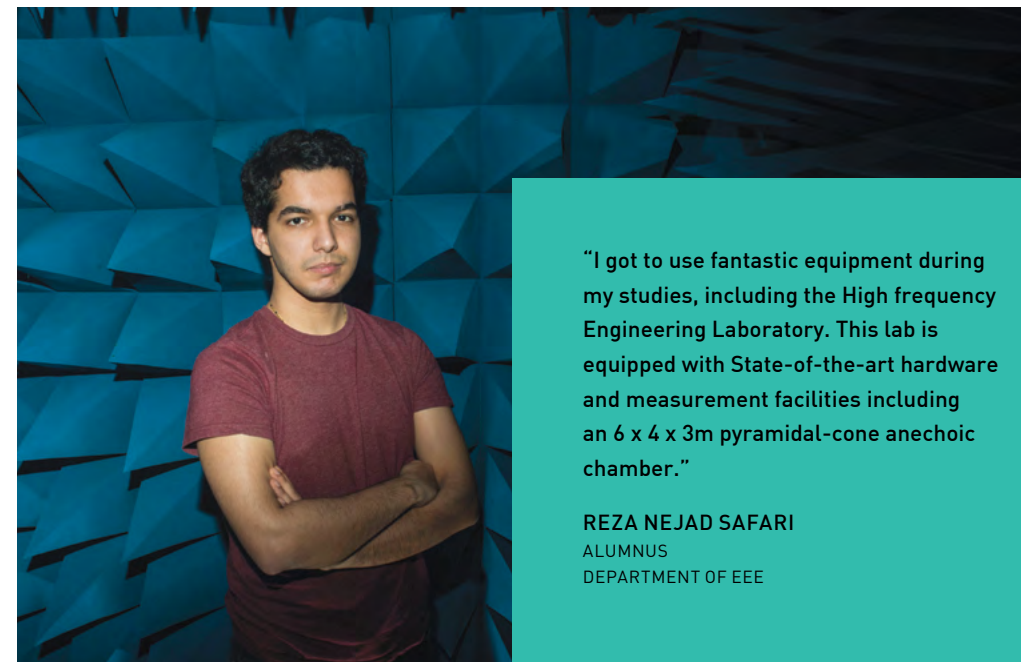
Graduates of this programme will have skills that are in demand in a job market with abundant research and application opportunities. You will have the necessary skills to enter careers in some of the most dynamic fields in image and video communications, artificial intelligence, computer vision.

Graduates will typically be employed as multimedia systems engineers, artificial intelligence developers, multimedia system and information technology consultants, mobile projects managers, wireless and mobile communication consultants, and managers and team leaders in the communications industry.



Dr Kim earned his PhD at Seoul National University. He was Researcher-in-Residence for STMicroelectronics at the Stanford Netorking Research Center (SNRC) working on "Optical Internet" and "Next-Generation Access Networks". Prior to joining XJTLU, Dr Kim led the Hybrid Networking Reseach Lab at Swansea University, UK, with research focus on next-generation optical access (NGOA) and hybrid optical-wireless networks.

Dr KYEONG SOO (JOSEPH) KIM
ASSOCIATE PROFESSOR
MSc MULTIMEDIA TELECOMMUNICATIONS



"I got to use fantastic equipment during my studies, including the High frequency Engineering Laboratory. This lab is equipped with State-of-the-art hardware and measurement facilities including an 6 x 4 x 3m pyramidal-cone anechoic chamber."

REZA NEJAD SAFARI
ALUMNUS
DEPARTMENT OF EEE

XJTLU

MASTERS

DEPARTMENT OF ELECTRICAL AND ELECTRONIC ENGINEERING 电气与电子工程系

The Department of Electrical and Electronic Engineering is committed to research and teaching excellence. Our highly qualified academic staff includes full professors, associate professors and lecturers. We aim to develop graduates who are competent in the fundamentals of electrical and electronic engineering with wider transferable skills in communication, team-working, organisational awareness and project management. Our students are able to meet the needs of a wide spectrum of employers both within and outside the specialised sector. Our strong research background has a positive impact on the quality of teaching - our students are exposed to the latest cutting-edge knowledge.

电气与电子工程系致力于追求卓越学术研究及教学水平。我系具备高质量学术人才, 由教授、副教授和讲师组成。我系以培养在电气与电子工程系方面拥有足够竞争力, 在沟通、团队合作、组织意识和项目管理方面拥有广泛通用技能的毕业生为目标。不论是专业知识或非专业领域能力, 我系学生都能满足雇主的广泛需求。

XI'AN JIAOTONG-LIVERPOOL UNIVERSITY 西交利物浦大学

Xi'an Jiaotong-Liverpool University is the largest international joint venture university in China, combining the best of East and West, awarding English-taught University of Liverpool degrees.